

## 如何更改 Maxum II 的 AO 量程设定

How to modify AO span setting of Maxum II

Single FAQ

Edition 1.1 (2007 年-2 月)



**摘要** 本文介绍了如何更改 AO 量程设定

**关键词** 量程设定

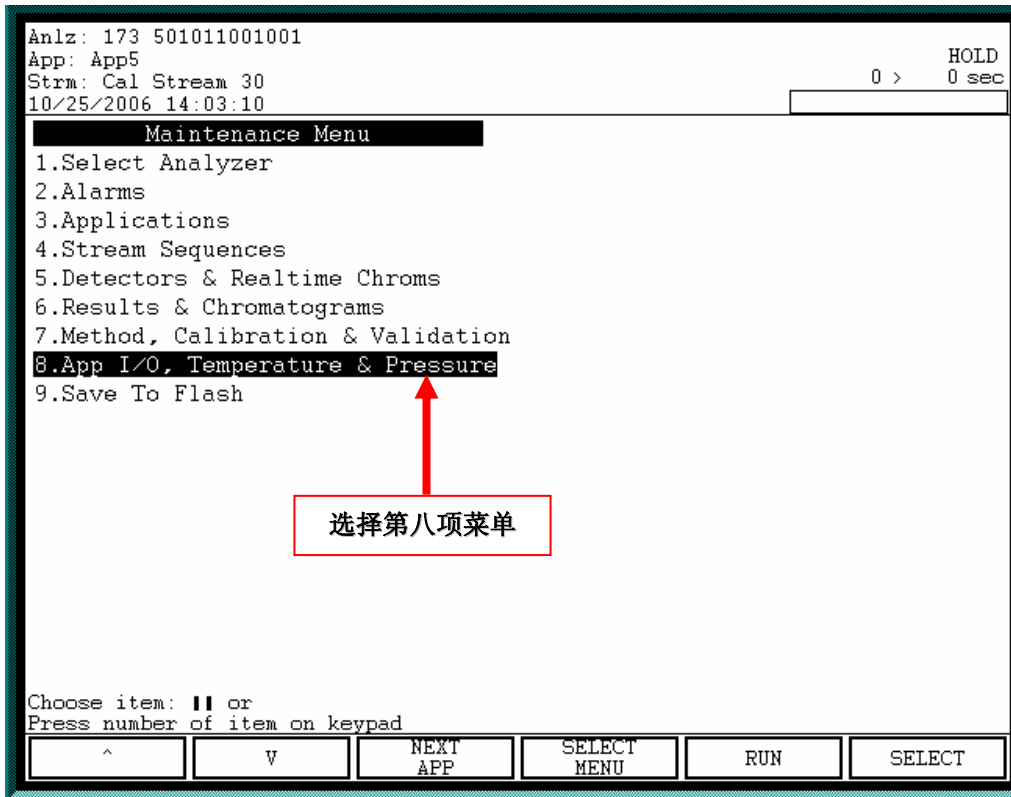
**Key Words** Span setting

目 录

1. 通过使用MMI更改AO量程设定 .....	4
2. 通过使用System Manager（系统经理）更改AO量程设定.....	10

## 1. 通过使用 MMI 更改 AO 量程设定

操作流程如下：



Anlz: 173 501011001001  
App: App5  
Strm: Cal Stream 30  
10/25/2006 14:03:14

HOLD  
0 > 0 sec

App I/O, Temperature & Pressure

选择第二项—  
模拟输出

1. Analog Input  
2. Analog Output  
3. Digital Input  
4. Digital Output  
5. Temperature Controller  
6. Pressure Controller

Choose item: **||**, ENTER; or:  
Press number of item on keypad

^

V

SELECT

Anlz: 173 501011001001  
App: App1  
Strm: Cal Stream 30  
10/25/2006 14:04:15

HOLD  
0 > 0 sec

I/O: Analog Output

#	Name	Value	Stat
300	Isothermal_Oven_1 SetPt	0. 癆	INIT
301	Isothermal_Oven_1 RampRt	0. 癆/min	INIT
302	Isothermal_Oven_1 MaxDev	0. 癆	INIT
303	Isothermal_Oven_1 RCalibGain	0.	INIT
304	Isothermal_Oven_1 MaxT	0. 癆	INIT
400	CA_L1 SetPt	0. psig	INIT
401	CA_L1 MaxDev	0. psig	INIT
402	CA_L1 Max	0. psig	INIT
1001	methane	0. %	OK

选择需要更改  
的组分

Choose item: **||** and select action:

^

V

DISABLE

DETAILS

MODIFY

Anlz: 173 501011001001  
App: Appl  
Strm: Cal Stream 30  
10/25/2006 14:04:15  
I/O: Analog Output

HOLD  
0 > 0 sec

#	Name	Value	Stat
300	Isothermal_Oven_1 SetPt	0. 癩	INIT
301	Isothermal_Oven_1 RampRt	0. 癩/min	INIT
302	Isothermal_Oven_1 MaxDev	0. 癩	INIT
303	Isothermal_Oven_1 RCalibGain	0.	INIT
304	Isothermal_Oven_1 MaxT	0. 癩	INIT
400	CA_I1 SetPt	0. psig	INIT
401	CA_I1 MaxDev	0. psig	INIT
402	CA_I1 Max	0. psig	INIT
1001	methane	0. %	OK

按DETAILS进入  
详细设定画面

Choose item: **||** and select action:

Anlz: 173 501011001001  
App: Appl  
Strm: Cal Stream 30  
10/25/2006 14:04:23

HOLD  
0 > 0 sec

Name	Value
ID	1001
Name	methane
Enable	Yes
Man Setpt	0. %
Cur Setpt	0. %
Status	OK (0)
Zero	0. %
Fullscale	20. %
Datatype	1 0-20 ma
Hardware IO	CAN-0 AO-1 0:0.0.2.1
Alarm Limit	0-0
Units	%

将光标移动到  
Fullscale

Choose item: **||** and select action:

Anlz: 173 501011001001  
App: Appl  
Strm: Cal Stream 30  
10/25/2006 14:04:50

HOLD  
0 > 0 sec

Name	Value
ID	1001
Name	methane
Enable	Yes
Man Setpt	0. %
Cur Setpt	0. %
Status	OK (0)
Zero	0. %
Fullscale	20. %
Datatype	2 4-20 ma
Hardware IO	CAN-0 AO-1 0:0.0.2.1
Alarm Limit	0-0
Units	%

按MODIFY, 进入更改设定画面

Choose item: **||** and select action:

MODIFY

Anlz: 173 501011001001  
App: Appl  
Strm: Cal Stream 30  
10/25/2006 14:04:55

HOLD  
0 > 0 sec

Fullscale **50** %

输入需要的数值, 然后按DONE完成

NEXT ITEM: Accept changes & Edit next list item  
BACK: Abort changes  
DONE: Accept changes

<
>
BACK SPACE
NEXT ITEM
DONE

Anlz: 173 501011001001  
App: Appl  
Strm: Cal Stream 30  
10/25/2006 14:04:57

HOLD  
0 > 0 sec

更改完成

Name	Value
ID	1001
Name	methane
Enable	Yes
Man Setpt	0. %
Cur Setpt	0. %
Status	OK (0)
Zero	0 %
Fullscale	50. %
Datatype	2 4-20 ma
Hardware IO	CAN-0 AO-1 0:0.0.2.1
Alarm Limit	0-0
Units	%

Choose item: **||** and select action:

^

V

Anlz: 173 501011001001  
App: Appl  
Strm: Cal Stream 30  
10/25/2006 14:05:07

HOLD  
0 > 0 sec

Maintenance Menu

- 1.Select Analyzer
- 2.Alarms
- 3.Applications
- 4.Stream Sequences
- 5.Detectors & Realtime Chroms
- 6.Results & Chromatograms
- 7.Method, Calibration & Validation
- 8.App I/O, Temperature & Pressure
- 9.Save To Flash

按HOME键后，按  
两次9保存更改

Choose item: **||** or  
Press number of item on keypad

^

V

NEXT  
APP

SELECT  
MENU

RUN

SELECT



Anlz: 173 501011001001  
App: Appl  
Strm: Cal Stream 30  
10/25/2006 14:05:08

HOLD  
0 > 0 sec

1.Sel Press Save To Flash(9)  
2.Ala to Confirm  
3.App Back to Cancel  
4.Str

5.Detectors & Realtime Chroms  
6.Results & Chromatograms  
7.Method, Calibration & Validation  
8.App I/O, Temperature & Pressure  
9.Save To Flash

第一次按9, 界面显示

Choose item: || or  
Press number of item on keypad

Anlz: 173 501011001001  
App: Appl  
Strm: Cal Stream 30  
10/25/2006 14:05:10

HOLD  
0 > 0 sec

1.Sel Saving To Flash  
2.Ala Please Wait  
3.App

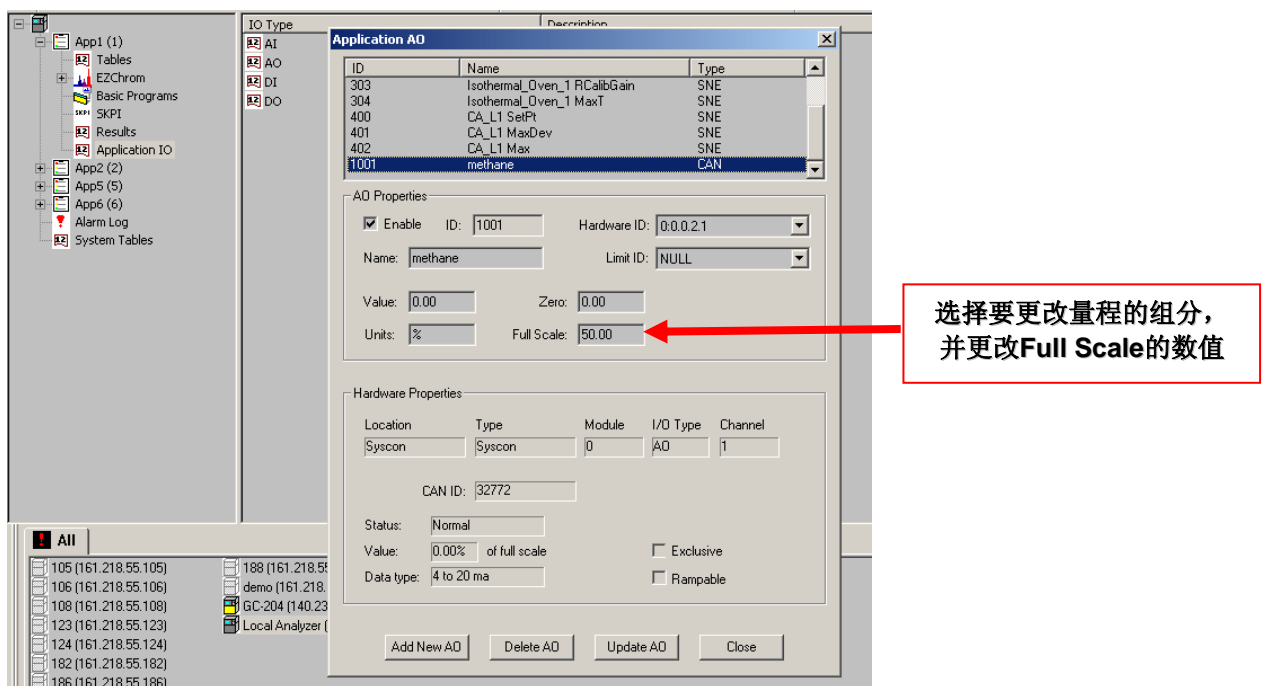
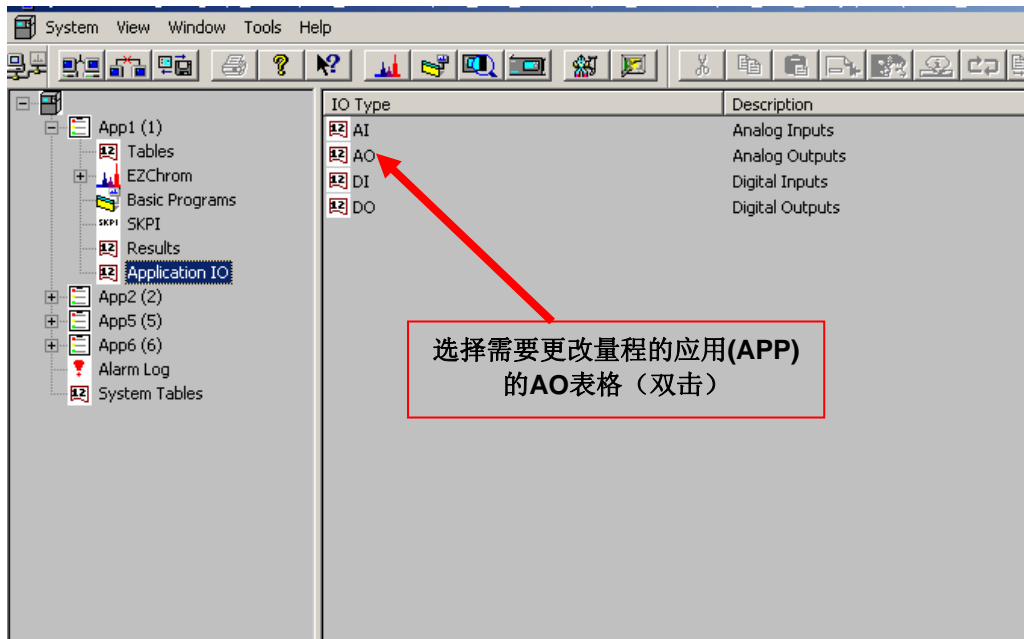
4.Stream Sequences  
5.Detectors & Realtime Chroms  
6.Results & Chromatograms  
7.Method, Calibration & Validation  
8.App I/O, Temperature & Pressure  
9.Save To Flash

第二次按9, 界面显示

Choose item: || or  
Press number of item on keypad

^	v	NEXT APP	SELECT MENU	RUN	SELECT
---	---	-------------	----------------	-----	--------

## 2. 通过使用 System Manager (系统经理) 更改 AO 量程设定



Application AO

ID	Name	Type
303	Isothermal_Oven_1 RCalibGain	SNE
304	Isothermal_Oven_1 MaxT	SNE
400	CA_L1 SetPt	SNE
401	CA_L1 MaxDev	SNE
402	CA_L1 Max	SNE
1001	methane	CAN

AO Properties:

Enable ID: 1001 Hardware ID: 0.0.0.2.1

Name: methane Limit ID: NULL

Value: 0.00 Zero: 0.00

Units: % Full Scale: 30.00

Hardware Properties:

Location	Type	Module	I/O Type	Channel
Syscon	Syscon	0	AO	1

CAN ID: 32772

Status: Normal

Value: 0.00% of full scale  Exclusive

Data type: 4 to 20 ma  Rampable

Add New AO Delete AO Update AO Close

按Update AO 更新量程数值，  
然后按Close关闭窗口，并在  
MMI界面保存设定

## 附录一 推荐网址

西门子（中国）有限公司

自动化与驱动集团 客户服务与支持中心

网站首页: [www.ad.siemens.com.cn/Service](http://www.ad.siemens.com.cn/Service)

专家推荐精品文档: <http://www.ad.siemens.com.cn/Service/recommend.asp>

过程仪表常问问题: <http://support.automation.siemens.com/CN/view/zh/10806926/133000>

分析仪器常问问题: <http://support.automation.siemens.com/CN/view/zh/10806991/133000>

“找答案”过程及分析仪器版区:

<http://www.ad.siemens.com.cn/service/answer/category.asp?cid=1046>

产品信息网页: <http://www.ad.siemens.com.cn/products/pi/>