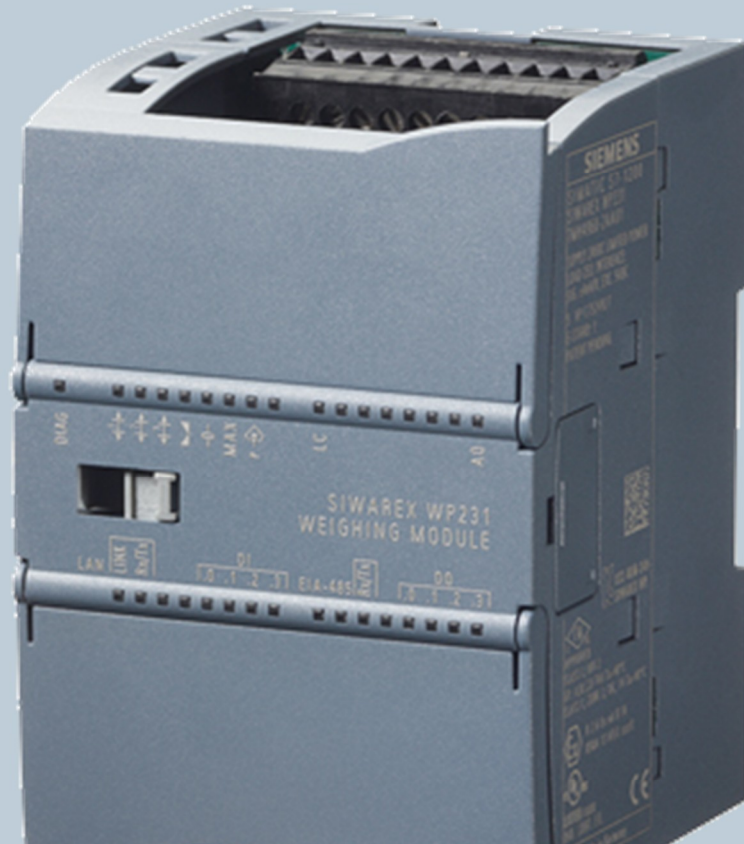


SIEMENS



Weighing technology

FAQs SIWAREX WP2xx

How do I update the firmware of a SIWAREX WP2xx module?

Version 3.0, 24.04.2015

Siemens.com/weighing

How do I update the firmware of a SIWAREX WP231 or SIWAREX WP241 module?

The firmware-update for both modules, SIWAREX WP231 and SIWAREX WP241, works in the same way. You need the software SIWATOOL V7. This software is part of the package 7MH4960-2AK01 and 7MH4960-4AK01.

In addition please download the latest firmware online from the Siemens Industry Online Support. You can select the respective SIWAREX module and entry type "Download".

<http://support.automation.siemens.com/WW/view/en/36541530/133100>

The please follow the next steps:

1. If your WP2xx is connected to a SIMATIC S7-1200 CPU, set the CPU into "STOP".
2. Connect your PC with SIWATOOL V7 and the WP231 module with an Ethernet cable and click on the "ONLINE" button.



3. Click on "Communication" → "Receive all data" in order to create a full backup of your module.
4. Create a backup file and save it on your hard disc / storage device via "File" → "Save as..."

5. Click on the button "File for download"



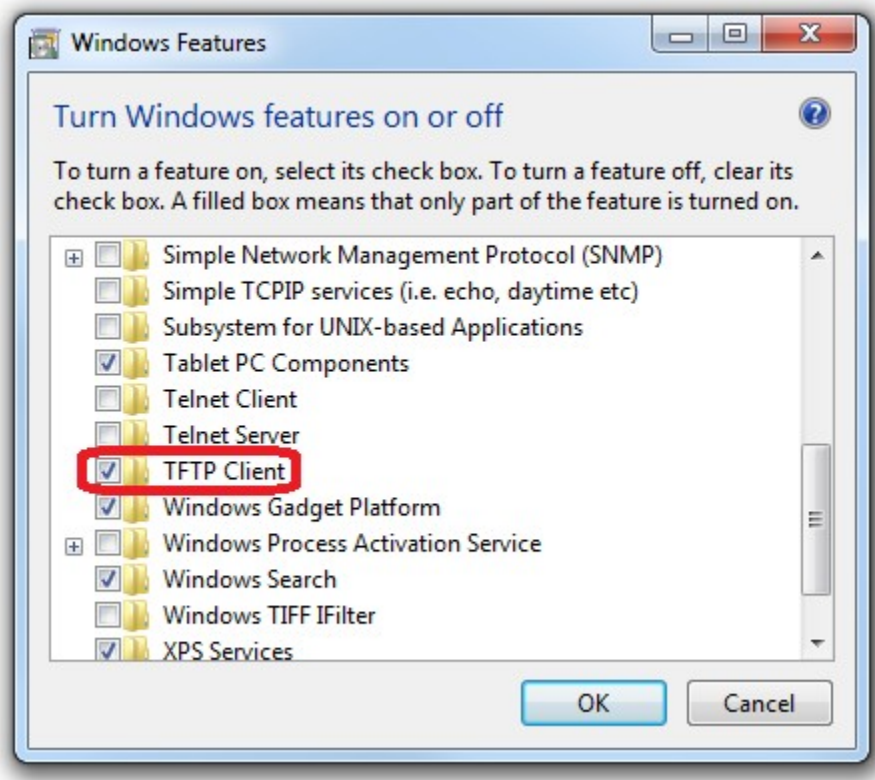
6. Select the downloaded firmware file and click on "Start transfer".
7. After downloading the file, you have to reboot the WP2xx by switching off-on the 24V supply voltage.
8. If the module stays in "Error" state with the message "Checksum error data" after reboot you have to download your backup-file from point 4 via "Communication" → "Send all data" (Service Mode needs to be switched on!).
Alternatively you can use the command "Standard Parameter set (12)" in order to start up the WP2xx module again.

NOTE:

The Ethernet/RS485 settings of a WP2xx module don't change by updating the firmware. As well after executing "Standard Parameter set (12)" these settings won't change. Only "Load factory settings (11)" will reset all settings of the module to factory default including all Ethernet / RS485 settings.

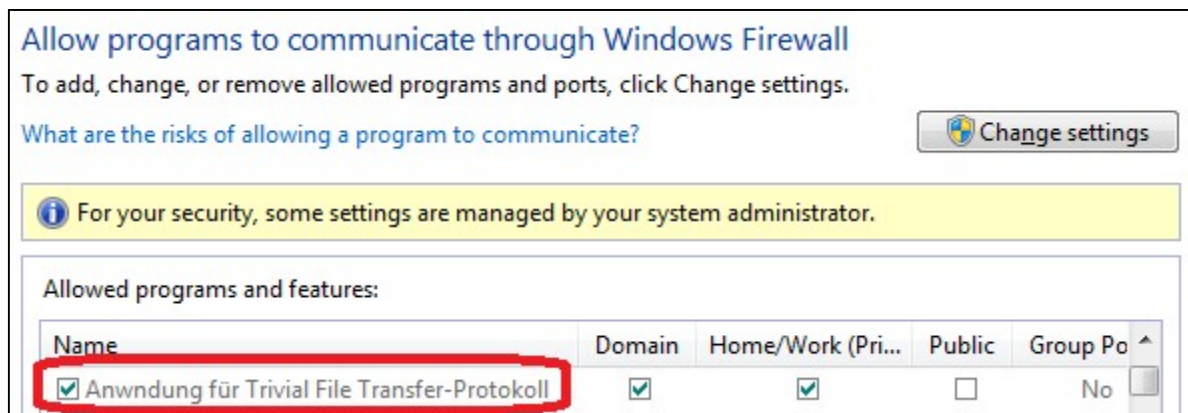
If the firmware download is canceled with "Download Error", please check the following Windows 7 settings:

- 1.) Start → Control Panel → Programs and Features → Turn Windows features on or off



The TFTP Client must be activated

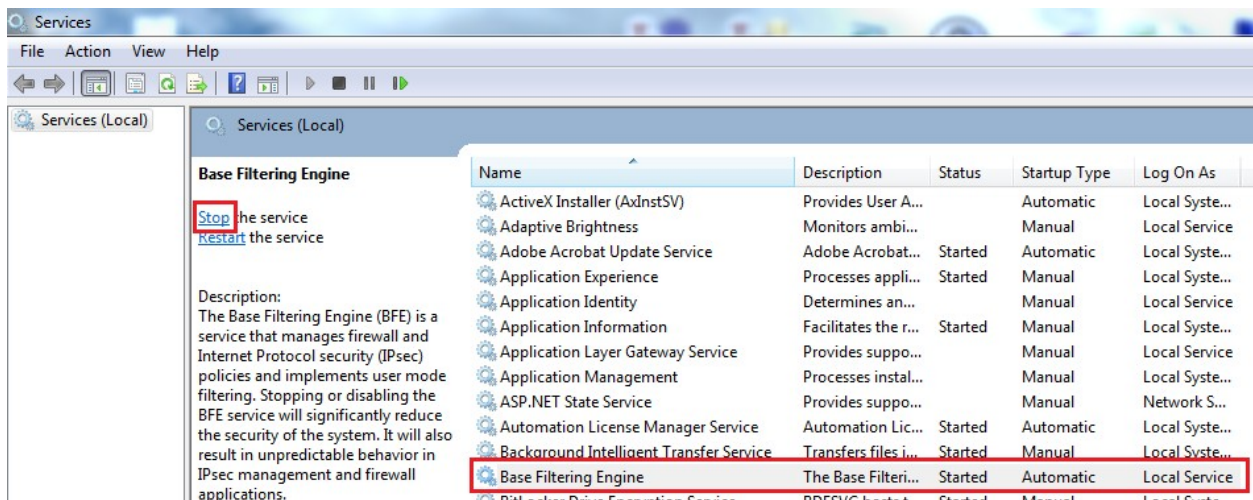
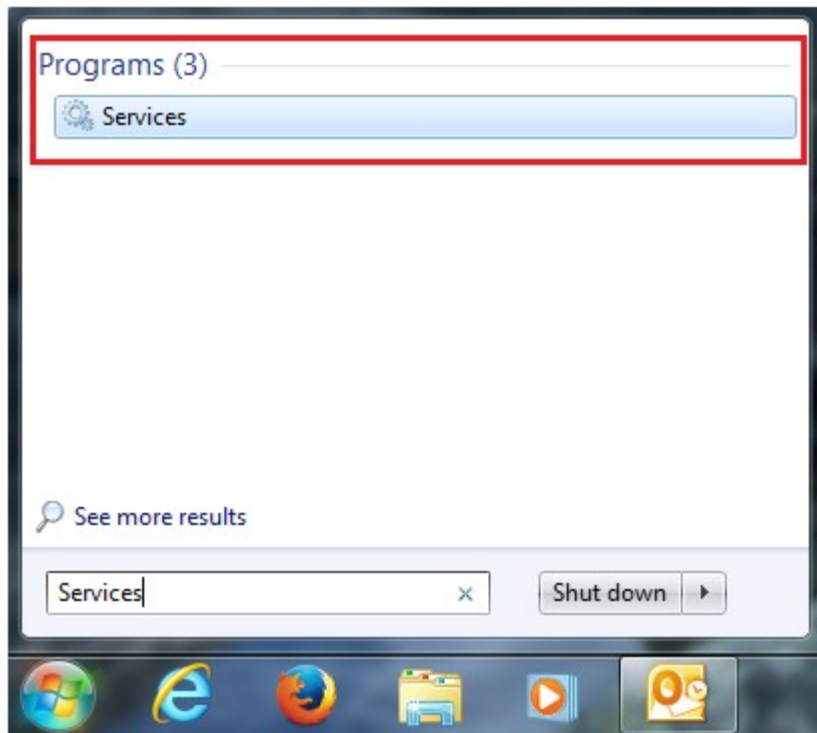
- 2.) Start → Control Panel → Windows Firewall → Allow a program or feature through Windows Firewall



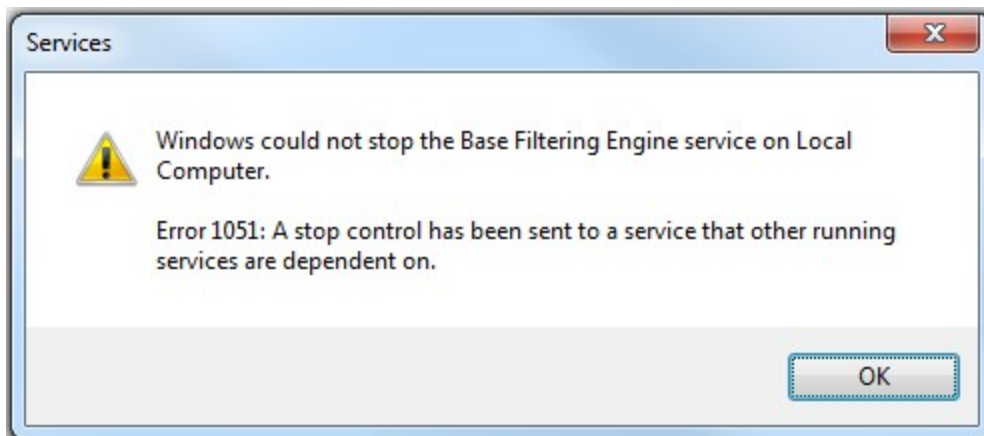
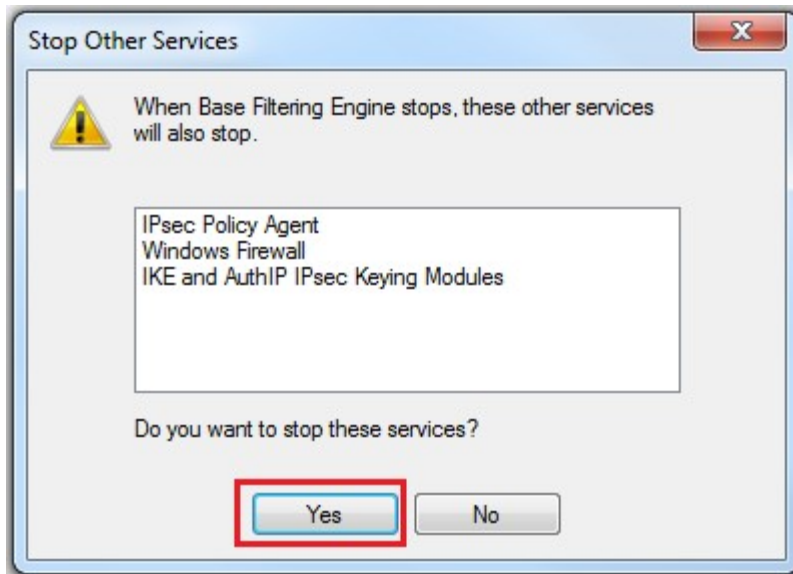
The Trivial File Transfer-Protocol must be able to communicate through the firewall.
(For adding it can be found in "C:\Windows\System32\TFTP.exe")

3.) Windows7 “Base Filtering Engine”:

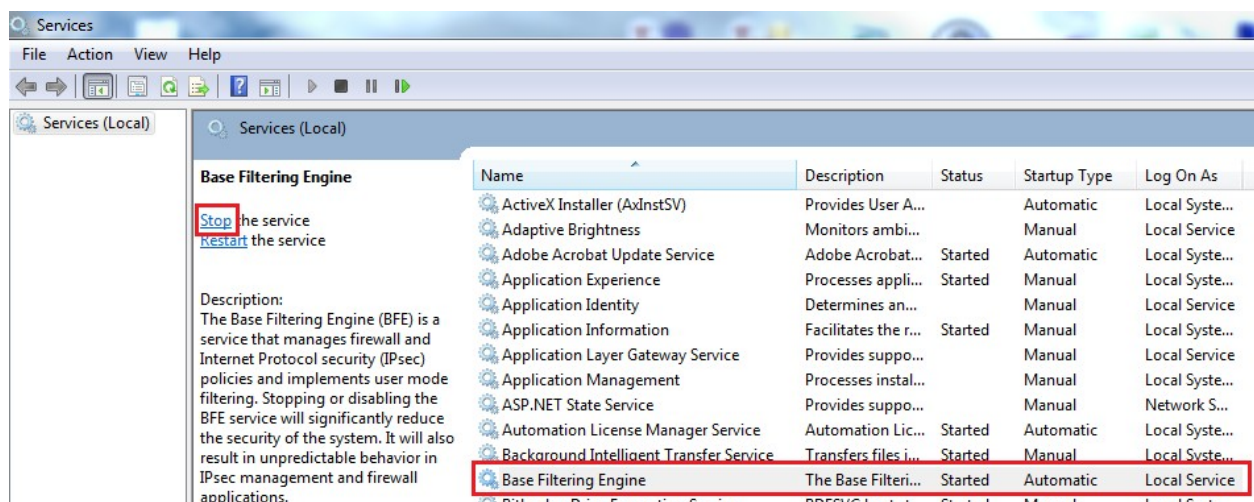
Therefore please enter “Services” into the Windows search box and click on it:



Please select the entry “Base Filtering Engine” and click on the left side on “Stop the service”.

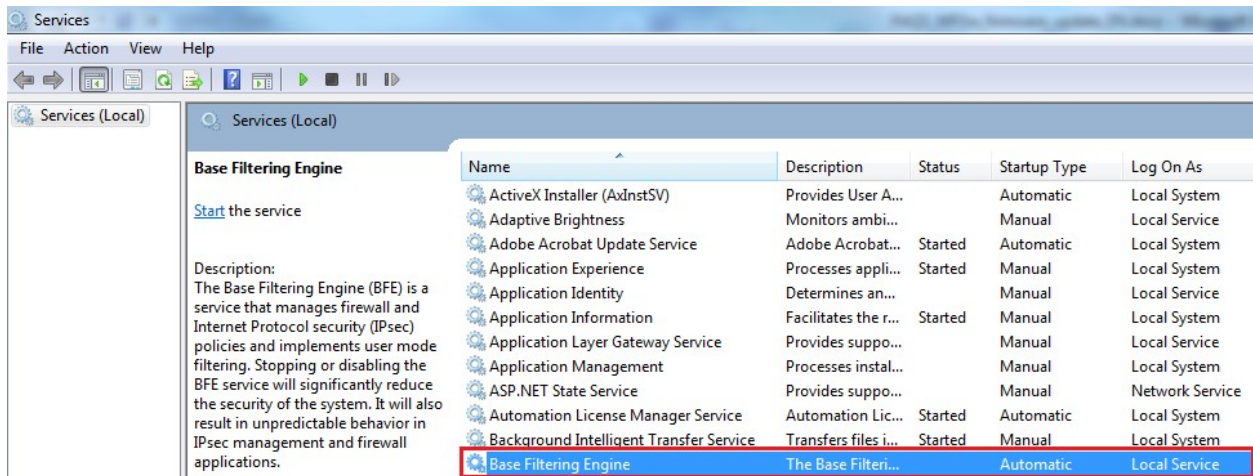


If this error message appears, the “Base Filtering Engine” must be stopped by “Stop the service” a second time!





After that, the “Base Filtering Engine” should not be marked as “Started” any longer::



The firmware upload to the WP2xx module can be performed now.

Please reboot your PC after the upload, so that the Base Filtering Engine will be activated automatically.