

SIEMENS



FAQ • 07/2015

PCS 7 V8.1 - Utilizing a Chip Card Reader in a Virtual Environment

SIMATIC PCS 7 V8.1

<https://support.industry.siemens.com/cs/ww/en/view/109478004>

This entry originates from the Siemens Industry Online Support. The conditions of use specified there apply (www.siemens.com/nutzungsbedingungen).

Security Notes

Siemens offers products and solutions with industrial security functions which support the secure operation of plants, solutions, machines, devices and/or networks. They are important components in a comprehensive industrial security concept. The Siemens products and solutions continue to be developed under this aspect. Siemens recommends that you keep yourself regularly informed about product updates.

For the safe operation of Siemens products and solutions it is necessary to take appropriate security measures (cell protection concept, for example) and to integrate each component in an overall industrial security concept which is state of the art. This should also cover the third-party products used. Additional information about industrial security is available at:

<http://www.siemens.com/industrialsecurity>.

In order to keep yourself informed about product updates, we recommend subscribing to our product-specific newsletter. Additional information about this is available at <http://support.industry.siemens.com>.

Contents

1	General Information.....	3
2	Installation / Commissioning.....	4
2.1	Install Chip Card Reader Driver	5
2.2	Install SIMATC Logon V1.5.3.....	5
2.3	Configure SIMATIC Logon	8
2.3.1	Settings on the Logon Computer for SIMATIC Logon	8
2.3.2	Settings on the OS Client for SIMATIC Logon	9
2.3.3	Setting up the groups in the User Administrator	12
2.4	Logon with Chip Card in OS Runtime	13

1 General Information

In PCS 7 in combination with SIMATIC Logon you can realize login via a chip card. In a virtual operating environment the chip card reader is connected to a USB port of the Thin Client.

This document describes how to incorporate the chip card reader into the virtual operating environment.

At the next link below you have a description of how to operate PCS 7 V8.1 in virtual operating environments.

OS Client, Batch Client, Route Control Client and Process Historian Released for Virtual Operating Environments with SIMATIC PCS 7 V8.1:

<https://support.industry.siemens.com/cs/ww/en/view/93997453>

The link below provides a description of how to realize login via chip card in PCS 7 with SIMATIC Logon.

<https://support.industry.siemens.com/cs/ww/en/view/22014042>

Validity

The document was created with PCS 7 V8.1, but can also be used for newer PCS 7 versions

2 Installation / Commissioning

Requirements

- PCS 7 V8.1 or higher
- SIMATIC Logon V1.5.3
"Service Pack 3 for SIMATIC Logon V1.5 procurable by Download"
<http://support.automation.siemens.com/WW/view/en/107599703>
- The chip card reader is connected to a USB port of the Thin Client
- Access to the virtualized OS Client with installed SIMATIC Logon via RDP

WARNING	With access to a virtualized OS Client the existing session of the OS Client must be used, for example with the <code>mstsc /admin</code> command. In this way only one RDP session can be active and only one user logged on. The logged on Windows user on the OS Client must have automatic logon in Windows. SIMATIC Logon does not support multiple, parallel RDP connections.
----------------	--

Note	If the user connects to a SIMATIC Logon computer by RDP, a card reader, which from the user's point of view is local and which is connected via RDP, can be utilized as logon device. This setting is configured in the "Logon Device" tab in the SIMATIC Logon Configuration dialog. SIMATIC Logon always reads the card of the currently active User Session.
-------------	---

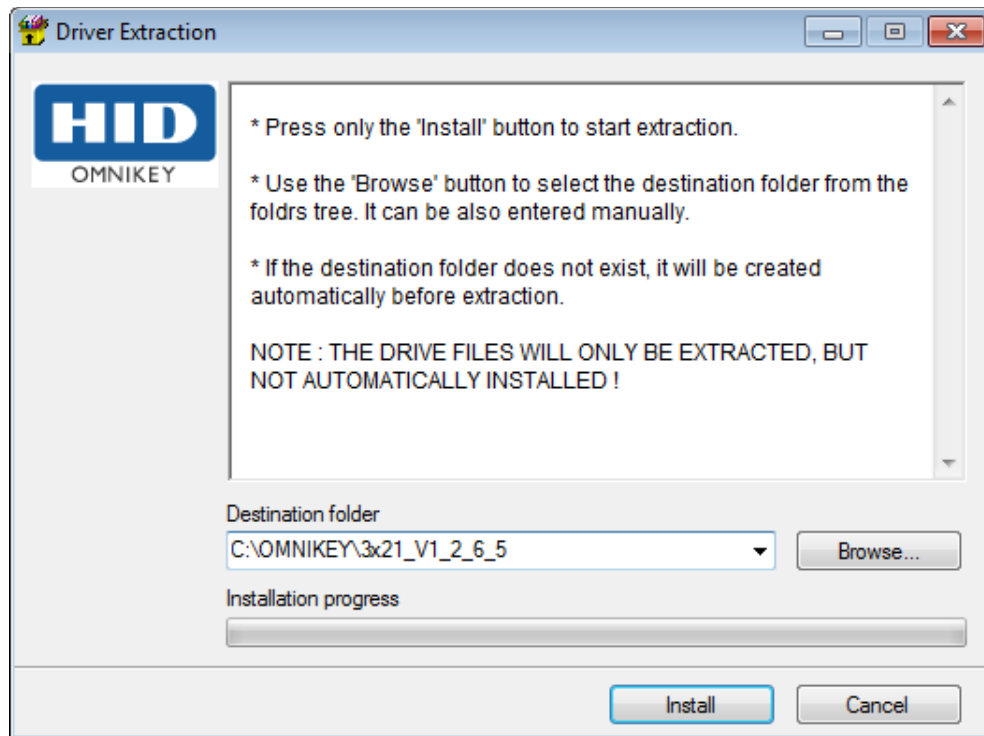
2.1 Install Chip Card Reader Driver

If not already done, install the latest driver of the chip card reader on the Thin Client. This is on the Support DVD of PCS 7.

Example for PCS 7 V8.1:

"DVD_PCS7.V81\Software_Support_Package\DVD_PCS7_Software_Support_and_Tools_2014_02_S79220B5799E\01_Drivers\CHIPCARD\CardMan 3121 USB"

Figure 2-1 Installation of the chip card driver



2.2 Install SIMATIC Logon V1.5.3

In the second step SIMATIC Logon V1.5.3 is installed on the virtualized OS Client.

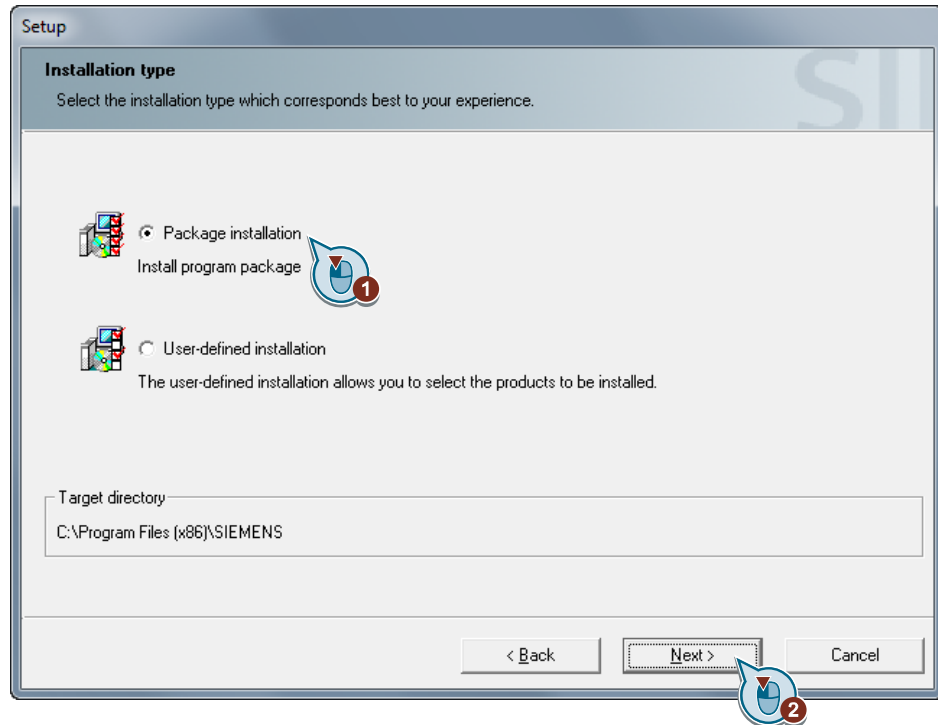
Note You can skip this step if SIMATIC Logon V1.5.3 is already installed. SIMATIC Logon V1.5.3 is a component of PCS 7 from version V8.1 SP1 onwards.

1. Open the PCS 7 Setup via "DVD_PCS7.V81 > DVD_1 > Setup".

2 Installation / Commissioning

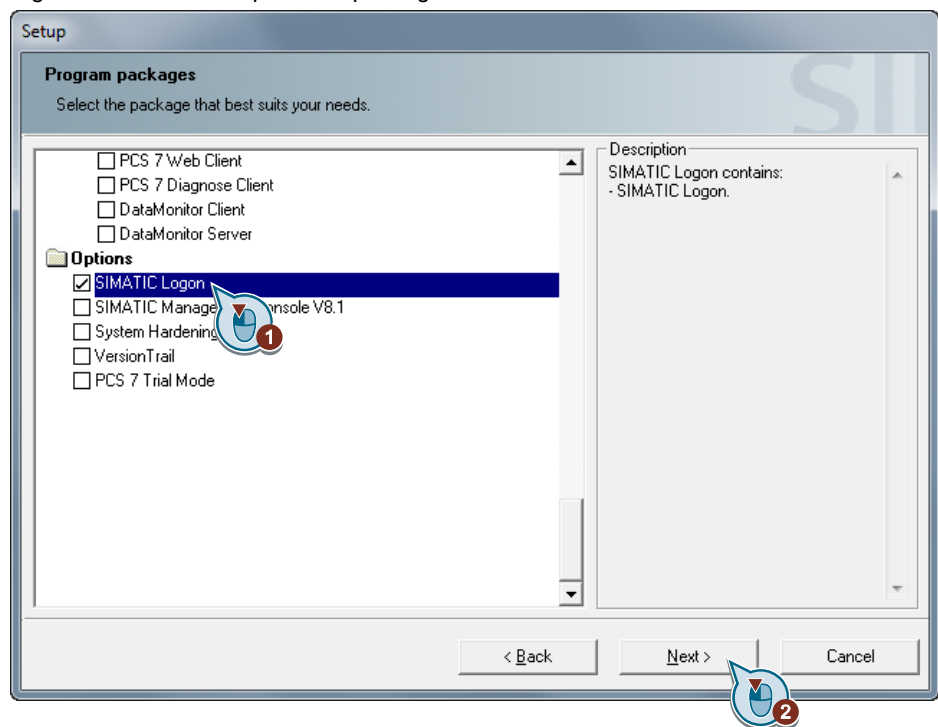
2. Select "Package installation" as the type of installation and click the "Next >" button.

Figure 2-2 PCS 7 Setup: Select installation type



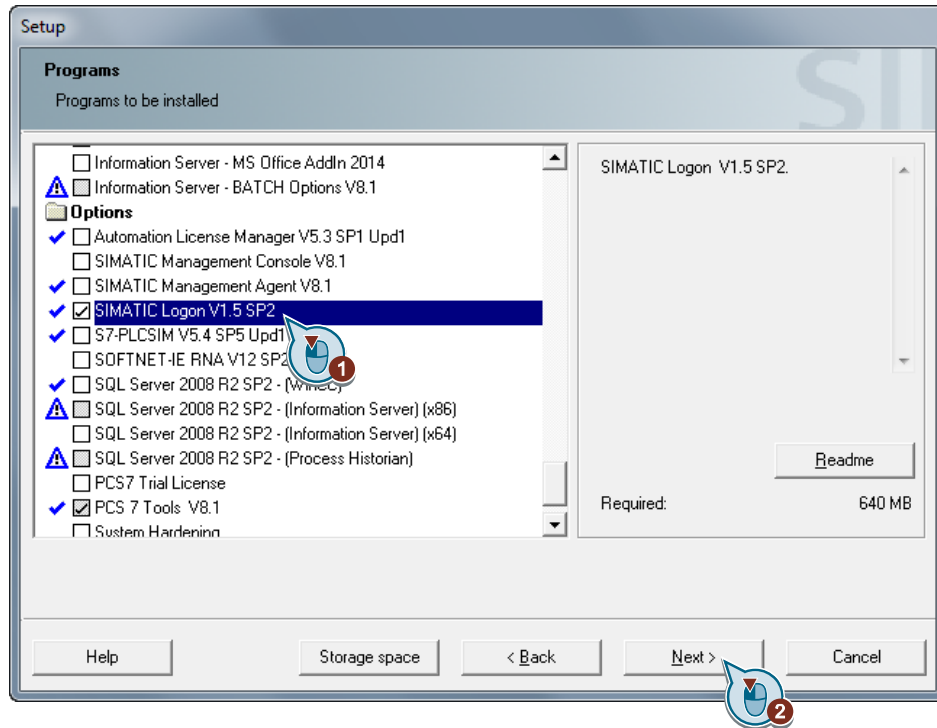
3. Under "Options" you mark the "SIMATIC Logon" package and click the "Next >" button.

Figure 2-3 PCS 7 Setup: Select package



- Under "Options" you mark the "SIMATIC Logon V1.5 SP2" program and click the "Next >" button.

Figure 2-4 PCS 7 Setup: Select program



- Run the installation and close the PCS 7 Setup.
- Install the Service Pack 3 for SIMATIC Logon V1.5, which is available in the following entry:
<http://support.automation.siemens.com/WW/view/en/107599703>

2.3 Configure SIMATIC Logon

SIMATIC Logon is then configured as in a real environment.

In this example the OS Server "ETOS01A" is used as logon computer and "BSUser" as user.

Note The configuration of a logon computer with SIMATIC Logon is usually used in a workgroup.

Further Information

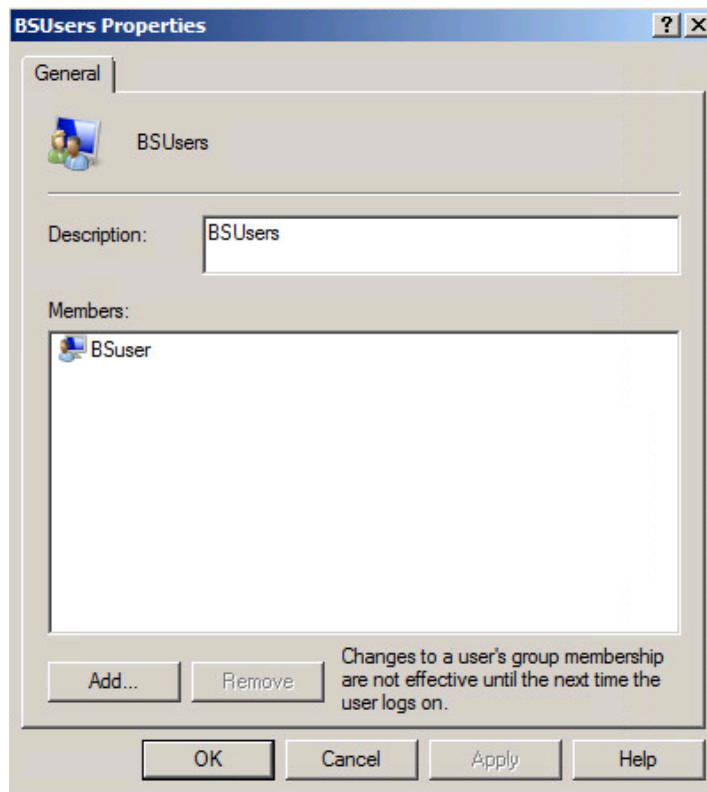
How do you realize logon via chip card in PCS 7 with SIMATIC Logon?

<https://support.industry.siemens.com/cs/ww/en/view/22014042>

2.3.1 Settings on the Logon Computer for SIMATIC Logon

Note If the logon computer is an OS Server or an ES, access must not be via RDP. If you have a virtualized OS Server or virtualized ES, use VNC, the vSphere Client or vSphere Web Client.

Figure 2-5 BSUsers group on the ETOS01A logon computer for SIMATIC Logon



2.3.2 Settings on the OS Client for SIMATIC Logon

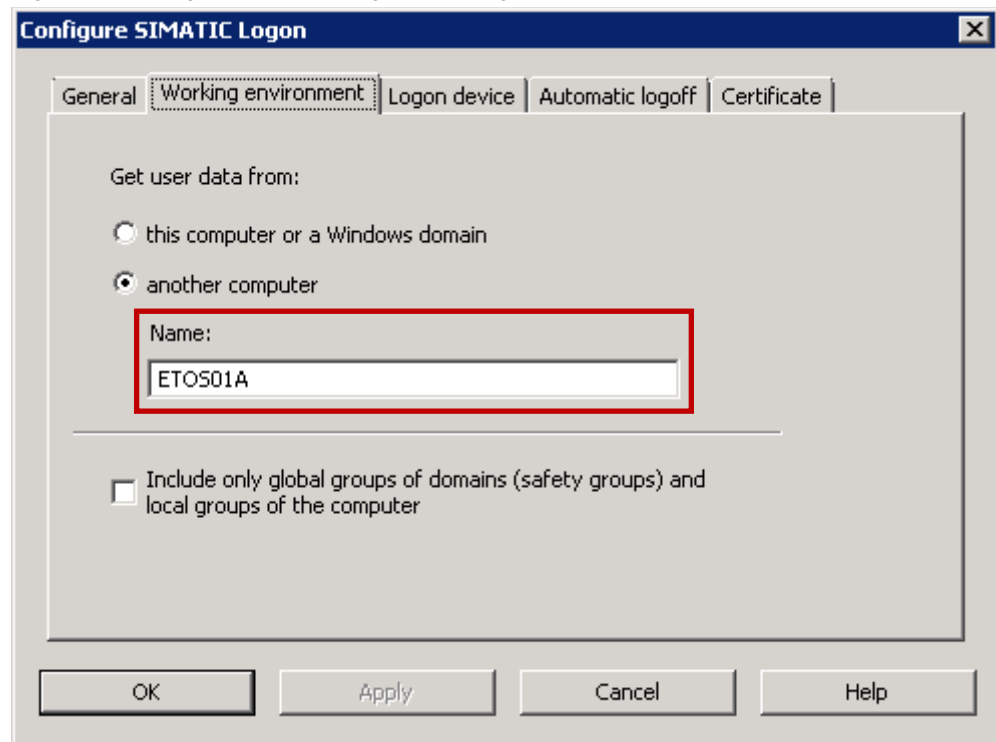
1. **Establish connection with OS Client**

Connect with the virtualized OS Client via RDP using the **mstsc /admin** command, for example.

2. **Select the working environment**

Select "Start > All Programs > Siemens Automation > SIMATIC > SIMATIC Logon > Configure SIMATIC Logon".

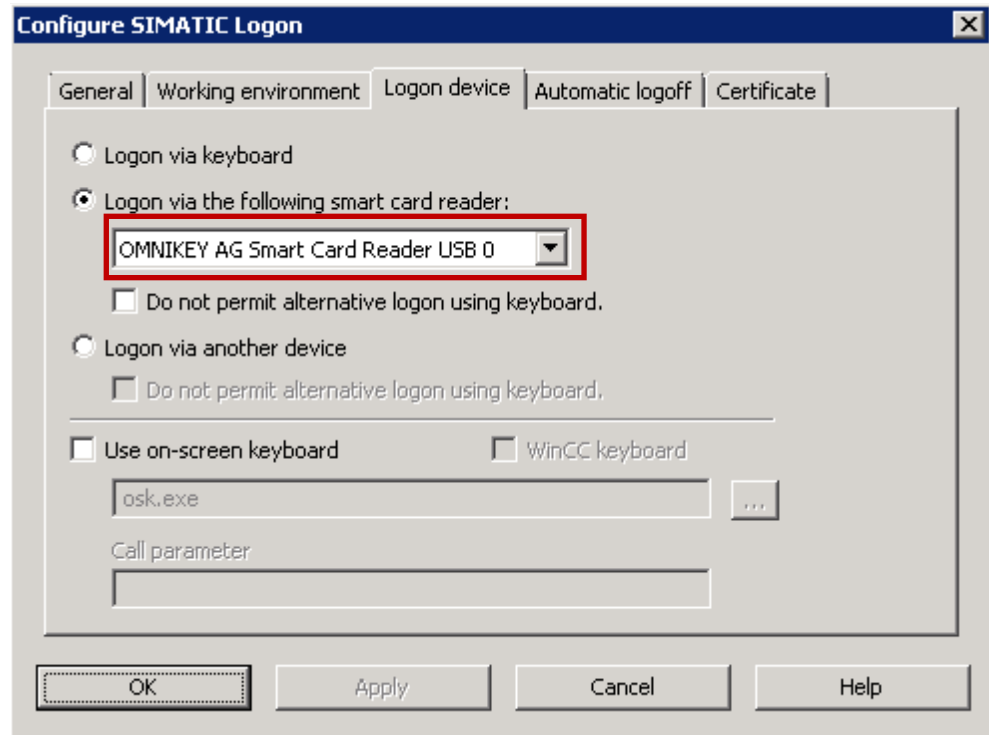
Figure 2-6 Configure SIMATIC Logon: Working environment



3. Select the logon device

Select the chip card reader connected to the Thin Client via USB.

Figure 2-7 Configure SIMATIC Logon: Logon device



4. Select the chip card

Select "Start > All Programs > Siemens Automation > SIMATIC > SIMATIC Logon > Edit Smart Card".

Figure 2-8 SIMATIC Logon Service

SIMATIC Logon Service - Edit Smart Card

Log on to: ETOS01A

User name:

Password:

Confirm new password:

Change password Write data to smart card

Log on to: ETOS01A

User name: BSUser

Read data from smart card

Exit Help

2.3.3 Setting up the groups in the User Administrator

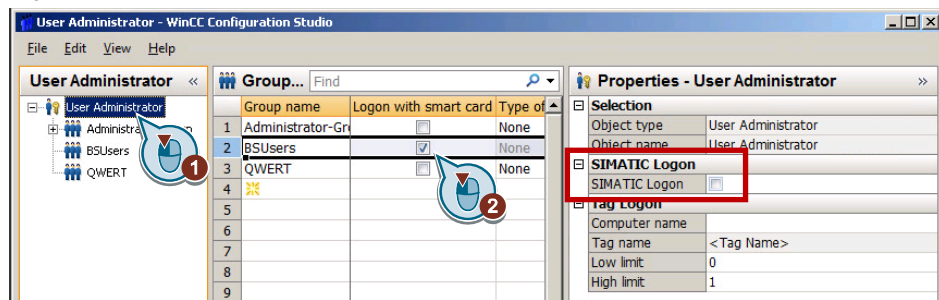
1. Configure the "BSUsers" group in the "User Administrator".

Note

The group in the User Administrator must have the same name as the Windows group on the logon computer of SIMATIC Logon; in this example it is "BSUsers".

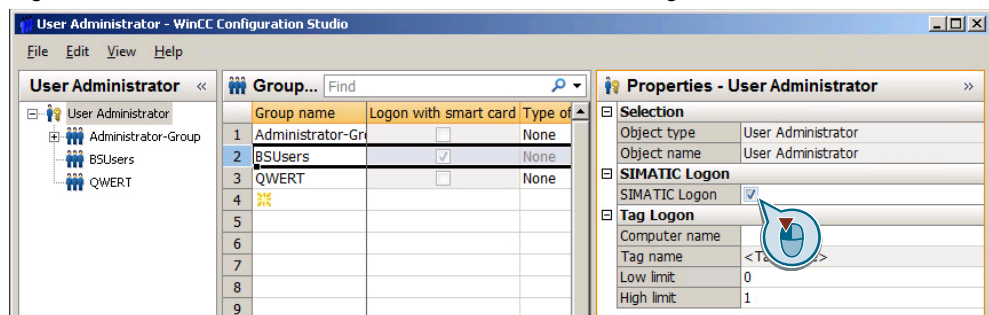
2. Mark "User Administrator" and enable the "Logon with smart card" option for "BSUsers". The "SIMATIC Logon" option must be disabled here.

Figure 2-9 User Administrator on the OS Client



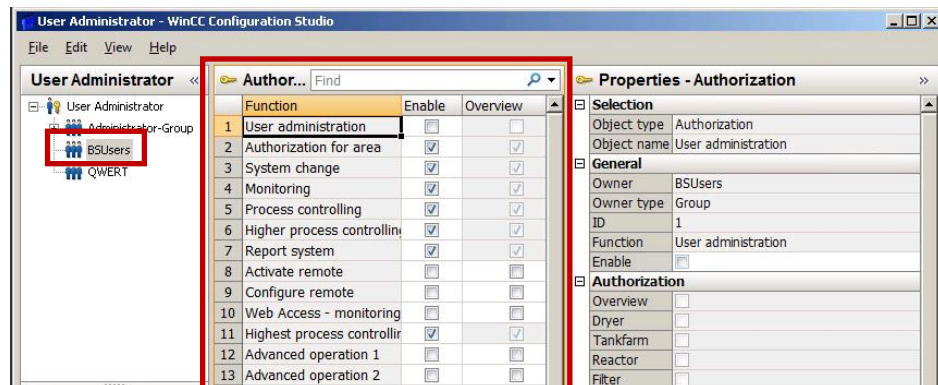
3. Enable the "SIMATIC Logon" option.

Figure 2-10 User Administrator on the OS Client: SIMATIC Logon



4. Configure the required authorizations for the "BSUsers" group.

Figure 2-11 User Administrator on the OS Client: Authorizations



2.4 Logon with Chip Card in OS Runtime

Requirements

- The chip card reader is connected via USB to the Thin Client.
- The chip card driver is installed on the Thin Client.
- SIMATC Logon has been configured.
- For this example the "BSUsers" group and the "BSUser" user have been configured on the logon computer for SIMATIC Logon.
- For this example the "BSUsers" has been configured in the "User Administrator" for SIMATIC Logon and chip card.
- Runtime is enabled on the OS Client.

Procedure

Connect with the virtualized OS client via RDP from the Thin Client using the **mstsc /admin** command, for example.

The next dialog shows the Runtime screen of the virtualized OS Client with the "BSUser" user logged on via the chip card. The "SIMATIC Logon Service" dialog is also shown, which shows the user read out of the chip card.

Figure 2-12 Runtime with user logged on via smart card

