

1 Display unit



Replacement user interface (FDK:085U1038 / FDK:085U1039).



Front of display unit.



Back of display unit.

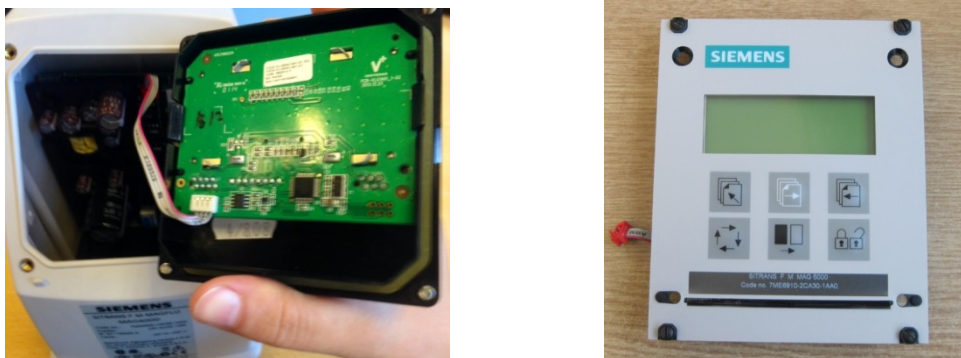
2 Installation in MAG 5000 / MAG 6000 (IP67 and 19" transmitters)

The IP67 and 19" transmitters use the same display unit. Follow the instructions below to replace the display unit.

1. Remove cover and loosen the screws or remove the screws.



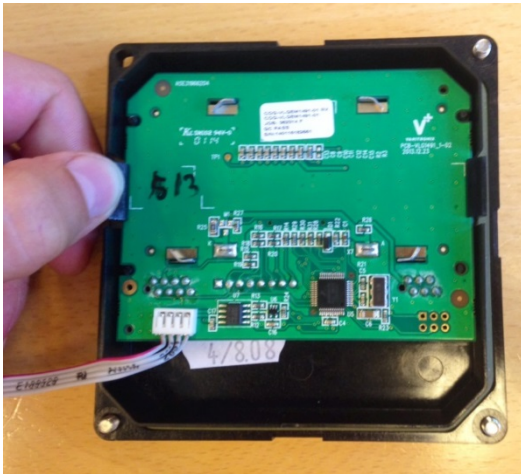
2. Remove user interface.



3. Remove stick connection.



4. Press clips to remove display unit.



5. Remove connection band to user interface.



6. Repeat these steps in reverse order to connect the replacement unit. Ensure that connection band to user interface is connected correctly.