

SIEMENS

Ingenuity for life

Industry Online Support

Home

Externally Editing WinCC (TIA Portal) Graphics

WinCC (TIA Portal) V17 or higher / Export Graphics
Tool / SIMATIC Openness

<https://support.industry.siemens.com/cs/ww/en/view/109562021>

Siemens
Industry
Online
Support



Legal information

Use of application examples

Application examples illustrate the solution of automation tasks through an interaction of several components in the form of text, graphics and/or software modules. The application examples are a free service by Siemens AG and/or a subsidiary of Siemens AG ("Siemens"). They are non-binding and make no claim to completeness or functionality regarding configuration and equipment. The application examples merely offer help with typical tasks; they do not constitute customer-specific solutions. You yourself are responsible for the proper and safe operation of the products in accordance with applicable regulations and must also check the function of the respective application example and customize it for your system.

Siemens grants you the non-exclusive, non-sublicensable and non-transferable right to have the application examples used by technically trained personnel. Any change to the application examples is your responsibility. Sharing the application examples with third parties or copying the application examples or excerpts thereof is permitted only in combination with your own products. The application examples are not required to undergo the customary tests and quality inspections of a chargeable product; they may have functional and performance defects as well as errors. It is your responsibility to use them in such a manner that any malfunctions that may occur do not result in property damage or injury to persons.

Disclaimer of liability

Siemens shall not assume any liability, for any legal reason whatsoever, including, without limitation, liability for the usability, availability, completeness and freedom from defects of the application examples as well as for related information, configuration and performance data and any damage caused thereby. This shall not apply in cases of mandatory liability, for example under the German Product Liability Act, or in cases of intent, gross negligence, or culpable loss of life, bodily injury or damage to health, non-compliance with a guarantee, fraudulent non-disclosure of a defect, or culpable breach of material contractual obligations. Claims for damages arising from a breach of material contractual obligations shall however be limited to the foreseeable damage typical of the type of agreement, unless liability arises from intent or gross negligence or is based on loss of life, bodily injury or damage to health. The foregoing provisions do not imply any change in the burden of proof to your detriment. You shall indemnify Siemens against existing or future claims of third parties in this connection except where Siemens is mandatorily liable.

By using the application examples you acknowledge that Siemens cannot be held liable for any damage beyond the liability provisions described.

Other information

Siemens reserves the right to make changes to the application examples at any time without notice. In case of discrepancies between the suggestions in the application examples and other Siemens publications such as catalogs, the content of the other documentation shall have precedence.

The Siemens terms of use (<https://support.industry.siemens.com>) shall also apply.

Security information

Siemens provides products and solutions with industrial security functions that support the secure operation of plants, systems, machines and networks.

In order to protect plants, systems, machines and networks against cyber threats, it is necessary to implement – and continuously maintain – a holistic, state-of-the-art industrial security concept. Siemens' products and solutions constitute one element of such a concept.

Customers are responsible for preventing unauthorized access to their plants, systems, machines and networks. Such systems, machines and components should only be connected to an enterprise network or the Internet if and to the extent such a connection is necessary and only when appropriate security measures (e.g. firewalls and/or network segmentation) are in place. For additional information on industrial security measures that may be implemented, please visit <https://www.siemens.com/industrialsecurity>.

Siemens' products and solutions undergo continuous development to make them more secure. Siemens strongly recommends that product updates are applied as soon as they are available and that the latest product versions are used. Use of product versions that are no longer supported, and failure to apply the latest updates may increase customer's exposure to cyber threats.

To stay informed about product updates, subscribe to the Siemens Industrial Security RSS Feed at: <https://www.siemens.com/industrialsecurity>.

Table of Contents

Legal information	2
1 Purpose	4
2 Solution	4
2.1 Overview.....	4
2.2 Hardware and Software Components	5
2.2.1 Validity	5
2.2.2 Components Used.....	5
3 TIA Export Graphics Tool	6
3.1 Requirements	6
3.2 SIEMENS TIA Openness	6
3.2.1 Installing WinCC (TIA Portal) V17 via the Installation DVD	6
3.2.2 Installation WinCC (TIA Portal) V17 via the Installation Program	7
3.2.3 Assigning the Current User to the “Openness” Group	8
3.3 Downloading the TIA Export Graphics Tool	8
3.4 Exporting Graphics	9
3.5 Adding Edited Graphics to the Project	11
4 Appendix	12
4.1 Service and support	12
4.2 Industry Mall	13
4.3 Links and literature	13
4.4 Change documentation	13

1 Purpose

Microsoft's Windows operating system provides "MS Paint" for the processing of graphics.

This software is sufficient for minor changes to graphics.

In order to use external graphics editing programs with a greater range of functions, the existing graphics must be exported and saved to a separate directory. In addition, it is necessary to keep the properties and the file type (e.g., "png, jpg").

2 Solution

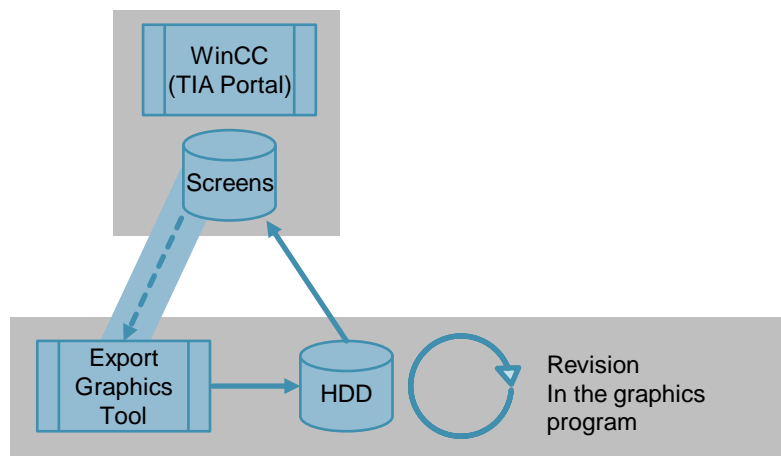
2.1 Overview

The "Export Graphics Tool" allows you to export graphics from a WinCC (TIA Portal) configuration to a local directory. The graphics are saved with their original file type and the associated properties (e.g., transparency).

Opening graphics with a defined graphics program makes editing graphics more efficient.

After editing the graphics, they are reinserted into TIA Portal's Project Graphics using drag & drop.

Figure 2-1



Note

The "Export Graphics Tool" option is version-dependent and **must** match the WinCC (TIA Portal) version used.

If, for example, you are using WinCC (TIA Portal) V17, you must use "Export Graphics Tool" version V17.

2.2 Hardware and Software Components

2.2.1 Validity

The application example is valid for WinCC (TIA Portal) V17 or higher.

2.2.2 Components Used

The application example was created with the following components:

Software components

Table 2-1

Component	Qty.	Article number	Note
SIMATIC WinCC Comfort/Advanced V17	1	6AV2102-0AA07-0AA5	Alternatively, WinCC Professional V17
SIMATIC TIA Openness V17	1	--	Included in the WinCC (TIA Portal) V17 installation.

Example files and projects

The following list contains all files and projects used in this example.

Table 2-2

Component	Note
109562021_TIA_Export_Graphics_Tool_DOC_v50_en.pdf	This document.
109562021_TIA_Export_Graphics_Tool_V17.zip - TIA Portal Export Graphics.exe	Export Tool

3 TIA Export Graphics Tool

3.1 Requirements

- WinCC (TIA Portal) V17 is installed on the PC.
- SIEMENS TIA Openness V17 is installed on the PC.
(For details see Chapter [3.2](#))
- On the configuration PC, the logged-in “user” is assigned to the “SIEMENS TIA Openness” group
- The “TIA Export Graphics Tool” V17 is available on the configuration PC.
- The WinCC (TIA Portal) configuration from which the files are exported from must be closed during the process.

3.2 SIEMENS TIA Openness

3.2.1 Installing WinCC (TIA Portal) V17 via the Installation DVD

Note

The “SIEMENS TIA Openness” software can be found on the 2nd installation DVD of WinCC Comfort/Advanced

- Install the “SIEMENS TIA Openness” software on the configuration PC.
- To start the setup, double-click the file name “SIEMENS_TIA_Openness_V17.exe”. Then follow the installation instructions.

You can find detailed information about the software under the Entry ID: [108716692](#) “TIA Portal Openness: Introduction and Demo Application”. This additional information is **not** required to implement the application example.

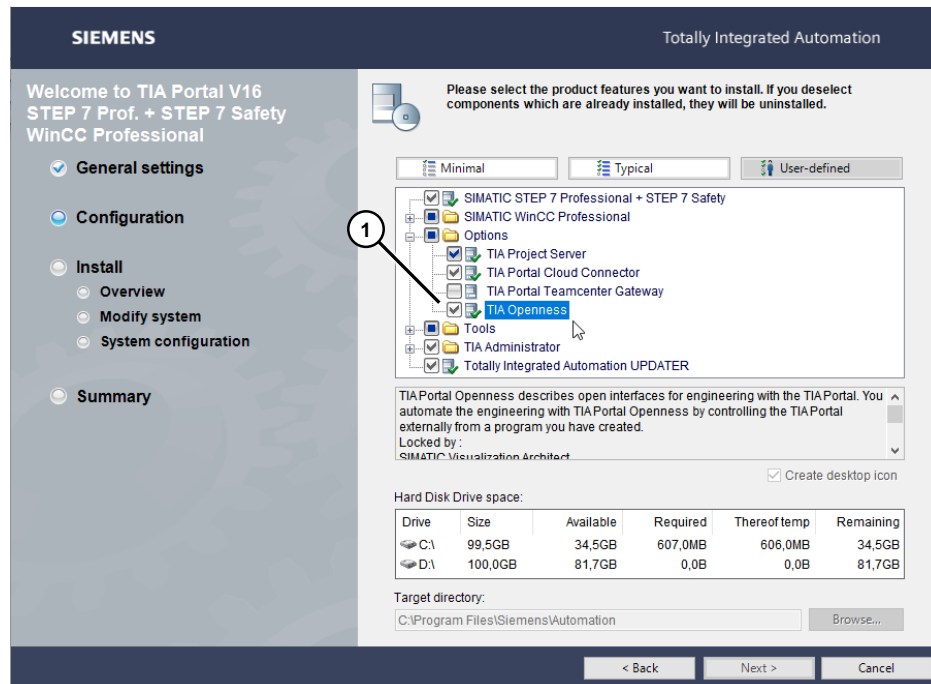
3.2.2 Installation WinCC (TIA Portal) V17 via the Installation Program

For WinCC (TIA Portal) V15 or higher, the “TIA Openness” software is part of the installation program.

In the STEP 7/WinCC installation program, go to the “Options” folder and check the “TIA Openness” check box (1).

If necessary, open the installation program again.

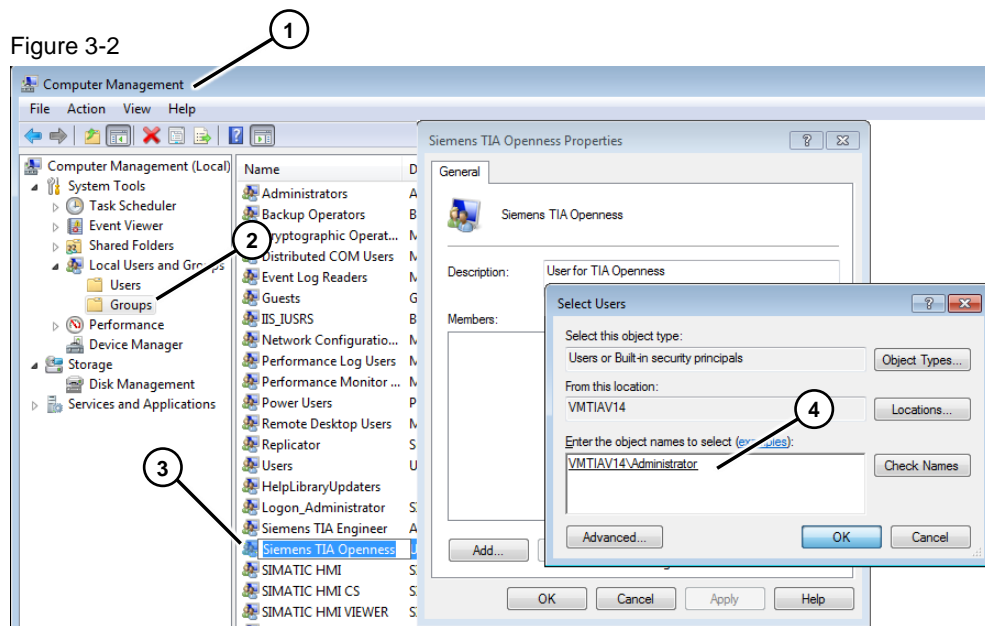
Figure 3-1



3.2.3 Assigning the Current User to the “Openness” Group

- On the configuration PC, open “Computer Management” (1).
“Windows Start menu > Control Panel > Administrative Tools > Computer Management”.
- Select the “System Tools” task card and navigate to the “Groups” folder (“Local Users and Groups > Groups”) (2).
- Assign the logged-in user to the “Siemens TIA Openness” group.
 - Open the group properties for “Siemens TIA Openness” (3).
 - In the open window, add the currently logged-in user/all persons who have a “user account” on this PC and will potentially use the tool (4).
 - Click the “OK” button to confirm your entries.

Figure 3-2



3.3 Downloading the TIA Export Graphics Tool

Download the “TIA Export Graphics Tool” from Online Support. You can find the tool under the Entry ID: [109562021](#) “Export Graphics Tool”.

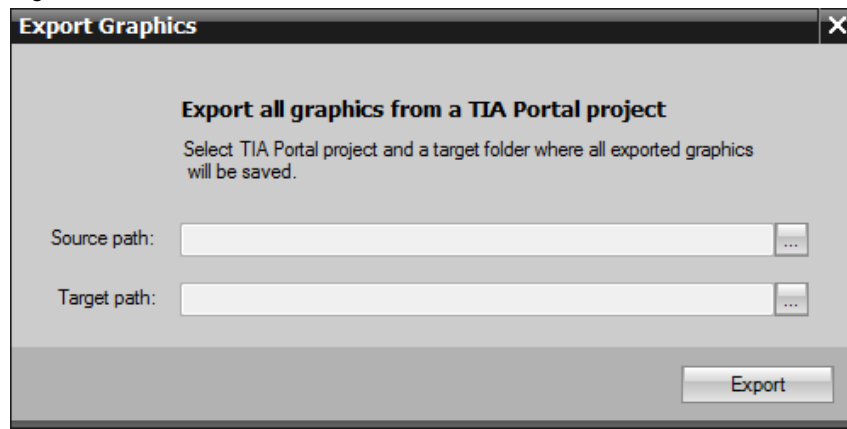
3.4 Exporting Graphics

Note It is assumed that the settings described in Chapter 3.1 “Requirements” have been applied.

Starting the tool

1. Close WinCC (TIA Portal).
2. Unpack the zipped file “109562021_TIA_Export_Graphics_Tool_V17” into a local directory.
3. Double-click the file name “TIA Portal Export Graphics.exe” to start the tool.
The tool’s user interface appears.

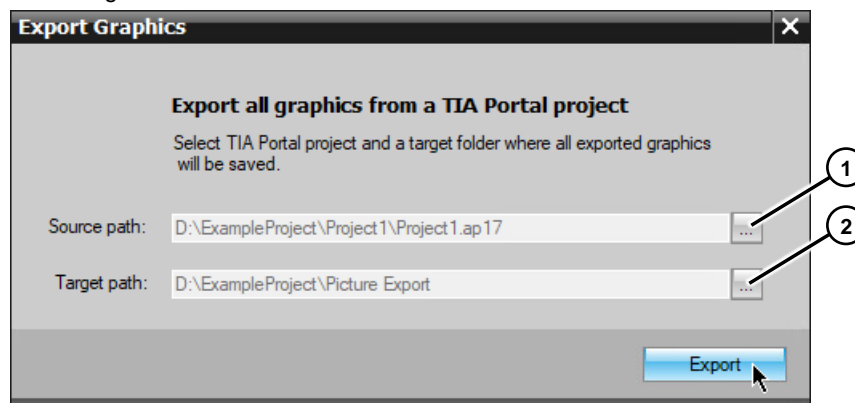
Figure 3-3



Selecting the project and target folder

1. Select the file path of the WinCC (TIA Portal) project from which the graphics will be exported (1).
2. Specify the file path where the exported graphics will be saved (2).
3. Select the “Export” button.

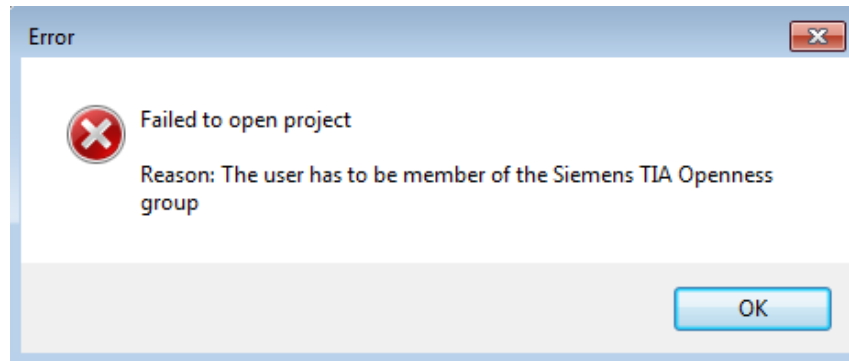
Abbildung 3-4



Possible error messages

If the below error message appears, the “user” currently logged in to the configuration PC is not assigned to the “Siemens TIA Openness” group. Check the settings you have made in “Computer administration” (see chapter [3.2.3](#) “Assigning the Current User to the “Openness” Group”).

Figure 3-5

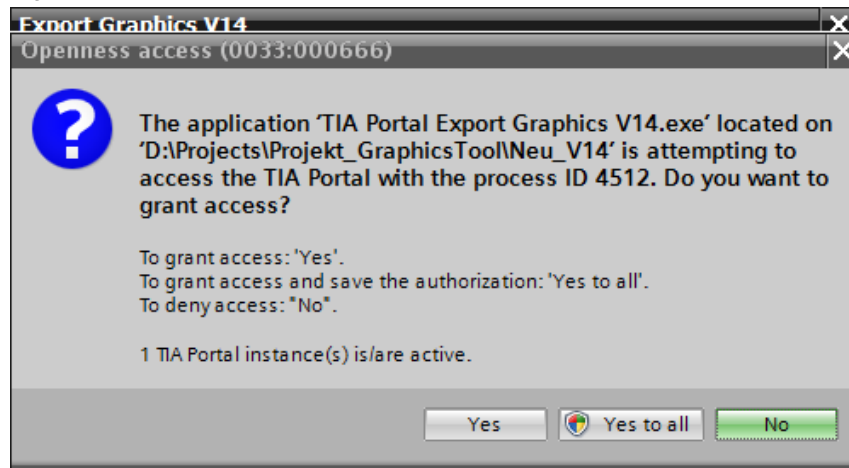


Security warning (using the example of WinCC V14)

The following security query appears while running the tool. The message is used to prevent unauthorized access to the project data.

Confirm this message accordingly.

Figure 3-6



Once all images have been downloaded from the configuration, the start screen with the user interface appears again.

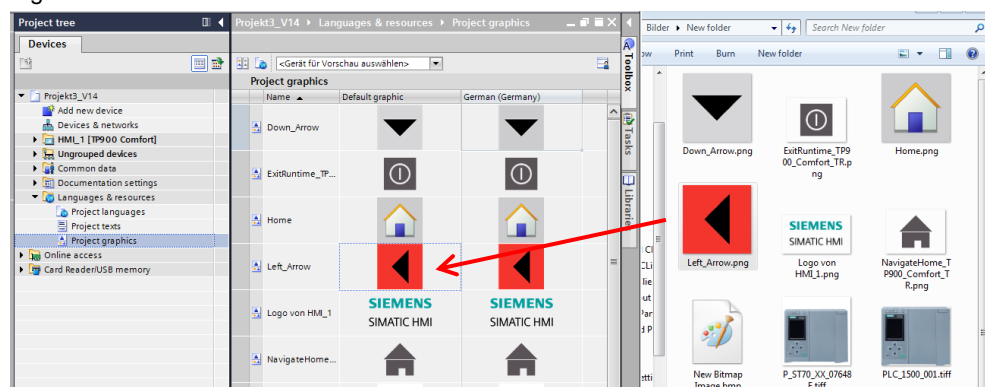
When editing the graphics, make sure to retain the file name and the file type so that the existing graphics in WinCC (TIA Portal) can be replaced with the edited graphics.

3.5 Adding Edited Graphics to the Project

Importing single graphics into WinCC (TIA Portal)

1. Open the WinCC (TIA Portal) configuration.
2. In the project navigation, open “Project Graphics” (“Language & resources > Project graphics”).
3. Open the Windows Explorer folder that contains the exported and edited graphics.
4. Using drag & drop, drag the graphic to be replaced onto the “old/existing” graphic in the Project Graphics.

Figure 3-7



Importing all graphics into WinCC (TIA Portal)

To update all graphics at once, proceed as follows:

1. Save your project.
2. Open the WinCC project and navigate in the project directory to the Project Graphics (“Language & resources > Project graphics”).
3. In the “Project Graphics” folder, select all of the graphics and delete them.
4. Open the Windows Explorer folder that contains the exported and edited graphics.
5. Select all of the graphics and use drag & drop to move them to the “empty” Project Graphics folder.

4 Appendix

4.1 Service and support

Industry Online Support

Do you have any questions or need assistance?

Siemens Industry Online Support offers round the clock access to our entire service and support know-how and portfolio.

The Industry Online Support is the central address for information about our products, solutions and services.

Product information, manuals, downloads, FAQs, application examples and videos – all information is accessible with just a few mouse clicks:

support.industry.siemens.com

Technical Support

The Technical Support of Siemens Industry provides you fast and competent support regarding all technical queries with numerous tailor-made offers – ranging from basic support to individual support contracts.

Please send queries to Technical Support via Web form:

support.industry.siemens.com/cs/my/src

SITRAIN – Digital Industry Academy

We support you with our globally available training courses for industry with practical experience, innovative learning methods and a concept that's tailored to the customer's specific needs.

For more information on our offered trainings and courses, as well as their locations and dates, refer to our web page:

siemens.com/sitrain

Service offer

Our range of services includes the following:

- Plant data services
- Spare parts services
- Repair services
- On-site and maintenance services
- Retrofitting and modernization services
- Service programs and contracts

You can find detailed information on our range of services in the service catalog web page:

support.industry.siemens.com/cs/sc

Industry Online Support app

You will receive optimum support wherever you are with the "Siemens Industry Online Support" app. The app is available for iOS and Android:

support.industry.siemens.com/cs/ww/en/sc/2067

4.2 Industry Mall



The Siemens Industry Mall is the platform on which the entire Siemens Industry product portfolio is accessible. From the selection of products to the order and the delivery tracking, the Industry Mall enables the complete purchasing processing – directly and independently of time and location:

mall.industry.siemens.com

4.3 Links and literature

Table 4-1

	Subject
\1\	Siemens Industry Online Support https://support.industry.siemens.com
\2\	TIA Export Graphics Tool https://support.industry.siemens.com/cs/ww/en/view/109562021
\3\	SIMATIC WinCC V17 (SIMATIC TIA Openness V17) delivery release https://support.industry.siemens.com/cs/ww/en/view/109795525

4.4 Change documentation

Table 4-2

Version	Date	Change
V1.0	02/2015	First edition
V2.0	03/2017	Updated to WinCC V14
V2.0	05/2017	Updated to WinCC V14 SP1
V3.0	03/2019	Updated to WinCC V15/V15.1
V4.0	03/2020	Updated to WinCC V16
V5.0	07/2022	Updated to WinCC V17