

# SIEMENS

## SIMATIC PC

### Panel PC 577 Installation Using the Docu & Drivers CD 10/2005

#### Installation Guide

Preface, Table of Contents

Introduction

Documentation

Installing Drivers

Other Software

Browsing Through the CD

General Information

Appendix

1

2

3

4

5

6

This Installation Guide is valid for units with the following order numbers:

Panel PC 577: 6AV782...

Release 10/05

## Safety Guidelines

This manual contains notes which you should observe to ensure your own personal safety, as well as to protect the product and connected equipment. These notices are marked as follows according to the level of danger:



---

### Danger

indicates an imminently hazardous situation which, if not avoided, **will** result in death or serious injury.

---



---

### Warning

indicates a potentially hazardous situation which, if not avoided, **could** result in death or serious injury.

---



---

### Caution

used with the safety alert symbol indicates a potentially hazardous situation which, if not avoided, may result in minor or moderate injury.

---

---

### Caution

used without the safety alert symbol indicates a potentially hazardous situation which, if not avoided, may result in property damage.

---

---

### Notice

indicates that unwanted events or status can occur if the relevant information is not observed.

---

---

### Note

draws your attention to particularly important information about the product, proper handling of the product, or to a particular part of the documentation.

---

## Qualified Personnel

Equipment may be commissioned and operated only by **qualified personnel**. Qualified personnel within the meaning of the safety notices in this manual are persons who are authorized to commission, ground and identify equipment, systems and circuits in accordance with safety engineering standards.

## Correct Usage

Please note the following:



---

### Warning

The device may only be used for the application cases specified in the catalog and the technical description and may only be used in combination with third-party equipment and components recommended or approved by Siemens.

Startup must not take place until it is established that the machine which is to accommodate this component is conforms with the guideline 98/37 EC.

Appropriate transport, storage, installation, and assembly as well as careful operation and maintenance are required to ensure that the product operates flawlessly and safely.

---

## Trademarks

The registered trademarks of the Siemens AG can be found in the preface.

## Masthead

Editor and Publisher: A&D SE DT RD

### Copyright Siemens AG 2005 All rights reserved

The transmission and reproduction of this documentation and the exploitation and communication of its contents are not permitted without express authority. Offenders will be liable for compensation for damage. All rights reserved, especially in the case of the granting of a patent or registration of a utility model or design.

Siemens AG  
Bereich Automation & Drives  
Geschäftsgebiet SIMATIC HMI  
Postfach 4848, D-90327 Nürnberg  
Siemens Aktiengesellschaft

### Disclaimer of Liability

We have checked the content of this publication for compliance with the described hardware and software. However, discrepancies cannot be excluded, with the result that we cannot guarantee total compliance. The information in this publication is, however, checked regularly, and any necessary corrections are included in the following editions. We welcome any suggestions for improvement.

© Siemens AG 2005  
Technical data subject to change.

Release 10/05

# Preface

## About this manual

This Installation Guide is not enclosed with the delivery of the SIMATIC Panel PC 577.

---

### Note

This Installation Guide is only valid for the Panel PC 577 ordered from Siemens AG and supplied without an operating system.

---

## Notation

Different font formats simplify orientation within the text:

<i>Motor on</i>	The text on the screen of the operating unit is displayed in typewriter font.
<i>Output</i>	Inputs and outputs on the screen of the operating unit are displayed in italic typewriter font.
<i>File → Edit</i>	Menu items, dialog names, tab controls and buttons of the operating system and the application are displayed in italic font.

The complete path is always described with menu items.

## Trademarks

The following names are registered trademarks of the Siemens AG:

- SIMATIC®
- SIMATIC HMI®
- SIMATIC Panel PC®
- HMI®
- ProTool®
- ProTool/Lite®
- ProTool/Pro®

The remaining trademarks in this publication may be trademarks whose use by third parties for their own purposes could violate the rights of the owner.

# Contents

<b>1</b>	<b>Introduction .....</b>	<b>1-2</b>
1.1	General Information.....	1-2
1.2	Conditions for Installation .....	1-3
1.2.1	BIOS versions .....	1-3
1.2.2	Service packs .....	1-3
1.2.3	Partitions .....	1-3
1.3	Starting the Docu & Drivers CD .....	1-4
<b>2</b>	<b>Documentation .....</b>	<b>2-1</b>
2.1	Documents .....	2-2
2.2	Dimensioned Drawing .....	2-2
2.3	SIMATIC .....	2-3
2.4	Softkey Labeling Strips Templates.....	2-4
<b>3</b>	<b>Installing Drivers and Tools .....</b>	<b>3-1</b>
3.1	Installation of Drivers.....	3-2
3.2	Installation of Tools .....	3-4
<b>4</b>	<b>Other Software .....</b>	<b>4-5</b>
<b>5</b>	<b>Browsing Through the CD.....</b>	<b>5-6</b>
<b>6</b>	<b>General Information .....</b>	<b>5-1</b>
<b>7</b>	<b>Appendix.....</b>	<b>a</b>

# 1 Introduction

## 1.1 General Information

All the information below relates to the following SIMATIC Panel PCs with a touch front or key front:

Panel PC 577: 6AV782...

In the case of a Panel PC 577 without an operating system installed, drivers which are not part of the scope of delivery must be installed later. To complete the installation, various conditions must be fulfilled and are explained below.

Information concerning driver installation for the following operating systems is provided for:

- Microsoft Windows 2000
- Microsoft Windows XP

No detailed information is provided on installation of the operating system itself. The information applies to the operating system languages English and German.

Enclosed with the Simatic Panel PC 577 is the "Panel PC 577 Documentation & Drivers" CD 10/2005 (order number: A5E00466223). All the necessary drivers are included on it.

---

### Note

Connect an external mouse and PS/2 keyboard for the following installation procedures.

---

## 1.2 Conditions for Installation

### 1.2.1 BIOS versions

Ensure that at least the BIOS version **V5.0 R2.14.1562.01** or later are installed on the PC.

### 1.2.2 Service packs

Before installing the Service Pack, check whether the Service Pack language corresponds to the language of the operating system installed.

The following Service Packs are required:

- **Windows 2000**  
SP4 or later
- **Windows XP**  
SP2 or later

### 1.2.3 Partitions

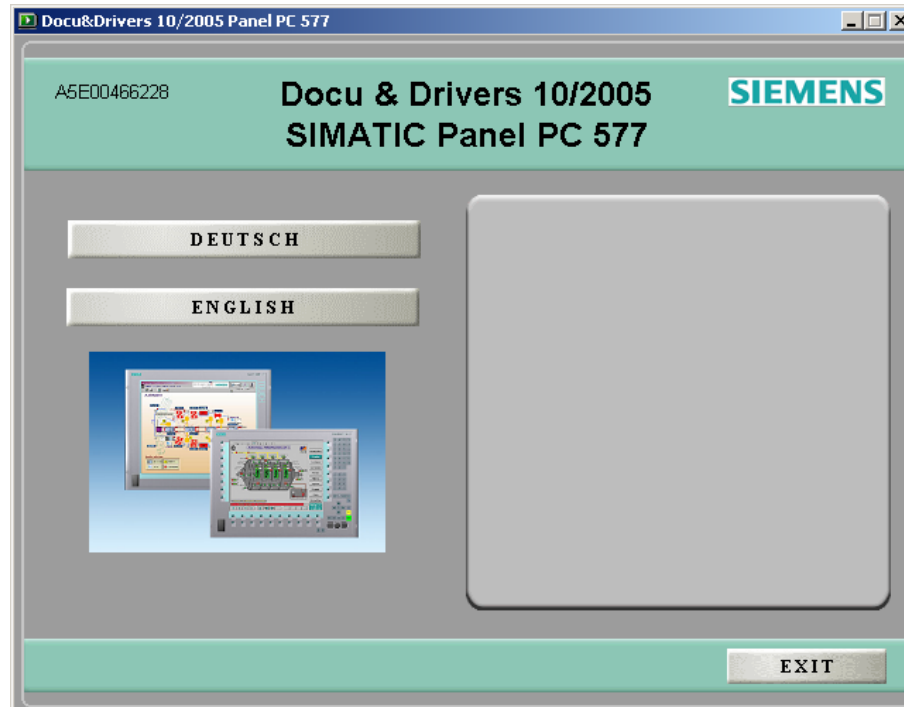
It is recommended to create the following partitions on the hard disk:

- **Windows 2000**
  - Drive C:  
Size: 10 Gbyte, Format: NTFS, active status
  - Drive D:  
Size: Rest, Format: NTFS
- **Windows XP**
  - Drive C:  
Size: 10 Gbyte, Format: NTFS, active status
  - Drive D:  
Size: Rest, Format: NTFS

Install the operating system required according to the installation instructions provided by Microsoft. Select the standard configuration. During the operating system installation, ignore the Network Installation menu option. The network card is installed at a later date. (Refer to Ch. 3.1).

### 1.3 Starting the Docu & Drivers CD

The interactive operator menu of the Docu & Drivers CD is started after activating the "CDStart.exe" program.



First, select the required user language, whereby the languages "German" and "English" are available.

Adobe Reader is required in order to view instructions and technical drawings. For simpler operation, it can be installed using the operator menu.

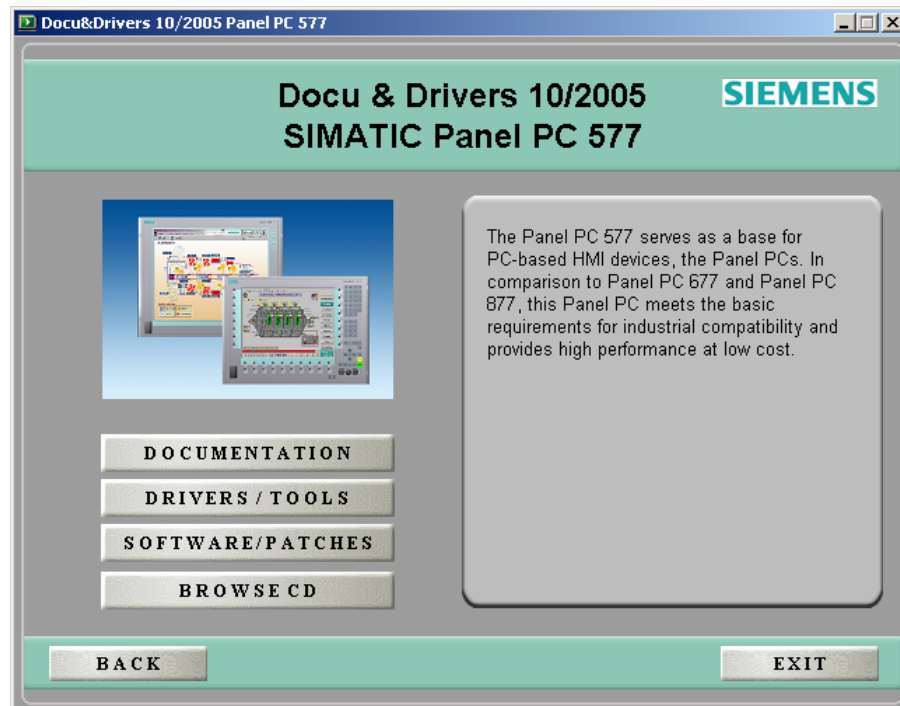
---

#### Note

After the language selection, a message appears indicating the Panel PCs for which the drivers contained on the CD can be used. It is essential to pay attention to this message.

---

Click the "Next" button to access the next selection menu on the Docu & Drivers CD.



The individual menu options are explained in the following chapters.





## 2 Documentation

# 2

Click the "*Documentation*" button in the Docu & Drivers CD selection menu to call in the Documents menu:

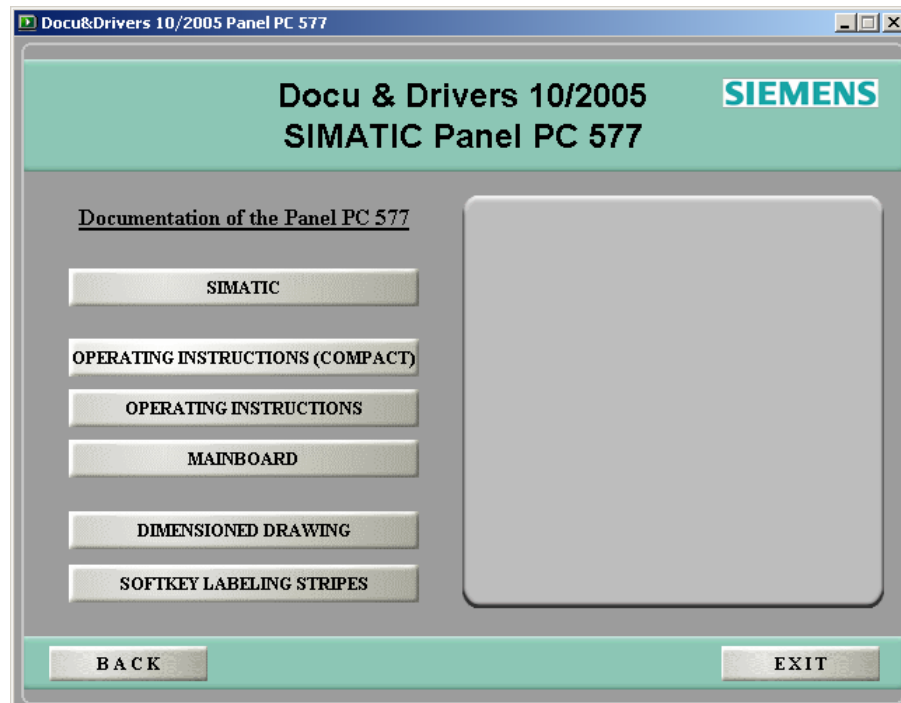
This provides access to manuals, drawings and templates:

### Panel PC 577:

- Quickstart 577
- Operating instructions 577
- Manual of the Mainboard D1562/D1561
- Dimensioned Drawing 577
- Softkey Labeling Strips Templates

### Simatic:

- SIMATIC NET PROFIBUS Networks (manual)



## 2.1 Documents

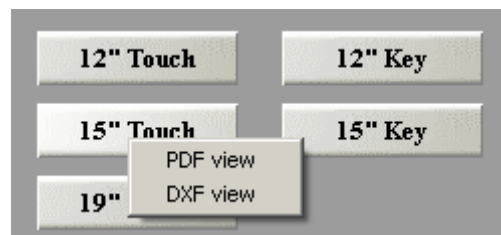
The documents "Quickstart" and "Operating Instructions" are available in five languages and the manual of the mainboard in german and english. All documents are PDF format.

The language is selected by clicking on the respective button.



## 2.2 Dimensioned Drawing

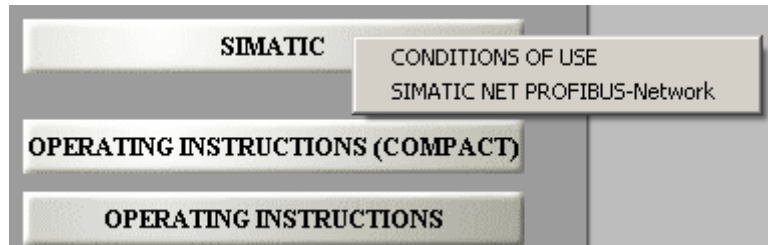
Access to the relevant "Dimensioned Drawing" button is available from the computer units' Documentation Menu and then by selecting the display size of your Panel PC 577.



The menu is used to select the respective drawing in either PDF format or as a construction file (DXF view).

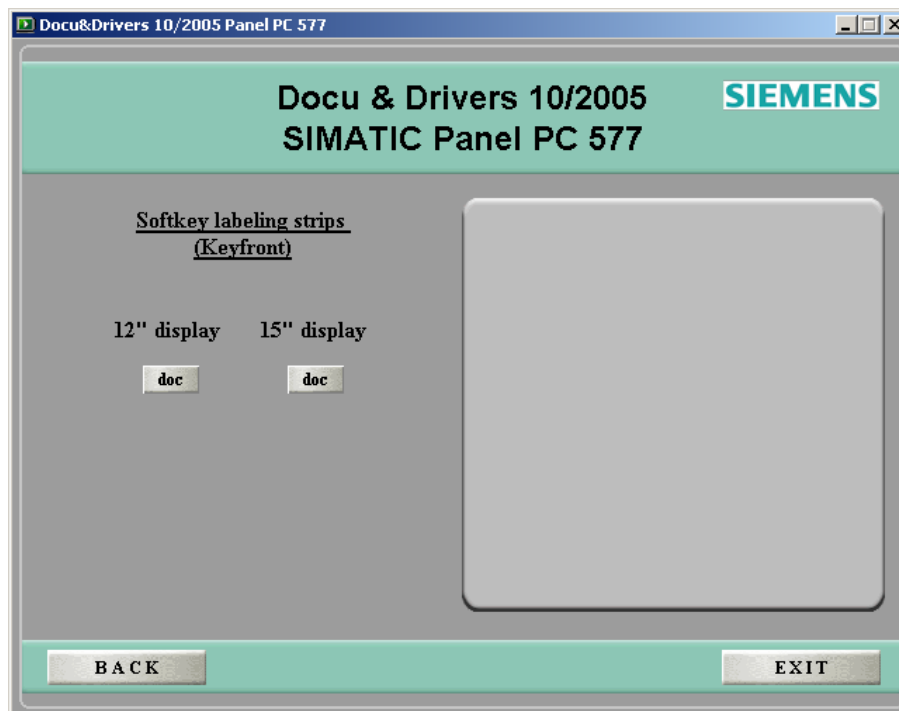
## 2.3 SIMATIC

In this menu you find the manual "*SIMATIC NET PROFIBUS Networks*" as PDF format.



Before opening the documentation please read the conditions of use!

## 2.4 Softkey Labeling Strips Templates

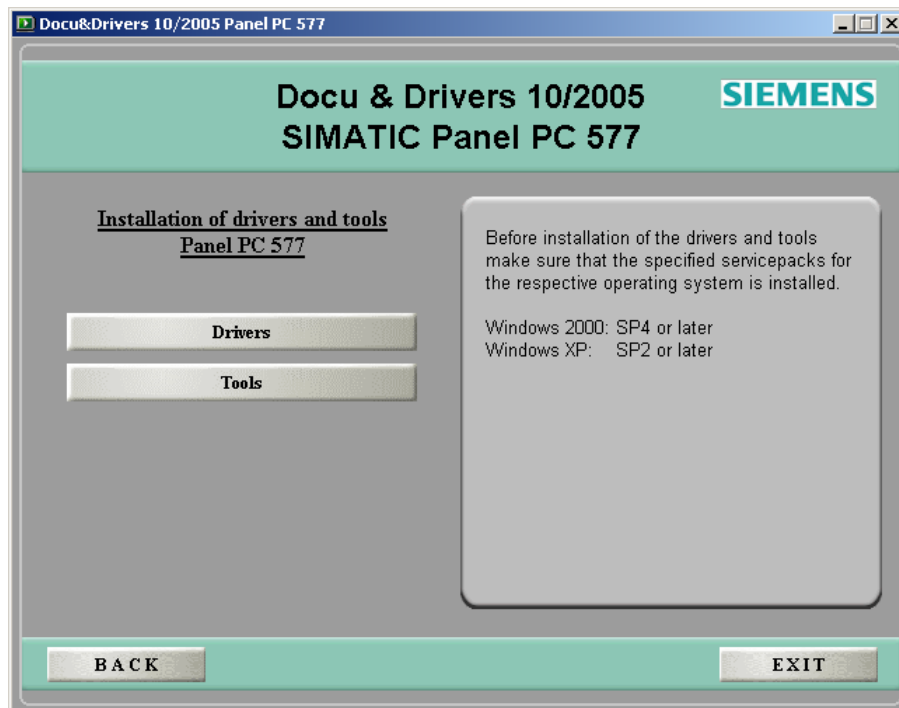


This contains templates for the key panels with various display sizes to print labeling strips as MS WORD® format.

### 3 Installing Drivers and Tools

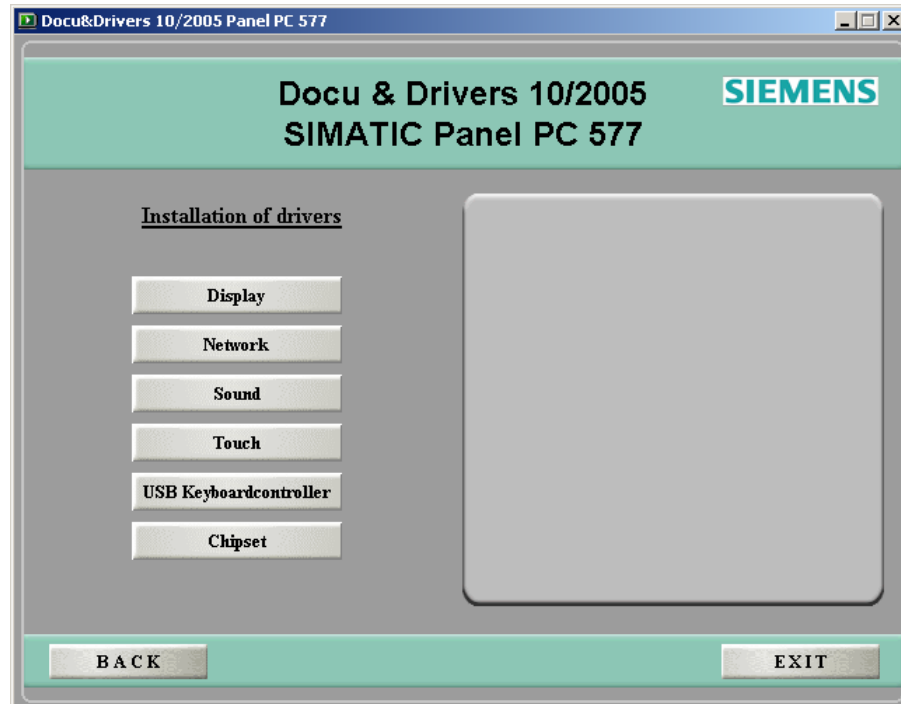
# 3

Click on the "Driver/Tools" button in the Docu & Drivers CD selection menu to call in the Driver menu:



This menu is used to select the menu for installation of drivers or tools.

### 3.1 Installation of Drivers



Following the installation of Windows, the "Plug and Play" hardware detection integrated detects new hardware directly after a restart. However, some devices only become functional following manual installation of the respective driver.

To use current versions of drivers install the drivers being available on the CD in the order from above to below like the buttons in the menu are represented.

Information on this appears on the respective right-hand side as help text or at the installation instructions.

---

#### Notice

It may also be necessary to restart the system to activate the drivers. Further information on this is available from the operator menu or the respective installation instructions.

---

## Special features

### USB Keyboardcontroller

The USB Keyboardcontroller will only be installed at Panel PC 577 with key panels.

If the USB Keyboardcontroller is not installed, the entry "*Panel Function*" is marked in the device manager of the control panel.

### Touch

During the installation of the UPDD software use the default setting in the corresponding dialogue windows.

After the installation a calibration of the air front should be carried out. So call the shortcut *Calibrate* in the menu *Start->Programs->UPDD*.

.

### Event Selector

After the installation of the touch software the "*Event Selector*" appears in the left upper corner of the display, which makes the simulation of the right mouse button on touch displays possible.

For the simplified handling of this application we recommend to move the window into the right lower corner. So that this window appears at call or restart in this place again and again, you must immediately close this window after moving the window to the desired position and call about *Start -> Programs -> UPDD -> Event Selector* once more.

---

### Note

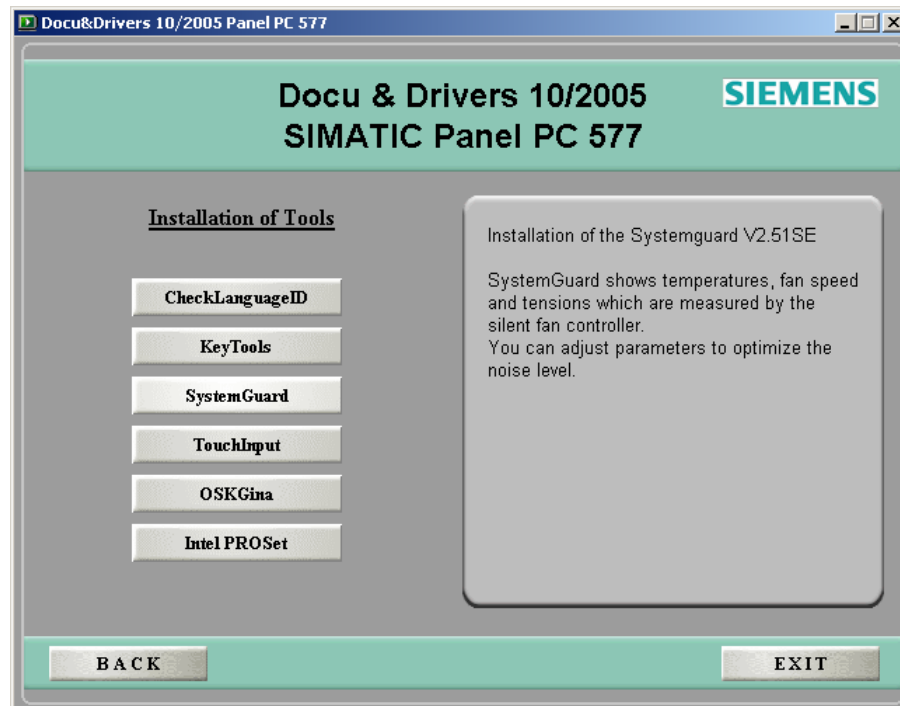
When the operating system has been fully installed with the listed drivers and applications, the *Network controller* entry in *Other devices* is assigned an exclamation mark.

This network controller indicates the MPI interface. A corresponding driver is supplied with appropriate software; e.g. Step7, ProTool, WinCC, WinCC flexible, WinAC or Simatic Net.

---



## 3.2 Installation of Tools



The utility programs can be installed in any sequence via the menu. Information on this appears on the respective right-hand side as help text.

### Special features

#### OSKGina

OSKGina is a virtual OnScreenKeyboard, which only appears at the Windows logon screen. By clicking this button you will install the OnScreenKeyboard.

---

#### Note

During installation of the OSKGina it will not be activated. This means the OnScreenKeyboard will not appear at the Windows logon screen. You obtain additional information from the product support.

---

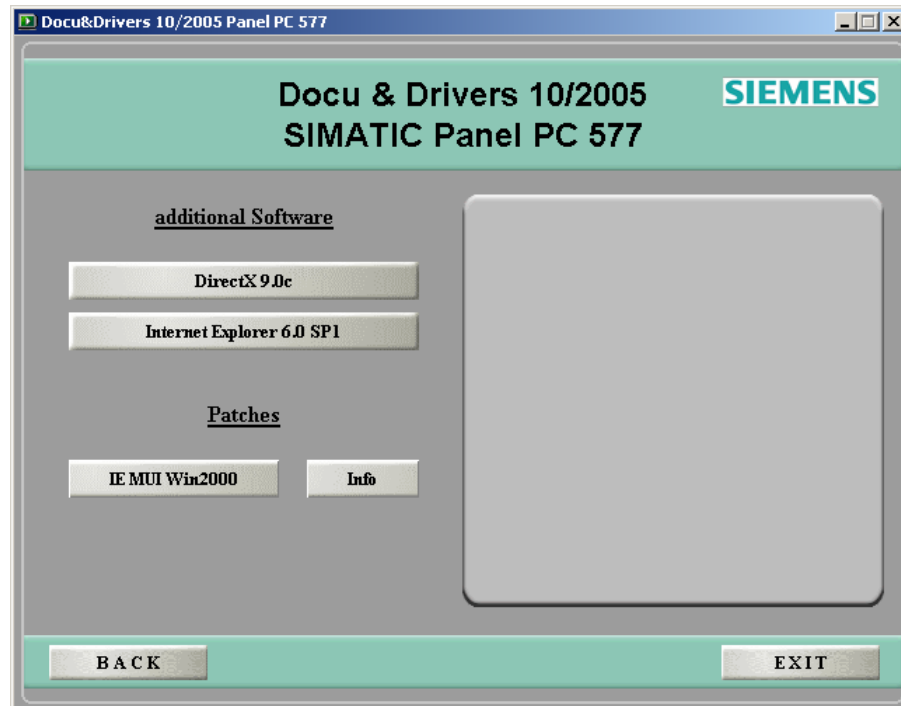
#### KeyTools

KeyTools is only used at key panels and requires that the USB-Keyboardcontroller is installed before. Read additional information of Keytools in this document at chapter 6 "*General Information*".

## 4 Other Software

# 4

Click on the *Other software* button in the Docu & Drivers CD selection menu to call in the Driver Installation menu:



### Internet Explorer 6.0 SP1

Install the Internet Explorer 6.0 with Service Pack 1 by clicking this button.

### DirectX 9.0c

DirectX 9.0c can be installed later, according to requirements.

---

#### Note

DirectX is used by certain programs and certain hardware; e.g. multimedia applications, video transmissions.

---

### Patches

At "*Patches*" there are the multilingual-patches for the Internet Explorer 6 installed at a Windows2000 system. Detailed descriptions of the patches and more information you get at the button "*Info*".

Further information on the patches is available in Internet on the Microsoft homepage under [www.microsoft.com](http://www.microsoft.com).

## **5 Browsing Through the CD**

# **5**

On clicking the “*Browse CD*” button in the main menu, Windows Explorer opens and can be used to browse through the CD and its folders.

## 6 General Information

# 6

### Functions of KeyTools:

#### Key lock (KEYHOOK)

---

##### Caution

For security reasons, it is essential to install the Keyhook tool in the case of units with a front keyboard.

---

The program contains two functions:

- Function 1 (only required for WinCC):  
The KeyHook tool serves to exchange the keycodes of function keys F13 to F20 and S1 to S16 on a Panel PC with front keyboard on which the WinCC application will be run.  
Call in  
*Start -> Settings -> Control Panel -> Keyboard, KeyHook tab control: Start Now* button
- Function 2 (is required for all SIMATIC Panel PCs with front keyboard)  
The KeyHook 2.x version involves the installation of a mutual key lock of function keys F1 to F20 and S1 to S16. If several function keys are pressed simultaneously, only the function of the key pressed first is activated. All the other function keys are suppressed.

#### Programming the keyboard (KEYPAD)

This tool enables the modification of the assignment of keycodes to individual keys. After loading the relevant standard table, it is possible to edit the assignment of the individual keys. The changes made are transferred to the keyboard controller by clicking on the "Send" switch and saved there in a nonvolatile memory.

#### USB Keyboardcontroller

After installation of the USB Keyboardcontroller the keyboard programming is possible at the panel PC 577 key units.

Refer to the descriptions on the CD for details on the installation routine.



# 7 Appendix

# 7

## Abbreviations

ANSI	American National Standards Institute
ASCII	American Standard Code for Information Interchange
BIOS	Basic Input Output System
CD-ROM	Compact Disk – Read Only Memory
CPU	Central Processing Unit
DC	Direct Current
DHCP	Dynamic Host Configuration Protocol
DNS	Domain Name Service
DP	Decentralized Periphery
DSN	Data Source Name
ESD	Electrostatically Sensitive Device
EMC	Electromagnetic Compatibility
HF	High Frequency
HMI	Human Machine Interface
IF	Interface
LCD	Liquid Crystal Display
LED	Light Emitting Diode
Mbps	Megabits per second
PC	Personal Computer
PU	Programming Unit
PPI	Point to Point Interface (SIMATIC S7)

PS/2	Personal System 2
PLC	Programmable Logic Controller
TCP/IP	Transmission Control Protocol/Internet Protocol
USB	Universal Serial Bus
VGA	Video Graphics Array