

SIMOTION

Frequently asked Questions

How Can SIMOTION SCOUT Be Used Without Starting SCOUT?

SIEMENS



Online Help

Table of Contents

1	Question	3
2	Solution	4

Online Help

1 Question

The SIMOTION SCOUT online help includes important information complementary to the PDF documents of the SIMOTION documentation.

The index search and the entry of search keys are convenient search options that provide quick access to all subjects concerning SIMOTION.

In particular, the online help informs the user about SINAMICS drives including all modules, MICROMASTER and the ET200S drive.

How can this help be used on a PC on which SIMOTION SCOUT has not yet been installed?

Online Help

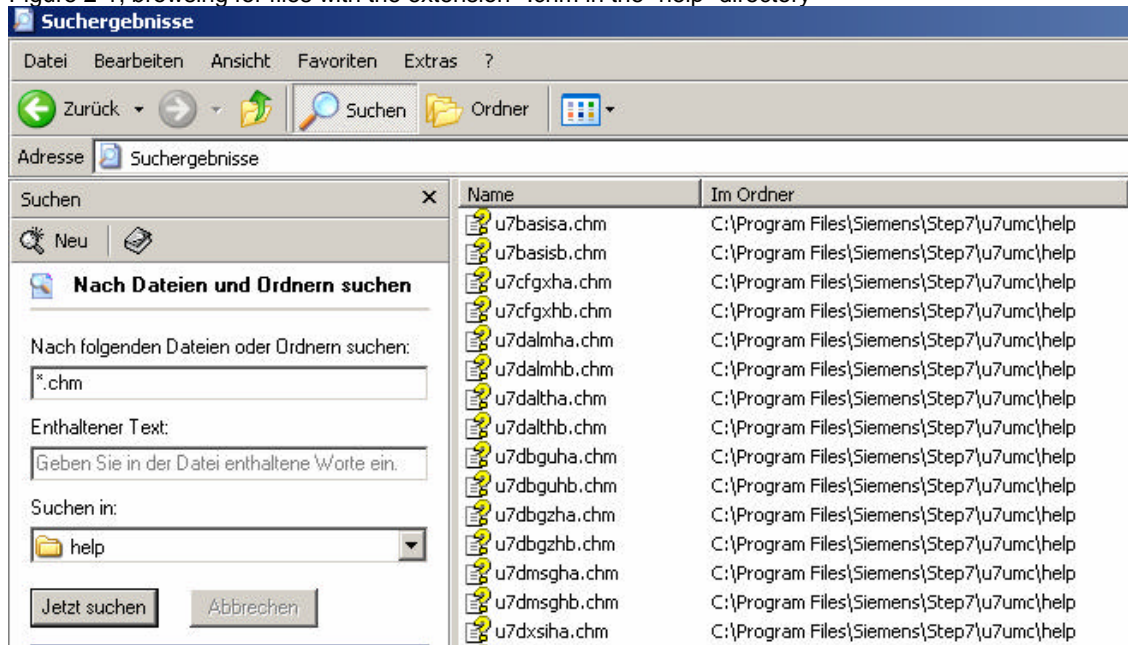
2 Solution

Help files have the file extension *.chm.

To use these help files available in HTML format, SIMOTION SCOUT must have been installed.

The "u7umc" folder, including e.g. the "doc" and "help" subfolders, is created upon the installation of SCOUT (usually under C:\Programs\Siemens\Step7\). The "help" folder and its subfolders hold the help files with the file extension *.chm. The user can browse for these files using the search function of the Windows Explorer.

Figure 2-1, browsing for files with the extension *.chm in the "help" directory

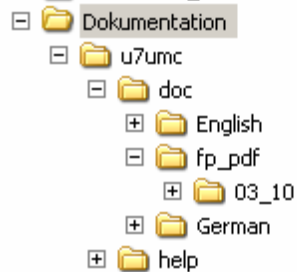


Since only these files are relevant, they can be copied to a separate directory. This directory must be designated "u7umc" and hold the "help" subdirectory. Press Ctrl + A to select all required files and copy them into this previously created directory (u7umc\help).

To include all PDF documents used in the online help, the "doc" directory with all subfolders and PDF documents must also be copied into the newly created "u7umc" directory.

Online Help

Figure 2-2, newly created "u7umc" directory with subfolders for German and English documentation



To open the German online help, double-click the "u7masxha.chm" file in the "u7umc\help" directory.

To open the English online help, double-click the "u7masxhb.chm" file in the "u7umc\help" directory.

Since these files can hardly be found in the long list, the user can e.g. write a batch file to call them up. For example, Notepad can be used for this purpose.

```
@ echo off
u7umc\help\u7masxha.chm
```

and save as Deutsch.bat, and

```
@ echo off
u7umc\help\u7masxhb.chm
```

and save as English.bat.

These batch files are located in the root directory of "u7umc", here: Documentation.

In this case, the EXE files for the execution of the tutorials for SIMOTION-D must also be copied into the "Documentation" directory.

```
u7d435ha.exe    German tutorial for D435
u7d435hb.exe    English tutorial for D435
```

These files can be found under the following path: C:\WINDOWS\SYSTEM32.

Online Help

Figure 2-3, contents of the "Documentation" directory with batch files and EXE files

Name	Größe	Typ	Geändert am
u7umc		Dateiordner	20.09.2005 15:32
Deutsch.bat	1 KB	Stapelverarbeitung...	20.09.2005 15:33
English.bat	1 KB	Stapelverarbeitung...	20.09.2005 15:33
u7d435ha.exe	7.863 KB	Anwendung	23.01.2004 06:55
u7d435hb.exe	7.566 KB	Anwendung	09.03.2004 16:55

For example, the contents of the "Documentation" directory can now be copied to a CD. The size of the directory is 258MB.

The German or English online help can be opened with a double click on the batch files.

If the batch files are not used and the online help is called up via the "masxha.chm" file in the "help" directory, the EXE files for the D435 tutorial must also be included in the "help" directory.