

SIEMENS

Ingenuity for life

Industry Online Support

Home

Which Frame Colors are Used for the SIMATIC Operating Units and SIMATIC IPCs?

HMI Operating Units, IPCs, Industry Monitors,
Industrial Thin Clients

<https://support.industry.siemens.com/cs/ww/en/view/28510510>

Siemens
Industry
Online
Support



This entry is from the Siemens Industry Online Support. The general terms of use (http://www.siemens.com/terms_of_use) apply.

Security Information

Siemens provides products and solutions with industrial security functions that support the secure operation of plants, systems, machines and networks. In order to protect plants, systems, machines and networks against cyber threats, it is necessary to implement – and continuously maintain – a holistic, state-of-the-art industrial security concept. Siemens' products and solutions only form one element of such a concept. Customer is responsible to prevent unauthorized access to its plants, systems, machines and networks. Systems, machines and components should only be connected to the enterprise network or the internet if and to the extent necessary and with appropriate security measures (e.g. use of firewalls and network segmentation) in place. Additionally, Siemens' guidance on appropriate security measures should be taken into account. For more information about industrial security, please visit <http://www.siemens.com/industrialsecurity>.

Siemens' products and solutions undergo continuous development to make them more secure. Siemens strongly recommends to apply product updates as soon as available and to always use the latest product versions. Use of product versions that are no longer supported, and failure to apply latest updates may increase customer's exposure to cyber threats. To stay informed about product updates, subscribe to the Siemens Industrial Security RSS Feed under <http://www.siemens.com/industrialsecurity>.

Contents

1	Description	4
1.1	Introduction.....	4
1.2	Colors Used.....	4
2	HMI Operator Panels	5
2.1	Key Panels	5
2.1.1	KP8.....	5
2.1.2	KP32 and Empty Front	6
2.2	Basic Panels.....	6
2.3	Basic Panels 2nd Generation.....	8
2.4	Mobile Panels x77 Series.....	9
2.5	Mobile Panels 2nd Generation	10
2.6	Comfort Panels.....	11
2.7	Operator Panels / Touch Panels	12
2.7.1	Operator Panels / Touch Panels 70 Series.....	12

2.7.2	170 Series	13
2.7.3	Touch Panels 170 Series 4"	14
2.7.4	270 Series	15
2.7.5	277 Series	15
2.8	Multi Panels	15
2.8.1	170 Series	15
2.8.2	270 Series	16
2.8.3	277 Series	16
2.8.4	370 Series	16
2.8.5	370 Series	16
2.9	Push Button Panels	17
2.10	Text Displays	17
2.11	Micro Panels	17
3	SIMATIC Industrial PCs	19
3.1	Rack PCs	19
3.1.1	IPC 347	19
3.1.2	IPC 547 (except IPC 547G)	19
3.1.3	IPC 547G	20
3.1.4	IPC 647/847	21
3.2	Box, Microbox and Nanobox PCs	22
3.2.1	Box PCs	22
3.2.2	Microbox PCs I	23
3.2.3	Microbox PCs II	23
3.2.4	Nanobox PCs	24
3.3	Panel PCs	25
3.3.1	IPC277D/E	25
3.3.2	Panel PC 477 embedded	26
3.3.3	Panel PC 577	27
3.3.4	Panel PC 677	27
3.3.5	Panel PC 877	27
3.3.6	SIMATIC Panel PCs with Multi-touch	27
3.4	SIMATIC Industrial Monitors	28
3.4.1	Flat Panel / SCD Monitors	28
3.4.2	Industrial Flat Panel (Single Touch or Key Devices)	28
3.4.3	Industrial Flat Panel (Multi-touch)	28
3.5	Thin Clients	29
3.5.1	SIMATIC Thin Clients	29
3.5.2	Industrial Thin Client	30
4	Special Type Pro Devices	31
4.1	Comfort Panel Pro	31
4.2	Flat Panel Monitors Pro	31
4.3	Thin Client Pro	32

1 Description

1.1 Introduction

This document gives you an overview of the colors of the components of SIMATIC Panels and Panel PCs.

By using these color values for your control cabinets, machines and plant parts you can achieve an overall optical match for your plant including the SIMATIC Panels and SIMATIC Panel PCs used.

1.2 Colors Used

The table below lists all the colors used for the different devices and components, their supplier code numbers (S no.) and their color spaces. Chapter 2 shows you which colors are used for which operating unit models.

Table 1-1

S. no.	Color	RAL	NCS Exact	NCS	Pantone	LAB
614	Anthracite grey	7016	8303-B19G	S 7502-B	7540 C	23 / -2 / -2
700	Light Basic ¹	-				
804	Black	9017				14 / 0 / 0
805	Silver grey	9006	2603-R86B	S 2502-B	Cool Gray 5 C	
2002	Fe-Grey	5014	4517-R95B	S 4020-R90B	2165 C	51 / -5 / -12
2003	Ti-Grey	7031	6410-R92B	S 6010-R90B	431 C	38 / -2 / -9
2005	R Pearl Dark Grey	9023	4301-R83B	S 5000-N	422 C	63,14 / -0,36 / -1,48
2006	R Pastel Turquoise	6034	2524-B40G	S 3020-B40G	5503 C	61 / -19 / 8
2011	Si-Orange	-			134	85 / 10 / 53
2015	Rt-Grey ²	-				
2025	Cb-Black	9005	8901-B05G	S 9000-N	Black 6 C	
	Siemens Petrol ³	5018		S 2555-B20G	321	
	Siemens Snow	9003		S 0300-N		

¹ No longer used

² Substitute color for plastic frames instead of R-Pearl Dark Grey

³ To be used exclusively for the SIEMENS logo

2 HMI Operator Panels

2.1 Key Panels

2.1.1 KP8

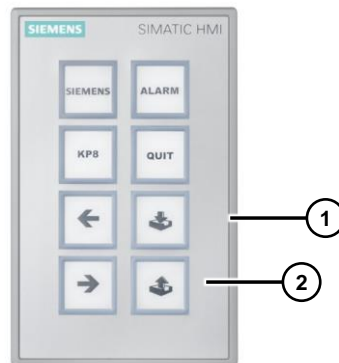
Type list

Table 2-1

Type	Order no.
KP8 PN	6AV3688-3AY36-0AX0
KP8F PN	6AV3688-3AF37-0AX0

Example

Figure 2-1



Colors used

Table 2-2

No.	Range	Supplier code no.	Color
1	Frame	2015	Rt-Grey
2	Background	2005	R Pearl Dark Grey

2.1.2 KP32 and Empty Front

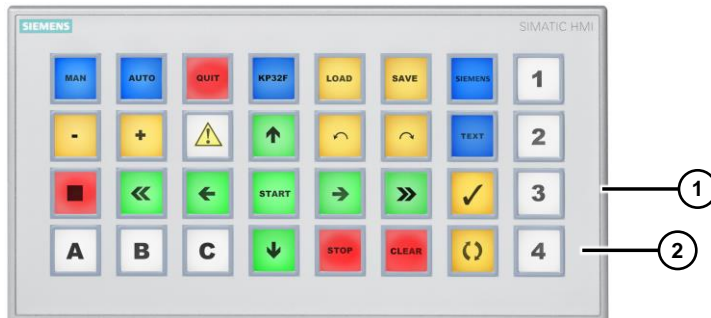
Type list

Table 2-3

Type	Order no.
Design empty front	6AV3688-3XY38-3AX0
KP32F PN	6AV3688-3EH47-0AX0

Example

Figure 2-2



Colors used

Table 2-4

No.	Range	Supplier code no.	Color
1	Frame	2005	R Pearl Dark Grey
2	Background		

2.2 Basic Panels

Type list

Table 2-5

Type	Order no.
SIMATIC BASIC Panels	6AV6647-0A..

Examples

Figure 2-3

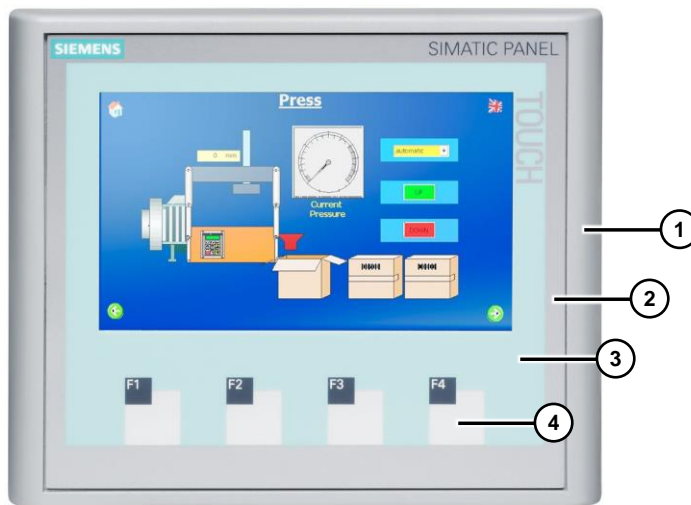
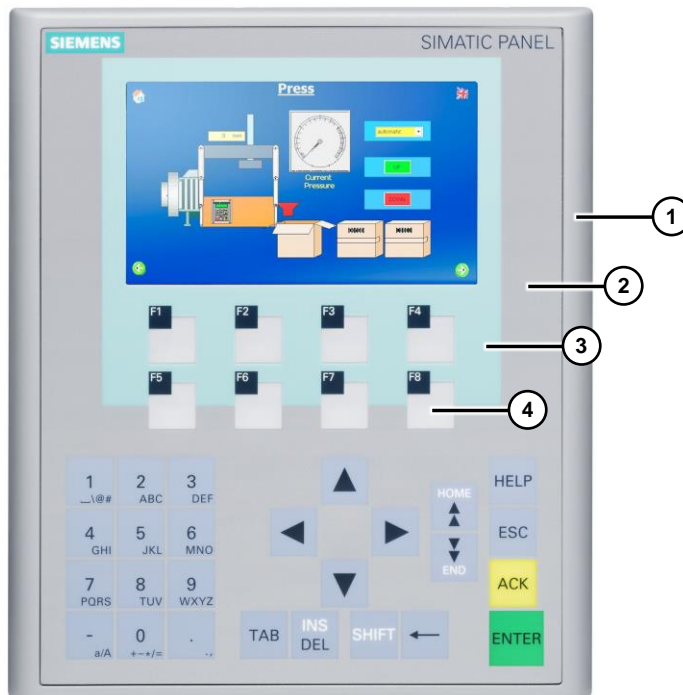


Figure 2-4



© Siemens AG 2017. All rights reserved

Colors used

Table 2-6

No.	Range	Supplier code no.	Color
1.	Frame	2005	R Pearl Dark Grey
2.	Background		
3.	Display	2006	R Pastel Turquoise
4.	Touch panel	2002	Fe-Grey

2.3 Basic Panels 2nd Generation

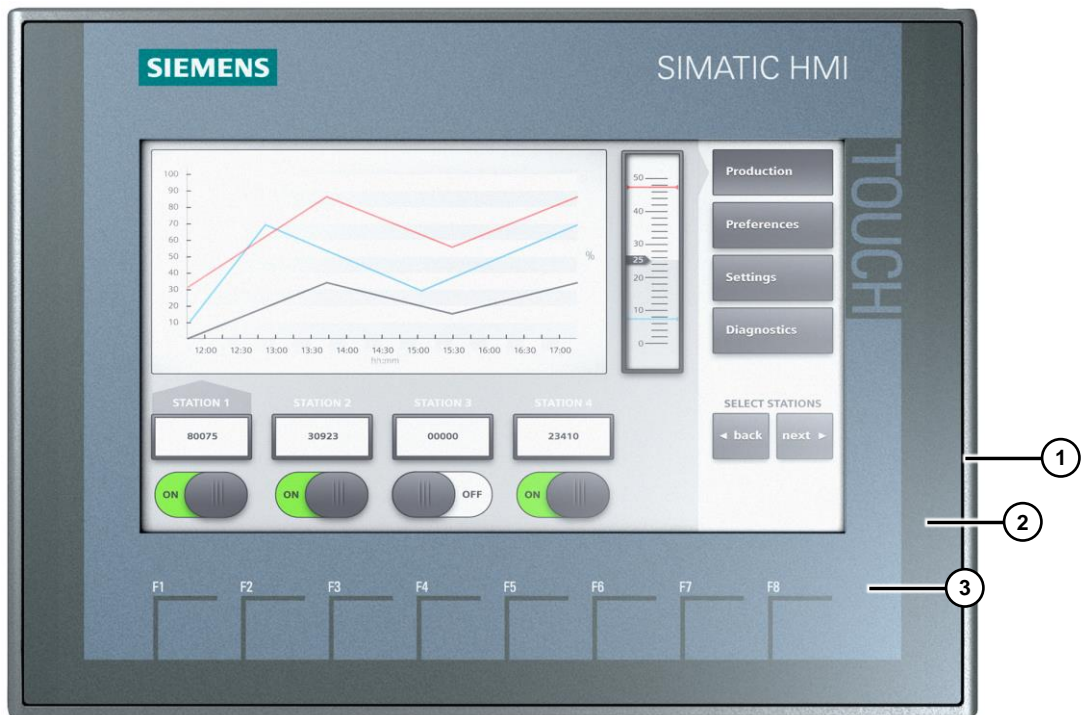
Type list

Table 2-7

Type	Order no.
KTP400 Basic	6AV2123-2DB03-0AX0
KTP700 Basic	6AV2123-2GB03-0AX0
KTP700 Basic DP	6AV2123-2GA03-0AX0
KTP900 Basic	6AV2123-2JB03-0AX0
KTP1200 Basic	6AV2123-2MB03-0AX0
KTP1200 Basic DP	6AV2123-2MA03-0AX0

Example

Figure 2-5



Colors used

Table 2-8

No.	Range	Supplier code no.	Color
5.	Frame	2005	R Pearl Dark Grey
6.	Outer background		
7.	Inner background	2002	Fe-Grey

2.4 Mobile Panels x77 Series

Type list

Table 2-9

Type	Order no.
MOBILE PANEL 170	6AV6545-4B...-....
MOBILE PANEL 177 DP	6AV6645-0A...-....
MOBILE PANEL 177 PN	6AV6645-0B...-....
MOBILE PANEL 277 10"	6AV6645-0BE02-0AX0
MOBILE PANEL 277	6AV6645-0C...-....
MOBILE PANEL 277(F) IWLAN	6AV6645-0D...-....
MOBILE PANEL 277F IWLAN V2	6AV6645-0E...-....
MOBILE PANEL 277 IWLAN (USA version) (V2)	6AV6645-0F...-....
MOBILE PANEL 277F IWLAN (USA version) (V2)	6AV6645-0G...-....

Example

Figure 2-6



Colors used

Table 2-10

No.	Range	Supplier code no.	Color
1.	Frame	614	Anthracite grey
2.	Outer background		
3.	Inner background	2005	R Pearl Dark Grey

2.5 Mobile Panels 2nd Generation

Type list

Table 2-11

Type	Order no.
KTP700 Mobile	6AV2125-2GB03-0AX0
KTP700F Mobile	6AV2125-2GB23-0AX0
KTP900 Mobile	6AV2125-2JB03-0AX0
KTP900F Mobile	6AV2125-2JB23-0AX0
Connection Box standard	6AV2125-2AE13-0AX0
Connection Box advanced	6AV2125-2AE23-0AX0

Examples

Figure 2-7



Figure 2-8



Colors used

Table 2-12

No.	Range	Supplier code no.	Color
1.	Frame	2003	Ti-Grey
2.	Outer background	2005	R Pearl Dark Grey
3.	Inner background	2002	Fe-Grey
4.	Display	804	Black

2.6 Comfort Panels

Type list

Table 2-13

Type	Order no.
Comfort Panels	6AV2124..

Examples

Figure 2-9

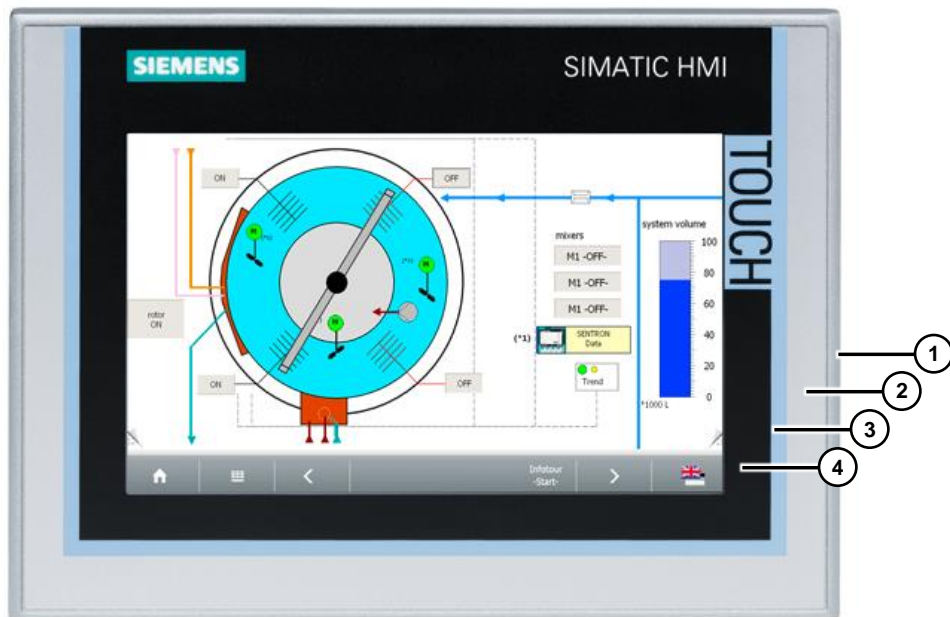
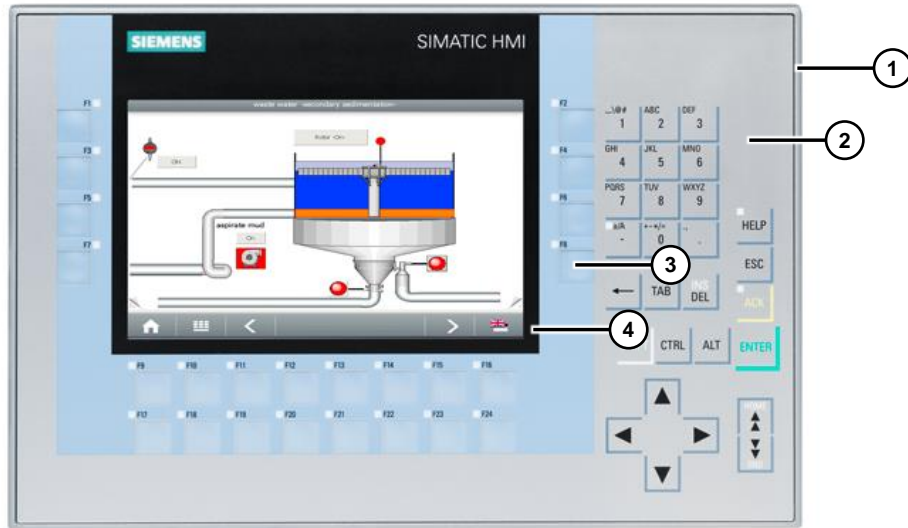


Figure 2-10



Colors used

Table 2-14

No.	Range	Supplier code no.	Color
1.	Frame	2005	R Pearl Dark Grey
2.	Outer background		
3.	Inner background	2002	Fe-Grey
4.	Display	804	Black

© Siemens AG 2017. All rights reserved

2.7 Operator Panels / Touch Panels

2.7.1 Operator Panels / Touch Panels 70 Series

Type list

Table 2-15

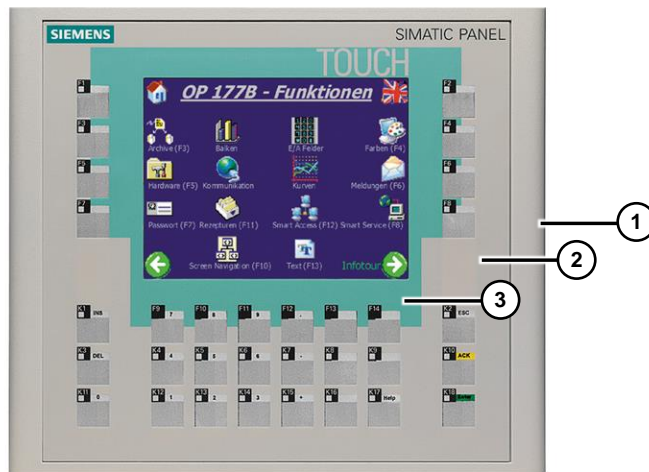
Type	Order no.
OP 73	6AV6641-0A..
OP 77A	6AV6641-0B..
OP 77B	6AV6641-0C..

Examples

Figure 2-11



Figure 2-12



© Siemens AG 2017. All rights reserved

Colors used

Table 2-16

No.	Range	Supplier code no.	Color
1.	Frame	700	Light Basic
2.	Background		
3.	Display	2006	R Pastel Turquoise

2.7.2 170 Series

Type list

Table 2-17

Type	Order no.
TP 170A	6AV6545-0BA..
TP 170B	6AV6545-0BB.. 6AV6545-0BC..
TP 177A	6AV6642-0A..

Type	Order no.
TP 177B	6AV6642-0BC.. 6AV6642-0BA..
OP 170B	6AV6542-0B..
OP 177B	6AV6642-0D..

Colors used

As [2.7.1, Operator Panels / Touch Panels 70 Series](#)

2.7.3 Touch Panels 170 Series 4"

Type list

Table 2-18

Type	Order no.
TP 177B 4"	6AV6642-0BD01-3AX0

Example

Figure 2-13

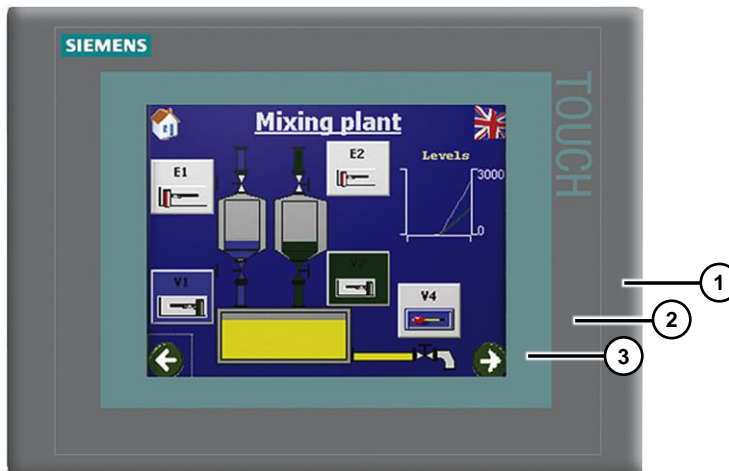
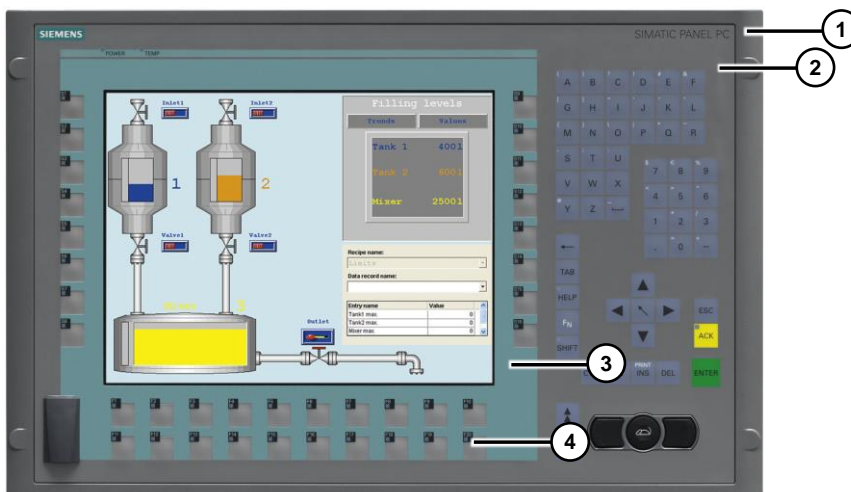


Figure 2-14



Colors used

Table 2-19

No.	Range	Supplier code no.	Color
1.	Frame	2005	R Pearl Dark Grey
2.	Background		
3.	Display	2006	R Pastel Turquoise
4.	Touch panel	2002	Fe-Grey

2.7.4 270 Series**Type list**

Table 2-20

Type	Order no.
TP 270	6AV6545-0C..
OP 270	6AV6542-0C..

Colors usedAs [2.7.1, Operator Panels / Touch Panels 70 Series](#)**2.7.5 277 Series****Type list**

Table 2-21

Type	Order no.
TP 277 6"	6AV6643-0A..
OP 277 6"	6AV6643-0B..

Colors usedAs [2.7.3, Touch Panels 170 Series 4"](#)**2.8 Multi Panels****2.8.1 170 Series****Type list**

Table 2-22

Type	Order no.
MP 177 6" Touch	6AV6642-0E..

Colors usedAs [2.7.3, Touch Panels 170 Series 4"](#)

2.8.2 270 Series**Type list**

Table 2-23

Type	Order no.
MP 270	6AV6542-0A..
MP 270B	6AV6545-0AG.. 6AV6545-0AH..

Colors usedAs [2.7.1, Operator Panels / Touch Panels 70 Series](#)**Colors used**

Table 2-24

No.	Range	Supplier code no.	Color
1.	Frame	700	Light Basic
2.	Background		
3.	Display	2006	R Pastel Turquoise

2.8.3 277 Series**Type list**

Table 2-25

Type	Order no.
MP 277	6AV6643-0C.. 6AV6643-0D..

Colors usedAs [2.7.3, Touch Panels 170 Series 4"](#)**2.8.4 370 Series****Type list**

Table 2-26

Type	Order no.
MP 370	6AV6542-0D.. 6AV6545-0D..

Colors usedAs [2.7.1, Operator Panels / Touch Panels 70 Series](#)**2.8.5 370 Series****Type list**

Table 2-27

Type	Order no.
MP 377	6AV6644-0A..

Type	Order no.
	6AV6644-0B..
MP 377 PRO	6AV6644-2A..

Colors usedAs [2.7.3, Touch Panels 170 Series 4"](#)**2.9 Push Button Panels****Type list**

Table 2-28

Type	Order no.
PP7	6AV3688-3AA03-0AX0
PP17-I	6AV3688-3C.. 6AV3688-4CX02.. 6AV3688-4CX07..
PP17-II	6AV3688-3ED13-0AX0 6AV3688-4E..

Colors usedAs [2.7.1, Operator Panels / Touch Panels 70 Series](#)**2.10 Text Displays****Type list**

Table 2-29

Type	Order no.
TD100C	6ES7272-1BA10-0YA0 6ES7272-1BA10-0YA1
TD200	6ES7272-0AA30-0YA0 6ES7272-0AA30-0YA1
TD200C	6ES7272-1AA10-0YA0 6ES7272-1AA10-0YA1
TD400C	6AV6640-0AA00-0AX0 6AV6640-0AA00-0AX1

Colors usedAs [2.7.1, Operator Panels / Touch Panels 70 Series](#)**2.11 Micro Panels****Type list**

Table 2-30

Type	Order no.
TP 177micro	6AV6640-0CA1..
OP 73micro	6AV6640-0B..

Colors used

As [2.7.1, Operator Panels / Touch Panels 70 Series](#)

3 SIMATIC Industrial PCs

3.1 Rack PCs

3.1.1 IPC 347

Type list

Table 3-1

Type	Order no.
IPC347D	6AG4012-0....-....
IPC347E	6AG4012-1....-....

Example

Figure 3-1



Colors used

Table 3-2

No.	Range	Supplier code no.	Color
1.	Housing	805	Silver grey
2.	Type field	614	Anthracite grey

3.1.2 IPC 547 (except IPC 547G)

Type list

Table 3-3

Type	Order no.
IPC547C	6AG4104-1....-....
IPC547D	6AG4104-2....-....
IPC547E	6AG4104-3....-....

Example

Figure 3-2



Colors used

Table 3-4

No.	Range	Supplier code no.	Color
1.	Housing	805	Silver grey
2.	Type field	2011	Si-Orange

3.1.3 IPC 547G

Type list

Table 3-5

Type	Order no.
IPC547G	6AG4104-4....-....

Example

Figure 3-3



Colors used

Table 3-6

No.	Range	Supplier code no.	Color
1.	Housing	805	Silver grey
2.	Type field	2003	Ti-Grey

3.1.4 IPC 647/847

Type list

Table 3-7

Type	Order no.
Rack PC 647B	6AG4112-0....-....
IPC647C	6AG4112-1....-....
IPC647D	6AG4112-2....-....
IPC847C	6AG4114-1....-....
IPC847D	6AG4114-2....-....
Rack PC 847B	6ES7643-8....-....

Example

Figure 3-4



Colors used

Table 3-8

No.	Range	Supplier code no.	Color
1.	Housing	2005	R Pearl Dark Grey
2.	Type field	2006	R Pastel Turquoise

3.2 Box, Microbox and Nanobox PCs

3.2.1 Box PCs

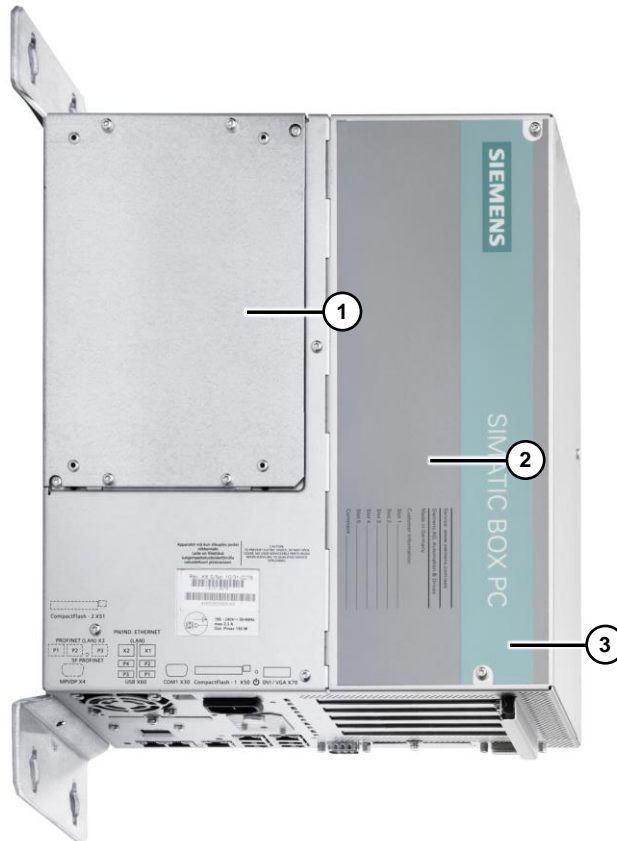
Type list

Table 3-9

Type	Order no.
IPC627D (BOX PC)	6AG4131-2....-....
IPC827D (BOX PC)	6AG4132-2....-....
IPC627C (BOX PC)	6ES7647-6C...-....
BOX PC 827B	6ES7647-6N...-....
IPC827C (BOX PC)	6ES7647-6P...-....

Example

Figure 3-5



Colors used

Table 3-10

No.	Range	Supplier code no.	Color
1.	Housing		untreated ⁴
2.	Background	2005	R Pearl Dark Grey

⁴ Material retains its original color and is not coated.

No.	Range	Supplier code no.	Color
3.	Type field	2006	R Pastel Turquoise

3.2.2 Microbox PCs I

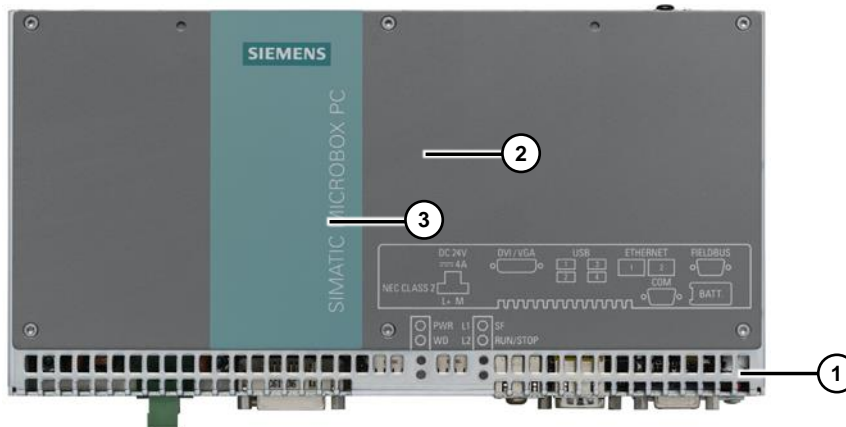
Type list

Table 3-11

Type	Order no.
IPC427C (MICROBOX PC)	6ES7647-7B...-...0

Example

Figure 3-6



Colors used

Table 3-12

No.	Range	Supplier code no.	Color
1.	Housing		untreated ⁵
2.	Background	2005	R Pearl Dark Grey
3.	Type field	2006	R Pastel Turquoise

3.2.3 Microbox PCs II

Type list

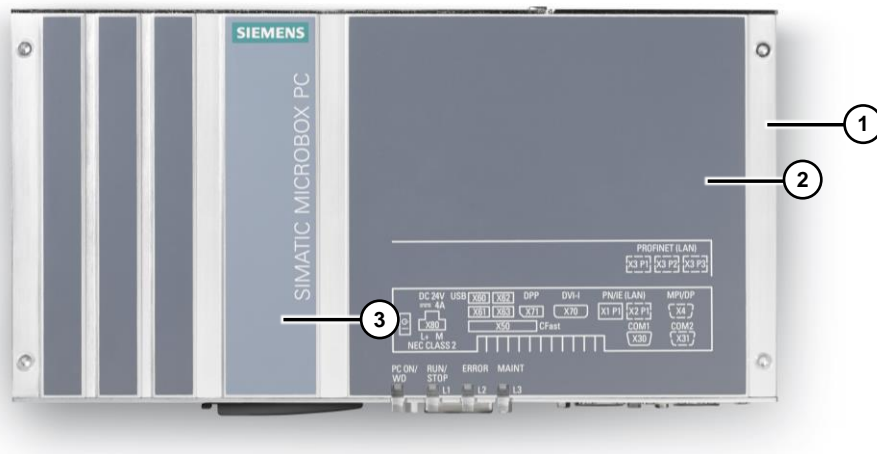
Table 3-13

Type	Order no.
IPC427D (MICROBOX PC)	6AG4140-.....-...0
IPC427D (MICROBOX PC) WITH TPM	6AG4140-.....-...8
IPC427E	6AG4141-.....-....

⁵ Material retains its original color and is not coated.

Example

Figure 3-7



Colors used

Table 3-14

No.	Range	Supplier code no.	Color
1.	Housing		untreated ⁶
2.	Background	2003	Ti-Grey
3.	Type field	2002	Fe-Grey

3.2.4 Nanobox PCs

Type list

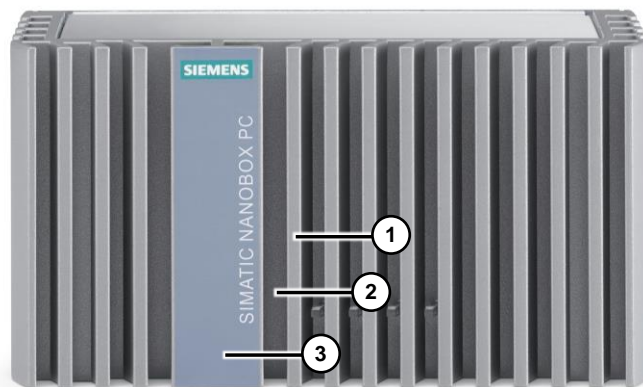
Table 3-15

Type	Order no.
IPC227D (NANOBOX PC)	6ES7647-8A...-....
IPC227E (NANOBOX PC)	6ES7647-8B...-....

⁶ Material retains its original color and is not coated.

Example

Figure 3-8



Colors used

Table 3-16

No.	Range	Supplier code no.	Color
1.	Housing	2005	R Pearl Dark Grey
2.	Background	2005	R Pearl Dark Grey
3.	Type field	2002	Fe-Grey

3.3 Panel PCs

3.3.1 IPC277D/E

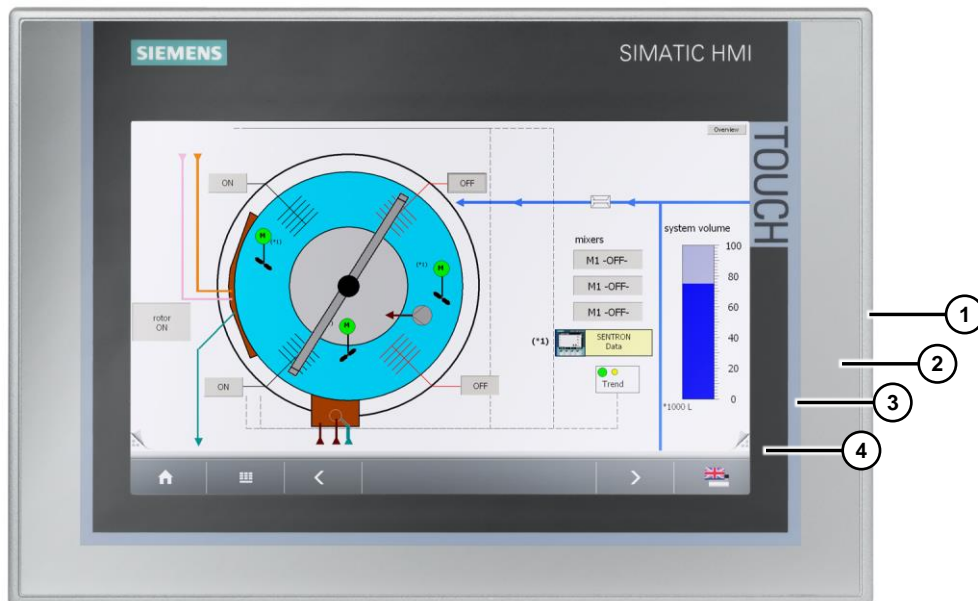
Type list

Table 3-17

Type	Order no.
SIMATIC IPC277D	6AV7881-..
SIMATIC IPC277E	6AV7882-0...0-...0

Examples

Figure 3-9



Colors used

Table 3-18

No.	Range	Supplier code no.	Color
1.	Frame	2005	R Pearl Dark Grey
2.	Outer background		
3.	Inner background	2002	Fe-Grey
4.	Display	804	Black

3.3.2 Panel PC 477 embedded

Type list

Table 3-19

Type	Order no.
Panel PC 477	6AV784.. 6AV785..
Panel PC 477B	6ES7676..
Panel PC 477C	6AV7884-.....-... 1
Panel PC 477D	6AV7240-.....-....

Colors used

As [2.7.3, Touch Panels 170 Series 4"](#)

3.3.3 Panel PC 577**Type list**

Table 3-20

Type	Order no.
Panel PC 577B	6AV783..
Panel PC 577C	6AV7885-.....-....

Colors usedAs [2.7.3, Touch Panels 170 Series 4"](#)**3.3.4 Panel PC 677****Type list**

Table 3-21

Type	Order no.
Panel PC 677B	6AV787..
Panel PC 677C	6AV789-.....-....
Panel PC 677D	6AV7260-.....-....

Colors usedAs [2.7.3, Touch Panels 170 Series 4"](#)**3.3.5 Panel PC 877****Type list**

Table 3-22

Type	Order no.
Panel PC 877	6AV781..

Colors usedAs [2.7.3, Touch Panels 170 Series 4"](#)**3.3.6 SIMATIC Panel PCs with Multi-touch****Type list**

Table 3-23

Type	Order no.
SIMATIC IPC477D Multi-touch 15"	6AV7240-.H...-....
SIMATIC IPC477D Multi-touch 19"	6AV7240-.K...-....
SIMATIC IPC477D Multi-touch 22"	6AV7240-.L...-....
SIMATIC IPC477D PRO Multi-touch 19"	6AV7250-.....-....
SIMATIC IPC677D Multi-touch 15"	6AV7260-3....-....
SIMATIC IPC677D Multi-touch 19"	6AV7260-4....-....
SIMATIC IPC677D Multi-touch 22"	6AV7260-5....-....

Colors used

As [3.4.3, Industrial Flat Panel \(Multi-touch\)](#)

3.4 SIMATIC Industrial Monitors

3.4.1 Flat Panel / SCD Monitors

Type list

Table 3-24

Type	Order no.
Flat Panel	6AV7861..
SCD Monitors (SCD1900)	6AV7862....
SCD monitors	6AV8101-0..

Colors used

As [2.7.3, Touch Panels 170 Series 4"](#)

3.4.2 Industrial Flat Panel (Single Touch or Key Devices)

Type list

Table 3-25

Type	Order no.
Industrial Flat Panel	6AV7863..

Colors used

As [3.3.1, IPC277D/E](#)

3.4.3 Industrial Flat Panel (Multi-touch)

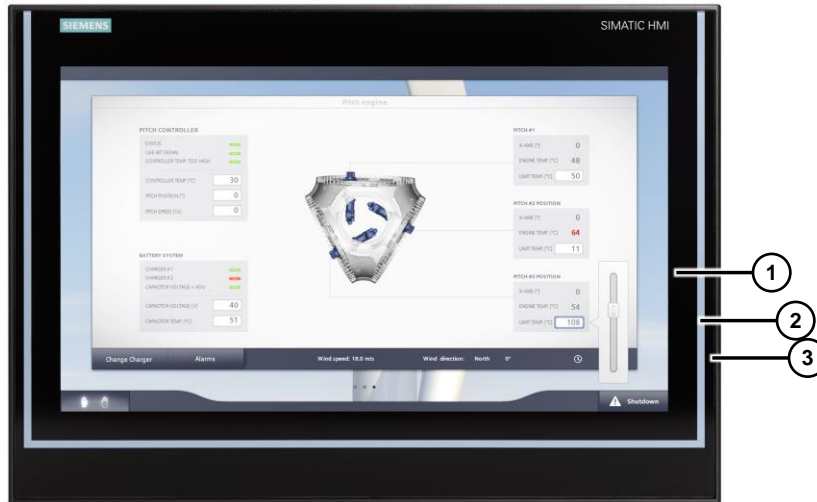
Type list

Table 3-26

Type	Order no.
SIMATIC FLAT PANEL 15" MULTI TOUCH	6AV7863-2MA00-0AA0
SIMATIC FLAT PANEL 15" MULTI TOUCH EXT	6AV7863-2MB10-0AA0
SIMATIC FLAT PANEL 19" MULTI TOUCH	6AV7863-3MA00-0AA0
SIMATIC FLAT PANEL 19" MULTI TOUCH EXT	6AV7863-3MB10-0AA0
SIMATIC FLAT PANEL 22" MULTI TOUCH	6AV7863-4MA00-0AA0
SIMATIC FLAT PANEL 22" MULTI TOUCH EXT	6AV7863-4MB10-0AA0

Example

Figure 3-10



Colors used

Table 3-27

No.	Range	Supplier code no.	Color
1.	Background	2025	Cb-Black
2.	Strip	2003	Ti-Grey
3.	Frame color	2025	Cb-Black

3.5 Thin Clients

3.5.1 SIMATIC Thin Clients

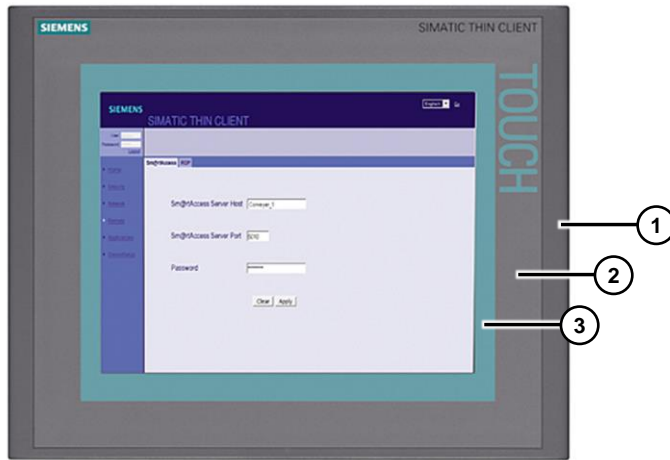
Type list

Table 3-28

Type	Order no.
Thin Client	6AV6646-0A..
Thin Client PRO	6AV6646-2A..

Examples

Figure 3-11



Colors used

Table 3-29

No.	Range	Supplier code no.	Color
1.	Frame	2005	R Pearl Dark Grey
2.	Background		
3.	Display	2006	R Pastel Turquoise
4.	Touch panel	2002	Fe-Grey

3.5.2 Industrial Thin Client

Type list

Table 3-30

Type	Order no.
SIMATIC ITC1200	6AV6646-1AA22-0AX0
SIMATIC ITC1500	6AV6646-1AB22-0AX0
SIMATIC ITC1900	6AV6646-1AC22-0AX0
SIMATIC ITC2200	6AV6646-1AD22-0AX0

Colors used

As [3.3.1, IPC277D/E](#)

4 Special Type Pro Devices

4.1 Comfort Panel Pro

Type list

Table 4-1

Type	Order no.
HMI TP COMFORT INOX	6AV2144-8...-.....

Example

Figure 4-1



Colors used

Table 4-2

No.	Range	Supplier code no.	Color
1.	Frame		untreated ⁷
2.	Outer background	2005	R Pearl Dark Grey
3.	Inner background	804	Black

4.2 Flat Panel Monitors Pro

Type list

Table 4-3

Type	Order no.
SIMATIC IFP PRO 19" MULTI TOUCH	6AV7863-3MA14-0AA0
SIMATIC IFP PRO 19" MT EXT SUPPORT ARM	6AV7863-3MA15-0AA0
SIMATIC FLAT PANEL PRO 15	6AV7861-5TB10-1.A0

⁷ Material retains its original color and is not coated.

4 Special Type Pro Devices

Type	Order no.
SIMATIC FLAT PANEL PRO 19T	6AV7861-6TB10-1.A0

Example

Figure 4-2



Colors used

Table 4-4

No.	Range	Supplier code no.	Color
1.	Frame	805	Silver grey
2.	Background	804	Black

4.3 Thin Client Pro

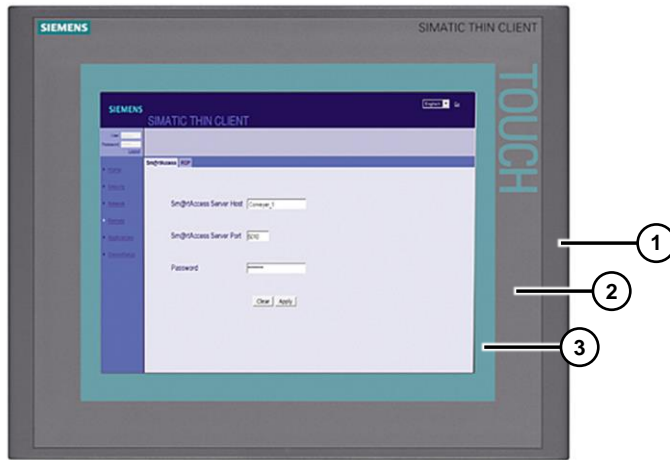
Type list

Table 4-5

Type	Order no.
SIMATIC THIN CLIENT PRO 15" TOUCH	6AV6646-2AB21-2AX0

Example

Figure 4-3



Colors used

Table 4-6

No.	Range	Supplier code no.	Color
1.	Frame	2005	R Pearl Dark Grey
2.	Outer background	2005	R Pearl Dark Grey
3.	Inner background	2006	R Pastel Turquoise