

SIEMENS



Operating Instructions • 03/2015

Compatibility Tool

This document is an entry from the Siemens Industry Online Support. The following Terms of Use apply (www.siemens.com/Terms_of_use).

Security information

Siemens provides products and solutions with industrial security functions that support the secure operation of plants, solutions, machines, equipment and/or networks. They are important components in a holistic industrial security concept. With this in mind, Siemens' products and solutions undergo continuous development. Siemens recommends strongly that you regularly check for product updates.

For the secure operation of Siemens products and solutions, it is necessary to take suitable preventive action (e.g. cell protection concept) and integrate each component into a holistic, state-of-the-art industrial security concept. Third-party products that may be in use should also be considered. For more information about industrial security, visit <http://www.siemens.com/industrialsecurity>.

To stay informed about product updates as they occur, sign up for a product-specific newsletter. For more information, visit <http://support.automation.siemens.com>.

Table of Contents

1	Introduction	3
1.1	Overview	3
1.2	Purpose of the document	3
1.3	Core contents	3
1.4	Calling the tool	4
2	The User Interface	5
3	Operating the Compatibility Tool	8
3.1	General procedure	8
3.2	Downloading a compatibility list	9
3.3	Checking compatibility manually	12
3.3.1	Selecting a main product	12
3.3.2	Selecting additional products	16
3.3.3	Changing the selected software products (optional)	18
3.3.4	Show compatibility	19
3.3.5	Printing compatibility statement (optional)	20
3.3.6	Feedback (optional)	20
3.3.7	Compatibility statements to other products (optional)	21
4	History	22

1 Introduction

1.1 Overview

Due to the wide range of products in the TIA environment with a particular focus on SIMATIC software and hardware products and their respective versions, so far it has not always been easy to check the compatibility of these products. To find an efficient solution for your automation tasks, it is not only the individual product but also the compatibility of the different product versions with each other that are paramount. For you to be able as a user to achieve this goal, it is especially important for us as a provider to support you in this task with the compatibility tool.

The compatibility tool offers you the following advantages:

- Central data storage and uniform display
- Avoidance of contradictory compatibility statements
- Time saving thanks to fast and efficient compatibility query
- Access to complete and uniform compatibility lists

1.2 Purpose of the document

The aim of this document is to explain to you the function and the operation of the compatibility tool and to describe the approach for the compatibility query.

1.3 Core contents

This document looks at the following core contents:

- Description of the user interface
- Description of the range of functions
- The compatibility query from the selection to the result view
- Download of the compatibility lists
- Display of the result page

1.4 Calling the tool

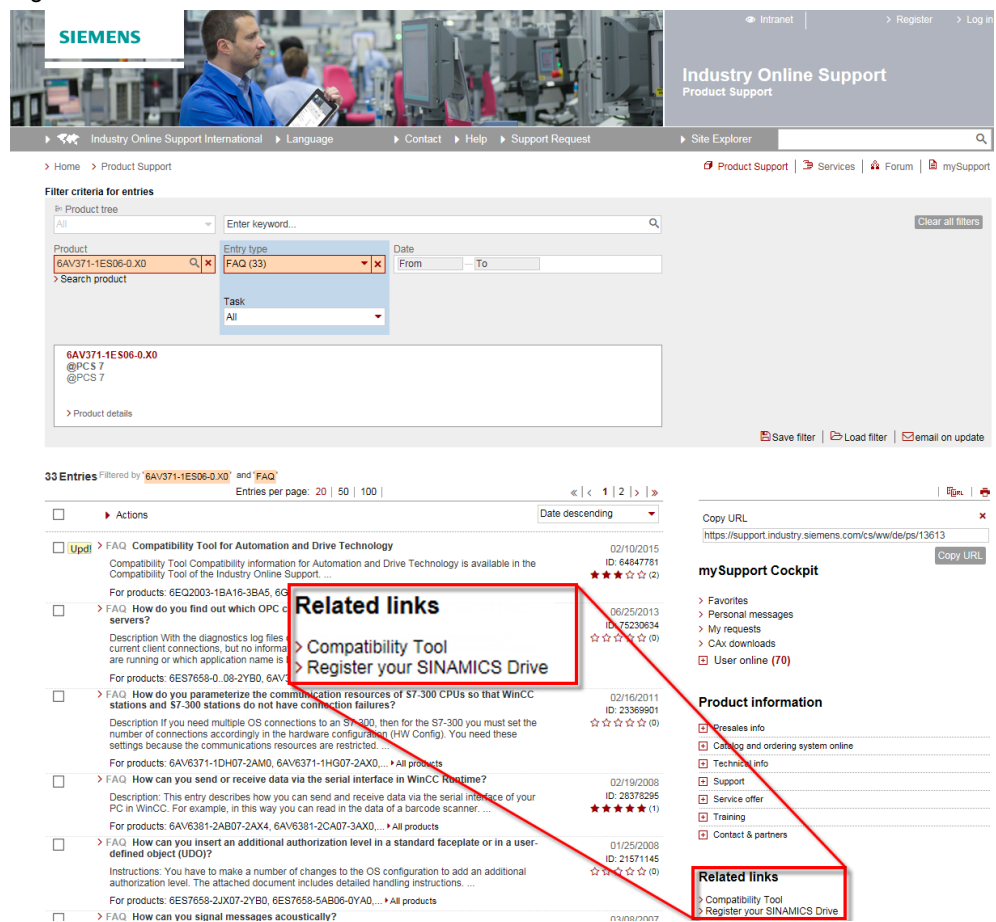
This is how you call the compatibility tool:

- Direct link: <https://www.siemens.com/kompatool>
- FAQ: <http://support.automation.siemens.com/WW/view/en/64847781>
- Related Link in Industry Online Support: <http://support.automation.siemens.com/Product Support>

Note

The Related link to the compatibility tool is only available by any selection in the fields “Product tree” or “Entry type”.

Figure 1-1



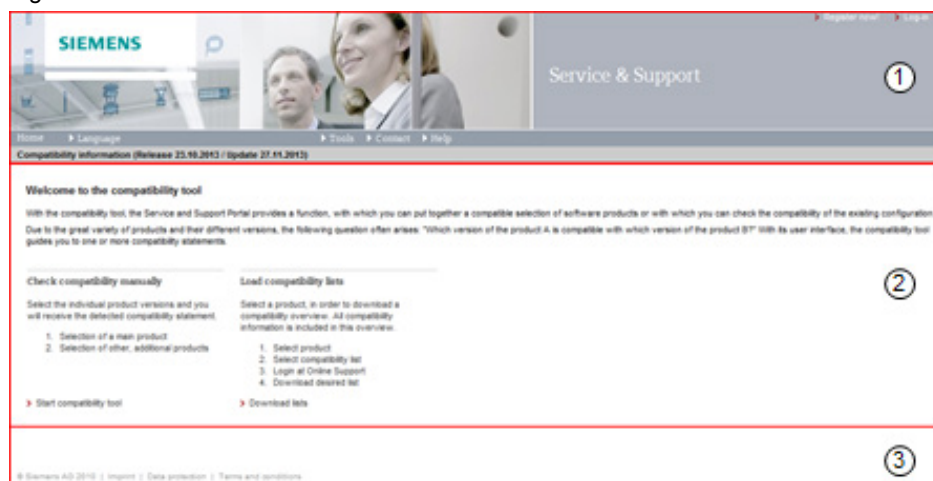
2 The User Interface

This chapter gives you an overview of the structure of the compatibility tool and the general functions of the user interface.

The following figure shows you a welcome screen after calling the compatibility tool. The user interface is divided into the following sections:

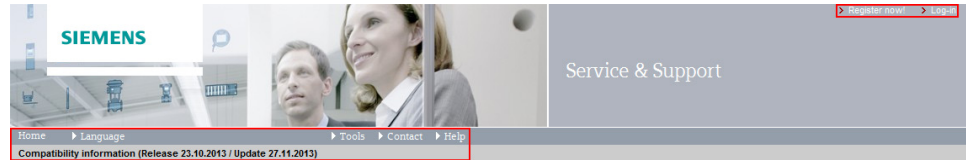
- (1) Navigation
- (2) Work area
- (3) Footnotes

Figure 2-1



Navigation

Figure 2-2



The table below provides an explanation of the functions that are arranged in the header of the user interface.

Table 2-1

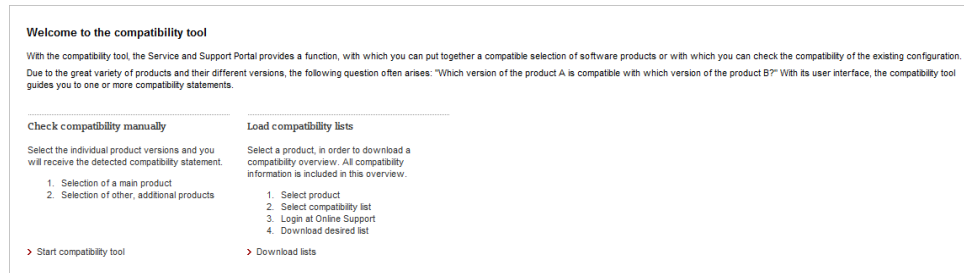
Function	Description/functionality
Home	Via the “home” menu item as primary navigation item you get back to the welcome screen with one click.
Language	You can change the language via the “language” menu item.
Tools	You can download all stored compatibility lists in Excel format in the “tools” section. This function is available to registered users of the Industry Online Support .
Contact	The “contact” menu item opens an overview page with different contact options. Here you will find: <ul style="list-style-type: none"> Worldwide contact person (contact person database) Technical Support (Support Request) Feedback (Webmaster) Siemens Solution Partner Automation (Solution Partner Finder)
Help	Calls the help to the compatibility tool. This is where this operating instruction is stored.
Register now!	Create a profile for the Industry Online Support via the “Register now!” button. Via this registration you not only receive access to the download of compatibility lists but also to further personal functions such as product-specific newsletters, forum and the My Documentation Manager.
Login	With the “Login” button you can log in for Industry Online Support with your login data.

Main area

The middle section of the user interface is your main work area. This area will change in the course of the manual compatibility query. In the welcome screen you can select one of the two main functions:

- Checking compatibility manually
- Load compatibility lists

Figure 2-3



Note

Further information on operating and displaying the results can be found in chapter 3.3 of this document.

Footnotes

In the footnotes you will find general legal notices of the company, consisting of imprint, data protection and terms of use.

3 Operating the Compatibility Tool

3.1 General procedure

In the welcome screen of the compatibility tool you can select between:

- Manual compatibility check of a main product for individual or several other products
- Downloading a compatibility list of a main product

In a compatibility list you can find all the compatible products for a version of a main product that are entered in the database of the tool as well as its service packs and updates. For example, the SIMATIC PCS 7 V8.0 compatibility list includes all the compatibility information of main version V8.0 and respective service packs and updates. How to download a list and what you have to observe can be found in chapter 3.2.

Select a main product first for the manual compatibility check and supplement your selection with various other products from the database of the compatibility tool. This selection made by you is checked for compatibility and the result of this check is displayed for you. More information on operating the manual compatibility check can be found in chapter 3.3.

Note

We recommend to only use the operating functions and buttons of the tool (e.g. home button as primary navigation point) and not to use the control buttons of your browser (e.g. return).

3.2 Downloading a compatibility list

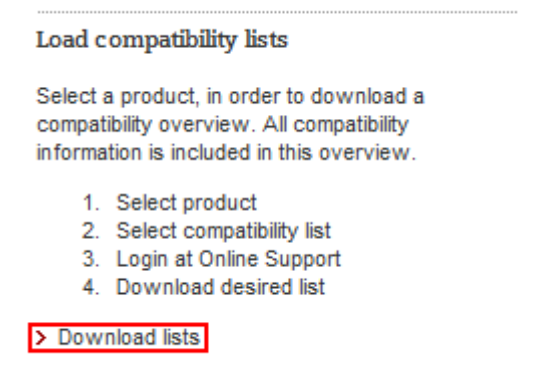
Requirements

- Login for the Siemens Industry Online Support
- Excel 97 or a later version

Approach

1. Click “Download lists”.

Figure 3-1

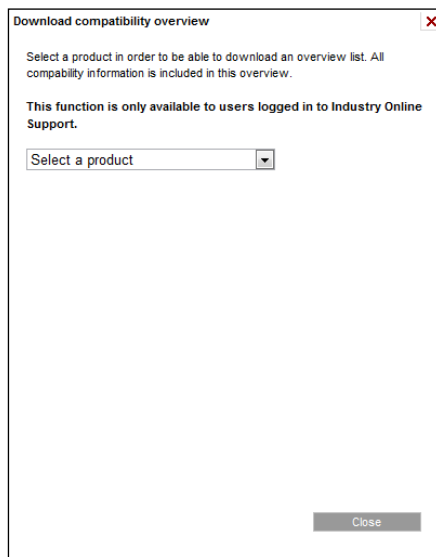


Note

The following steps also apply if you start a list download via the “Tools” button.

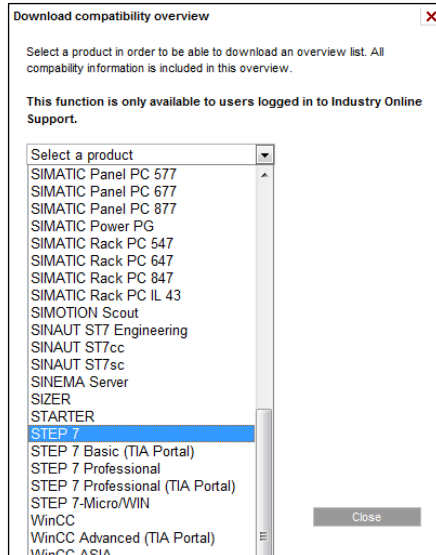
2. The “Download compatibility overview” dialog box opens.

Figure 3-2



3. Select a main product for which you would like to download the compatibility list.

Figure 3-3

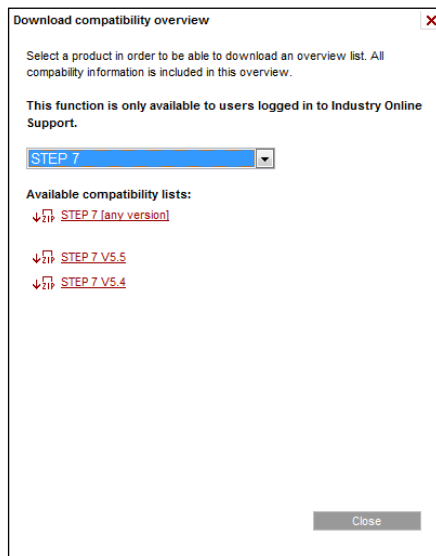


4. Select a specific version from the available compatibility lists or select "Any product version".

Note

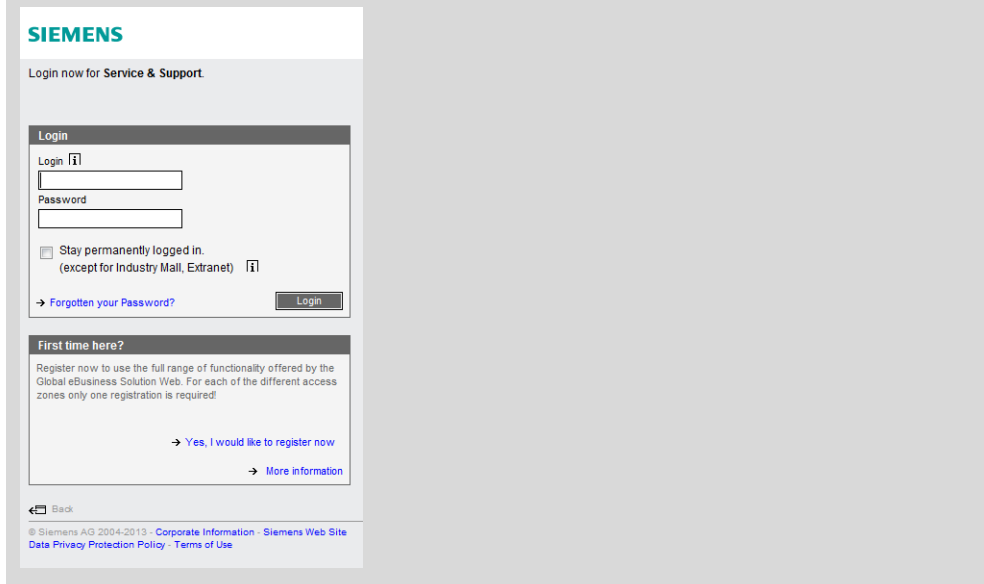
The compatibility lists are downloaded in a zip file. By selecting "Any product version" all available versions are loaded as a packet. In addition to the compatibility lists, there is a PDF file included in the zip file with general notices on the main product. These are valid for all versions of the main product.

Figure 3-4



Note

The download of the compatibility lists is only available to logged in users. In the window below, you can log in or you can register via the “Yes, I would like to register now” link for Industry Online Support.



5. The ZIP archive is downloaded.

Handling the compatibility list

Figure 3-5

Compatibility list for STEP 7 V5.4 (Data status 2013-10-1)		V5.4	V5.4 SP1	V5.4 SP2
Microsoft Windows XP	Professional (32-Bit) SP1	✓	✓	✓
	Professional (32-Bit) SP1a	✓	✓	✓
	Professional (32-Bit) SP2	✓	✓	✓
	Professional (32-Bit) SP3	x	x	x
A&D Data Management ¹⁾	V1.2	✓	✓	✓
	V5.2	✓	✓	✓
	V6.1	✓	✓	✓
Automation License Manager ^{1), 2)}	V2.2	✓	✓	✓

- (1) Versions of the main product
- {2} Products
- (3) Versions of the product
- (4) Product and main product are compatible with each other
- (5) Product and main product are not compatible with each other
- (6) Version of the main product
- (7) Explanation of the footnotes
- (8) Operating system compatibilities for different products

3.3 Checking compatibility manually

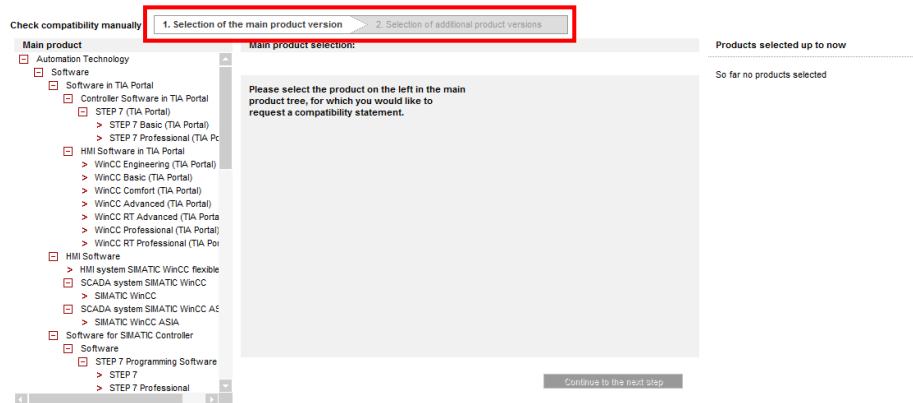
This chapter gives you an instruction for a compatibility query of SIMATIC products, starting at the selection of the product right up to the result view/display. For a compatibility statement of the products compiled by you, follow the instructions one after the other and observe the possible selection criteria when selecting the product. It is important that you select at least one more product to the main product, in order to receive a result view/display. From the result display you can get back to the product selection at any time, remove products from there or add new products.

3.3.1 Selecting a main product

Requirements

- You have selected “Start compatibility tool” on the welcome screen
- The following work area is available to you in the browser.

Figure 3-6

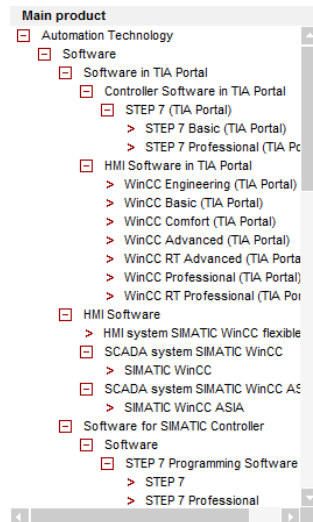


The progress bar “1. Selection of the main product version” is active.

Approach

1. Select a main product from the product tree in the left section of the work area, e.g. SIMATIC PCS 7.

Figure 3-7



Note

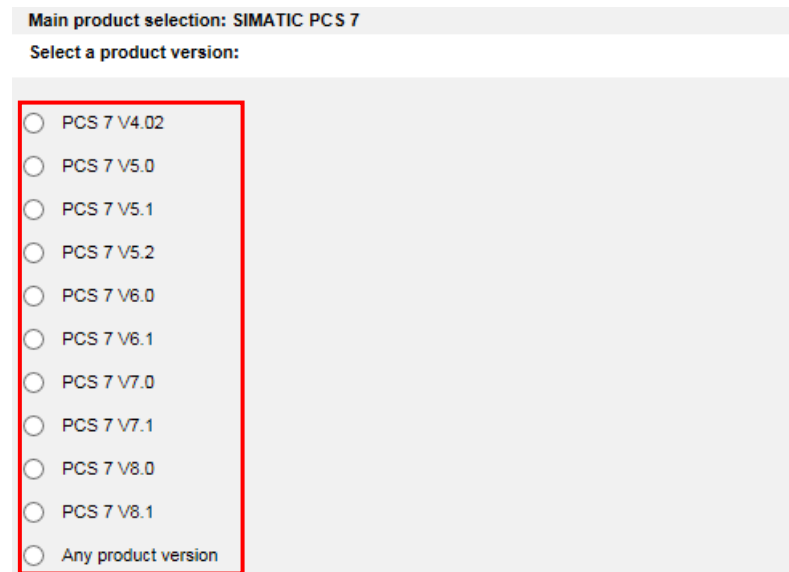
The product tree for this selection is reduced to the main products.

2. Select a version of the main product in the middle section of the work area, e.g. PCS 7 V8.0.

Note

In the left part of the main area you can find the product tree, where you can select between different products. In the middle section you can select the version of the product and in the right section you will receive an overview of your product selection so far. In the following steps, only the middle part will be displayed

Figure 3-8



3. Select a product version, e.g. PCS 7 V8.0 SP1.

Figure 3-9

Main product selection: SIMATIC PCS 7

Select a product version:

- PCS 7 V4.02
- PCS 7 V5.0
- PCS 7 V5.1
- PCS 7 V5.2
- PCS 7 V6.0
- PCS 7 V6.1
- PCS 7 V7.0
- PCS 7 V7.1
- PCS 7 V8.0
- PCS 7 V8.1
- Any product version

Please select a service pack/hotfix:

- PCS 7 V8.0
- PCS 7 V8.0 Upd1
- PCS 7 V8.0 SP1
- PCS 7 V8.0 SP1 Upd1
- PCS 7 V8.0 SP2

Continue to the next step

4. Click the "Continue to the next step" button.

Figure 3-10

Main product selection: SIMATIC PCS 7

Select a product version:

- PCS 7 V4.02
- PCS 7 V5.0
- PCS 7 V5.1
- PCS 7 V5.2
- PCS 7 V6.0
- PCS 7 V6.1
- PCS 7 V7.0
- PCS 7 V7.1
- PCS 7 V8.0
- PCS 7 V8.1
- Any product version

Please select a service pack/hotfix:

- PCS 7 V8.0
- PCS 7 V8.0 Upd1
- PCS 7 V8.0 SP1
- PCS 7 V8.0 SP1 Upd1
- PCS 7 V8.0 SP2

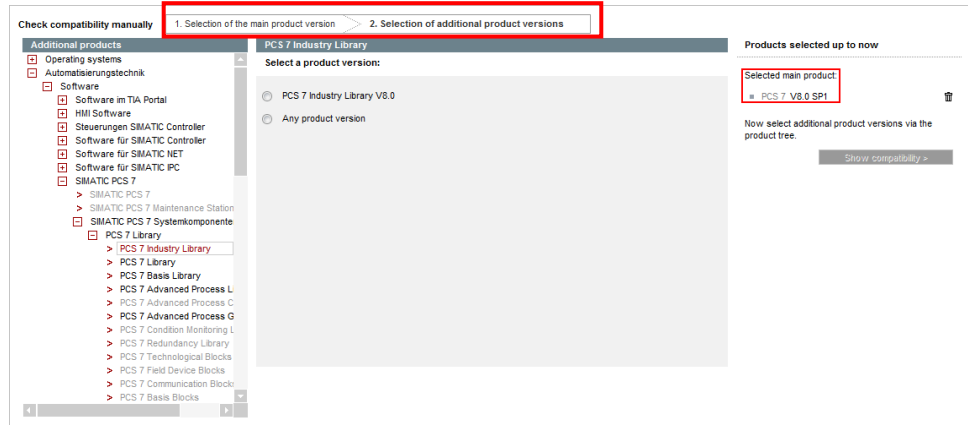
Continue to the next step

Result

You have selected a main version with which you can check the compatibility to other products.

The main product is listed in the right part of the work area.

Figure 3-11



The progress bar “2. Selection of additional product versions” is active.

3.3.2 Selecting additional products

In the following steps you can specify to which product you would like a compatibility statement.

Prerequisite

The “Show compatibility” button (on the right, below the main product) is not yet enabled; you can see this by the grayed box. At this point, pay attention to the “Now select additional product versions via the product tree” message. Only by selecting an additional product is the “Show compatibility” button enabled, the message disappears and a compatibility query can be started.

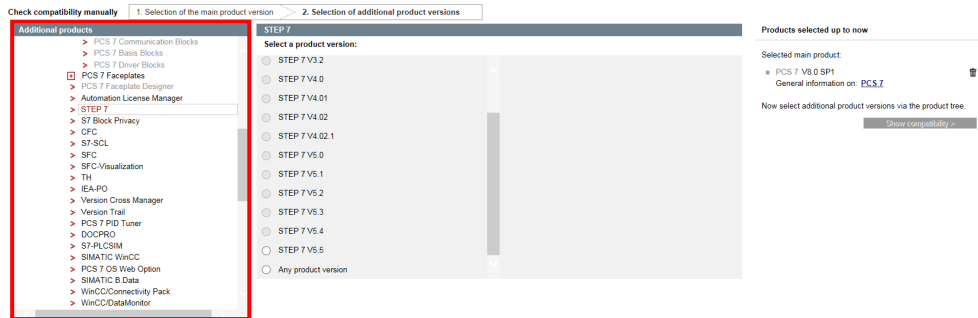
Note

The number of products added to the compatibility statement can be freely selected. Note that with every additional selection, the available products can be restricted.

Approach

1. Select another product from the product tree, for example, STEP 7.

Figure 3-12



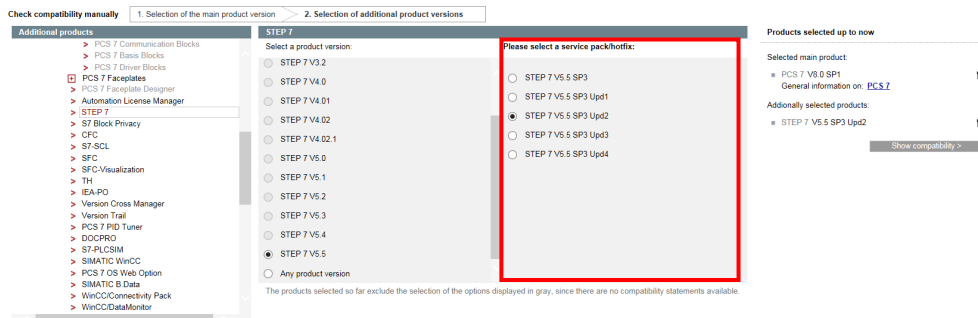
2. Select the product version, e.g. STEP 7 V5.5.

Figure 3-13



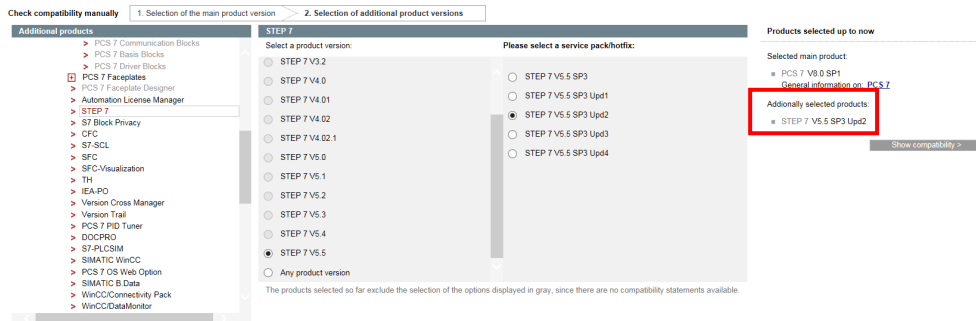
3. Select the actual version, e.g. STEP 7 V5.5 SP3 Upd2.

Figure 3-14



- The selected product is now displayed under the main product in the right column.

Figure 3-15



- Repeat the steps 1 to 4 until all desired products are included in the right column.

Result

You have completed the selection of products for the compatibility query. The result of the compatibility check is displayed via the “Show compatibility >” button (chapter 3.3.4).

3.3.3 Changing the selected software products (optional)

To change the product selection, click the recycle bin icon located on right of the product to be deleted.

Note

If you are deleting the main product from the selection, all additionally selected products are also deleted. You get to the screen in which you can reselect the main product.

3.3.4 Show compatibility

Once you have selected all desired or possible products, you can look at the compatibility statements. Click the “Show compatibility >” button in the right section of the work area, below your product selection.

In the following view, you will be shown the respective compatibility statement. (Here in the example: compatible). Always 2 statements can be shown:

- compatible
- not compatible

Figure 3-16

The screenshot shows a web interface for the compatibility tool. At the top, there are two tables for 'Selected products':

Selected main product	Order number	Comment
PCS 7 V8.0 SP1		

Additionally selected products	Order number	Comment
STEP 7 V5.5 SP3 Upd2		

Below these tables is a 'Compatibility statement' section. It starts with a green checkmark and the word '(compatible)'. The text reads: 'Your selected products are compatible to the selected main product. However, this depends on the operating system version! Please additionally note the information in the documentations of your selected products, as well as the product-specific notes of other software providers. Please also observe the [general notes](#) regarding PCS 7 compatibilities.'

There are three expandable sections for operating systems:

- Microsoft Windows 2000**: Shows 'Microsoft Windows 2000 Professional SP4' with a red 'X' in the 'Comp.' column.
- Microsoft Windows 7**: Shows 'Microsoft Windows 7 Ultimate (32-Bit) SP1' and 'Microsoft Windows 7 Ultimate (64-Bit) SP1', both with green checkmarks in the 'Comp.' column.
- Microsoft Windows Server**: Shows 'Microsoft Windows Server 2003 R2' with a red 'X' in the 'Comp.' column.

If special restrictions or comments are available in connection with the compatibility statement, these comments will also be shown in this screen.

In addition, you will find a link on general notes in the lower section and a list of compatible operating systems of your selected main product.

At the end of the result page, you can also download complete compatibility lists of the main product. These lists or zip files are identical to the lists described in “Downloading compatibility a list” in chapter 3.2.

Figure 3-17

The screenshot shows a section titled 'Other compatibility lists (login at Industry Online Support required):'. Below the title is a list of download links, each preceded by a small folder icon:

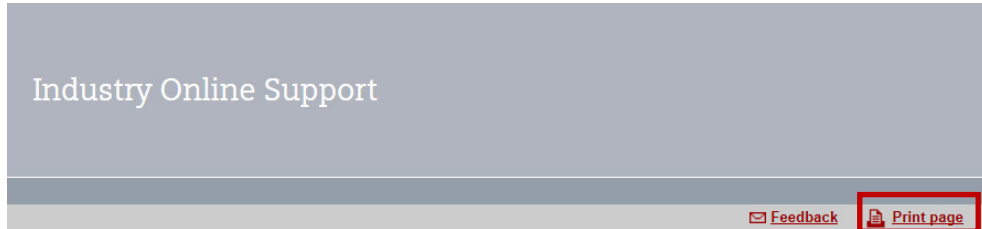
- ↓ PCS 7 V8.1
- ↓ PCS 7 V7.1
- ↓ PCS 7 V7.0
- ↓ PCS 7 V6.1
- ↓ PCS 7 V6.0
- ↓ PCS 7 V5.2
- ↓ PCS 7 V5.1
- ↓ PCS 7 V5.0
- ↓ PCS 7 V4.02

[!] Please note that additional products affect the compatibility. If necessary, select further products in order to achieve a precise compatibility statement.

3.3.5 Printing compatibility statement (optional)

The button with the print icon can be found on the right in the navigation bar. Click the “Print page” button if you want to print your result.

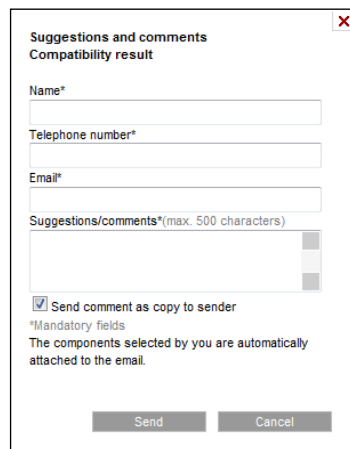
Figure 3-18



3.3.6 Feedback (optional)

The “Feedback” button can be found on the right in the navigation bar next to the “Print page” button (see Figure 3-18). The “Suggestions and comments Compatibility result” dialog box opens up. This is where you can pass on your request for changes to Industry Online Support. The mandatory fields are filled in with your data when you are logged in and when this data was entered when you registered.

Figure 3-19

A screenshot of a dialog box titled 'Suggestions and comments Compatibility result'. The dialog box has a close button (X) in the top right corner. It contains the following fields: 'Name*' (text input), 'Telephone number*' (text input), 'Email*' (text input), and 'Suggestions/comments*(max. 500 characters)' (text area). Below these fields is a checked checkbox labeled 'Send comment as copy to sender'. At the bottom, there are two buttons: 'Send' and 'Cancel'. A note at the bottom states: '*Mandatory fields The components selected by you are automatically attached to the email.'

3.3.7 Compatibility statements to other products (optional)

If you would like to receive compatibility statements to other products, the tool offers you the following two options:

- Keep main product so far: Click the "< Product selection" button. The view for selecting other products will be shown. You can delete products from your selection so far (see chapter 3.3.3) or add other products (see chapter 3.3.2).
- Start a new compatibility query:
Click the "Home" menu item in the navigation bar to start a new query. This will get you back to the welcome screen and you can start a new query.

4 History

Table 4-1

Version	Date	Modifications
V1.0	04.2011	First version
V2.0	12.2013	Extension by description of the user interface, list download and feedback function
V3.0	12.2014	Adjusting the screenshots and updating texts