



Preface	1
----------------	----------

Master Data System	2
---------------------------	----------

Contact Information	3
----------------------------	----------

SIPLUS CMS

SIPLUS CMS4000 X-Tools

User Manual - 02 - Master Data System

English

Release 2011-09

Safety Guidelines

This document contains notices which you should observe to ensure your own personal safety as well as to avoid property damage. The notices referring to your personal safety are highlighted in the manual by a safety alert symbol, notices referring to property damage only have no safety alert symbol



Danger

Indicates an imminently hazardous situation which, if not avoided, will result in death or serious injury.



Warning

Indicates a potentially hazardous situation which, if not avoided, could result in death or serious injury.



Caution

Used with the safety alert symbol indicates a potentially hazardous situation which, if not avoided, may result in minor or moderate injury.

Caution

Used without safety alert symbol indicates a potentially hazardous situation which, if not avoided, may result in property damage.

Notice

Used without the safety alert symbol indicates a potential situation which, if not avoided, may result in an undesirable result or state.

When several danger levels apply, the notices of the highest level (lower number) are always displayed. If a notice refers to personal damages with the safety alert symbol, then another notice may be added warning of property damage.

Qualified Personnel

The device/system may only be set up and operated in conjunction with this documentation. Only qualified personnel should be allowed to install and work on the equipment. Qualified persons are defined as persons who are authorized to commission, to earth, and to tag circuits, equipment and systems in accordance with established safety practices and standards.

Intended Use

Please note the following:



Warning

This device and its components may only be used for the applications described in the catalog or technical description, and only in connection with devices or components from other manufacturers approved or recommended by Siemens. This product can only function correctly and safely if it is transported, stored, set up and installed correctly, and operated and maintained as recommended.

Trademarks

All designations marked with ® are registered trademarks of Siemens AG. Other designations in this documentation might be trademarks which, if used by third parties for their purposes, might infringe upon the rights of the proprietors.

Copyright Siemens AG 2011. All rights reserved.

Reproduction, transmission or use of this document or its contents is not permitted without express written authority. Offenders will be liable for damages. All rights, including rights created by patent grant or registration of a utility model or design, are reserved.

Disclaimer of Liability

We have checked the contents of this document for agreement with the hardware and software described. Since deviations cannot be precluded entirely, we cannot guarantee full agreement. However, the data in the manual are reviewed regularly, and any necessary corrections will be included in subsequent editions. Suggestions for improvement are welcomed.

Table of Contents

1	Preface	5
1.1	Purpose of this Document.....	5
1.2	Validity of this Document.....	5
1.3	Audience	5
1.4	Notations	6
2	Master Data System.....	7
2.1	Master Data System Explorer	7
2.1.1	Overview	7
2.1.2	Main Branch	8
2.1.3	Servers Branch	8
2.1.4	Server Branch	8
2.1.5	Online Data Branch.....	8
2.1.6	Offline Data Branch.....	9
2.1.7	Advanced Store Dialog	10
2.1.7.1	Overview	10
2.1.7.2	Storing Parameters Table.....	11
2.1.8	Advanced Export Dialog	12
2.1.8.1	Overview	12
2.1.8.2	Exporting Parameters Table.....	12
3	Contact Information	15

Table of Figures

<i>Figure 1: Example of a MDS Explorer</i>	7
<i>Figure 2: Storage Progress Dialog</i>	9
<i>Figure 3: Export Progress Dialog</i>	10
<i>Figure 4: Example of an Advanced Store Dialog</i>	10
<i>Figure 5: Example of an Advanced Export Dialog</i>	12

1 Preface

1.1 Purpose of this Document

This document provides detailed information about the functionalities and usage of the software

- SIPLUS CMS4000 X-Tools

of the SIPLUS CMS product line.

In addition to the detailed information about each dialog and functionality of the **Master Data System** which is found within this document, also the following documentation is available:

- SIPLUS CMS4000 X-Tools - User Manual - 01 - Introduction
 - provides an introduction into the basic functionalities of SIPLUS CMS4000 **X-Tools**
- SIPLUS CMS4000 X-Tools - User Manual - 03 - Main Management System
 - provides detailed information about the functionality which is provided by the **Main Management System**
- SIPLUS CMS4000 X-Tools - User Manual - 04 - Device Management System
 - provides detailed information about the functionality which is provided by the **Device Management System**
- SIPLUS CMS4000 X-Tools - User Manual - 05 - Monitoring System
 - provides detailed information about the functionality which is provided by the **Monitoring System**
- SIPLUS CMS4000 X-Tools - User Manual - 06 - Analyzing System
 - provides detailed information about the functionality which is provided by the **Analyzing System**
- SIPLUS CMS4000 X-Tools - User Manual - 07 - Storage System
 - provides detailed information about the functionality which is provided by the **Storage System**
- SIPLUS CMS4000 X-Tools - Release Notes
 - provides additional information about the released version of SIPLUS CMS4000 **X-Tools**
- SIPLUS CMS4000 X-Tools - Change Log
 - provides an overview about the changes which have been introduced with the current version of SIPLUS CMS4000 **X-Tools**

1.2 Validity of this Document

This document is valid for the following software:

- SIPLUS CMS4000 X-Tools Demo V 03.04
- SIPLUS CMS4000 X-Tools Standard V 03.04
- SIPLUS CMS4000 X-Tools Professional V 03.04

During the following pages, these software packages will be referred to by the term **X-Tools**.

1.3 Audience

This document is intended for personnel involved in the commissioning and using of the software:

- **X-Tools**

1.4 Notations

The following notations are used within this document:

- ***bold, italic*** text is being used for the main executables of ***X-Tools***
 - examples: ***X-Tools Client, X-Tools Server***
- **bold** text is being used for the software modules of ***X-Tools***
 - examples: **Main Management System, Device Profile Editor, IPE Socket T001**
- **green** text is being used for controls like tables and trees
 - examples: **Main Profile Settings** table, **Device Profile Data** table
- **orange** text is being used for simple controls like a menu button, a single row/column/cell of a table or a branch of a tree
 - examples: **Open...** menu button, **IP Address** column, **Target Device Name** cell, **Interfaces Branch**
- **dark yellow** text is being used for the entries of context menus
 - examples: **Advanced Append...**, **Edit**
- Camel Notation is being used for major terms of ***X-Tools***
 - examples: Main Profile, Interface Profile, User Accounts File, Analyzing Function
- < and > brackets are being used for keyboard keys
 - examples: <Ctrl>, <Alt>, <Shift>,
- [and] brackets are being used for mouse operations
 - examples: [left mouse button down], [mouse move]

2 Master Data System

2.1 Master Data System Explorer

2.1.1 Overview

The **Master Data System Explorer** (in the following, the **MDS Explorer**) is used in order to visualize and maintain all of the currently available data from all of the currently connected **X-Tools Servers**. It is displayed as a tree which contains all of the relevant and available **MDS Explorer** items. Via Drag&Drop the user is able to move items within the **MDS Explorer** and from the **MDS Explorer** to other parts of the **X-Tools Client**. The following lines provide a short overview about the information that is available from the **MDS Explorer**.

The following screenshot shows an example of a **MDS Explorer**:

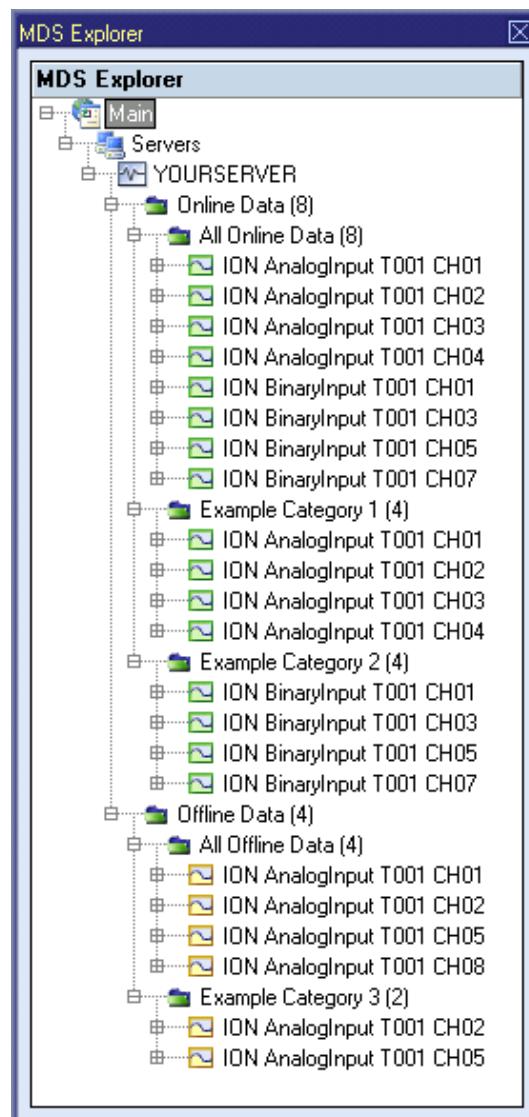


Figure 1: Example of a MDS Explorer

Each branch of the **MDS Explorer** has a defined task and provides certain functionalities. The following major branches are provided by the **MDS Explorer**:

- Main Branch
- Servers Branch
- Server Branch
- Online Data Branch
- Offline Data Branch
- Advanced Store Dialog
- Advanced Export Dialog

2.1.2 Main Branch

The one and only **Main Branch** provides all of the other items of the **MDS Explorer**. It can be expanded and collapsed in order to show or hide its sub-items.

2.1.3 Servers Branch

The one and only **Servers Branch** provides all of the **X-Tools Servers** which are connected at the moment. The tree of shown **X-Tools Servers** is updated automatically whenever a server is attached or detached.

2.1.4 Server Branch

Each **Server Branch** represents one of the currently connected **X-Tools Servers**.

2.1.5 Online Data Branch

Each **Online Data Branch** provides all of the online data which is currently available at its parent **X-Tools Server**.

Via the context menu of the **Online Data Branch** and its sub-branches, online data categories can be created, edited and removed. In addition, online data can be dragged from the **All Online Data Branch** to any of the created online data categories in order to create a customized view onto the currently present online data.

The currently available online data can be dragged from the **MDS Explorer** into the other systems of **X-Tools** in order to use them there. In case an online data category is being dragged into another system of **X-Tools** the system behaves as if all of the contained online data would be dragged.

The **Online Data Branch** and each of its sub-branches shows the total number of its below online data. As online data can be grouped within categories and as each online data may be present in multiple categories simultaneously, the counted number of data all sub-branches of a branch can sum up to more than the counted number of data of the parent branch. This is caused by the fact that each branch counts each unique online data only once, no matter in how many sub-categories it is present.

The following specific context menu items are provided:

Context Menu Item	Description
Cut	cuts the currently selected items
Copy	copies the currently selected items
Paste	pastes the currently selected items
Remove	removes the currently selected items
Rename	allows to rename the selected item directly within the MDS Explorer
New Category...	opens the Add Category dialog and creates a new category afterwards

2.1.6 Offline Data Branch

Each **Offline Data Branch** provides all of the offline data which is currently available at its parent **X-Tools Server**.

Via the context menu of the **Offline Data Branch** and its sub-branches, offline data categories can be created, edited and removed. In addition, offline data can be dragged from the **All Offline Data Branch** to any of the created offline data categories in order to create a customized view onto the currently present offline data.

The currently available offline data can be dragged from the **MDS Explorer** into the other systems of **X-Tools** in order to use them there. In case an offline data category is being dragged into another system of **X-Tools** the system behaves as if all of the contained offline data would be dragged.

The **Offline Data Branch** and each of its sub-branches shows the total number of its below offline data. As offline data can be grouped within categories and as each offline data may be present in multiple categories simultaneously, the counted number of data all sub-branches of a branch can sum up to more than the counted number of data of the parent branch. This is caused by the fact that each branch counts each unique offline data only once, no matter in how many sub-categories it is present.

The following specific context menu items are provided:

Context Menu Item	Description
Cut	cuts the currently selected items
Copy	copies the currently selected items
Paste	pastes the currently selected items
Remove	removes the currently selected items
Rename	allows to rename the selected item directly within the MDS Explorer
New Category...	opens the Add Category dialog and creates a new category afterwards
Store	stores the currently selected items and their sub-items using the default configuration for the storage process
Export	exports the currently selected items and their sub-items using the default configuration for the export process
Advanced Store...	opens the Advanced Store dialog and stores the selected items and their sub-items according to the chosen options afterwards
Advanced Export...	opens the Advanced Export dialog and exports the selected items and their sub-items according to the chosen options afterwards

Store

The used configuration for the storage process matches the default configuration which is being used by the **Advanced Store** dialog.

While the storing of the offline data is going on, the **Storage Progress** dialog is being displayed. The **Cancel** button can be used in order to cancel the ongoing storage operation.

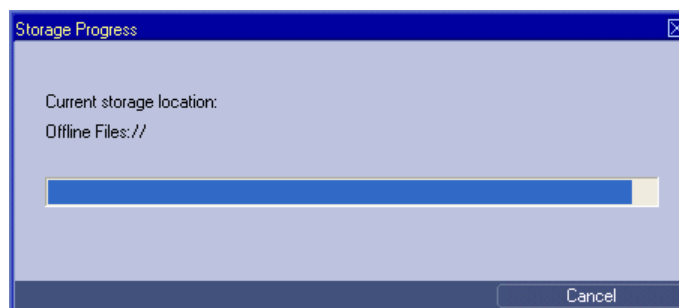


Figure 2: **Storage Progress Dialog**

Export

The default configuration for the export process matches the default configuration of the **Advanced Export** dialog.

While the exporting of the offline data is going on, the **Export Progress** dialog is being displayed. The **Cancel** button can be used in order to cancel the ongoing export operation.

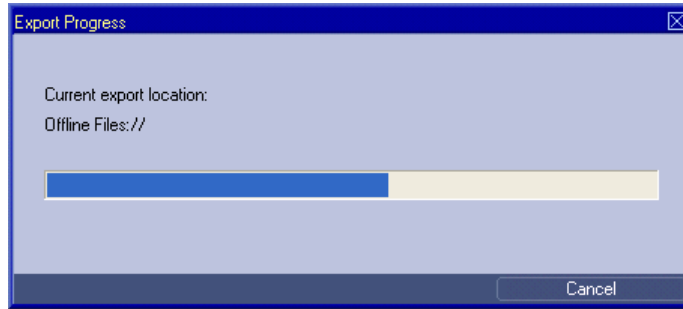


Figure 3: *Export Progress Dialog*

2.1.7 Advanced Store Dialog

2.1.7.1 Overview

The following screenshot shows an example of an **Advanced Store** dialog:

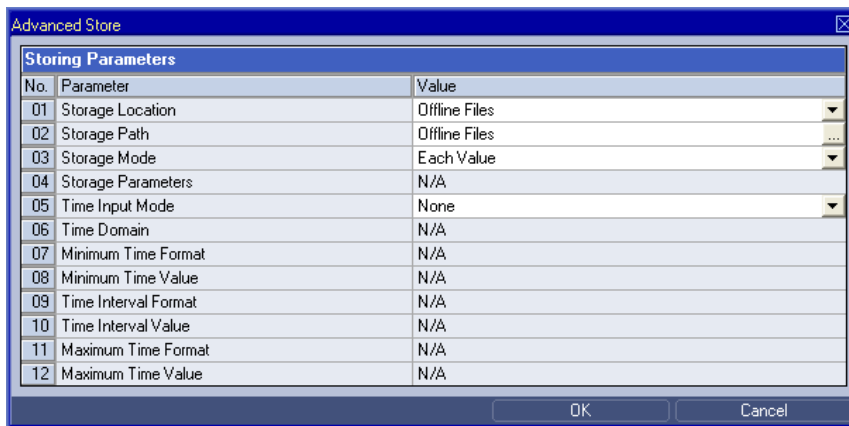


Figure 4: *Example of an Advanced Store Dialog*

2.1.7.2 Storing Parameters Table

The **Storing Parameters** table contains the parameters which shall be applied when the selected items and their sub-items are being stored:

Parameter	Description
Storage Location	allows to switch between the already defined storage locations and to define additional storage locations
Storage Path	allows to choose the desired path below the specified storage location
Storage Mode	contains the storage mode which shall be applied
Storage Parameters	contains the storage parameters which shall be applied
Time Input Mode	allows to switch between the available time input modes
Time Domain	allows to switch between the available time domains
Minimum Time Format	allows to switch between the available input formats for the minimum time
Minimum Time Value	allows to enter the minimum time of the data which shall be loaded
Time Interval Format	allows to switch between the available input formats of the time interval
Time Interval Value	allows to enter the time interval of the data which shall be loaded
Maximum Time Format	allows to switch between the available input formats for the maximum time
Maximum Time Value	allows to enter the maximum time of the data which shall be loaded

Storage Mode

Storage Mode	Description
Each Value	In this storage mode, each value from the data buffer is being stored.
Changes only	In this storage mode, a value from the data buffer is being stored only in case the difference between the value from the data buffer and the last value which has been stored is bigger than the specified hysteresis.
Changes and Interval	In this storage mode, a value from the data buffer is being stored in case the difference between the value from the data buffer and the last value which has been stored is bigger than the specified hysteresis. In addition, the last known value from the data buffer is being stored each amount of time which is specified as interval.
Interval only	In this storage mode, a value from the data buffer never is being stored directly. Instead, the last known value from the data buffer is being stored each amount of time which is specified as interval.

Storage Parameter

Storage Parameter	Description
N/A	This storage parameter is relevant for the storage mode Each Value only and is being applied automatically in case this storage mode is being chosen.
Hysteresis	This storage parameter allows specifying via edit box the hysteresis for to be stored values and is being applied automatically in case the storage mode Changes Only is being chosen.
Hysteresis and Interval	These storage parameters allow to specify via edit box the hysteresis and the amount of time for the to be stored values and are being applied automatically in case the storage mode Changes and Interval is being chosen.
Interval	This storage parameter allows specifying via edit box the amount of the time for to be stored values and is being applied automatically in case the storage mode Interval Only is being chosen.

Time Input Mode

Time Input Mode	Description
None	In this time input mode, the full available time interval of the selected offline data is being stored.
Minimum Time and Time Interval	In this time input mode, the time interval which is specified via the Minimum Time Value and Time Interval Value parameters is being stored.
Minimum Time and Maximum Time	In this time input mode, the time interval which is specified via the Minimum Time Value and Maximum Time Value parameters is being stored.
Time Interval and Maximum Time	In this time input mode, the time interval which is specified via the Time Interval Value and Maximum Time Value parameters is being stored.

Time Domain

Time Domain	Description
Absolute Times	When the time domain is set to "Absolute Times", the Minimum Time Value and Maximum Time Value rows expect the user input as absolute times.
Relative Times	When the time domain is set to "Relative Times", the Minimum Time Value and Maximum Time Value rows expect the user input as relative times.

2.1.8 Advanced Export Dialog

2.1.8.1 Overview

The following screenshot shows an example of an **Advanced Export** dialog:

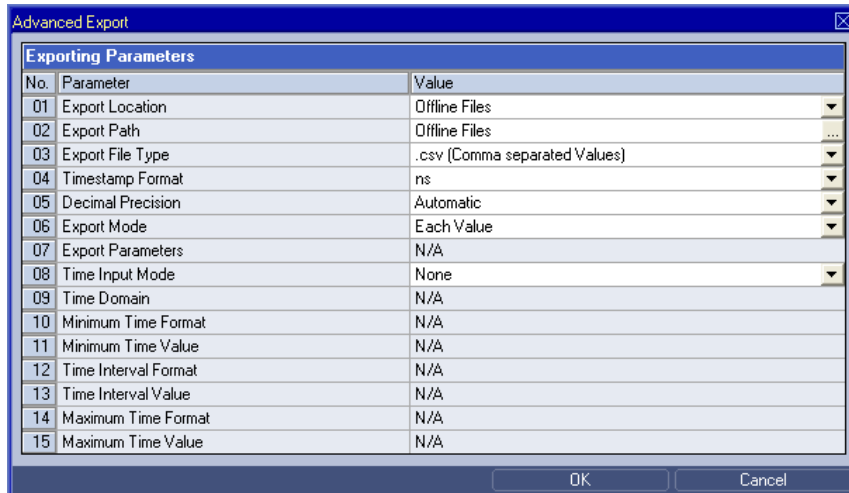


Figure 5: Example of an **Advanced Export** Dialog

2.1.8.2 Exporting Parameters Table

The **Exporting Parameters** table contains the parameters which shall be applied when the selected items and their sub-items are being exported:

Parameter	Description
Export Location	allows to switch between the already defined storage locations and to define additional storage locations
Export Path	allows to choose the desired path below the specified storage location
Export File Type	allows to switch between the available export file types
Timestamp Format	allows to switch between the available timestamp formats
Decimal Precision	allows to switch between the available decimal precisions
Export Mode	contains the export mode which shall be applied
Export Parameters	contains the export parameters which shall be applied
Time Input Mode	allows to switch between the available time input modes
Time Domain	allows to switch between the available time domains
Minimum Time Format	allows to switch between the available input formats for the minimum time
Minimum Time Value	allows to enter the minimum time of the data which shall be loaded
Time Interval Format	allows to switch between the available input formats of the time interval
Time Interval Value	allows to enter the time interval of the data which shall be loaded
Maximum Time Format	allows to switch between the available input formats for the maximum time
Maximum Time Value	allows to enter the maximum time of the data which shall be loaded

Export Location

The desired export location for the data can be chosen by selecting of an already defined storage location via the provided combo box, which contains the symbolic names of all of the currently known root data locations of the source **X-Tools Server** of the selected data.

The last entry of the combo box is “...” and opens the **Add Location** dialog when it is being chosen. When a new storage location has been defined via the **Add Location** dialog, it is added to the **Export Location** combo box automatically and automatically becomes the currently selected one.

Export Path

The **Export Path** contains the name of the used location as well as the following path of directories.

Export File Type

Export File Type	Description
.csv (Comma separated Values)	When the export file type is set to “.csv (Comma separated Values)”, the selected items and their sub-items are being exported to .csv compatible files.
.dat (DIAdem Data Format)	When the export file type is set to “.dat (DIAdem Data Format)”, the selected offline data are being exported to .dat compatible files.

Timestamp Format

Timestamp Format	Description
ns	When the timestamp format is set to “ns”, timestamps are written into the exported file as ns since 1970-01-01 00:00:00 GMT (in case of absolute timestamps) or as ns since 000000 00:00:00 (in case of relative timestamps).
Date + Time + ns (GMT)	When the timestamp format is set to “Date + Time + ns (GMT)”, timestamps are written into the exported file as date, time and ns in GMT (in case of absolute timestamps) or as time and ns (in case of relative timestamps).
Date + Time + ns (Local Time)	When the timestamp format is set to “Date + Time + ns (Local Time)”, timestamps are written into the exported file as date, time and ns in local time (in case of absolute timestamps) or as time and ns (in case of relative timestamps).

Decimal Precision

Decimal Precision	Description
Automatic	When the decimal precision is set to “Automatic”, decimal values are written into the exported file with the maximal available accuracy of each value. Thus, the number of digits after the comma can vary in between the values within one line and in between the values of one data from line to line.
0, 3, 6, 9 or 12	When the decimal precision is set to “0”, “3”, “6”, “9” or “12”, decimal values are written into the exported file with the specified number of digits.

Export Mode

Export Mode	Description
Each Value	In this export mode, each value from the data buffer is being exported.
Changes only	In this export mode, a value from the data buffer is being exported only in case the difference between the value from the data buffer and the last value which has been exported is bigger than the specified hysteresis.
Changes and Interval	In this export mode, a value from the data buffer is being exported in case the difference between the value from the data buffer and the last value which has been exported is bigger than the specified hysteresis. In addition, the last known value from the data buffer is being exported each amount of time which is specified as interval.
Interval only	In this export mode, a value from the data buffer never is being exported directly. Instead, the last known value from the data buffer is being exported each amount of time which is specified as interval.

Export Parameter

Export Parameter	Description
N/A	This export parameter is relevant for the storage mode Each Value only and is being applied automatically in case this storage mode is being chosen.
Hysteresis	This export parameter allows specifying via edit box the hysteresis for to be stored values and is being applied automatically in case the storage mode Changes Only is being chosen.
Hysteresis and Interval	These export parameters allow to specify via edit box the hysteresis and the amount of time for the to be stored values and are being applied automatically in case the storage mode Changes and Interval is being chosen.
Interval	This export parameter allows specifying via edit box the amount of the time for to be stored values and is being applied automatically in case the storage mode Interval Only is being chosen.

Time Input Mode

Time Input Mode	Description
None	In this time input mode, the full available time interval of the selected offline data is being exported.
Minimum Time and Time Interval	In this time input mode, the time interval which is specified via the Minimum Time Value and Time Interval Value parameters is being exported.
Minimum Time and Maximum Time	In this time input mode, the time interval which is specified via the Minimum Time Value and Maximum Time Value parameters is being exported.
Time Interval and Maximum Time	In this time input mode, the time interval which is specified via the Time Interval Value and Maximum Time Value parameters is being exported.

Time Domain

Time Domain	Description
Absolute Times	When the time domain is set to "Absolute Times", the Minimum Time Value and Maximum Time Value rows expect the user input as absolute times.
Relative Times	When the time domain is set to "Relative Times", the Minimum Time Value and Maximum Time Value rows expect the user input as relative times.

3 Contact Information

Address

Siemens AG
I IA CE SE
Wuerzburger Strasse 121
90766 Fuerth
Germany

Internet

<http://www.siemens.com/siplus-cms>