



Preface	1
Storage System	2
Contact Information	3

SIPLUS CMS

SIPLUS CMS X-Tools
User Manual - 07 - Storage System

English
Release 2012-09

Safety Guidelines

This document contains notices which you should observe to ensure your own personal safety as well as to avoid property damage. The notices referring to your personal safety are highlighted in the manual by a safety alert symbol, notices referring to property damage only have no safety alert symbol



Danger

Indicates an imminently hazardous situation which, if not avoided, will result in death or serious injury.



Warning

Indicates a potentially hazardous situation which, if not avoided, could result in death or serious injury.



Caution

Used with the safety alert symbol indicates a potentially hazardous situation which, if not avoided, may result in minor or moderate injury.

Notice

Used without the safety alert symbol indicates a potential situation which, if not avoided, may result in an undesirable result or state.

When several danger levels apply, the notices of the highest level (lower number) are always displayed. If a notice refers to personal damages with the safety alert symbol, then another notice may be added warning of property damage.

Qualified Personnel

The device/system may only be set up and operated in conjunction with this documentation. Only qualified personnel should be allowed to install and work on the equipment. Qualified persons are defined as persons who are authorized to commission, to earth, and to tag circuits, equipment and systems in accordance with established safety practices and standards.

Intended Use

Please note the following:



Warning

This device and its components may only be used for the applications described in the catalog or technical description, and only in connection with devices or components from other manufacturers approved or recommended by Siemens. This product can only function correctly and safely if it is transported, stored, set up and installed correctly, and operated and maintained as recommended.

Trademarks

All designations marked with ® are registered trademarks of Siemens AG. Other designations in this documentation might be trademarks which, if used by third parties for their purposes, might infringe upon the rights of the proprietors.

Copyright Siemens AG 2012. All rights reserved.

Reproduction, transmission or use of this document or its contents is not permitted without express written authority. Offenders will be liable for damages. All rights, including rights created by patent grant or registration of a utility model or design, are reserved.

Disclaimer of Liability

We have checked the contents of this document for agreement with the hardware and software described. Since deviations cannot be precluded entirely, we cannot guarantee full agreement. However, the data in the manual are reviewed regularly, and any necessary corrections will be included in subsequent editions. Suggestions for improvement are welcomed.

Table of Contents

1	Preface	7
1.1	Purpose of this Document.....	7
1.2	Validity of this Document.....	7
1.3	Audience	7
1.4	Notations	8
2	Storage System.....	9
2.1	Storage System Explorer	9
2.1.1	Overview	9
2.1.2	Main Branch	10
2.1.3	Editors Branch.....	10
2.1.4	Storage Profile Editors Branch.....	10
2.1.5	Storage Profile Editor Branch	10
2.1.6	Loading Profile Editors Branch	11
2.1.7	Loading Profile Editor Branch	11
2.1.8	Offline Data Loaders Branch.....	11
2.1.9	Offline Data Loader Branch	11
2.1.10	Servers Branch	11
2.1.11	Server Branch	11
2.1.12	Files Branch	11
2.1.13	File Location Branch	12
2.1.14	Storage Profile Files Branch	12
2.1.15	Loading Profile Files Branch.....	13
2.1.16	Libraries Branch.....	13
2.1.17	Storage Process Modules Branch	13
2.1.18	Storage Process Module Branch	14
2.2	Storage Profile Editors	14
2.2.1	Overview	14
2.2.2	Common Controls	14
2.2.2.1	Overview	14
2.2.2.2	Storage Profile Settings Table	14
2.2.2.3	Menu Bar	15
2.2.3	SPE Binary T001	15
2.2.3.1	Overview	15
2.2.3.2	Storage Profile Settings Table	16
2.2.3.3	Storage Profile Parameters Table	16
2.2.3.4	Path and File Name Configuration Table	17
2.2.3.5	File Splitting Table	18
2.2.3.6	Start Event Table	19
2.2.3.7	Stop Event Table	21
2.2.3.8	Pre Trigger Table.....	22

2.2.3.9	Post Trigger Table	23
2.2.3.10	Disk Clean-Up Table.....	23
2.2.3.11	Disk Limitation Table.....	24
2.2.3.12	Data Table	24
2.2.3.13	Menu Bar	25
2.2.3.14	Path Configuration Dialog.....	25
2.2.3.14.1	Overview	25
2.2.3.14.2	Path Configuration	26
2.2.3.15	File Name Configuration Dialog.....	26
2.2.3.15.1	Overview	26
2.2.3.15.2	File Name Configuration	26
2.2.3.16	Dropping of Items.....	27
2.3	Loading Profile Editors	27
2.3.1	Overview	27
2.3.2	Common Controls	27
2.3.2.1	Overview	27
2.3.2.2	Loading Profile Settings Table	27
2.3.2.3	Menu Bar	28
2.3.3	LPE Standard T001	29
2.3.3.1	Overview	29
2.3.3.2	Loading Profile Settings Table	29
2.3.3.3	Loading Profile Parameters Table	30
2.3.3.4	Default Time Configuration Table	30
2.3.3.5	Included Data Table.....	31
2.3.3.6	Data Time Configuration Table.....	32
2.3.3.7	Excluded Data Table.....	33
2.3.3.8	Menu Bar	33
2.3.3.9	Dropping of Items.....	33
2.4	Offline Data Loaders	34
2.4.1	Overview	34
2.4.2	ODL Standard T001	34
2.4.2.1	Overview	34
2.4.2.2	Offline File Locations Table	35
2.4.2.3	CMS2000 Date Structure Table.....	35
2.4.2.4	Offline Data Files Tree	36
2.4.2.4.1	Overview	36
2.4.2.4.2	Server Branch.....	36
2.4.2.4.3	File Location Branch	36
2.4.2.4.4	Offline Data Directory Branch.....	36
2.4.2.5	Log Entries Table.....	37
2.4.2.6	Menu Bar	37
2.4.2.7	Dropping of Items.....	37

2.4.2.8	Add Location Dialog.....	37
2.4.2.8.1	Overview	37
2.4.2.8.2	Location Parameters Table	38
2.4.2.9	Advanced Append Dialog	38
2.4.2.9.1	Overview	38
2.4.2.9.2	Appending Parameters Table	39
2.4.2.10	Advanced Overwrite Dialog	40
2.4.2.10.1	Overview	40
2.4.2.11	Advanced Export Dialog	41
2.4.2.11.1	Overview	41
2.4.2.11.2	Exporting Parameters Table	41
3	Contact Information	44

Table of Figures

<i>Figure 1: Example of a STS Explorer</i>	9
<i>Figure 2: Example of a SPE Binary T001</i>	15
<i>Figure 7: Example of a Path Configuration Dialog</i>	25
<i>Figure 7: Example of a File Name Configuration Dialog</i>	26
<i>Figure 3: Example of a LPE Standard T001</i>	29
<i>Figure 4: Example of an ODL Standard T001</i>	34
<i>Figure 5: Loading Progress Dialog</i>	37
<i>Figure 6: Example of an Add Location Dialog</i>	37
<i>Figure 7: Example of an Advanced Append Dialog</i>	38
<i>Figure 8: Example of an Advanced Overwrite Dialog</i>	40
<i>Figure 9: Example of an Advanced Export Dialog</i>	41

1 Preface

1.1 Purpose of this Document

This document provides detailed information about the functionalities and usage of the software

- SIPLUS CMS X-Tools

of the SIPLUS CMS product line.

In addition to the detailed information about each dialog and functionality of the **Storage System** which is found within this document, also the following documentation is available:

- SIPLUS CMS X-Tools - User Manual - 01 - Introduction
 - provides an introduction into the basic functionalities of SIPLUS CMS **X-Tools**
- SIPLUS CMS X-Tools - User Manual - 02 - Master Data System
 - provides detailed information about the functionality which is provided by the **Master Data System**
- SIPLUS CMS X-Tools - User Manual - 03 - Main Management System
 - provides detailed information about the functionality which is provided by the **Main Management System**
- SIPLUS CMS X-Tools - User Manual - 04 - Device Management System
 - provides detailed information about the functionality which is provided by the **Device Management System**
- SIPLUS CMS X-Tools - User Manual - 05 - Monitoring System
 - provides detailed information about the functionality which is provided by the **Monitoring System**
- SIPLUS CMS X-Tools - User Manual - 06 - Analyzing System
 - provides detailed information about the functionality which is provided by the **Analyzing System**
- SIPLUS CMS X-Tools - Release Notes
 - provides additional information about the released version of SIPLUS CMS **X-Tools**
- SIPLUS CMS X-Tools - Change Log
 - provides an overview about the changes which have been introduced with the current version of SIPLUS CMS **X-Tools**

1.2 Validity of this Document

This document is valid for the following software:

- SIPLUS CMS X-Tools Demo V 03.05
- SIPLUS CMS X-Tools Standard V 03.05
- SIPLUS CMS X-Tools Professional V 03.05

During the following pages, these software packages will be referred to by the term **X-Tools**.

1.3 Audience

This document is intended for personnel involved in the commissioning and using of the software:

- **X-Tools**

1.4 Notations

The following notations are used within this document:

- ***bold, italic*** text is being used for the main executables of ***X-Tools***
 - examples: ***X-Tools Client, X-Tools Server***
- **bold** text is being used for the software modules of ***X-Tools***
 - examples: **Main Management System, Device Profile Editor, IPE Socket T001**
- **green** text is being used for controls like tables and trees
 - examples: **Main Profile Settings** table, **Device Profile Data** table
- **orange** text is being used for simple controls like a menu button, a single row/column/cell of a table or a branch of a tree
 - examples: **Open...** menu button, **IP Address** column, **Target Device Name** cell, **Interfaces Branch**
- **dark yellow** text is being used for the entries of context menus
 - examples: **Advanced Append...**, **Edit**
- Camel Notation is being used for major terms of ***X-Tools***
 - examples: Main Profile, Interface Profile, User Accounts File, Analyzing Function
- < and > brackets are being used for keyboard keys
 - examples: <Ctrl>, <Alt>, <Shift>,
- [and] brackets are being used for mouse operations
 - examples: [left mouse button down], [mouse move]

2 Storage System

2.1 Storage System Explorer

2.1.1 Overview

The **Storage System Explorer** (in the following, the **STS Explorer**) is used in order to visualize and maintain all of the files and modules which are relevant for the **Storage System**. It is displayed as a tree which contains all of the relevant and available **Storage System** items. Via Drag&Drop the user is able to move items within the **STS Explorer** and from the **STS Explorer** to other dialogs of the **Storage System**. The following lines provide a short overview about the information that is available from the **STS Explorer**.

The following screenshot shows an example of a **STS Explorer**:

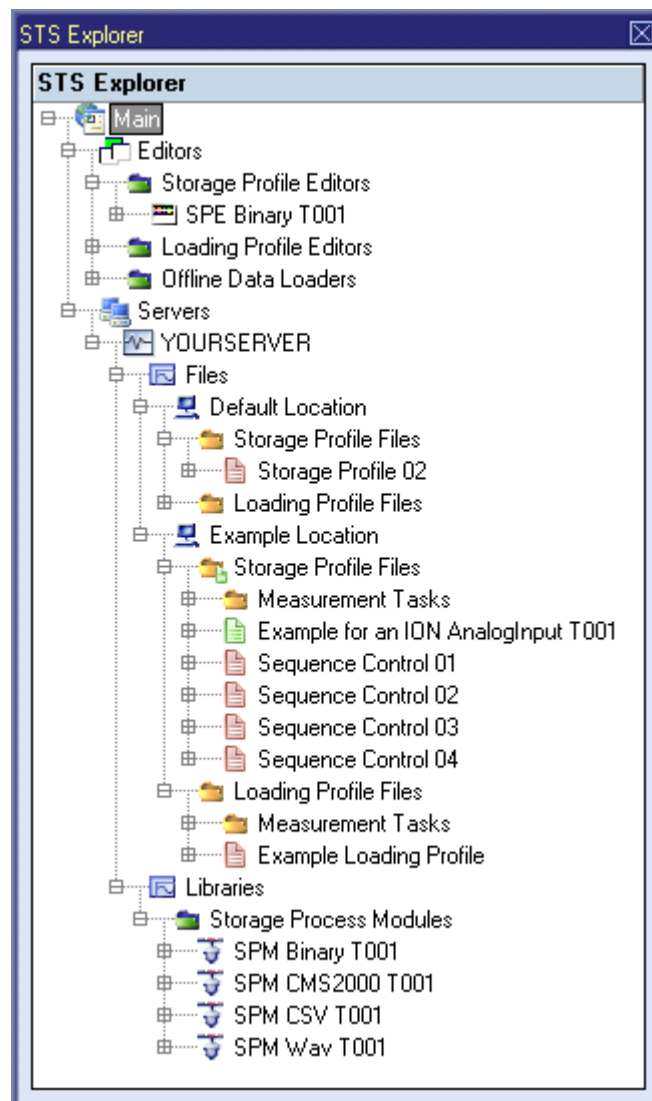


Figure 1: Example of a STS Explorer

Each branch of the **STS Explorer** has a defined task and provides certain functionalities. The following major branches are provided by the **STS Explorer**:

- Main Branch
- Editors Branch
- Storage Profile Editors Branch
- Storage Profile Editor Branch
- Loading Profile Editors Branch
- Loading Profile Editor Branch
- Offline Data Loaders Branch
- Offline Data Loader Branch
- Servers Branch
- Server Branch
- Files Branch
- File Location Branch
- Storage Profile Files Branch
- Loading Profile Files Branch
- Libraries Branch
- Storage Process Modules Branch
- Storage Process Module Branch

2.1.2 Main Branch

The one and only **Main Branch** provides all of the other items of the **STS Explorer**. It can be expanded and collapsed in order to show or hide its sub-items.

2.1.3 Editors Branch

The one and only **Editors Branch** provides all of the editors which are available within the **Storage System**.

2.1.4 Storage Profile Editors Branch

The one and only **Storage Profile Editors Branch** provides all of the **Storage Profile Editors** which are available within the **Storage System**. The tree of shown **Storage Profile Editors** is updated automatically whenever an editor file at the local disk is added/removed/modified.

2.1.5 Storage Profile Editor Branch

Each **Storage Profile Editor Branch** represents one available **Storage Profile Editor**. Dragging of a **Storage Profile Editor Branch** into the **Storage System** workspace opens an empty editor of the dragged type. After the editor has been opened, any of the present files of correct type can be dragged into it for visualization and/or editing.

The following specific context menu items are provided:

Context Menu Item	Description
Open	opens an empty Storage Profile Editor of the chosen type within the Storage System workspace
New Storage Profile > ...	opens a Storage Profile Editor of the chosen type within the Storage System workspace, creates a new Storage Profile and initializes it with default values

2.1.6 Loading Profile Editors Branch

The one and only **Loading Profile Editors Branch** provides all of the **Loading Profile Editors** which are available within the **Storage System**. The tree of shown **Loading Profile Editors** is updated automatically whenever an editor file at the local disk is added/removed/modified.

2.1.7 Loading Profile Editor Branch

Each **Loading Profile Editor Branch** represents one available **Loading Profile Editor**. Dragging of a **Loading Profile Editor Branch** into the **Storage System** workspace opens an empty editor of the dragged type. After the editor has been opened, any of the present files of correct type can be dragged into it for visualization and/or editing.

The following specific context menu items are provided:

Context Menu Item	Description
Open	opens an empty Loading Profile Editor of the chosen type within the Storage System workspace
New Loading Profile > ...	opens a Loading Profile Editor of the chosen type within the Storage System workspace, creates a new Loading Profile and initializes it with default values

2.1.8 Offline Data Loaders Branch

The one and only **Offline Data Loaders Branch** provides all of the **Offline Data Loaders** which are available within the **Storage System**. The tree of shown **Offline Data Loaders** is updated automatically whenever an editor file at the local disk is added/removed/modified.

2.1.9 Offline Data Loader Branch

Each **Offline Data Loader Branch** represents one available **Offline Data Loader**. Dragging of an **Offline Data Loader Branch** into the **Storage System** workspace opens an empty editor of the dragged type. After the editor has been opened, any of the present **X-Tools Servers** can be dragged into it in order to examine and load its present offline data.

The following specific context menu item is provided:

Context Menu Item	Description
Open > ...	opens an Offline Data Loader of the chosen type within the Storage System workspace and initializes it with default values

2.1.10 Servers Branch

The one and only **Servers Branch** provides all of the **X-Tools Servers** which are connected at the moment. The tree of shown **X-Tools Servers** is updated automatically whenever an **X-Tools Server** is attached or detached.

2.1.11 Server Branch

Each **Server Branch** represents one of the currently connected **X-Tools Servers**.

2.1.12 Files Branch

The **Files Branch** of each connected **X-Tools Server** provides all of the files which are available within the **Storage System**.

The following specific context menu item is provided:

Context Menu Item	Description
Add Location...	opens the Add Location dialog and adds a new Configuration File location afterwards

2.1.13 File Location Branch

Each **File Location Branch** provides all of the **Storage System** specific files which are available from the directory to which the Configuration File location points.

The following specific context menu items are provided:

Context Menu Item	Description
Delete Location	deletes the chosen file location from the hard disk
Remove Location	removes the chosen file location from X-Tools but keeps it at the hard disk

2.1.14 Storage Profile Files Branch

Each **Storage Profile Files Branch** provides all of the Storage Profiles which are available from the directory to which its Configuration File location points. The tree of shown Storage Profiles is updated automatically whenever a Storage Profile at the disk is added/deleted/modified.

Drag&Drop can be used in order to copy/move Storage Profile directories and Storage Profile files. The default Drag&Drop operation within an **X-Tools Server** is “move”, but when the <Ctrl> key is pressed a “copy” operation is performed. The default Drag&Drop operation from one **X-Tools Server** to another is “copy”, but when the <Shift> key is pressed a “move” operation is performed.

Storage Profile directories and Storage Profile files can be copied/moved within **Storage Profile Files Branches** (either within one **X-Tools Server** or over different **X-Tools Servers**) but they can not be copied/moved to another files branch. As the unique name of each Storage Profile also includes its storage directory, multiple Storage Profiles with matching file names can be stored in different Storage Profile directories.

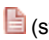
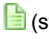



Dragging of a Storage Profile into the **Storage System** workspace opens the **Storage Profile Editor** for the dragged Storage Profile.

In case a **Storage Profile Directory Branch** (or any of its sub-branches) contains a suspended Storage Profile, the icon of the **Storage Profile Directory Branch** shows an according overlay. When there is no suspended Storage Profile but there is at least one started Storage Profile, the icon of the **Storage Profile Directory Branch** shows an according overlay also.

The following specific context menu items are provided:

Context Menu Item	Description
New Storage Profile > ...	opens a Storage Profile Editor of the chosen type within the Storage System workspace, creates a new Storage Profile and initializes it with default values
Edit	opens a new Storage Profile Editor for the chosen file within the Storage System workspace
Cut	cuts the currently selected items
Copy	copies the currently selected items
Paste	pastes currently copied/cut items
Delete	deletes the selected items from the disk
Rename	allows to rename the selected item directly within the STS Explorer
New Directory...	opens the Add Directory dialog and creates a new directory afterwards
Start	starts the currently selected items
Restart	restarts (= stops and starts) the currently selected items
Pause	pauses the currently selected items
Continue	continues the currently selected items
Stop	stops the currently selected items

The following icons are provided and indicate the current status of each Storage Profile:

Icon	Description
 (stopped)	The Storage Profile is stopped and does not perform any operations.
 (started)	The Storage Profile is started and performs the specified storing. The resulting data is stored to the disk and can be accessed via the Offline Data Loader .
 (paused)	When the Storage Profile is paused it closes its current offline data files and does not perform any further storing until it is being continued.
 (suspended)	The Storage Profile is suspended because it has detected an error condition (e.g. because the input data became unavailable or because there is no more space available at the storage location, ...). The Storage Profile will resume after the error condition has been solved. While a Storage Profile is suspended, a possible configured clean-up is being continued without interruption and all of the current offline data files are being closed. In case the Storage Profile is suspended and its according Storage Profile File at the disk is being updated, the updated Storage Profile File is being loaded and the Storage Profile uses the updated configuration for its further processing.
 (triggering)	The Storage Profile is triggering and does not perform storing yet. As soon as the specified start event occurs the storing is being started.

2.1.15 Loading Profile Files Branch

Each **Loading Profile Files Branch** provides all of the Loading Profiles which are available from the directory to which its Configuration File location points. The tree of shown Loading Profiles is updated automatically whenever a Loading Profile at the disk is added/deleted/modified.

Drag&Drop can be used in order to copy/move Loading Profile directories and Loading Profile files. The default Drag&Drop operation within an **X-Tools Server** is “move”, but when the <Ctrl> key is pressed a “copy” operation is performed. The default Drag&Drop operation from one **X-Tools Server** to another is “copy”, but when the <Shift> key is pressed a “move” operation is performed.

Loading Profile directories and Loading Profile files can be copied/moved within **Loading Profile Files Branches** (either within one **X-Tools Server** or over different **X-Tools Servers**) but they can not be copied/moved to another files branch. As the unique name of each Loading Profile also includes its storage directory, multiple Loading Profiles with matching file names can be stored in different Loading Profile directories.

Dragging of a Loading Profile into the **Storage System** workspace opens the **Loading Profile Editor** for the dragged Loading Profile.

The following specific context menu items are provided:

Context Menu Item	Description
New Loading Profile > ...	opens a Loading Profile Editor of the chosen type within the Storage System workspace, creates a new Loading Profile and initializes it with default values
Edit	opens a new Loading Profile Editor for the chosen file within the Storage System workspace
Cut	cuts the currently selected items
Copy	copies the currently selected items
Paste	pastes currently copied/cut items
Delete	deletes the selected items from the disk
Rename	allows to rename the selected item directly within the STS Explorer
New Directory...	opens the Add Directory dialog and creates a new directory afterwards

2.1.16 Libraries Branch

The **Libraries Branch** of each connected **X-Tools Server** provides all of the libraries which are available for the **Storage System**.

2.1.17 Storage Process Modules Branch

The **Storage Process Modules Branch** of each connected **X-Tools Server** provides all of the **Storage Process Modules** which are available for the **Storage System**. The tree of shown **Storage Process Modules** is updated automatically whenever a **Storage Process Module** at the disk is added/removed/modified.

2.1.18 Storage Process Module Branch

Each **Storage Process Module Branch** represents one available **Storage Process Module**.

The following specific context menu items are provided:

Context Menu Item	Description
New Storage Profile	opens a Storage Profile Editor of the chosen type within the Storage System workspace, creates a new Storage Profile and initializes it with default values
Load Offline Data	opens a Offline Data Loader of the chosen type within the Storage System workspace and initializes it with default values

2.2 Storage Profile Editors

2.2.1 Overview

Storage Profile Editors are used in order to edit Storage Profiles. A Storage Profile contains all of the information which is needed in order to start the storing of the defined data to the specified location. Multiple Storage Profiles can be maintained and/or executed at each **X-Tools Server** simultaneously.

Storage Profile Editors are known and accessed exclusively by the **X-Tools Client**, the **X-Tools Server** has no knowledge about **Storage Profile Editors** at all. However, the **X-Tools Server** is responsible to maintain Storage Profile Files and therefore all Storage Profile reading and writing operations are performed via the **X-Tools Server**.

2.2.2 Common Controls

2.2.2.1 Overview

As all **Storage Profile Editors** are built up in a similar way, they share some common controls (e.g. tables and the menu bar) which are the same in all **Storage Profile Editors**.

Each control of a **Storage Profile Editor** has a defined task and provides certain functionalities. The following major controls are provided by the **Storage Profile Editors**. Depending to the **Storage Profile Editor**, one or more parts may not be supported (because they are not needed) and one or more parts may be present in addition to the following ones (because they are necessary):

- Storage Profile Settings Table
- Menu Bar

2.2.2.2 Storage Profile Settings Table

The **Storage Profile Settings** table contains all of the profile-dependent settings which can be configured within a Storage Profile:

Parameter	Description
Target Name	contains the name of the target to which the Storage Profile is stored
Storage Path	contains the path to which the Storage Profile is stored (absolute or symbolic path)
Creation Date	contains the creation date of the Storage Profile
Modification Date	contains the last modification date of the Storage Profile
Profile Description	contains the description of the Storage Profile
Company Name	contains the company name
Author Name	contains the author name

Target Name

All of the information about the **Target Name** and **Storage Path** is set up within the **Save As** dialog.

2.2.2.3 Menu Bar

Menu Button	Description
New	This button creates a new, empty Storage Profile and initializes the Storage Profile Settings table with the default values for new Storage Profiles. In case there is a Storage Profile opened already, it is closed automatically before the new one is being created.
Open...	This button opens the Open dialog where the user is able to select the file which shall be opened.
Save	This button saves the currently opened Storage Profile to the currently known storage location. In case the storage location has not been defined yet, the Save As dialog is popping up automatically and the user is able to select the desired storage location.
Save As...	This button opens the Save As dialog where the user is able to select the desired storage location.
Close	This button closes the editor. In case the currently opened Storage Profile is not saved, the editor asks the user whether the Storage Profile shall be saved before it is closed.

2.2.3 SPE Binary T001

2.2.3.1 Overview

The **SPE Binary T001** is used in order to visualize, create and edit Storage Profiles of type “Binary T001”. Multiple editors of this type can be opened and used simultaneously.

The following screenshot shows an example of a **SPE Binary T001**:

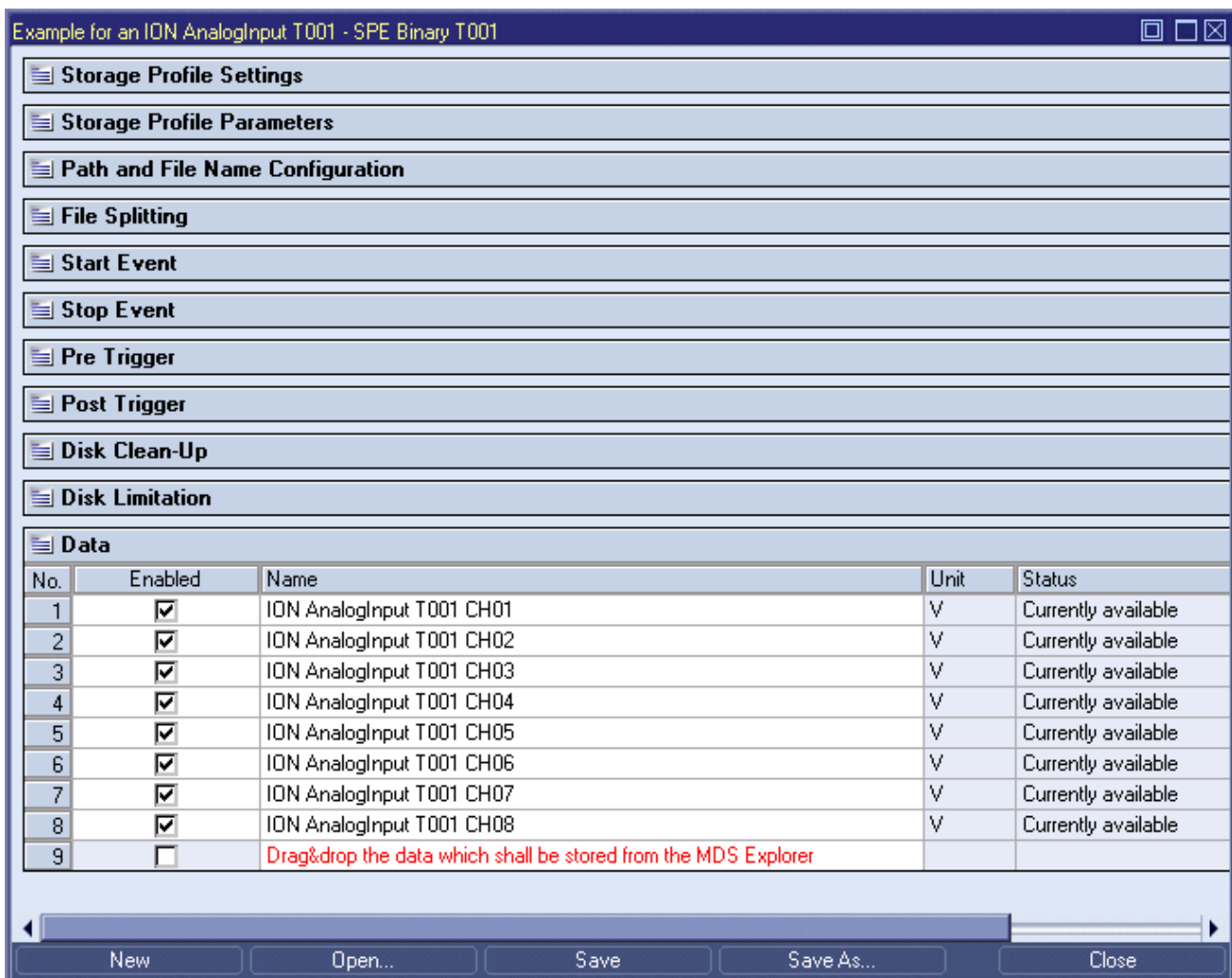


Figure 2: Example of a **SPE Binary T001**

Each control of the **SPE Binary T001** has a defined task and provides certain functionalities. The following major controls are provided by the **SPE Binary T001**:

- Storage Profile Settings Table
- Storage Profile Parameters Table
- Path and File Name Configuration Table
- File Splitting Table
- Start Event Table
- Stop Event Table
- Pre Trigger Table
- Post Trigger Table
- Disk Clean-Up Table
- Disk Limitation Table
- Data Table
- Menu Bar
- Path Configuration Dialog
- File Name Configuration Dialog
- Dropping of Items

2.2.3.2 Storage Profile Settings Table

The standard **Storage Profile Settings** table is being used by the **SPE Binary T001** (see point 2.2.2.2).

2.2.3.3 Storage Profile Parameters Table

The **Storage Profile Parameters** table contains the additional parameters of the currently opened Storage Profile:

Row	Description
Time Domain	allows to choose the time domain on which the Storage Profile shall operate
Parallel Storage	allows to switch between the available modes for the parallel storage

Time Domain

Time Domain	Description
Online Data with absolute Time-stamps	the Storage Profile stores the online data according to the names which are specified via the Data table
Offline Data with absolute Time-stamps	the Storage Profile stores the offline data with absolute names according to the names which are specified via the Data table
Offline Data with relative Timestamps	the Storage Profile stores the offline data with relative names according to the names which are specified via the Data table

In case a data with the specified name and chosen time domain is not present, the Storage Profile creates empty files at the disk for the according data.

Parallel Storage

Parallel Storage	Description
Do not allow parallel Storage	in case a start event occurs when a storing is going on already and no matching stop event took place yet, this other start event is ignored in case a post trigger time is configured and another start event occurs during the post trigger time, the post trigger time is cancelled and the storing of the offline data file continues as if no stop event would have occurred at all
Start a parallel Storage whenever another Start Event occurs	whenever a start event occurs it starts another, parallel storage of all data which is configured for this Storage Profile in case the stop event is by data, the following mechanisms apply: <ul style="list-style-type: none"> the Minimal Start to Stop Interval Format within the Stop Event table can be set to "Automatic" - in this case, the Storage Profile determines the minimal start to stop interval automatically <ul style="list-style-type: none"> in case "Automatic" is chosen, the Storage Profile must be started before the to-be-monitored process starts to run ... in case the Storage Profile would be started while the to-be-monitored process is running already, it is unable to assign the occurring start and stop events properly in case the start of the Storage Profile could happen at a moment where the to-be-monitored process is running already, the minimal start to stop interval must be configured manually in case a minimal start to stop interval is provided manually, all stop events which are before "start event time + minimal start to stop interval" are ignored
Start a parallel Storage only in case another Start Event occurs during the Post Trigger Time	in case a start event occurs when a storing is going on already and no matching stop event took place yet, this other start event is ignored in case the stop event took place already and the new start event occurs before the end of the post trigger time it starts another, parallel storage of all data which is configured for this Storage Profile

2.2.3.4 Path and File Name Configuration Table

The **Subdirectory Creation** table is used in order to specify the structure and presence of the date and time related directories which are created by the current Storage Profile when it is running. The table contains two rows, where the first row contains the cells according to the described columns and the second row contains a sample directory which would be the result of the current settings:

Row	Description
Storage Location	allows to switch between the already defined storage locations and to define additional storage locations
Path	displays an example of the currently configured path and allows to change the path configuration via the Path Configuration dialog
File Name	displays an example of the currently configured file name and allows to change the file name configuration via the File Name Configuration dialog
File overwrite Mode	allows to switch between the available file overwrite modes
Storage ID 1	contains the name of the data whose value shall be used as Storage ID 1
Storage ID 2	contains the name of the data whose value shall be used as Storage ID 2
Storage ID 3	contains the name of the data whose value shall be used as Storage ID 3

Storage Location

The desired storage location for the data can be chosen by selecting of an already defined storage location via the provided combo box, which contains the symbolic names of all of the currently known root data locations of the specified target **X-Tools Server**.

The last entry of the combo box is "..." and opens the **Add Location** dialog when it is being chosen. When a new storage location has been defined via the **Add Location** dialog, it is added to the **Storage Location** combo box automatically and automatically becomes the currently selected one.

The actual directory names to which data is stored by the current Storage Profile are composed out of the following parts:

- absolute path of the chosen location
- Storage Profile directory structure below its Storage Profile storage location (like it is shown by the **STS Explorer**)
- Storage Profile name
- directories and files according to the settings from the settings from the **Path** and **File Name** parameters

File overwrite Mode

File overwrite Mode	Description
Create a unique Directory Path	in case the full path (= directory path + file name) of the to-be-stored file exists already, the name of the last subdirectory of the directory path gets a postfix like "(1)" instead of "1", the first number which leads to a unique directory path is being used
Create a unique File Name	in case the full path (= directory path + file name) of the to-be-stored file exists already, the name of the file gets a postfix like "(1)" instead of "1", the first number which leads to a unique file name is being used
Overwrite the existing File	in case the full path (= directory path + file name) of the to-be-stored file exists already, the old file is overwritten with the new values from the current storing the contents of the new file are the same as if the old file would not have existed
Do not store the new File	in case the full path (= directory path + file name) of the to-be-stored file exists already, the old file is left unchanged and the newly to-be-stored values are not being stored

Storage ID 1

The desired data for the **Storage ID 1** either can be set through Drag&Drop from the **MDS Explorer** or through typing of its name by hand. In case a Storage ID is used within the directory path and/or the file name configuration, its value at the moment of the start event is inserted into the directory path and/or file name. The value always is interpreted as Integer and is formatted without any leading zeros.

Storage ID 2

See **Storage ID 1**.

Storage ID 3

See **Storage ID 1**.

2.2.3.5 File Splitting Table

The **File Splitting** table contains all of the settings which are relevant for the file splitting of data files. Depending to the configurations which are chosen within the **File Splitting** table, the according columns from the table below are being used and not all columns may be visible simultaneously:

Column	Description
No.	contains the row number
Splitting Mode	contains the splitting mode
Splitting Interval Format	contains the splitting interval format
Splitting Interval Value	contains the splitting interval value

Splitting Mode

Splitting Mode	Description
Off	In this splitting mode, all values of one data are being stored into one file which lasts from the start of the Storage Profile until its stop.
Time based	In this splitting mode, a new directory and data file is being created each amount of time which is specified as splitting interval.

2.2.3.6 Start Event Table

The **Start Event** table contains all of the settings which are relevant for the start event. Depending to the configurations which are chosen within the **Start Event** table, the according columns from the table below are being used and not all columns may be visible simultaneously:

Column	Description
No.	contains the row number
Event Type	contains the start event type
Trigger Mode	contains the start trigger mode
Trigger Data Name	contains the name of the data onto which shall be triggered
Trigger Data Type	contains the data type of the data onto which shall be triggered
Trigger Type	contains the start trigger type
Threshold Type	contains the start trigger threshold type
Interval Type	contains the start trigger interval type
Bounce Duration Format	contains the bounce duration format
Bounce Duration Value	contains the bounce duration value
Threshold Value	contains the threshold value
Lower Limit	contains the lower limit of the interval
Upper Limit	contains the upper limit of the interval
Hysteresis Value	contains the hysteresis value
Timer Interval Format	contains the timer interval format
Timer Interval Value	contains the timer interval value
Date	contains the start date
Time	contains the start time

Event Type

Event Type	Description
Manually	In case of this event type, the actual storing of data is started immediately when the Storage Profile is being started.
by Data	In case of this event type, the actual storing of data is started as soon as the specified data trigger condition has elapsed.
by Timer	In case of this event type, the actual storing of data is started as soon as the specified timer value has elapsed.
by Date and Time	In case of this event type, the actual storing of data is started as soon as the specified date and time has been reached. In case the Storage Profile is being started after the specified start date and time, it starts to store data and to create offline data files immediately.

Trigger Mode

Trigger Mode	Description
Once	In this trigger mode, the start trigger is starting the storage only once. Thus, the Storage Profile is stopped completely when the stop condition has been reached after the first start.
Repeating	In this trigger mode, the Storage Profile is continuing to trigger after each stop condition and may restart the storing infinite times. Furthermore, this trigger mode supports the parallel storage of multiple trigger events simultaneously in case the post trigger is turned on and the according post trigger option is enabled.

Trigger Data Name

The desired trigger data either can be set through Drag&Drop from the **MDS Explorer** or through typing of its name by hand.

Trigger Data Type

The type of the trigger data is important for the selection of the **Trigger Type** later. In case of Drag&Drop of the desired data from the **MDS Explorer**, the **Trigger Data Type** is set automatically. However, the user is free to change it at any times. In case the Storage Profile is started and the specified type of the current trigger data does not match the type of the data within the system, the Storage Profile is put into suspended state until the types match.

Trigger Type

Trigger Type	Description
Threshold	In case of this trigger type, the start trigger is waiting until the specified threshold is reached.
Interval	In case of this trigger type, the start trigger is waiting until the specified interval is reached.

Threshold Type

Threshold Type	Description
Rising Edge	In case of this threshold type, the start trigger is waiting until a rising edge is detected.
Falling Edge	In case of this threshold type, the start trigger is waiting until a falling edge is detected.
Value is 0	In case of this threshold type, the start trigger is waiting until a value of 0 is detected.
Value is 1	In case of this threshold type, the start trigger is waiting until a value of 1 is detected.
Rising Edge with Threshold	In case of this threshold type, the start trigger is waiting until a rising edge above the specified threshold is detected.
Falling Edge with Threshold	In case of this threshold type, the start trigger is waiting until a falling edge below the specified threshold is detected.
Value > Threshold	In case of this threshold type, the start trigger is waiting until a value which is bigger than the specified threshold is detected.
Value < Threshold	In case of this threshold type, the start trigger is waiting until a value which is lower than the specified threshold is detected.

Interval Type

Interval Type	Description
Join Interval	In case of this interval type, the start trigger is waiting until the specified interval is joined.
Leave Interval	In case of this interval type, the start trigger is waiting until the specified interval is left.
Inside Interval	In case of this interval type, the start trigger is waiting until a value inside the interval is detected.
Outside Interval	In case of this interval type, the start trigger is waiting until a value outside the interval is detected.

2.2.3.7 Stop Event Table

The **Stop Event** table contains all of the settings which are relevant for the stop event. Depending to the configurations which are chosen within the **Stop Event** table, the according columns from the table below are being used and not all columns may be visible simultaneously:

Column	Description
No.	contains the row number
Event Type	contains the stop event type
Trigger Data Name	contains the name of the data onto which shall be triggered
Trigger Data Type	contains the data type of the data onto which shall be triggered
Minimal Start to Stop Interval Format	contains the minimal start to stop interval format
Minimal Start to Stop Interval Value	contains the minimal start to stop interval value
Trigger Type	contains the stop trigger type
Threshold Type	contains the stop trigger threshold type
Interval Type	contains the stop trigger interval type
Bounce Duration Format	contains the bounce duration format
Bounce Duration Value	contains the bounce duration value
Threshold Value	contains the threshold value
Lower Limit	contains the lower limit of the interval
Upper Limit	contains the upper limit of the interval
Hysteresis Value	contains the hysteresis value
Timer Interval Format	contains the timer interval format
Timer Interval Value	contains the timer interval value
Date	contains the stop date
Time	contains the stop time

Event Type

Event Type	Description
Manually	In case of this event type, the actual storing of data is stopped when the Storage Profile is being stopped.
by Data	In case of this event type, the actual storing of data is stopped as soon as the specified data trigger condition has elapsed.
by Timer	In case of this event type, the actual storing of data is stopped as soon as the specified timer value has elapsed.
by Date and Time	In case of this event type, the actual storing of data is stopped as soon as the specified date and time has been reached.
Immediately	In case of this event type, the actual storing of data is stopped at exactly the time of the start event. In case a pre trigger and/or a post trigger are defined, the data from these times is stored.

Trigger Data Name

The desired trigger data either can be set through Drag&Drop from the **MDS Explorer** or through typing of its name by hand.

Trigger Data Type

The type of the trigger data is important for the selection of the **Trigger Type** later. In case of Drag&Drop of the desired data from the **MDS Explorer**, the **Trigger Data Type** is set automatically. However, the user is free to change it at any times. In case the Storage Profile is started and the specified type of the current trigger data does not match the type of the data within the system, the Storage Profile is put into suspended state until the types match.

Minimal Start to Stop Interval

See point 2.2.3.3.

Trigger Type

Trigger Type	Description
Threshold	In case of this trigger type, the stop trigger is waiting until the specified threshold is reached.
Interval	In case of this trigger type, the stop trigger is waiting until the specified interval is reached.

Threshold Type

Threshold Type	Description
Rising Edge	In case of this threshold type, the stop trigger is waiting until a rising edge is detected.
Falling Edge	In case of this threshold type, the stop trigger is waiting until a falling edge is detected.
Value is 0	In case of this threshold type, the stop trigger is waiting until a value of 0 is detected.
Value is 1	In case of this threshold type, the stop trigger is waiting until a value of 1 is detected.
Rising Edge with Threshold	In case of this threshold type, the stop trigger is waiting until a rising edge above the specified threshold is detected.
Falling Edge with Threshold	In case of this threshold type, the stop trigger is waiting until a falling edge below the specified threshold is detected.
Value > Threshold	In case of this threshold type, the stop trigger is waiting until a value which is bigger than the specified threshold is detected.
Value < Threshold	In case of this threshold type, the stop trigger is waiting until a value which is lower than the specified threshold is detected.

Interval Type

Interval Type	Description
Join Interval	In case of this interval type, the stop trigger is waiting until the specified interval is joined.
Leave Interval	In case of this interval type, the stop trigger is waiting until the specified interval is left.
Inside Interval	In case of this interval type, the stop trigger is waiting until a value inside the interval is detected.
Outside Interval	In case of this interval type, the stop trigger is waiting until a value outside the interval is detected.

2.2.3.8 Pre Trigger Table

The **Pre Trigger** table contains all of the settings which are relevant for the pre trigger. Depending to the configurations which are chosen within the **Pre Trigger** table, the according columns from the table below are being used and not all columns may be visible simultaneously:

Column	Description
No.	contains the row number
Pre Trigger Mode	contains the pre trigger mode
Duration Format	contains the duration format
Duration Value	contains the duration value

Pre Trigger Mode

Pre Trigger Mode	Description
Off	In case of this pre trigger mode, the first value which is being stored to file matches the time of the start event without additional values from the time before the start event.
On	In case of this pre trigger mode, the first value which is being stored to file matches the time of the start event minus the specified duration.

2.2.3.9 Post Trigger Table

The **Post Trigger** table contains all of the settings which are relevant for the post trigger. Depending to the configurations which are chosen within the **Post Trigger** table, the according columns from the table below are being used and not all columns may be visible simultaneously:

Column	Description
No.	contains the row number
Post Trigger Mode	contains the post trigger mode
Duration Format	contains the duration format
Duration Value	contains the duration value

Post Trigger Mode

Post Trigger Mode	Description
Off	in case of this post trigger mode, the last value which is being stored to file matches the time of the stop event without additional values from the time after the stop event
On	in case of this post trigger mode, the last value which is being stored to file matches the time of the stop event plus the specified duration the chosen setting of the Parallel Storage parameter from the Storage Profile Parameters table describes the behavior of the Storage Profile in case another start event occurs during the post trigger time

2.2.3.10 Disk Clean-Up Table

The **Disk Clean-Up** table contains all of the settings which are relevant for the disk clean-up. Depending to the configurations which are chosen within the **Disk Clean-Up** table, the according columns from the table below are being used and not all columns may be visible simultaneously:

Column	Description
No.	contains the row number
Clean-Up Type	contains the clean-up type
Clean-Up Interval Format	contains the clean-up interval format
Clean-Up Interval Value	contains the clean-up interval value
Memory Format	contains the memory format
Memory Value	contains the memory value

Clean-Up Type

Clean-Up Type	Description
Do not perform Clean-Up	In case of this clean-up type, the Storage Profile does not perform any file clean-up.
Delete old Files	In case of this clean-up type, the Storage Profile deletes all files which have been created longer ago than the specified interval.
Limit used Memory	In case of this clean-up type, the Storage Profile deletes its oldest files in case all of its files together need more than the specified maximal amount of memory.
Assure remaining Memory	In case of this clean-up type, the Storage Profile deletes its oldest files in case the storage location has less than the specified amount of memory left.

2.2.3.11 Disk Limitation Table

The **Disk Limitation** table contains all of the settings which are relevant for the disk limitation. Depending to the configurations which are chosen within the **Disk Limitation** table, the according columns from the table below are being used and not all columns may be visible simultaneously:

Column	Description
No.	contains the row number
Limitation Type	contains the limitation type
Memory Format	contains the memory format
Memory Value	contains the memory value
Percentage	contains the percentage

Limitation Type

Limitation Type	Description
Do not check a Limit	In case of this limitation type, the Storage Profile does not perform any file clean-up.
Leave absolute Memory	In case of this limitation type, the Storage Profile is stopped in case the storage location has less than the specified amount of memory left.
Leave relative Memory	In case of this limitation type, the Storage Profile is stopped in case the storage location has less than the specified amount of memory left.

2.2.3.12 Data Table

The **Data** table contains all of the data which are to be stored:

Column	Description
No.	contains the row number
Enabled	specifies whether the data within this row shall be enabled during the start of the Storage Profile or not
Name	contains the name of the data
Unit	contains the unit of the data
Status	contains the current status of the data
Storage Mode	contains the storage mode of the data
Storage Parameters	contains the storage parameters of the data

The user is able to highlight a complete row (or multiple rows) and to remove them via the context menu (**Remove** context menu item) and/or via the keyboard (key).

In order to put some data definition into an empty row, a new, valid data name can be entered or the definitions from another row can be pasted into the empty one. New data definitions also can be added via copy/move operations of existing data definitions from other Storage Profiles of matching type.

A highlighted row (or multiple rows) can be copied/cut/pasted to another row of the **Data** table via mechanisms of the context menu (**Copy**, **Cut** and **Paste** context menu items) and/or via the keyboard (<Ctrl+C>, <Ctrl+X> and <Ctrl+V> keys).

Any data which is copied from the **Data** table of a Storage Profile can be copied to the **Data** table of other Storage Profiles as well as to the **Included Data** and **Excluded Data** tables of Loading Profiles.

The last row of the **Data** table always is empty (except the **Name** cell, see below) and therefore allows the user to add a new data by typing another name into the **Name** field of this last row. All other cells of the last row are empty and disabled as long as the **Name** field is empty. Whenever a new name has been entered into the **Name** field, another new, empty row is added to the **Data** table automatically.

Status

The status of each data is determined by the **SPE Binary T001** automatically. In case the specified data is present as online data at the moment, "Currently available" is displayed. Contrary, "Currently not available" is displayed in case the specified data is not present as online data at the moment.

Storage Mode

Storage Mode	Description
Each Value	In this storage mode, each value from the ring buffer of a data is put into the according file.
Changes only	In this storage mode, a value from the ring buffer of a data is put into the according file only in case the difference in between the value from the ring buffer and the last value from the file is bigger than the specified hysteresis.
Changes and Interval	In this storage mode, a value from the ring buffer of a data is put into the according file in case the difference in between the value from the ring buffer and the last value from the file is bigger than the specified hysteresis. In addition, the last known value from the ring buffer is put into the file each amount of time which is specified as interval.
Interval only	In this storage mode, a value from the ring buffer of a data is never put into the according file directly. Instead, the last known value from the ring buffer is put into the file each amount of time which is specified as interval.

Storage Parameter

Storage Parameter	Description
N/A	This storage parameter is relevant for the storage mode Each Value only and is being applied automatically in case this storage mode is being chosen.
Hysteresis	This storage parameter allows specifying via edit box the hysteresis for to be stored values and is being applied automatically in case the storage mode Changes Only is being chosen.
Hysteresis and Interval	These storage parameters allow to specify via edit box the hysteresis and the amount of time for the to be stored values and are being applied automatically in case the storage mode Changes and Interval is being chosen.
Interval	This storage parameter allows specifying via edit box the amount of the time for to be stored values and is being applied automatically in case the storage mode Interval Only is being chosen.

2.2.3.13 Menu Bar

The standard **Menu Bar** is being used by the **SPE Binary T001** (see point 2.2.2.3).

2.2.3.14 Path Configuration Dialog

2.2.3.14.1 Overview

The following screenshot shows an example of a **Path Configuration** dialog:

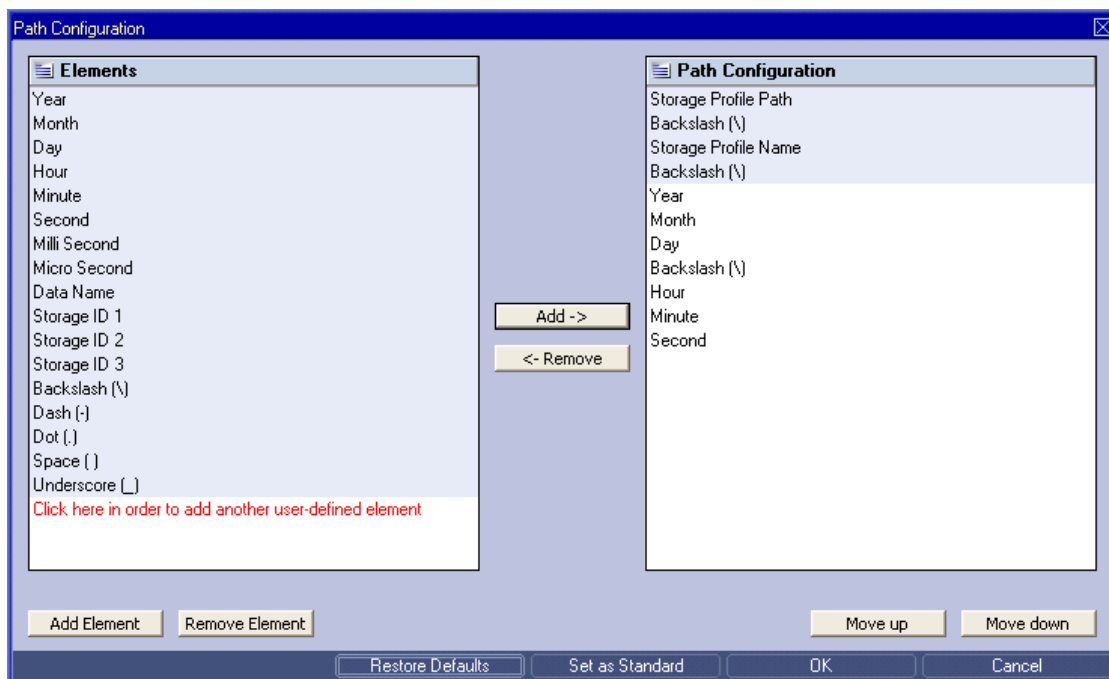


Figure 3: Example of a **Path Configuration** Dialog

2.2.3.14.2 Path Configuration

The **Path Configuration** list at the right side of this dialog contains the template for the to-be-created storage path. Elements from the **Elements** list can be added after the hard-coded elements at the top of the **Path Configuration** list via the **Add ->** button and via the context menu of the **Elements** list. Via the **Move up** and **Move down** buttons, the position of elements can be changed within the **Path Configuration** list. The **<- Remove** button as well as the keyboard key and the context menu of the **Path Configuration** list can be used in order to remove elements from the **Path Configuration** list.

In addition, user-defined elements with a static name can be added to the **Elements** list. From there, they can be used like any of the standard elements.

The **Set as Standard** button from the menu bar enables the current path configuration as default value for new Storage Profiles, **Restore Defaults** resets the path configuration of the current Storage Profile to the default values.

Any element from the **Elements** list can be added zero, one or multiple times to the **Path Configuration** list.

2.2.3.15 File Name Configuration Dialog

2.2.3.15.1 Overview

The following screenshot shows an example of a **File Name Configuration** dialog:

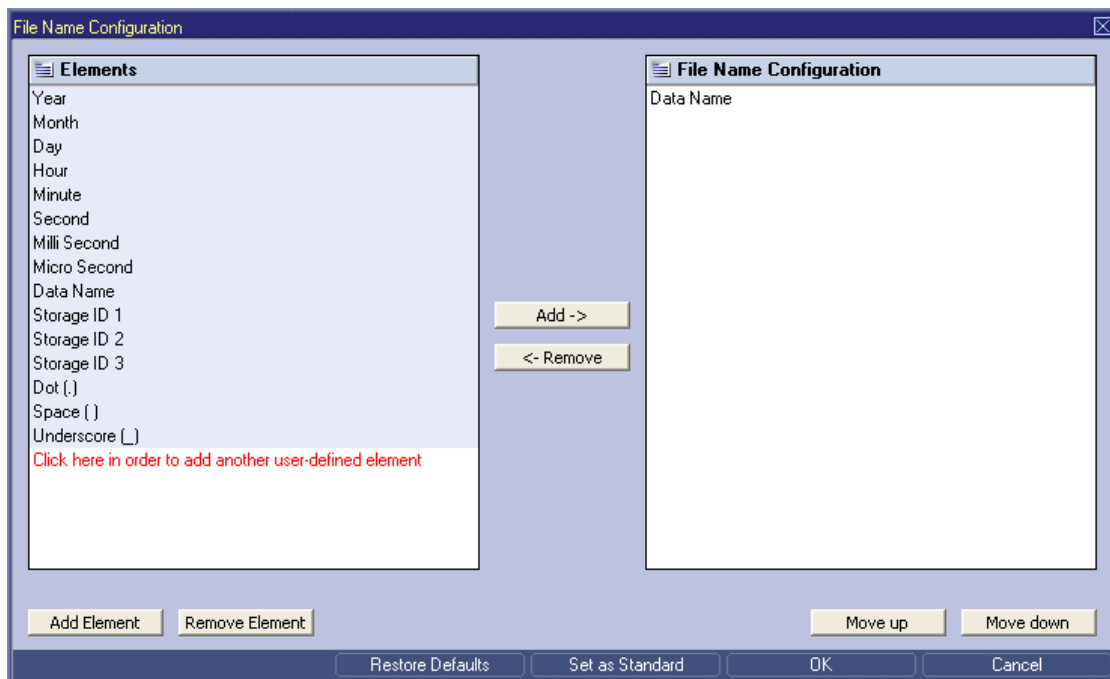


Figure 4: Example of a **File Name Configuration** Dialog

2.2.3.15.2 File Name Configuration

The **File Name Configuration** list at the right side of this dialog contains the template for the to-be-created file names. Elements from the **Elements** list can be added to the **File Name Configuration** list via the **Add ->** button and via the context menu of the **Elements** list. Via the **Move up** and **Move down** buttons, the position of elements can be changed within the **File Name Configuration** list. The **<- Remove** button as well as the keyboard key and the context menu of the **File Name Configuration** list can be used in order to remove elements from the **File Name Configuration** list.

In addition, user-defined elements with a static name can be added to the **Elements** list. From there, they can be used like any of the standard elements.

The **Set as Standard** button from the menu bar enables the current file name configuration as default value for new Storage Profiles, **Restore Defaults** resets the file name configuration of the current Storage Profile to the default values.

Any element from the **Elements** list can be added zero, one or multiple times to the **File Name Configuration** list.

2.2.3.16 Dropping of Items

Dropped Item	Description
Storage Profile File Branches of type "SPF Binary T001"	opens the dropped Storage Profile
Online Data Branches in case the SPE Binary T001 is empty	creates a new Storage Profile, initializes it with default values and adds the dropped online data to the Data table
Online Data Branches in case the SPE Binary T001 is not empty	adds the dropped online data to the Data table or inserts the dropped online data as start trigger data or inserts the dropped online data as stop trigger data

2.3 Loading Profile Editors

2.3.1 Overview

Loading Profile Editors are used in order to edit Loading Profiles. A Loading Profile contains all of the information which is needed in order to specify which of the present data shall be loaded by an **Offline Data Loader**. The detailed interactions in between Loading Profiles and **Offline Data Loaders** as well as the possible parameters for Loading Profiles are dependent to the used storage format and are discussed within the description of each **Loading Profile Editor** and **Offline Data Loader**.

Loading Profile Editors are known and accessed exclusively by the *X-Tools Client*, the *X-Tools Server* has no knowledge about **Loading Profile Editors** at all. However, the *X-Tools Server* is responsible to maintain Loading Profile Files and therefore all Loading Profile reading and writing operations are performed via the *X-Tools Server*.

2.3.2 Common Controls

2.3.2.1 Overview

As all **Loading Profile Editors** are built up in a similar way, they share some common controls (e.g. tables and the menu bar) which are the same in all **Loading Profile Editors**.

Each control of a **Loading Profile Editor** has a defined task and provides certain functionalities. The following major controls are provided by the **Loading Profile Editors**. Depending to the **Loading Profile Editor**, one or more parts may not be supported (because they are not needed) and one or more parts may be present in addition to the following ones (because they are necessary):

- Loading Profile Settings Table
- Menu Bar

2.3.2.2 Loading Profile Settings Table

The **Loading Profile Settings** table contains all of the profile-dependent settings which can be configured within a Loading Profile:

Parameter	Description
Target Name	contains the name of the target to which the Loading Profile is stored
Storage Path	contains the path to which the Loading Profile is stored (absolute or symbolic path)
Creation Date	contains the creation date of the Loading Profile
Modification Date	contains the last modification date of the Loading Profile
Profile Description	contains the description of the Loading Profile
Company Name	contains the company name
Author Name	contains the author name

Target Name

All of the information about the **Target Name** and **Storage Path** is set up within the **Save As** dialog.

2.3.2.3 Menu Bar

Menu Button	Description
New	This button creates a new, empty Loading Profile and initializes the Loading Profile Settings table with the default values for new Loading Profiles. In case there is a Loading Profile opened already, it is closed automatically before the new one is being created.
Open...	This button opens the Open dialog where the user is able to select the file which shall be opened.
Save	This button saves the currently opened Loading Profile to the currently known storage location. In case the storage location has not been defined yet, the Save As dialog is popping up automatically and the user is able to select the desired storage location.
Save As...	This button opens the Save As dialog where the user is able to select the desired storage location.
Close	This button closes the editor. In case the currently opened Loading Profile is not saved, the editor asks the user whether the Loading Profile shall be saved before it is closed.

2.3.3 LPE Standard T001

2.3.3.1 Overview

The **LPE Standard T001** is used in order to visualize, create and edit Loading Profiles of type “Standard T001”. Multiple editors of this type can be opened and used simultaneously.

The following screenshot shows an example of a **LPE Standard T001**:

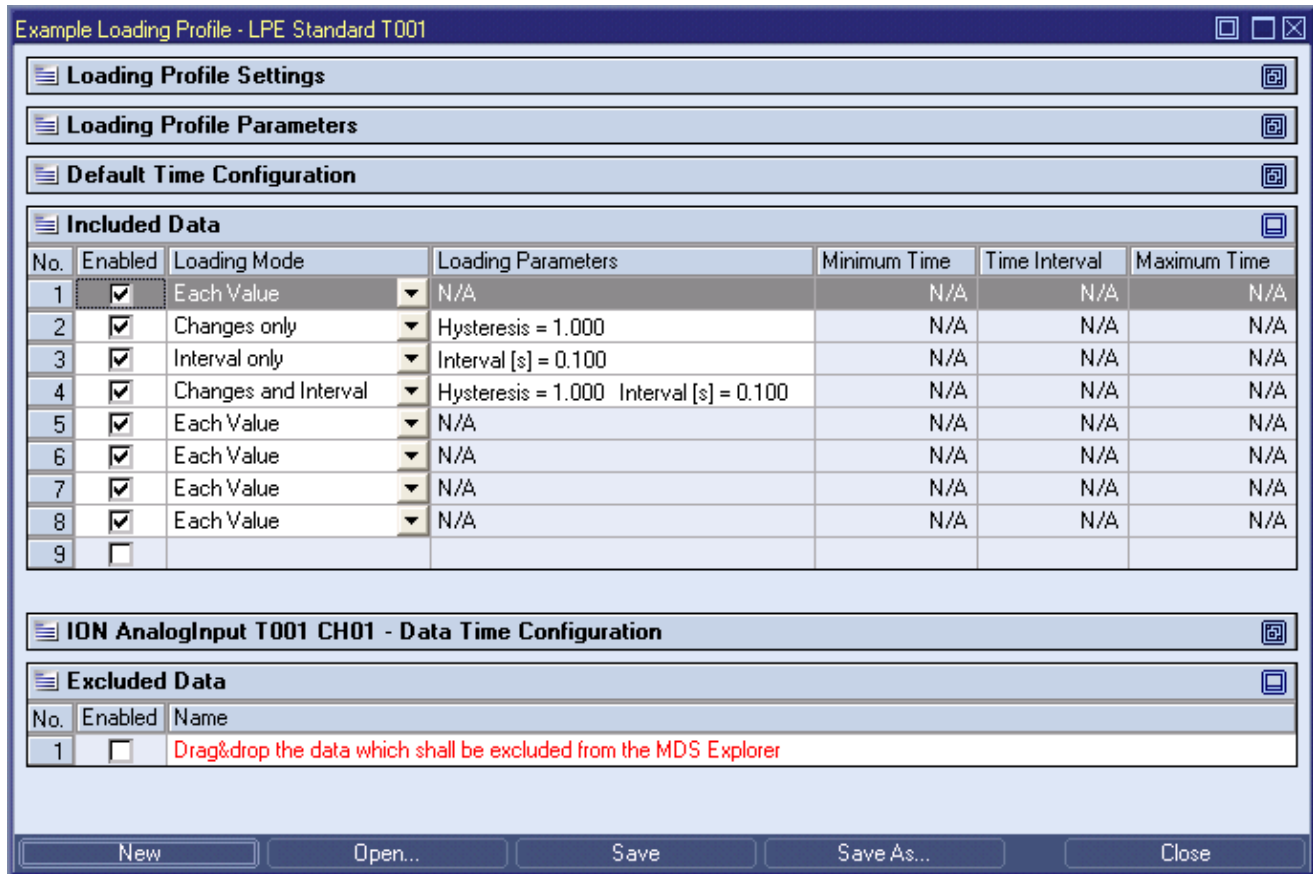


Figure 5: Example of a **LPE Standard T001**

Each control of the **LPE Standard T001** has a defined task and provides certain functionalities. The following major controls are provided by the **LPE Standard T001**:

- Loading Profile Settings Table
- Loading Profile Parameters Table
- Default Time Configuration Table
- Included Data Table
- Data Time Configuration Table
- Excluded Data Table
- Menu Bar
- Dropping of Items

2.3.3.2 Loading Profile Settings Table

The standard **Loading Profile Settings** table is being used by the **LPE Standard T001** (see point 2.3.2.2).

2.3.3.3 Loading Profile Parameters Table

The **Loading Profile Parameters** table contains all of the profile-dependent parameters which can be configured within a Loading Profile:

Parameter	Description
Data Filter	allows to switch between the available data filters
Time Filter	allows to switch between the available time filters

Data Filter

Data Filter	Description
None	When the data filter is set to "None", all configurations from the Included Data and Excluded Data tables are ignored when offline data is being loaded.
Use included Data List	When the data filter is set to "Use included Data List", only the data which are configured within the Included Data table are loaded as offline data and all data configurations from the Excluded Data table are ignored when offline data is being loaded.
Use excluded Data List	When the data filter is set to "Use excluded Data List", all data except the data which are configured within the Excluded Data table are loaded as offline data and all data configurations from the Included Data table are ignored when offline data is being loaded.

Time Filter

Time Filter	Description
Use default Times	When the time filter is set to "Use default Times", the time configurations from the Default Time Configuration table are used when offline data is being loaded and all time configurations from the Included Data table are ignored when offline data is being loaded.
Use individual Times	When the time filter is set to "Use individual Times", the time configurations from the Included Data table are used when offline data is being loaded and the time configurations from the Default Time Configuration table are ignored when offline data is being loaded.

2.3.3.4 Default Time Configuration Table

The **Default Time Configuration** table contains the default time configuration which can be configured within a Loading Profile:

Parameter	Description
Time Input Mode	allows to switch between the available time input modes
Time Domain	allows to switch between the available time domains
Minimum Time Format	allows to switch between the available input formats for the minimum time
Minimum Time Value	allows to enter the minimum time of the data which shall be loaded
Time Interval Format	allows to switch between the available input formats of the time interval
Time Interval Value	allows to enter the time interval of the data which shall be loaded
Maximum Time Format	allows to switch between the available input formats for the maximum time
Maximum Time Value	allows to enter the maximum time of the data which shall be loaded

Time Input Mode

Time Input Mode	Description
Minimum Time and Time Interval	In this time input mode, the specified Minimum Time Value and Time Interval Value parameters are used when offline data is being loaded.
Minimum Time and Maximum Time	In this time input mode, the specified Minimum Time Value and Maximum Time Value parameters are used when offline data is being loaded.
Time Interval and Maximum Time	In this time input mode, the specified Time Interval Value and Maximum Time Value parameters are used when offline data is being loaded.

Time Domain

Time Domain	Description
Absolute Times	When the time domain is set to "Absolute Times", the Minimum Time Value and Maximum Time Value rows expect the user input as absolute times.
Relative Times	When the time domain is set to "Relative Times", the Minimum Time Value and Maximum Time Value rows expect the user input as relative times.

2.3.3.5 Included Data Table

The **Included Data** table contains all of the data which shall be included when offline data is being loaded:

Column	Description
No.	contains the row number
Enabled	specifies whether the configuration within this row shall be considered when offline data is being loaded or not
Name	contains the name of the data
Loading Mode	contains the loading mode of the data
Loading Parameters	contains the loading parameters
Minimum Time	contains the configured minimum time
Time Interval	contains the configured time interval
Maximum Time	contains the configured maximum time

The user is able to highlight a complete row (or multiple rows) and to delete them via the context menu (**Re-move** context menu item) and/or via the keyboard (key).

A highlighted row (or multiple rows) can be copied/cut/pasted to another row of the **Included Data** table of the current or any other **Loading Profile Editor** via mechanisms of the context menu (**Copy**, **Cut** and **Paste** context menu items) and/or via the keyboard (<Ctrl+C>, <Ctrl+X> and <Ctrl+V> keys).

Any data which is copied from the **Included Data** table of a Loading Profile can be copied to the **Included Data** and **Excluded Data** tables of other Loading Profiles as well as to the **Data** table of Storage Profiles.

The last row of the **Included Data** table always is an empty row (except the **Name** cell, see below) and therefore it allows the user to add a data by typing another name into the **Name** field of this last row. All other cells of the last row are empty and disabled as long as the **Name** field is empty. Whenever a new name has been entered into the **Name** field, all other columns are set to their default values and another new, empty row is added to the **Included Data** table automatically.

Via Drag&Drop, any existing data can be dropped onto the **Included Data** table. Any dropped data is added to the **Included Data** table automatically like if its name would have entered manually.

Whenever a row of the **Included Data** table is being selected, the **Data Time Configuration** table is filled with the time configuration of the selected data and can be used in order to change the time configuration of the selected data. Any change within the **Data Time Configuration** table is taken over by the **Minimum Time**, **Time Interval** and **Maximum Time** cells of the **Included Data** table immediately.

The data names must be unique among all enabled rows when the user wants to save the Loading Profile. The according check is done before the actual saving is started.

Name

New data can be added to the **Included Data** table either via Drag&Drop from the online or offline data section of the **MDS Explorer** or through typing of its name into the edit box directly.

Loading Mode

Loading Mode	Description
Each Value	In this loading mode, each value from the offline data file of a data is put into the according buffer of the data.
Changes only	In this loading mode, a value from the offline data file of a data is put into the according buffer of the data only in case the difference in between the value from the offline data file and the last value from the buffer is bigger than the specified hysteresis.
Changes and Interval	In this loading mode, a value from the offline data file of a data is put into the according buffer of the data in case the difference in between the value from the offline data file and the last value from the buffer is bigger than the specified hysteresis. In addition, the last known value from the offline data file is put into the buffer each amount of time which is specified as interval.
Interval only	In this loading mode, a value from the offline data file of a data is never put into the according buffer of the data directly. Instead, the last known value from the offline data file is put into the buffer each amount of time which is specified as interval.

Minimum Time

In case the time input mode is "Minimum Time and Time Interval" or "Minimum Time and Maximum Time", the **Minimum Time** cell contains the configured minimum time.

Time Interval

In case the time input mode is "Minimum Time and Time Interval" or "Time Interval and Maximum Time", the **Time Interval** cell contains the configured time interval.

Maximum Time

In case the time input mode is "Minimum Time and Maximum Time" or "Time Interval and Maximum Time", the **Maximum Time** cell contains the configured maximum time.

2.3.3.6 Data Time Configuration Table

The **Data Time Configuration** table contains the time configuration of the data which is currently being selected within the **Included Data** table:

Parameter	Description
Time Input Mode	allows to switch between the available time input modes
Time Domain	allows to switch between the available time domains
Minimum Time Format	allows to switch between the available input formats for the minimum time
Minimum Time Value	allows to enter the minimum time of the data which shall be loaded
Time Interval Format	allows to switch between the available input formats of the time interval
Time Interval Value	allows to enter the time interval of the data which shall be loaded
Maximum Time Format	allows to switch between the available input formats for the maximum time
Maximum Time Value	allows to enter the maximum time of the of the data which shall be loaded

Time Input Mode

Time Input Mode	Description
Default	In this time input mode, the time configuration from the Default Time Configuration table is used when offline data is being loaded.
Minimum Time and Time Interval	In this time input mode, the specified Minimum Time Value and Time Interval Value parameters are used when offline data is being loaded.
Minimum Time and Maximum Time	In this time input mode, the specified Minimum Time Value and Maximum Time Value parameters are used when offline data is being loaded.
Time Interval and Maximum Time	In this time input mode, the specified Time Interval Value and Maximum Time Value parameters are used when offline data is being loaded.

Time Domain

Time Domain	Description
Absolute Times	When the time domain is set to "Absolute Times", the Minimum Time Value and Maximum Time Value rows expect the user input as absolute times.
Relative Times	When the time domain is set to "Relative Times", the Minimum Time Value and Maximum Time Value rows expect the user input as relative times.

2.3.3.7 Excluded Data Table

The **Excluded Data** table contains all of the data which shall be included when offline data is being loaded:

Column	Description
No.	contains the row number
Enabled	specifies whether the configuration within this row shall be considered when offline data is being loaded or not
Name	contains the name of the data

The user is able to highlight a complete row (or multiple rows) and to delete them via the context menu (**Remove** context menu item) and/or via the keyboard (key).

A highlighted row (or multiple rows) can be copied/cut/pasted to another row of the **Excluded Data** table of the current or any other **Loading Profile Editor** via mechanisms of the context menu (**Copy**, **Cut** and **Paste** context menu items) and/or via the keyboard (<Ctrl+C>, <Ctrl+X> and <Ctrl+V> keys).

Any data which is copied from the **Excluded Data** table of a Loading Profile can be copied to the **Included Data** and **Excluded Data** tables of other Loading Profiles as well as to the **Data** table of Storage Profiles.

The last row of the **Excluded Data** table always is an empty row (except the **Name** cell, see below) and therefore it allows the user to add a data by typing another name into the **Name** field of this last row. All other cells of the last row are empty and disabled as long as the **Name** field is empty. Whenever a new name has been entered into the **Name** field, another new, empty row is added to the **Excluded Data** table automatically.

Via Drag&Drop, any existing data can be dropped onto the **Excluded Data** table. Any dropped data is added to the **Excluded Data** table automatically like if its name would have entered manually.

Name

New data can be added to the **Excluded Data** table either via Drag&Drop from the online or offline data section of the **MDS Explorer** or through typing of its name into the edit box directly.

As any data can not be excluded twice, each entry within the **Name** column must be unique.

2.3.3.8 Menu Bar

The standard **Menu Bar** is being used by the **LPE Standard T001** (see point 2.3.2.3).

2.3.3.9 Dropping of Items

Dropped Item	Description
Loading Profile File Branches of type "LPF Standard T001"	opens the dropped Loading Profile
Online Data Branches in case the LPE Standard T001 is not empty	adds the dropped online data to the Included Data table <i>or</i> adds the dropped online data to the Excluded Data table
Offline Data Branches in case the LPE Standard T001 is not empty	adds the dropped offline data to the Included Data table <i>or</i> adds the dropped offline data to the Excluded Data table

2.4 Offline Data Loaders

2.4.1 Overview

Offline Data Loaders are used in order to load the data, which has been stored by executed Storage Profiles, from their storage location (e.g. from the file system or from a database) and back into the **X-Tools Server**.

Offline Data Loaders do not create any Configuration Files but are used exclusively for loading of data from their storage locations.

For faster and more convenient loading of desired data, **Offline Data Loaders** support to apply Loading Profiles during the loading operation. The detailed interactions between Loading Profiles and **Offline Data Loaders** as well as the possible parameters for Loading Profiles are dependent to the used storage format and are discussed within the documentation of each **Loading Profile Editor** and each **Offline Data Loader**.

Offline Data Loaders are known and accessed exclusively by the **X-Tools Client**, the **X-Tools Server** has no knowledge about **Storage Data Editors** at all. However, the **X-Tools Server** and its **Storage Process Modules** are used by **Offline Data Loaders** for all loading operations which are specified by the user, because **Offline Data Loaders** do not have any direct access to stored data at the **X-Tools Server**.

2.4.2 ODL Standard T001

2.4.2.1 Overview

The **ODL Standard T001** is used in order to load data from offline data files of the following types into the memory buffers of the **X-Tools Server**:

- X-Tools Offline Data Files (*.sdf.xts)
- CMS2000 Database Files (*.cmsdb)
- WAVE Files (*.wav)
- CSV Files (*.csv)

The following screenshot shows an example of an **ODL Standard T001**:

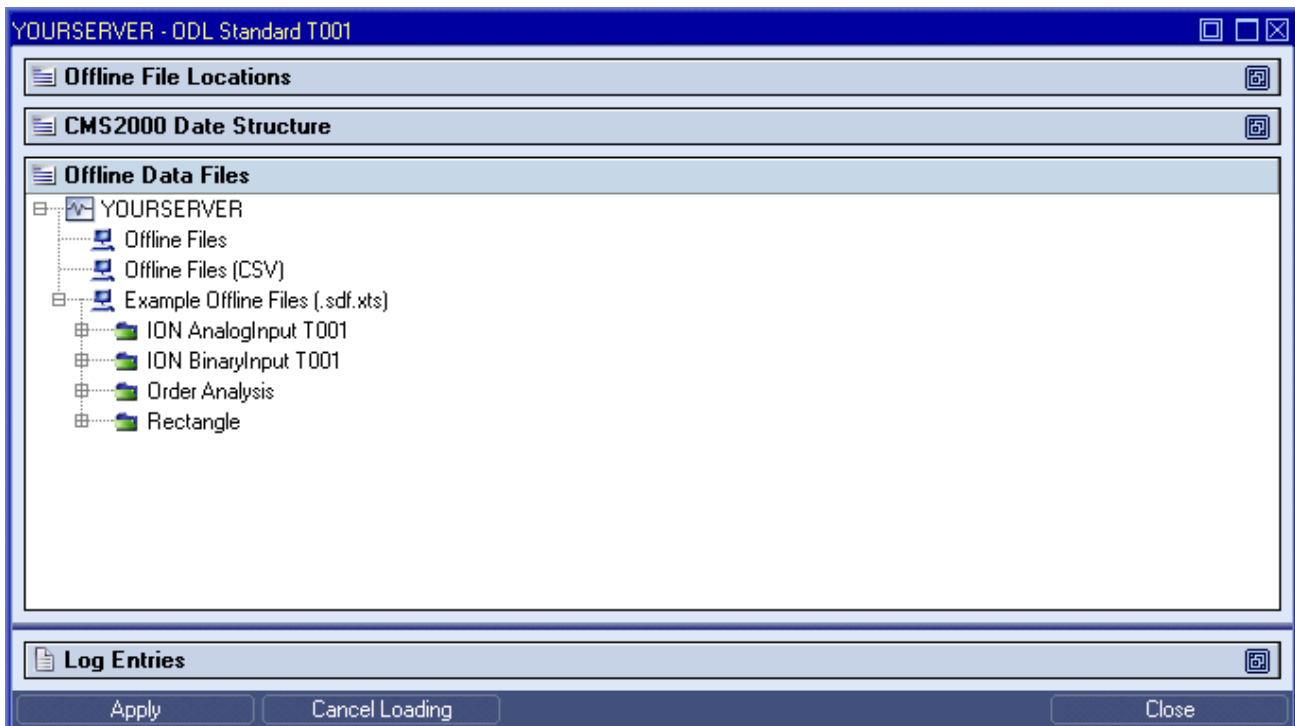


Figure 6: Example of an **ODL Standard T001**

Each control of the **ODL Standard T001** has a defined task and provides certain functionalities. The following major controls are provided by the **ODL Standard T001**:

- Offline File Locations Table
- CMS2000 Date Structure Table
- Offline Data Files Tree
- Log Entries Table
- Menu Bar
- Dropping of Items
- Advanced Append Dialog
- Advanced Overwrite Dialog
- Advanced Export Dialog

2.4.2.2 Offline File Locations Table

The **Offline File Locations** table contains all of the currently defined offline file locations:

Parameter	Description
No.	contains the row number
Symbolic Name	contains the symbolic name of the location
Path	contains the path to the location at its target server
Location Type	contains the type of the location

The information within the **Offline File Locations** table can not be edited by the user. In order to add/remove an offline file location, the according operations from the context menu of the **Offline Data Files** tree are being used.

2.4.2.3 CMS2000 Date Structure Table

The **CMS2000 Date Structure** table is used in order to specify the depth of the date structure which shall be shown for CMS2000 files:

Column	Description
No.	contains the row number
Content	contains "Configuration" in row number 1 and "Example" in row number 2
Year	defines whether the year shall be shown
\	defines whether a directory split shall be made between year and month
Month	defines whether the month shall be shown
\	defines whether a directory split shall be made between month and day
Day	defines whether the day shall be shown

Changes to the **CMS2000 Date Structure** table are being taken over after the **Apply** menu button has been pressed. The **ODL Standard T001** can load databases which have been created by V 1.x or V 2.x of the SIPLUS CMS2000 system.

2.4.2.4 Offline Data Files Tree

2.4.2.4.1 Overview

The **Offline Data Files** tree displays all of the items which are available for the **ODL Standard T001**.

Each branch of the **Offline Data Files** tree has a defined task and provides certain functionalities. The following major branches are provided by the **Offline Data Files** tree:

- Server Branch
- File Location Branch
- Offline Data Directory Branch

2.4.2.4.2 Server Branch

The one and only **Server Branch** provides all of the offline data files which are available at the **X-Tools Server**.

The following specific context menu item is provided:

Context Menu Item	Description
Add Location...	opens the Add Location dialog and adds a new offline data file location afterwards

2.4.2.4.3 File Location Branch

Each **File Location Branch** provides all of the offline data files and directories which are available from the directory to which the offline data file location points.

The following specific context menu item is provided:

Context Menu Item	Description
Remove Location	removes the chosen file location

2.4.2.4.4 Offline Data Directory Branch

Each **Offline Data Directory Branch** provides all of the offline data directories and offline data files which are available from the directory to which it points. The tree of shown offline data directories and offline data files is updated automatically whenever an offline data directory or offline data file at the disk is added/deleted/modified.

The following specific context menu items are provided:

Context Menu Item	Description
Append	appends the data of the selected items to the already present offline data
Overwrite	overwrites the already present offline data with the data from the selected items
Export	exports the data from the selected items
Advanced Append...	opens the Advanced Append dialog and appends the data from the selected items to the already present offline data with the chosen options afterwards
Advanced Overwrite...	opens the Advanced Overwrite dialog and overwrites the already present offline data with the data from the selected items according to the chosen options afterwards
Advanced Export...	opens the Advanced Export dialog and exports the data from the selected items according to the chosen options afterwards
Delete	deletes the selected items

While the appending, overwriting or exporting of the offline data is going on, the **Loading Progress** or **Export Progress** dialog is being displayed. The **Cancel** button can be used in order to cancel any ongoing loading or export operation.

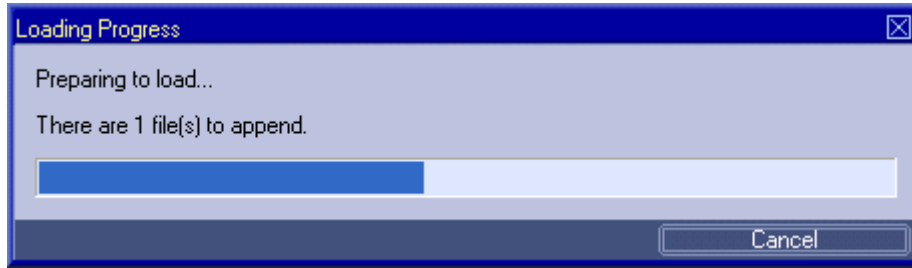


Figure 7: Loading Progress Dialog

2.4.2.5 Log Entries Table

The **Log Entries** table contains all of the events which apply to the loading of offline data:

Parameter	Description
No.	contains the row number
Date and Time	contains the date and time of the entry
Entry	contains the text of the entry
Source Module	contains the source module of the entry
Source Machine	contains the source machine of the entry
Source User	contains the source user of the entry
Priority Class	contains the priority class of the entry
Execution ID	contains the execution ID of the entry

2.4.2.6 Menu Bar

Menu Button	Description
Cancel Loading	This button cancels the currently ongoing offline data loading. In case there are additional requests for loading of offline data being present within the internal execution queue of the X-Tools Server , also all of these additional requests are being cancelled. All of the already loaded parts of offline data stay in the memory of the server and is available via the MDS Explorer .
Close	This button closes the ODL Standard T001 . A possibly ongoing offline data loading is not affected by closing of the ODL Standard T001 and is continued until all data is loaded.

2.4.2.7 Dropping of Items

Dropped Item	Description
Server Branches	starts the ODL Standard T001 with the contents of the dropped X-Tools Server

2.4.2.8 Add Location Dialog

2.4.2.8.1 Overview

The following screenshot shows an example of an **Add Location** dialog:

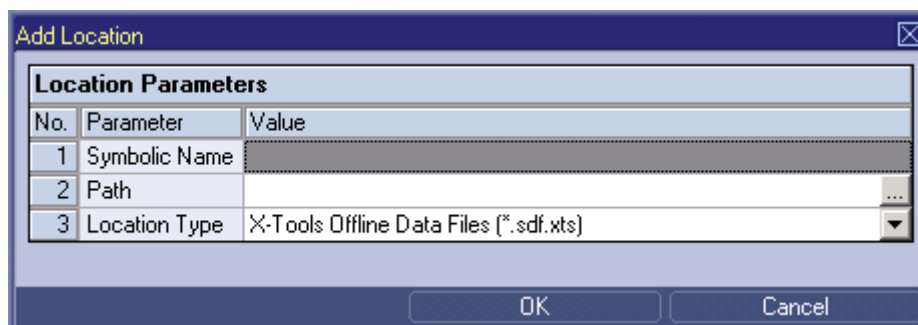


Figure 8: Example of an Add Location Dialog

2.4.2.8.2 Location Parameters Table

The **Location Parameters** table contains the parameters of the location which shall be added:

Parameter	Description
Symbolic Name	contains the symbolic name of the location
Path	contains the path of the location at the disk
Location Type	contains the desired target file type of the location

Symbolic Name

This is the name of the location which is shown by **X-Tools**. At different places it can be used in order to reference to an already existing location.

Location Type

Location Type	Description
X-Tools Offline Data Files (*.sdf.xts)	the new location shall show only offline data files which have been stored by X-Tools
CMS2000 Database Files (*.cmsdb)	the new location shall show only offline data files which match the CMS2000 database format
WAVE Files (*.wav)	the new location shall show only offline data files which match the WAVE format
CSV Files (*.csv)	the new location shall show only offline data files which match the CSV format

2.4.2.9 Advanced Append Dialog

2.4.2.9.1 Overview

The following screenshot shows an example of an **Advanced Append** dialog:

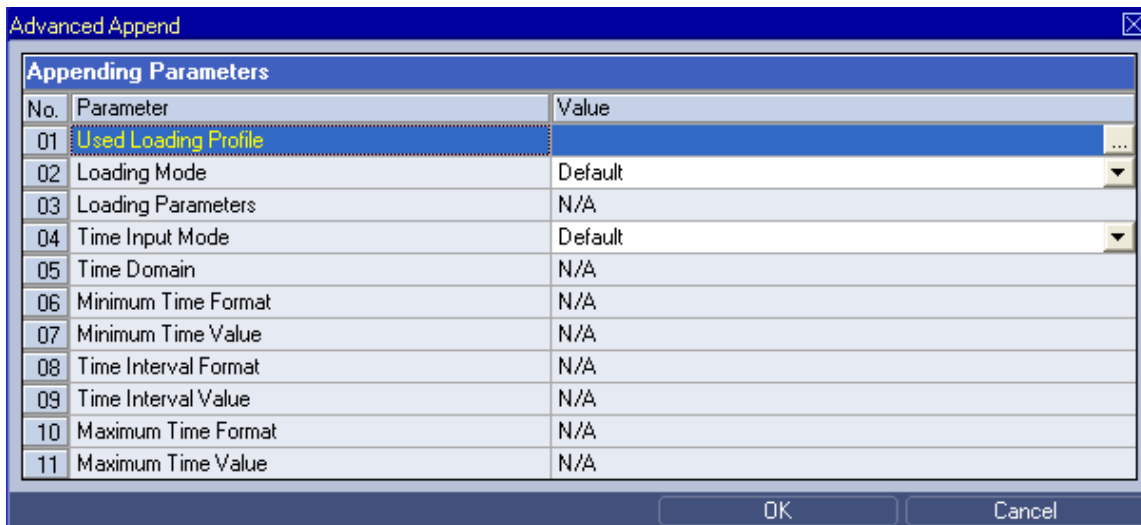


Figure 9: Example of an **Advanced Append** Dialog

2.4.2.9.2 Appending Parameters Table

The **Appending Parameters** table contains parameters which shall be applied when the selected offline data files are being loaded:

Parameter	Description
Used Loading Profile	displays the currently chosen Loading Profile; a double click onto this control opens the Select File dialog in order to choose another Loading Profile
Loading Mode	contains the loading mode which shall be applied
Loading Parameters	contains the loading parameters which shall be applied
Time Input Mode	allows to switch between the available time input modes
Time Domain	allows to switch between the available time domains
Minimum Time Format	allows to switch between the available input formats for the minimum time
Minimum Time Value	allows to enter the minimum time of the data which shall be loaded
Time Interval Format	allows to switch between the available input formats of the time interval
Time Interval Value	allows to enter the time interval of the data which shall be loaded
Maximum Time Format	allows to switch between the available input formats for the maximum time
Maximum Time Value	allows to enter the maximum time of the of the data which shall be loaded

Used Loading Profile

In case the user enters the path to a valid Loading Profile into this control, the **ODL Standard T001** uses the specified settings from the Loading Profile and loads the data from the offline data files at the disk accordingly. When no Loading Profile is being specified, all of the currently selected offline data files are being loaded.

Loading Mode

Loading Mode	Description
Default	In this loading mode, the ODL Standard T001 uses the specified values from the provided Loading Profile in order to determine the values of the data which shall be loaded from the selected offline data files. In case there is no Loading Profile provided, all values of all selected offline data files are being loaded.
Each Value	In this loading mode, each value from the offline data file of a data is put into the according buffer of the data.
Changes only	In this loading mode, a value from the offline data file of a data is put into the according buffer of the data only in case the difference in between the value from the offline data file and the last value from the buffer is bigger than the specified hysteresis.
Changes and Interval	In this loading mode, a value from the offline data file of a data is put into the according buffer of the data in case the difference in between the value from the offline data file and the last value from the buffer is bigger than the specified hysteresis. In addition, the last known value from the offline data file is put into the buffer each amount of time which is specified as interval.
Interval only	In this loading mode, a value from the offline data file of a data is never put into the according buffer of the data directly. Instead, the last known value from the offline data file is put into the buffer each amount of time which is specified as interval.

Time Input Mode

Time Input Mode	Description
Default	In this time input mode, the ODL Standard T001 uses the specified values from the provided Loading Profile in order to determine the period of the data which shall be loaded from the selected offline data files. In case there is no Loading Profile provided or in case it does not contain information about the to-be-used minimum and maximum times, all selected offline data files are loaded from their beginning until their end.
Minimum Time and Time Interval	In this time input mode, the ODL Standard T001 uses the specified Minimum Time Value and Time Interval Value parameters in order to determine the period of the data which shall be loaded from the selected offline data files.
Minimum Time and Maximum Time	In this time input mode, the ODL Standard T001 uses the specified Minimum Time Value and Maximum Time Value parameters in order to determine the period of the data which shall be loaded from the selected offline data files.
Time Interval and Maximum Time	In this time input mode, the ODL Standard T001 uses the specified Time Interval Value and Maximum Time Value parameters in order to determine the period of data which shall be loaded from the selected offline data files.

Time Domain

Time Domain	Description
Absolute Times	When the time domain is set to "Absolute Times", the Minimum Time Value and Maximum Time Value rows expect the user input as absolute times.
Relative Times	When the time domain is set to "Relative Times", the Minimum Time Value and Maximum Time Value rows expect the user input as relative times.

2.4.2.10 Advanced Overwrite Dialog

2.4.2.10.1 Overview

The following screenshot shows an example of an **Advanced Overwrite** dialog:

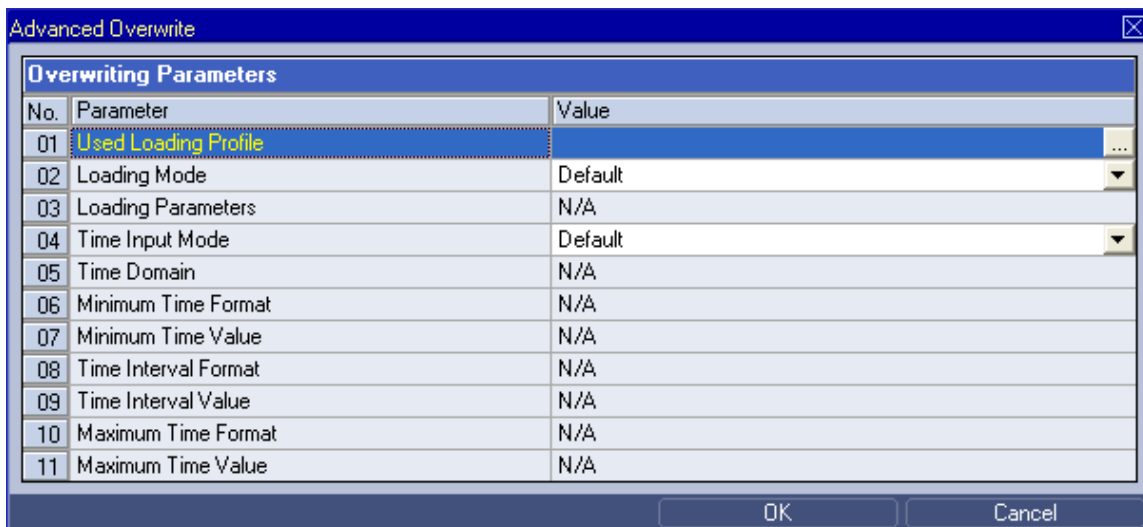


Figure 10: Example of an **Advanced Overwrite** Dialog

The available configurations within the **Advanced Overwrite** dialog match the available configurations within the **Advanced Append** dialog (see point 2.4.2.8).

2.4.2.11 Advanced Export Dialog

2.4.2.11.1 Overview

The following screenshot shows an example of an **Advanced Export** dialog:

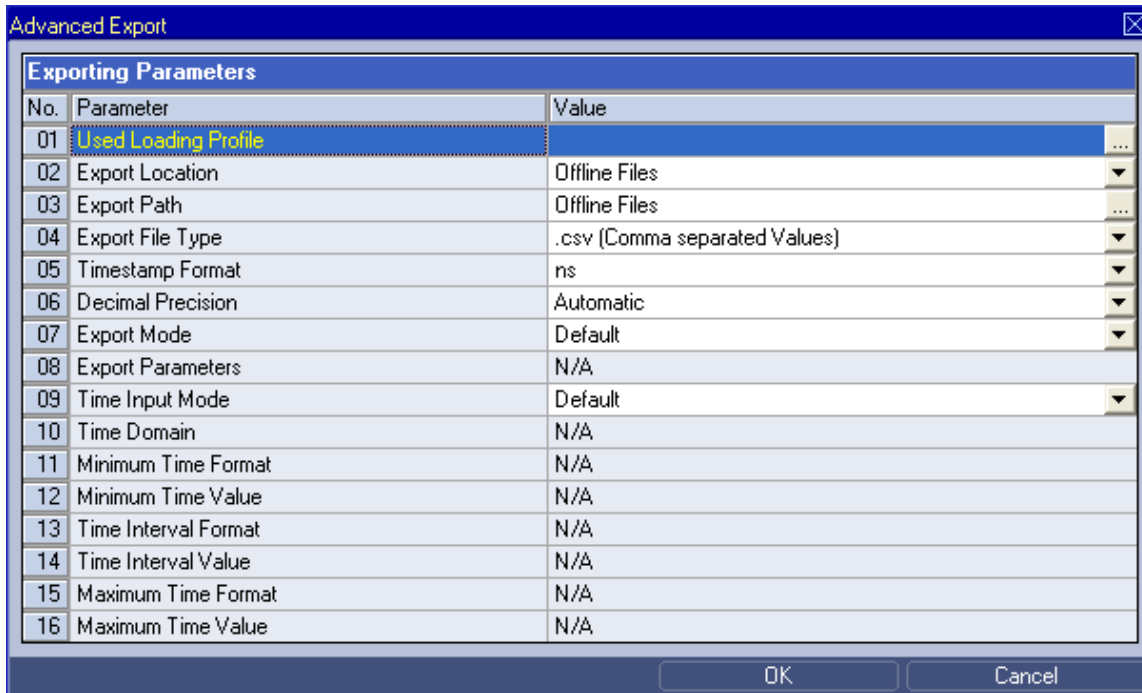


Figure 11: Example of an **Advanced Export** Dialog

2.4.2.11.2 Exporting Parameters Table

The **Exporting Parameters** table contains parameters which shall be applied when the selected offline data is being exported:

Parameter	Description
Used Loading Profile	displays the currently chosen Loading Profile; a double click onto this control opens the Select File dialog in order to choose another Loading Profile
Export Location	allows to switch between the already defined storage (export) locations and to define additional storage (export) locations
Export Path	allows to choose the desired path below the specified storage (export) location
Export File Type	allows to switch between the available export file types
Timestamp Format	allows to switch between the available timestamp formats
Decimal Precision	allows to switch between the available decimal precisions
Export Mode	contains the export mode which shall be applied
Export Parameters	contains the export parameters which shall be applied
Time Input Mode	allows to switch between the available time input modes
Time Domain	allows to switch between the available time domains
Minimum Time Format	allows to switch between the available input formats for the minimum time
Minimum Time Value	allows to enter the minimum time of the data which shall be loaded
Time Interval Format	allows to switch between the available input formats of the time interval
Time Interval Value	allows to enter the time interval of the data which shall be loaded
Maximum Time Format	allows to switch between the available input formats for the maximum time
Maximum Time Value	allows to enter the maximum time of the of the data which shall be loaded

Used Loading Profile

In case the user enters the path to a valid Loading Profile into this control, the **ODL** uses the specified settings from the Loading Profile and exports the data from the offline data files at the disk accordingly. When no Loading Profile is being specified, the data out of all currently selected offline data files is being exported.

Export Location

The desired export location for the data can be chosen by selecting of an already defined storage location via the provided combo box, which contains the symbolic names of all of the currently known root data locations of the source **X-Tools Server** of the selected data.

The last entry of the combo box is “...” and opens the **Add Location** dialog when it is being chosen. When a new storage location has been defined via the **Add Location** dialog, it is added to the **Export Location** combo box automatically and automatically becomes the currently selected one.

Export Path

The **Export Path** contains the name of the used location as well as the following path of directories.

Export File Type

Export File Type	Description
.csv (Comma separated Values)	When the export file type is set to “.csv (Comma separated Values)”, the selected offline data files are being exported to .csv compatible files.
.dat (DIAdem Data Format)	When the export file type is set to “.dat (DIAdem Data Format)”, the selected offline data are being exported to .dat compatible files.

Timestamp Format

Timestamp Format	Description
ns	When the timestamp format is set to “ns”, timestamps are written into the exported file as ns since 1970-01-01 00:00:00 GMT (in case of absolute timestamps) or as ns since 000000 00:00:00 (in case of relative timestamps).
Date + Time + ns (GMT)	When the timestamp format is set to “Date + Time + ns (GMT)”, timestamps are written into the exported file as date, time and ns in GMT (in case of absolute timestamps) or as time and ns (in case of relative timestamps).
Date + Time + ns (Local Time)	When the timestamp format is set to “Date + Time + ns (Local Time)”, timestamps are written into the exported file as date, time and ns in local time (in case of absolute timestamps) or as time and ns (in case of relative timestamps).

Decimal Precision

Decimal Precision	Description
Automatic	When the decimal precision is set to “Automatic”, decimal values are written into the exported file with the maximal available accuracy of each value. Thus, the number of digits after the comma can vary in between the values within one line and in between the values of one data from line to line.
0, 3, 6, 9 or 12	When the decimal precision is set to “0”, “3”, “6”, “9” or “12”, decimal values are written into the exported file with the specified number of digits.

Export Mode

Export Mode	Description
Default	In this export mode, the ODL Standard T001 uses the specified values from the provided Loading Profile in order to determine the values of the data which shall be exported from the selected offline data files. In case there is no Loading Profile provided, all values of all selected offline data files are being exported.
Each Value	In this export mode, each value from the selected offline data files is being exported.
Changes only	In this export mode, a value from the selected offline data files is being exported only in case the difference in between the value from the offline data files and the last value which has been exported is bigger than the specified hysteresis.
Changes and Interval	In this export mode, a value from the selected offline data files is being exported in case the difference in between the value from the offline data files and the last value which has been exported is bigger than the specified hysteresis. In addition, the last known value from the offline data files is being exported each amount of time which is specified as interval.
Interval only	In this export mode, a value from the selected offline data files never is being exported directly. Instead, the last known value from the offline data files is being exported each amount of time which is specified as interval.

Export Parameter

Export Parameter	Description
N/A	This export parameter is relevant for the storage mode Each Value only and is being applied automatically in case this storage mode is being chosen.
Hysteresis	This export parameter allows specifying via edit box the hysteresis for to be stored values and is being applied automatically in case the storage mode Changes Only is being chosen.
Hysteresis and Interval	These export parameters allow to specify via edit box the hysteresis and the amount of time for the to be stored values and are being applied automatically in case the storage mode Changes and Interval is being chosen.
Interval	This export parameter allows specifying via edit box the amount of the time for to be stored values and is being applied automatically in case the storage mode Interval Only is being chosen.

Time Input Mode

Time Input Mode	Description
Default	In this time input mode, the full available time interval of the selected offline data files s being exported.
Minimum Time and Time Interval	In this time input mode, the time interval which is specified via the Minimum Time Value and Time Interval Value parameters is being exported.
Minimum Time and Maximum Time	In this time input mode, the time interval which is specified via the Minimum Time Value and Maximum Time Value parameters is being exported.
Time Interval and Maximum Time	In this time input mode, the time interval which is specified via the Time Interval Value and Maximum Time Value parameters is being exported.

Time Domains

Time Domain	Description
Absolute Times	When the time domain is set to "Absolute Times", the Minimum Time Value and Maximum Time Value rows expect the user input as absolute times.
Relative Times	When the time domain is set to "Relative Times", the Minimum Time Value and Maximum Time Value rows expect the user input as relative times.

3 Contact Information

Address

Siemens AG
I IA CE SE
Wuerzburger Strasse 121
90766 Fuerth
Germany

Internet

<http://www.siemens.com/siplus-cms>