

Using
SIMATIC Assessment Suite – Data Collector (SAS–DC)
alias
SIMATIC Diagnostic Tool (SDT)

Content

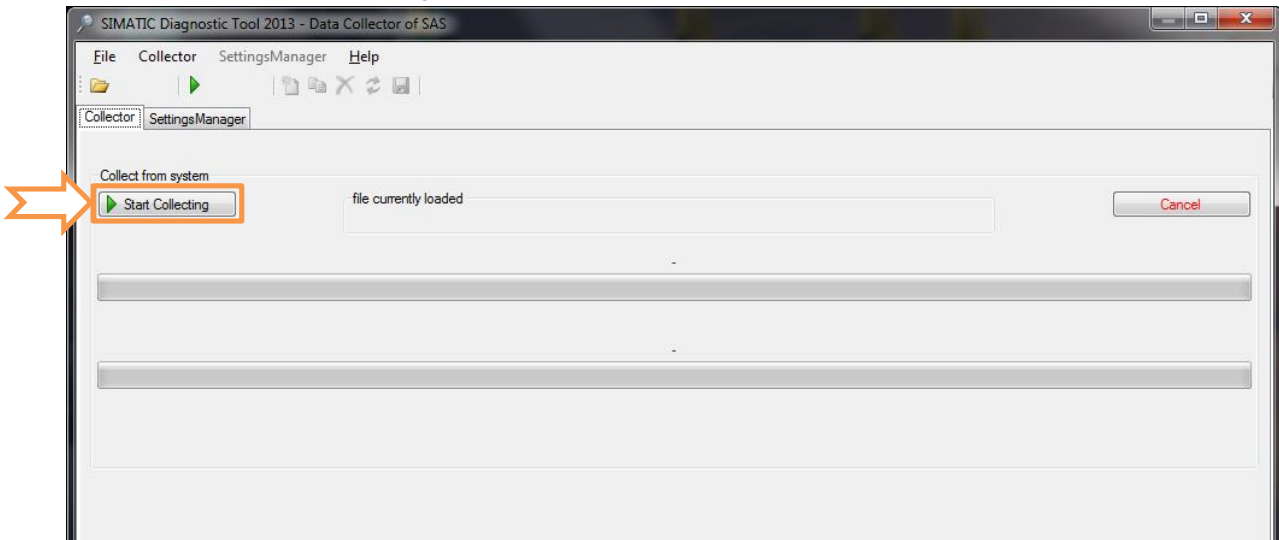
A	Instructions for local collection	2
B	Instructions for distributed collection	3
C	Instructions for STARTER / SCOUT diagnostic file collecting.....	7
D	Configure process memory dumps during runtime	9

! Please keep configuration files *localall.xml* and *diagsets.xml* up to date. See FAQ !

A Instructions for local collection

This collection mode will provide all known information from the local system. No special configuration needed.

1. Launch SDT....exe (Will “run as administrator” automatically)
2. Click “Start Collecting”

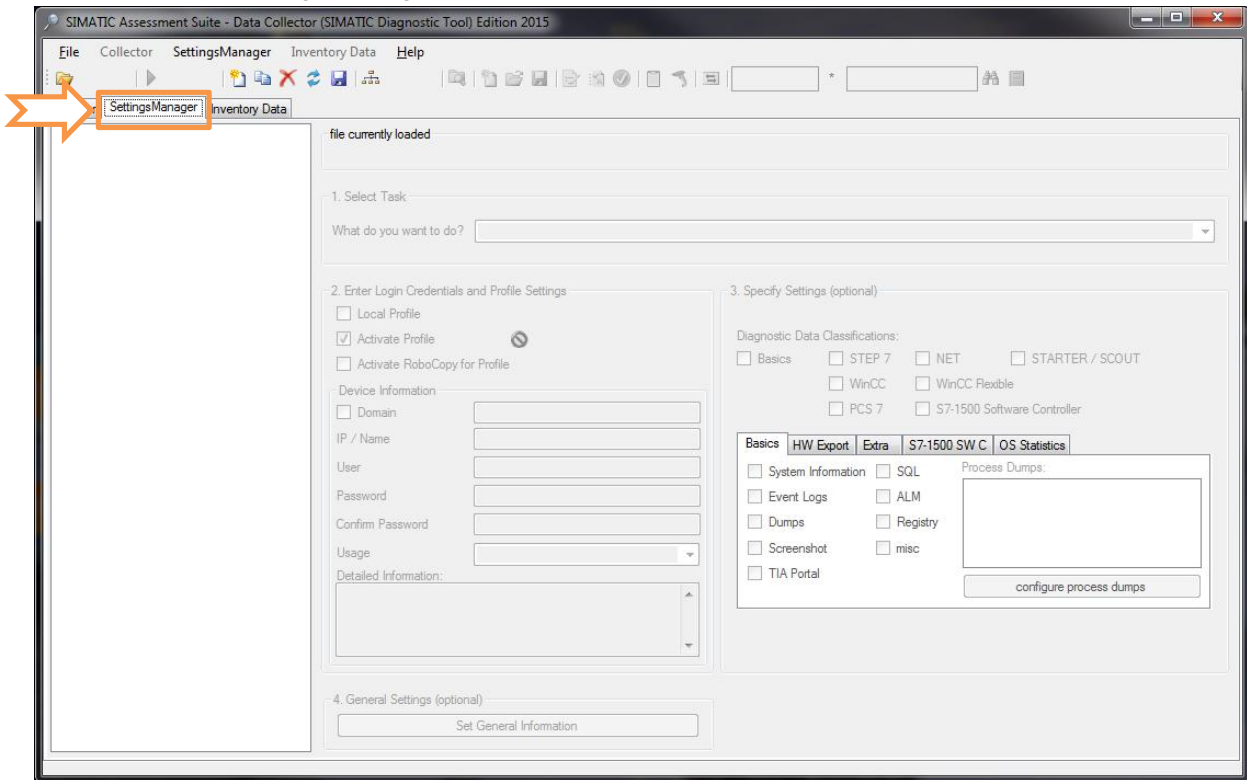


When collecting is finished a folder with an archive with all collected data will appear in tool directory.

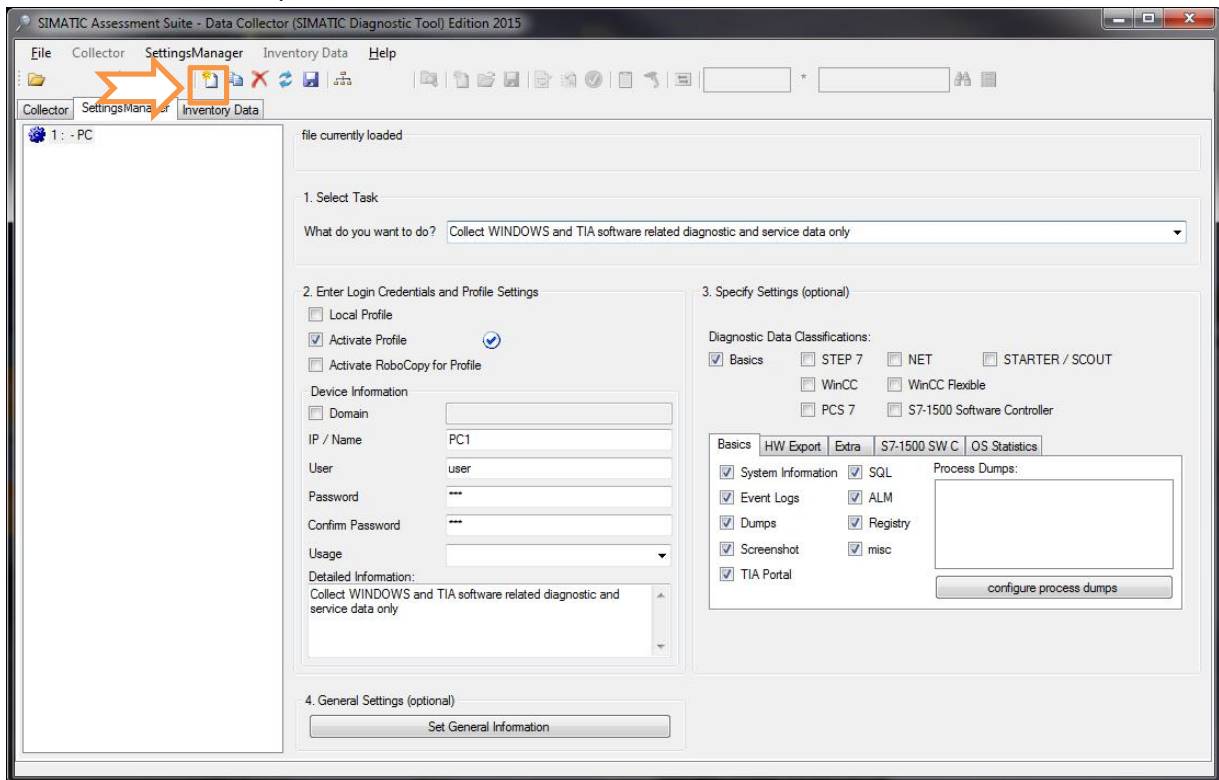
B Instructions for distributed collection

This collection mode will provide information from systems available within the network. Network devices are represented as profiles. Each profile can be configured separately.

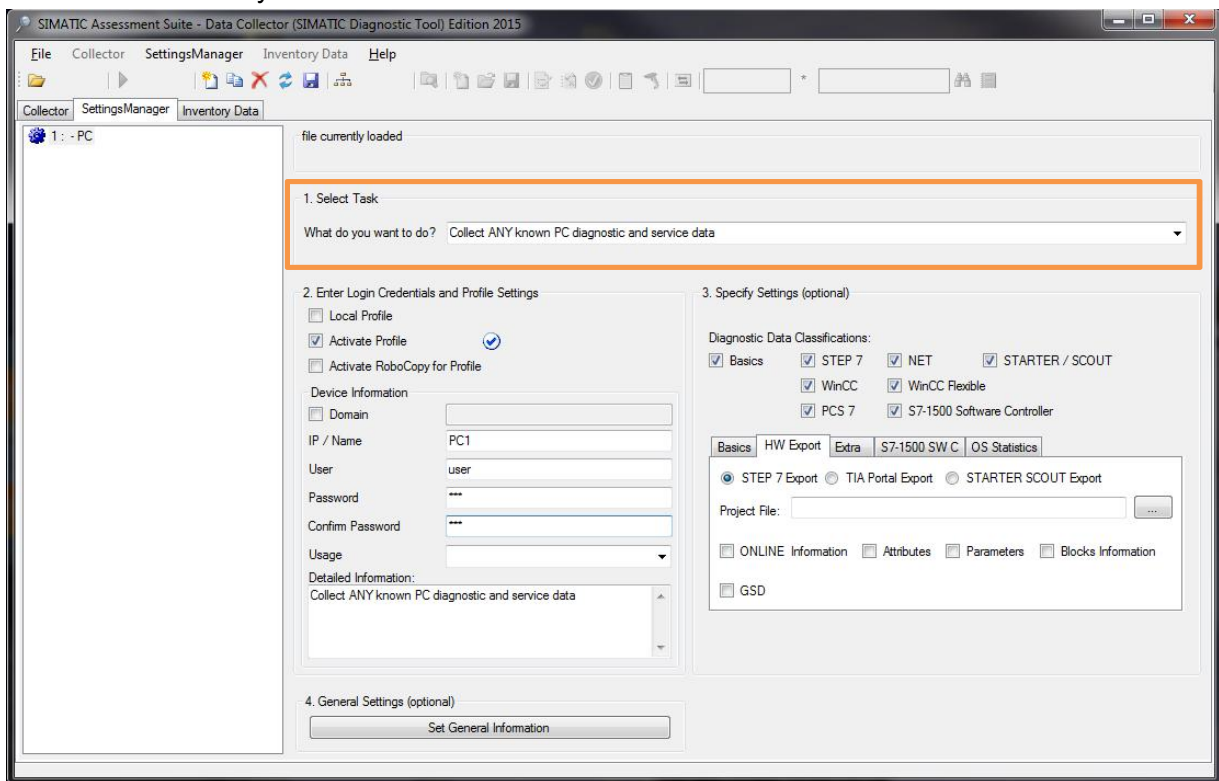
1. Launch SDT....exe (Will “run as administrator” automatically)
2. Select “SettingsManager” Tab



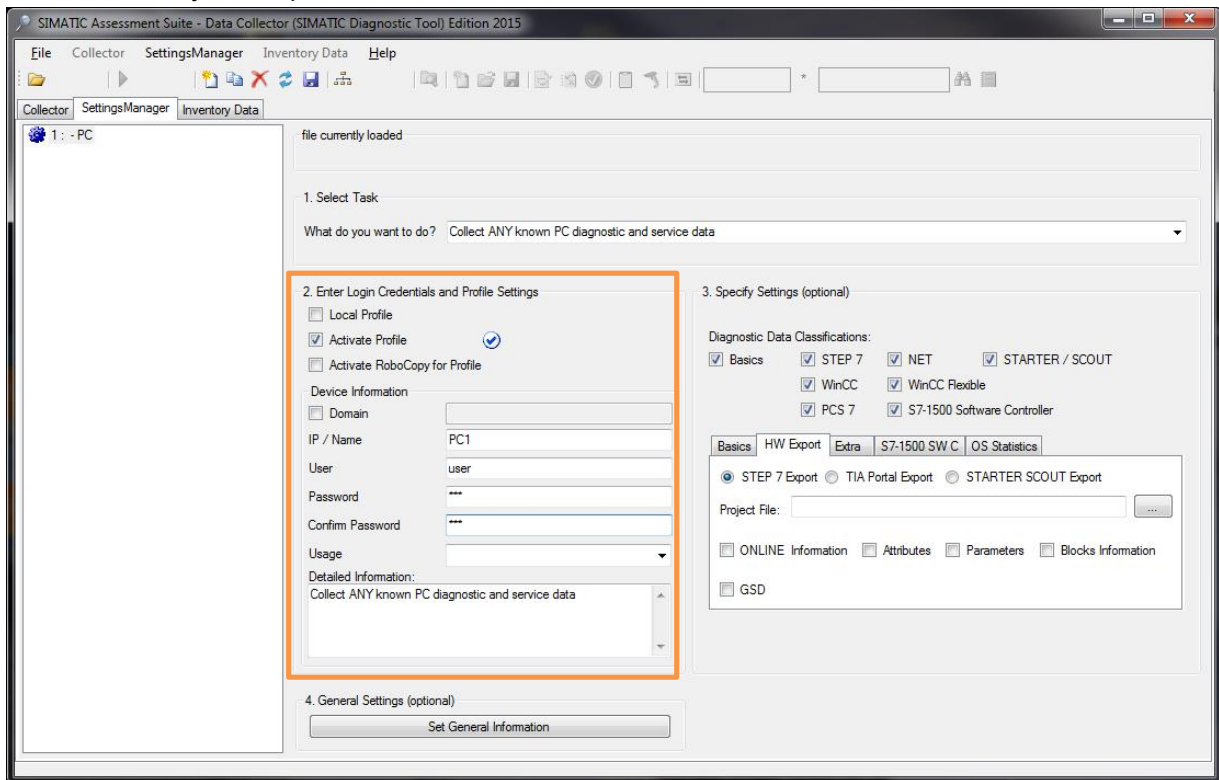
3. Create a new profile



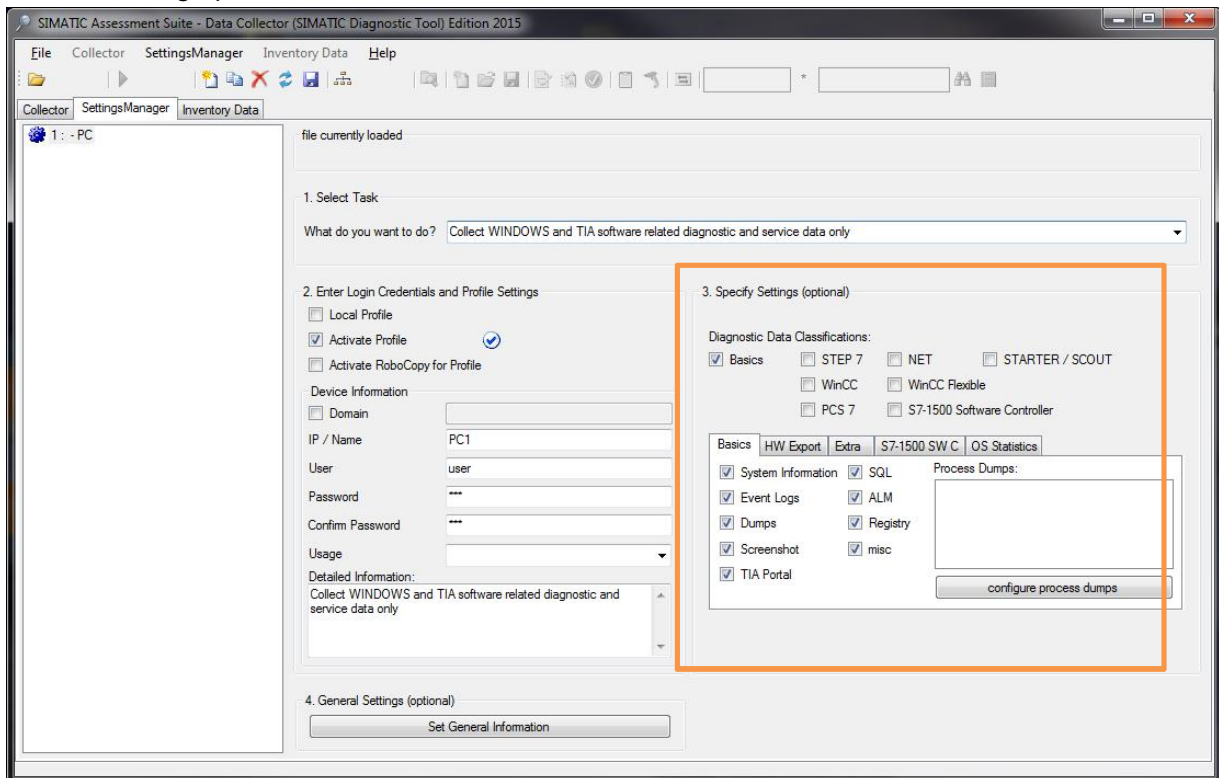
4. Select what you want to do



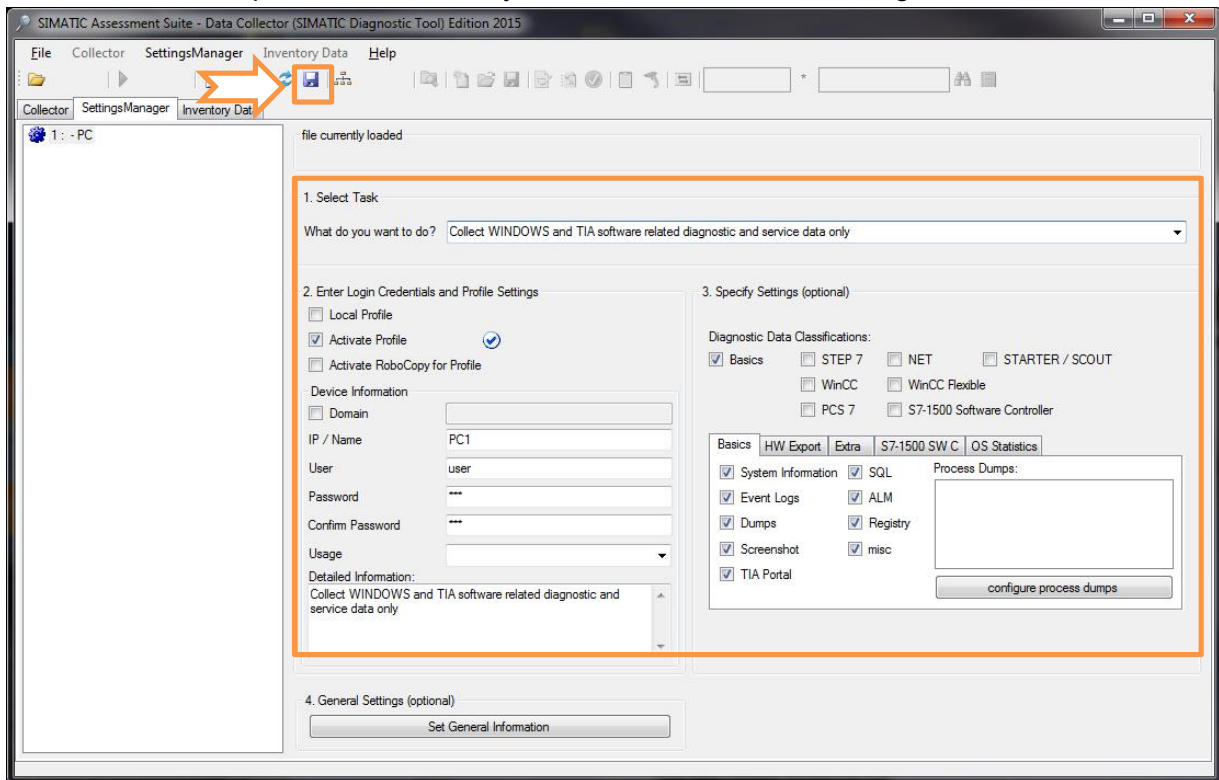
5. Enter system specific credentials



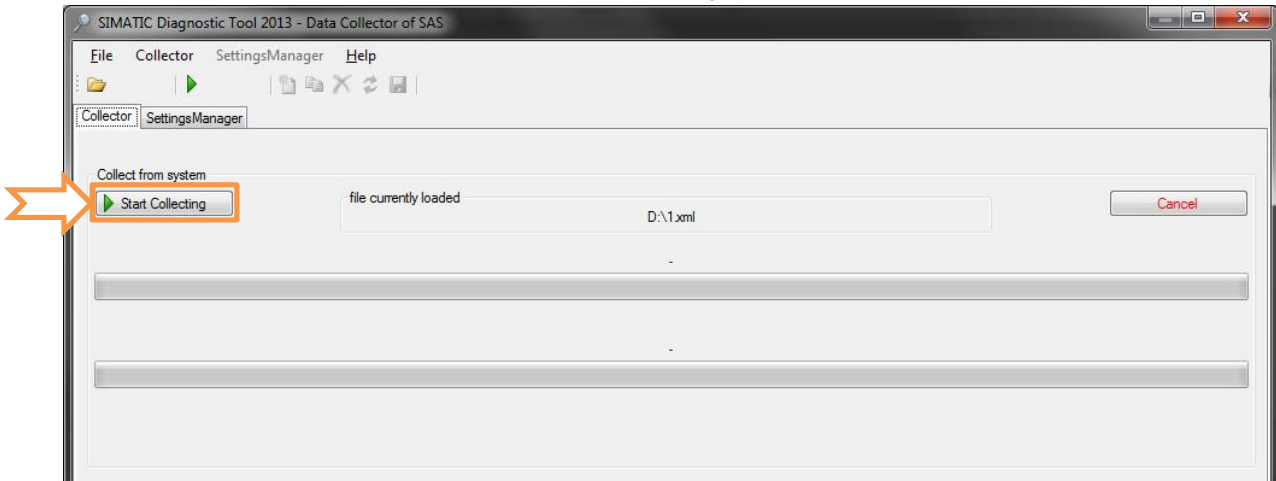
6. Choose specific diagnostic information. You can use “Select Task” or check needed checkboxes on your own. Technical support may also specify needed checkboxes. Enter another storage path for archives at “Set General Information” if needed.



7. Proceed step 3 to 5 for further systems and then save the configuration



8. Switch to "Collector" Tab and Start collecting

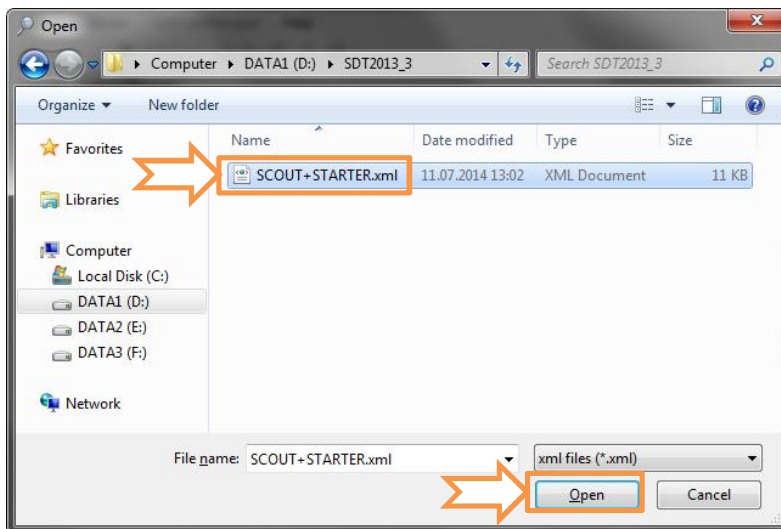
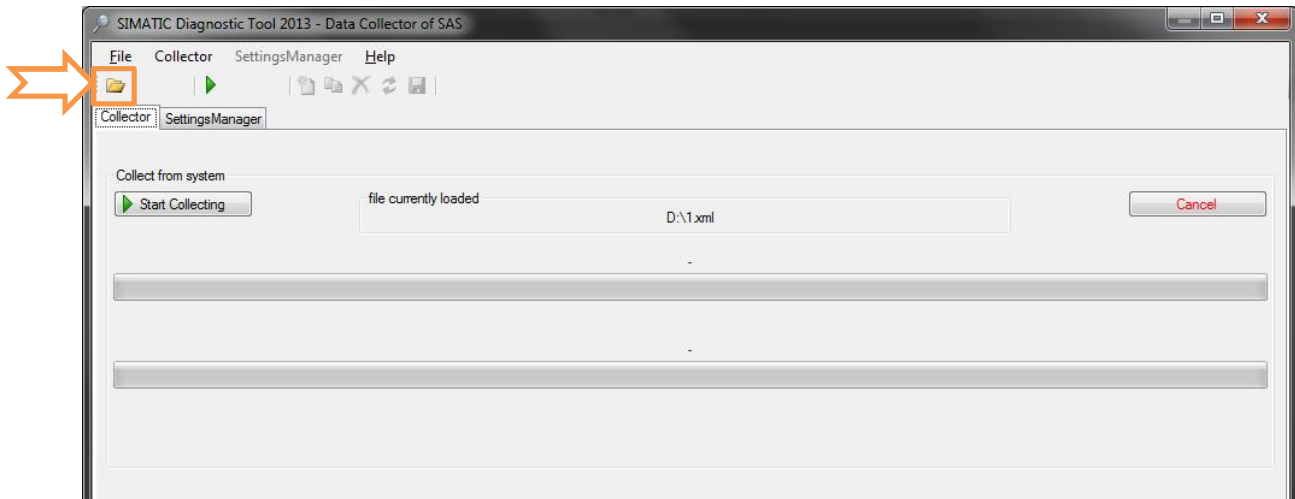


When collecting is finished a folder with an archive with all collected data will appear in tool directory / your entered storage directory.

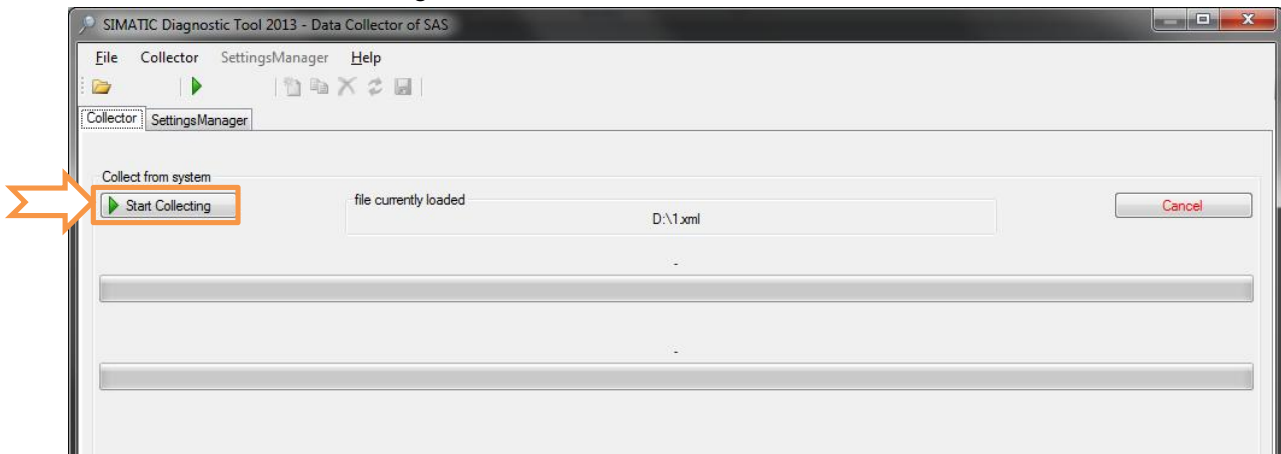
C Instructions for STARTER / SCOUT diagnostic file collecting

This example describes collecting diagnostic files for drives software products (STARTER , SCOUT etc.) on a local system.

1. Launch SDT....exe (Will "run as administrator" automatically)
2. Open the SCOUT_STARTER.xml (Download from FAQ)



3. Click “Start collecting”



When collecting is finished a folder with an archive with all collected data will appear in tool directory / your entered storage directory.

D Configure process memory dumps during runtime

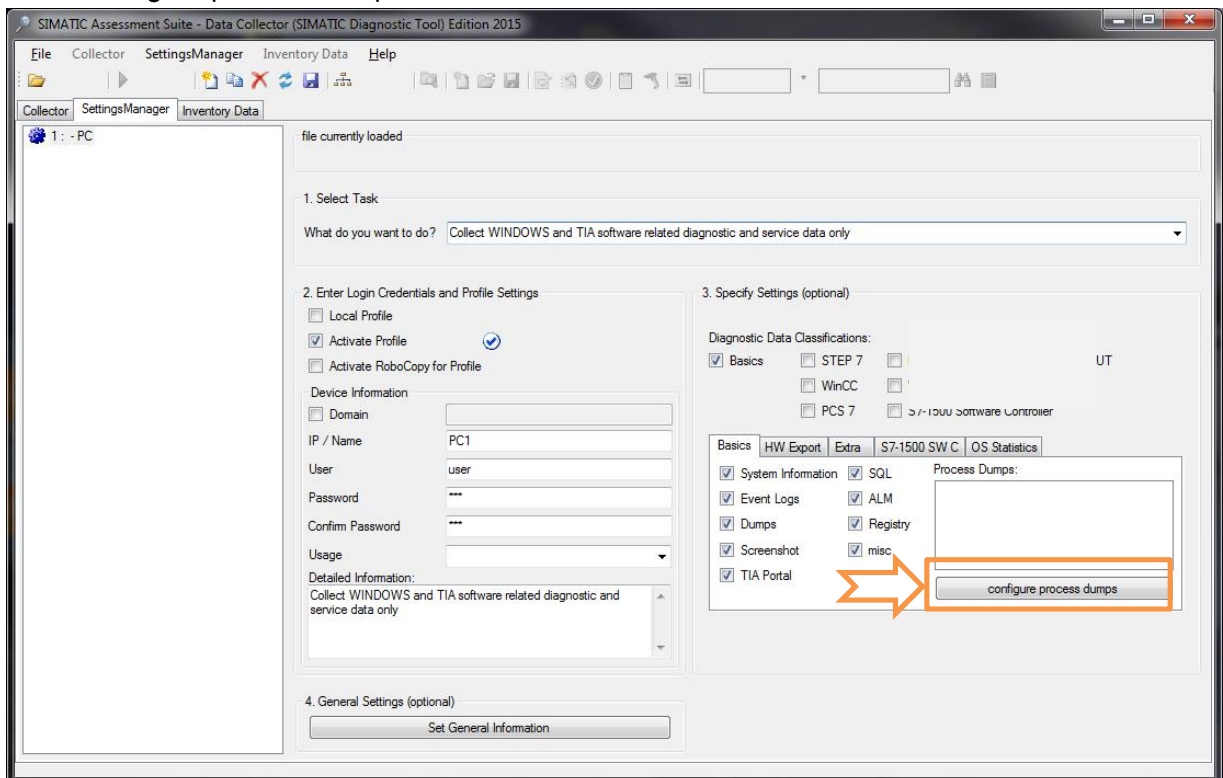
This chapter will describe how to configure a process memory dump fetched during runtime and collected with SAS-DC.

Therefore download the "Procdump.zip" file from the Microsoft internet site:

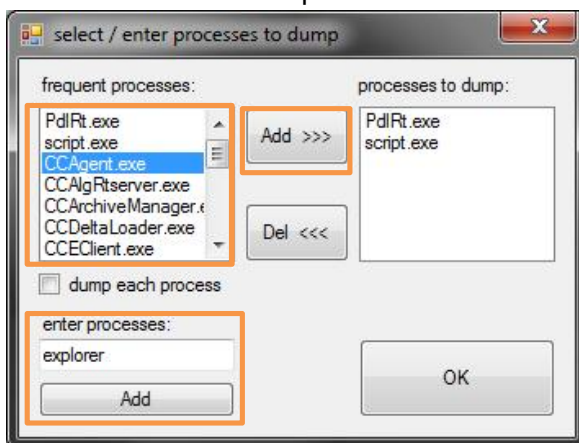
<http://technet.microsoft.com/en-us/sysinternals/dd996900>

and unpack the "procdump.exe" file into the subfolder "...bin"

1. Create a profile using chapter B
2. Click "configure process dumps"



3. Select or enter desired process and click "Add"



4. Enter "_DUMP_ALL_" to dump each process on system