

SIEMENS

Ingenuity for life

Backup/Restore options for SIMATIC HMI Operator Panels

WinCC Unified V17, WinCC Advanced V17

<https://support.industry.siemens.com/cs/ww/en/view/68373729>

Siemens
Industry
Online
Support



Legal information

Use of application examples

Application examples illustrate the solution of automation tasks through an interaction of several components in the form of text, graphics and/or software modules. The application examples are a free service by Siemens AG and/or a subsidiary of Siemens AG ("Siemens"). They are non-binding and make no claim to completeness or functionality regarding configuration and equipment. The application examples merely offer help with typical tasks; they do not constitute customer-specific solutions. You yourself are responsible for the proper and safe operation of the products in accordance with applicable regulations and must also check the function of the respective application example and customize it for your system.

Siemens grants you the non-exclusive, non-sublicensable and non-transferable right to have the application examples used by technically trained personnel. Any change to the application examples is your responsibility. Sharing the application examples with third parties or copying the application examples or excerpts thereof is permitted only in combination with your own products. The application examples are not required to undergo the customary tests and quality inspections of a chargeable product; they may have functional and performance defects as well as errors. It is your responsibility to use them in such a manner that any malfunctions that may occur do not result in property damage or injury to persons.

Disclaimer of liability

Siemens shall not assume any liability, for any legal reason whatsoever, including, without limitation, liability for the usability, availability, completeness and freedom from defects of the application examples as well as for related information, configuration and performance data and any damage caused thereby. This shall not apply in cases of mandatory liability, for example under the German Product Liability Act, or in cases of intent, gross negligence, or culpable loss of life, bodily injury or damage to health, non-compliance with a guarantee, fraudulent non-disclosure of a defect, or culpable breach of material contractual obligations. Claims for damages arising from a breach of material contractual obligations shall however be limited to the foreseeable damage typical of the type of agreement, unless liability arises from intent or gross negligence or is based on loss of life, bodily injury or damage to health. The foregoing provisions do not imply any change in the burden of proof to your detriment. You shall indemnify Siemens against existing or future claims of third parties in this connection except where Siemens is mandatorily liable.

By using the application examples you acknowledge that Siemens cannot be held liable for any damage beyond the liability provisions described.

Other information

Siemens reserves the right to make changes to the application examples at any time without notice. In case of discrepancies between the suggestions in the application examples and other Siemens publications such as catalogs, the content of the other documentation shall have precedence.

The Siemens terms of use (<https://support.industry.siemens.com>) shall also apply.

Security information

Siemens provides products and solutions with Industrial Security functions that support the secure operation of plants, systems, machines and networks.

In order to protect plants, systems, machines and networks against cyber threats, it is necessary to implement – and continuously maintain – a holistic, state-of-the-art industrial security concept. Siemens' products and solutions constitute one element of such a concept.

Customers are responsible for preventing unauthorized access to their plants, systems, machines and networks. Such systems, machines and components should only be connected to an enterprise network or the Internet if and to the extent such a connection is necessary and only when appropriate security measures (e.g. firewalls and/or network segmentation) are in place. For additional information on industrial security measures that may be implemented, please visit <https://www.siemens.com/industrialsecurity>.

Siemens' products and solutions undergo continuous development to make them more secure. Siemens strongly recommends that product updates are applied as soon as they are available and that the latest product versions are used. Use of product versions that are no longer supported, and failure to apply the latest updates may increase customer's exposure to cyber threats.

To stay informed about product updates, subscribe to the Siemens Industrial Security RSS Feed at: <https://www.siemens.com/industrialsecurity>.

Table of contents

	Legal information	2
1	Introduction	4
1.1	Overview	4
1.2	Backup Methods.....	4
1.3	Brief Description of the Backup Types	4
1.4	Components Used.....	6
2	WinCC Advanced	7
2.1	Service Concept/Automatic Backup.....	7
2.1.1	Enable/Disable the Service Concept.....	7
2.1.2	Enabling the Service Concept on the Operator Panel	7
2.1.3	Replacing the Operator Panel.....	7
2.2	Backup/Restore via the Operator Panel.....	8
2.2.1	Creating a Backup.....	8
2.2.2	Restoring Data	9
2.3	Backup/Restore via WinCC (TIA Portal)	10
2.3.1	Creating a Backup.....	10
2.3.2	Restoring Data	12
2.4	Backup/Restore with ProSave	14
2.4.1	Creating a Backup.....	14
2.4.2	Restoring Data	16
2.5	Backup/Restore with the SIMATIC Automation Tool	18
2.5.1	Default Settings	18
2.5.2	Creating a Backup.....	20
2.5.3	Restoring Data	21
3	WinCC Unified	23
3.1	General remarks.....	23
3.1.1	"Service and Commissioning"	23
3.1.2	Slots for Data and System Memory Card.....	23
3.2	Service Concept/Automatic Backup	24
3.3	Backup/Restore via the Operator Panel.....	26
3.3.1	Creating a Backup.....	26
3.3.2	Restoring Data	27
3.4	Backup/Restore with WinCC Unified (TIA Portal)	28
3.4.1	Creating a Backup.....	28
3.4.2	Restoring Data	30
3.5	Backup/Restore with ProSave	32
3.5.1	Creating a Backup.....	32
3.5.2	Restoring Data	35
3.6	Backup/Restore with the SIMATIC Automation Tool	37
3.6.1	Creating a Backup.....	37
3.6.2	Restoring Data	38
4	Appendix	41
4.1	Service and support	41
4.2	Industry Mall	42
4.3	Links and literature	42
4.4	Change documentation	42

1 Introduction

1.1 Overview

Time and again, improper handling or other factors, such as harsh environmental conditions, can damage HMI Operator Panels, making it impossible to operate machines or system sections.

To keep the associated downtimes as low as possible, you should consider in advance which data backup options are offered by the SIMATIC Comfort Panel, for example, and which method makes the most sense.

1.2 Backup Methods

The following backup and restore options are available for SIMATIC Comfort Panels and SIMATIC Unified Comfort Panels.

- ProSave
- SIMATIC Automation Tool (SAT)
- Comfort Panels Service Concept.
(Continuous automatic backup of all process-relevant Operator Panel data).

Note

It is not possible to open and edit the backup file with WinCC (TIA Portal). The file can only be loaded to the original Panel or a Panel of the same type using a restore command.

1.3 Brief Description of the Backup Types

Service Concept/Automatic Backup

With the Service Concept enabled (automatic backup), the Comfort Panel saves all data required for operation to a SIMATIC HMI memory card.

The following files are, therefore, stored on the system memory card:

- Configuration data of the Comfort Panel.
- Operating system of the Comfort Panel.
- Licenses on the Comfort Panel.
- Settings that are configured in the Control Panel.
- Changes that have been made, for example, via "Transfer Settings", etc.

You can insert the SIMATIC HMI memory card into any Operator Panel of the same type. After switching on the power supply of the identical Operator Panel, you will be prompted to enable the Service Concept by the message "Use system card?". The contents of the SIMATIC HMI memory card are automatically copied to the internal memory of the Operator Panel. The Operator Panel is then restarted.

Refer to the Comfort Panel manual for information on the automatic backup parameters for the SIMATIC HMI memory card:
"Comfort Panels > Commissioning the Device > Using the Service Concept > Enabling the Service Concept".

- The key advantage of automatic backup is that the data on the system memory card is continuously and automatically updated.
- Only a SIMATIC HMI memory card (SD card) with at least 2 GB (6AV2181-8XP00-0AX0) (an SMC for short) is permitted as the system memory card. All other memory cards will not be recognized by the Operator Panel as system memory cards. The system memory card is part of the Operator Panels Service Concept. If you enable the Service Concept, all data from the internal memory of the Operator Panel is transferred to the system memory card. The system memory card is not visible in the user interface of the Operator Panel and cannot be used as a data memory.

Backup/restore with a memory card/USB memory device

During backup, the operating system, applications, and data are copied from the internal flash memory of the Operator Panel to a memory card or a SIMATIC IPC USB flash drive (USB stick).

A restore operation erases the flash memory of the Operator Panel after confirmation. After that, the data saved on the memory card or USB memory is copied to the internal flash memory.

Notes

- The "SIMATIC IPC USB flash drive" is a storage device for IPCs, Comfort Panel, and Basic Panels 2nd Generation. Use the "SIMATIC HMI USB memory stick" for touch, operator, or Multipanels.
- SIMATIC storage devices are preformatted at the factory. They should **not** be formatted, because in this case, they become unusable for certain functions. By overwriting the internal structure, they are no longer recognized in SIMATIC devices and can, therefore, no longer be used in these devices. For more information on formatting and restoring SIMATIC storage devices, refer to the entry IDs: [95853895](#) and [69063974](#).
- Do not confuse Multi Media Cards with Micro Memory Cards. For both products, the abbreviation "MMC" or "MM" may appear. "SIMATIC HMI Multi Media Cards" are used in Panels. "SIMATIC S7 Micro Memory Cards" may only be used in SIMATIC S7 CPUs, ET200 series modules with CPU functionality, SIMATIC Field PGs, SIMATIC Power PGs, and USBs.

Backup/Restore with SIMATIC ProSave service tool

ProSave provides all functions necessary to transfer data between the configuration PC and the Operator Panel:

- Data backup via backup/restore
- Updating the operating system

ProSave can be installed on a PC and used for service purposes, for example, without installing the Engineering System.

You then define the setting for the Operator Panel and the interface in ProSave and in the PG/PC interface.

Detailed information about ProSave can be found via [4](#).

SAT (SIMATIC Automation Tool)

The tool can be used to perform commissioning and service activities for SIMATIC HMI Operator Panels independently of the TIA Portal.

- Program download to HMI Panels
- Backup and restore of projects on HMI Panels

The above functions can be executed as a mass operation, i.e., simultaneously on several SIMATIC HMI Operator Panels.

1.4 Components Used

The following hardware and software components were used to create this application example:

Table 1-1

Components	Quantity	Article number	Note
SIMATIC HMI TP700 Comfort	1	6AV2124-0GC01-0AX0	All sizes
SIMATIC HMI MTP700 Unified Comfort	1	6AV2128-3GB06-0AX0	All sizes
WinCC Advanced V17	1	6AV2102-0AA07-0AA5	Or later version
SIMATIC WinCC Unified V16 Runtime System	1	6AV2154-3DB01-6AA0	
SIMATIC WinCC Unified V17 Runtime System	1	6AV2154-3DB01-7AA0	
External storage devices	--	--	See link 7

This application example consists of the following components:

Table 1-2

Components	File name	Note
Document	68373729_BackupRestore_DOC_V20.de	This document

2 WinCC Advanced

2.1 Service Concept/Automatic Backup

2.1.1 Enable/Disable the Service Concept

You can enable and disable the Service Concept as needed.

1. Open the Control Panel on the Operator Panel.
2. Open the "OP Properties" dialog via the "OP" icon.
3. Switch to the "System Card" tab.
4. Enable or disable the Service Concept via "Disable & Reboot".
5. Reboot the Operator Panel.

2.1.2 Enabling the Service Concept on the Operator Panel

To enable the Service Concept on an Operator Panel during initial startup, proceed as follows:

1. Switch on the power supply of the Operator Panel.
2. Slide the sliding cover to position 2.
3. Insert the system memory card into the slot provided.
4. Push the sliding cover back to its original position.
5. Confirm the "Use system card?" message prompting you to enable the Service Concept.

The data of the internal memory is copied to the system memory card.

CAUTION	The SIMATIC HMI Memory Card must not be formatted. See the following entry 3.
----------------	--

2.1.3 Replacing the Operator Panel

Requirements

- The Service Concept was enabled on the defective Operator Panel.
- An identical replacement unit is available.
- The slot for the system memory card is enabled on the replacement device (delivery state).
- If required, check the setting in the Control Panel under "OP Properties" in the "System Card" tab.

Procedure

1. Switch off the defective Operator Panel.
2. Remove the defective Operator Panel.
3. Install the replacement Operator Panel.
4. Switch on the power supply of the replacement device.

5. Insert the system memory card of the defective Operator Panel into the corresponding slot of the replacement Operator Panel.
6. Confirm the "Use system card?" message prompting you to enable the Service Concept.

The contents of the system memory card are copied to the internal memory of the Operator Panel. The Operator Panel is then restarted.

2.2 Backup/Restore via the Operator Panel

2.2.1 Creating a Backup

The following external storage devices can be used:

- SD memory card
- USB storage device, e.g., USB stick.

1. Open the Control Panel.
2. Open the "Backup/Restore" dialog with the "Backup/Restore" icon. The dialog box displays a list of available external storage devices.
3. Select the desired external storage device and press "Backup/Restore".
4. In the "Backup/Restore" dialog, switch to the "Backup" tab.
5. Select an empty entry and start the backup process via "Backup". The external storage device is tested. After that, the progress of the backup process is displayed under "Current Step". The end of the backup operation is indicated by the message "The operation completed successfully".
6. Acknowledge this message.
7. The dialog closes.

2.2.2 Restoring Data

The following external storage devices can be used:

- SD memory card
- USB storage device, e.g., USB stick.

CAUTION	Loss of data possible All data on the Operator Panel is deleted during a restore operation. License keys are deleted after confirmation. If necessary, back up the data before restoring (restore process).
----------------	---

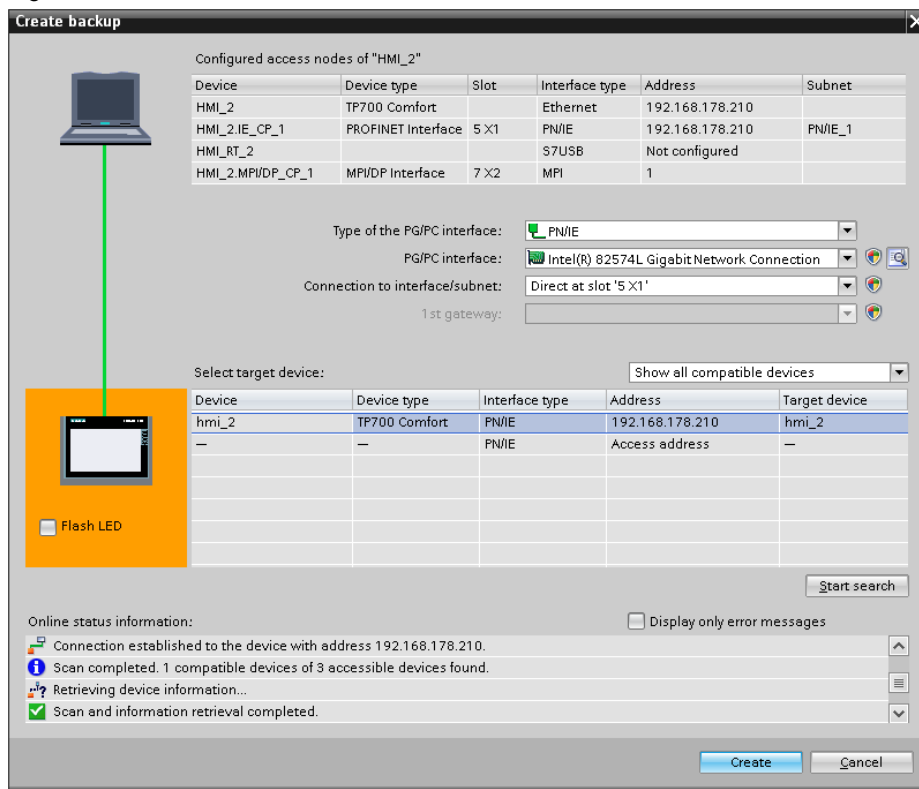
1. Open the Control Panel.
2. Open the "Backup/Restore" dialog with the "Backup/Restore" icon.
The dialog box displays a list of available external storage devices.
3. Select the desired external storage device and press "Backup/Restore".
4. In the "Backup/Restore" dialog, switch to the "Restore" tab.
The backup files on the selected storage device are shown in the list.
5. Select a backup file and start the restore process via the "Restore" button.
The content of the backup file is checked. After a successful test, the alarm is displayed stating that the data of the internal memory has been deleted.
6. Acknowledge this message.
The internal memory is deleted. The content of the backup file is then copied to the internal memory. A progress bar shows the status of the restore process.
After successful restoration, you are prompted to remove the external storage device and restart the Operator Panel.
7. Remove the external memory and confirm the message.
8. The Operator Panel starts.

2.3 Backup/Restore via WinCC (TIA Portal)

2.3.1 Creating a Backup

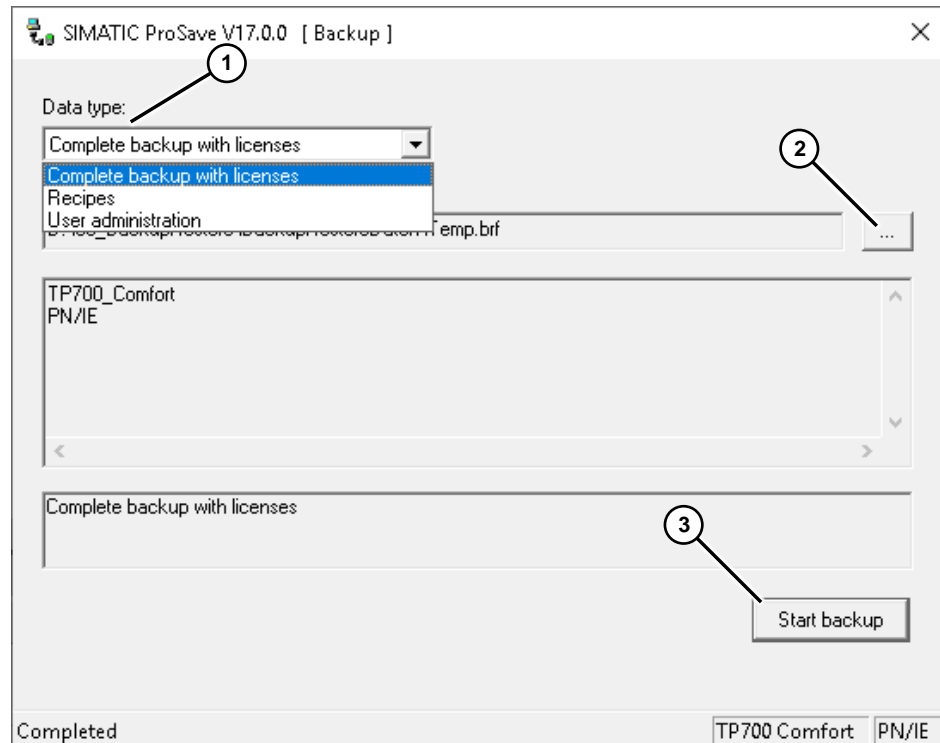
1. In the project navigation, select the Operator Panel from which you want to restore the data.
2. Select "Online > HMI Operator Panel Maintenance > Save" in the menu bar. The connection settings window opens.
3. After you have configured the connection settings and established a connection to the Operator Panel, press the "Create" button.

Figure 2-1



4. The following ProSave menu opens.

Figure 2-2

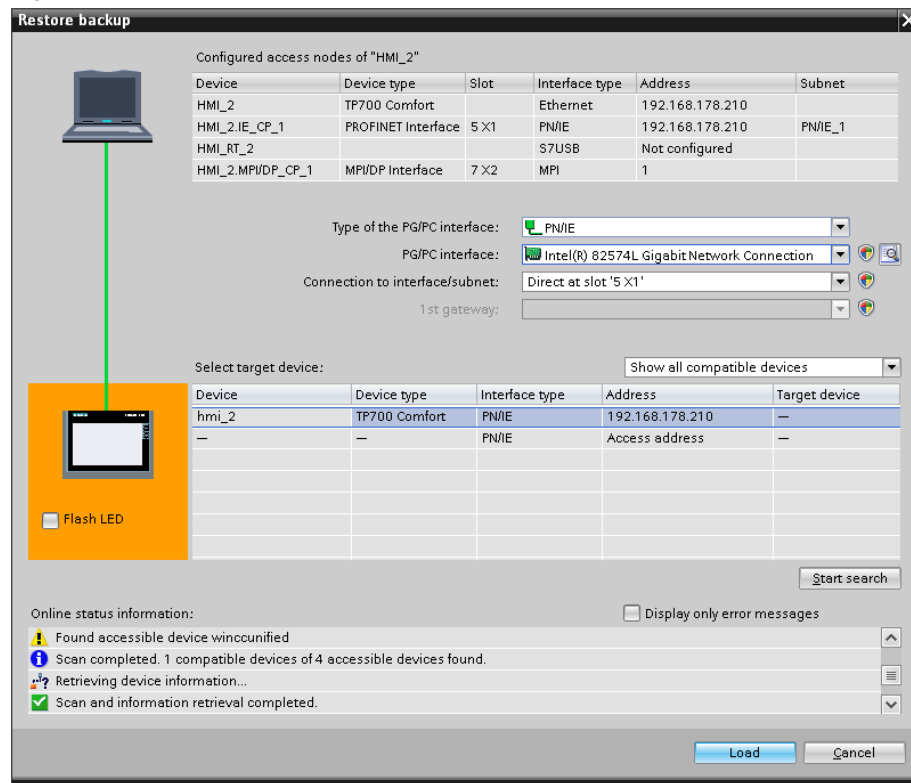


5. (1) Select one of the following backup options from the "Data type" drop-down list.
 - a. Complete backup with licenses
 - b. Recipes
 - c. User administration
- (2) Use the "..." button to select the storage location. Subsequently, you can specify a name for the backup file.
- (3) Start the backup process via the "Start backup" button.
6. Close the windows after the successful backup.

2.3.2 Restoring Data

1. In the project navigation, select the Operator Panel from which you want to restore the data.
2. Select "Online > HMI Operator Panel Maintenance > Restore" in the menu bar. The connection settings window opens.

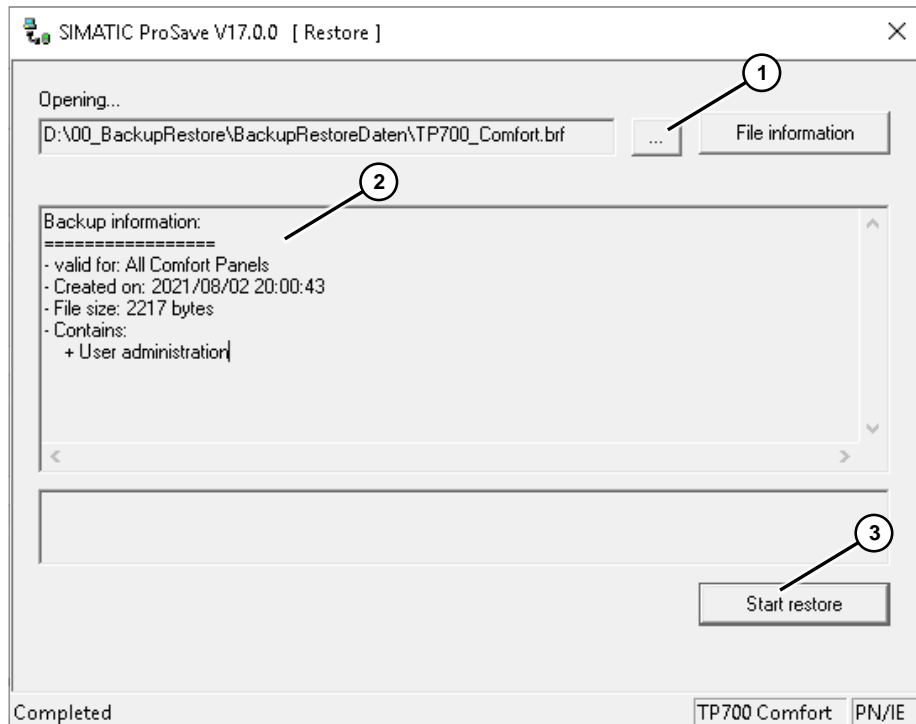
Figure 2-3



After you have configured the connection settings and established a connection to the Operator Panel, press the "Load" button.

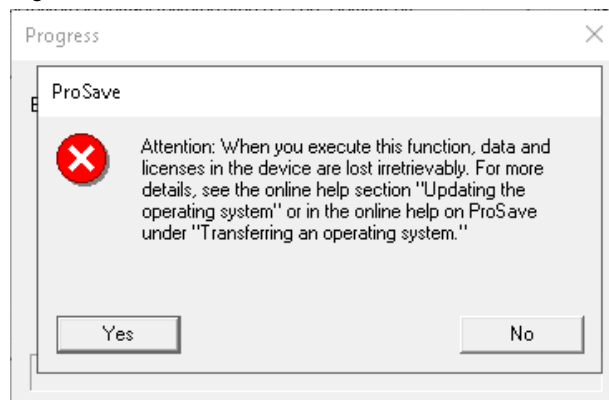
The following ProSave menu opens.

Figure 2-4



3. (1) Use the button to select the storage location in which you have saved the "backup file".
- (2) After selecting the backup file, information about this backup file is displayed here.
- (3) Press the "Start restore" button.
4. Before the restore process starts, the following message appears. (data and licenses are deleted).
To continue the restore process, press the "Yes" button.

Figure 2-5



5. Close the windows after the successful restore process.

2.4 Backup/Restore with ProSave

2.4.1 Creating a Backup

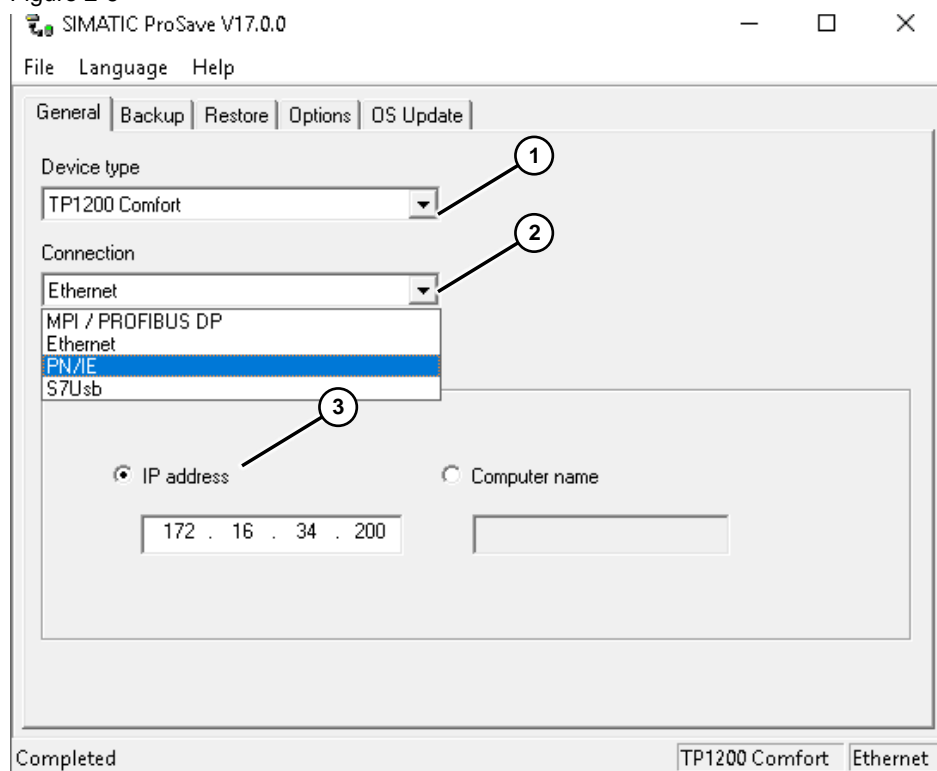
1. Start the ProSave application.
2. Select the "General" tab from the menu bar.
3. (1) Use the "Device type" drop-down list to select the Operator Panel for which you want to restore the data.

(2) Use the "Connection" drop-down list to select the communication connection via which you have connected the Operator Panel to ProSave.

- MPI/PROFIBUS DP
- Ethernet
- PN/IO
- S7Usb

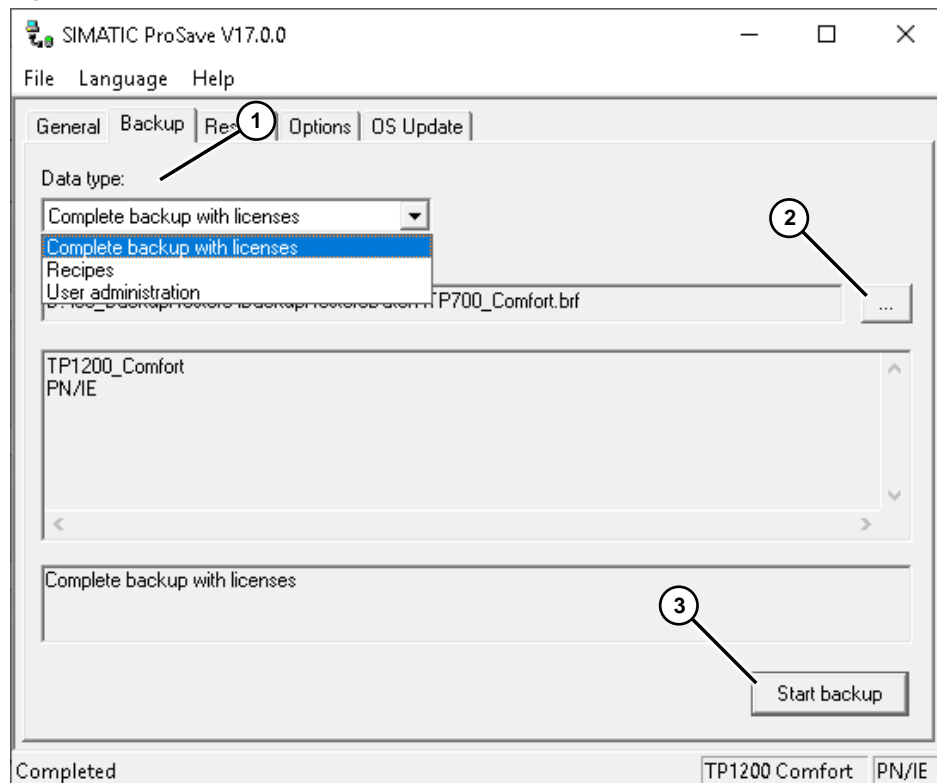
(3) Enter the address of the Operator Panel here. In this example, it is the IP address.

Figure 2-6



4. Select the "Backup" menu from the menu bar.

Figure 2-7



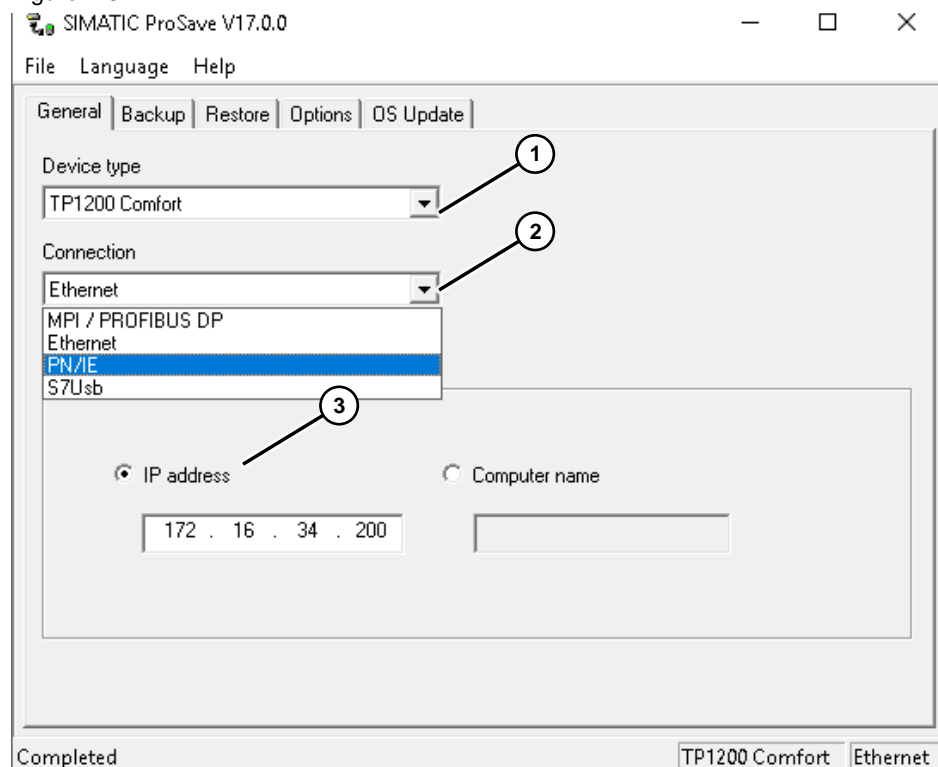
5. (1) Select one of the following backup options from the "Data type" drop-down list.
 - Complete backup with licenses
 - Recipes
 - User administration
- (2) Use the "..." button to select the storage location. Subsequently, you can specify a name for the backup file.
- (3) Start the backup process via this button.
6. Close the ProSave application after the successful backup.

2.4.2 Restoring Data

1. Start the ProSave application.
2. Select the "General" tab from the menu bar.
3. (1) Use the "Device type" drop-down list to select the Operator Panel for which you want to restore the data.

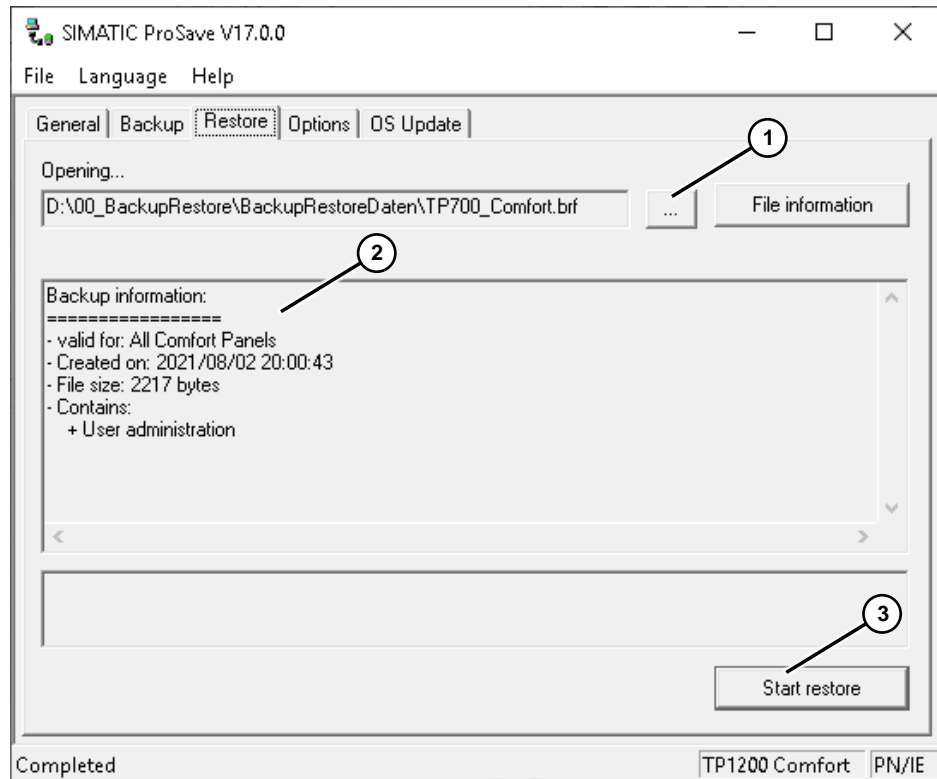
(2) Use the "Connection" drop-down list to select the communication connection via which you have connected the Operator Panel to ProSave.
 - MPI/PROFIBUS DP
 - Ethernet
 - PN/IO
 - S7Usb
(3) Enter the address of the Operator Panel here. In this example, it is the IP address.

Figure 2-8



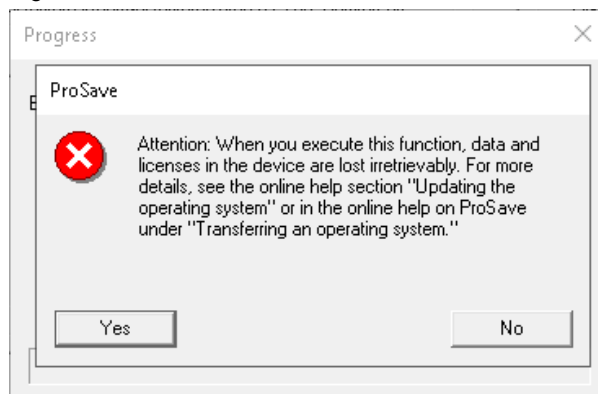
4. Select the "Restore" menu from the menu bar.

Figure 2-9



5. (1) Use the button to select the storage location in which you have saved the "backup file".
- (2) After selecting the backup file, information about this backup file is displayed here.
- (3) Press the "Start restore" button.
6. Before the restore process starts, the following message appears (data and licenses will be deleted). To continue the restore process, press the "Yes" button.

Figure 2-10



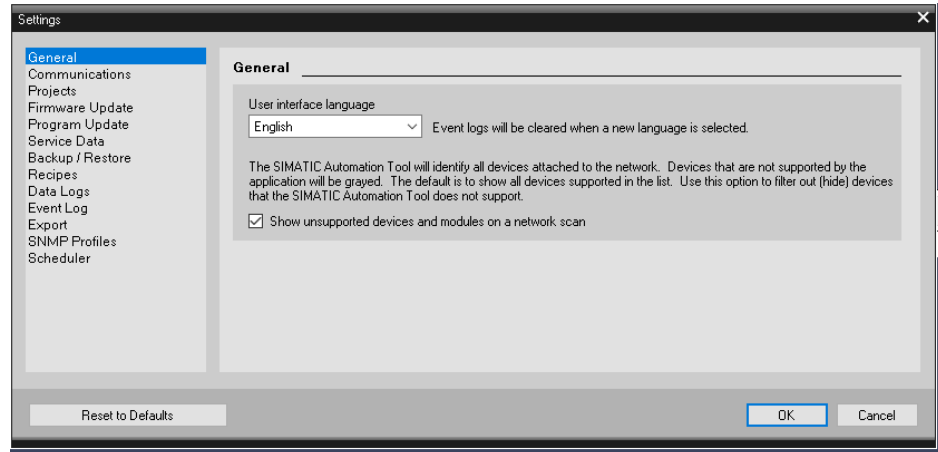
7. After the successful restore process, close the ProSave application

2.5 Backup/Restore with the SIMATIC Automation Tool

2.5.1 Default Settings

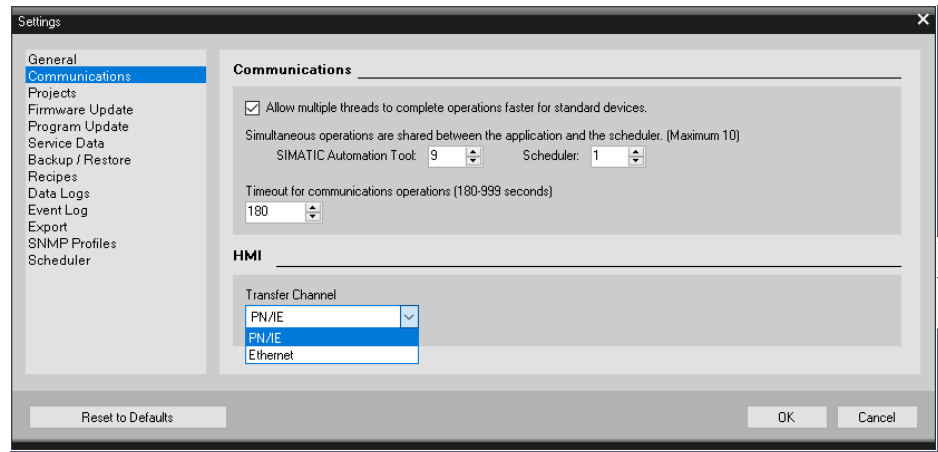
1. Start the SAT application.
2. Open the "Options > Settings..." menu via the menu bar.
3. "General" settings
Here you can set the language of the user interface.

Figure 2-11



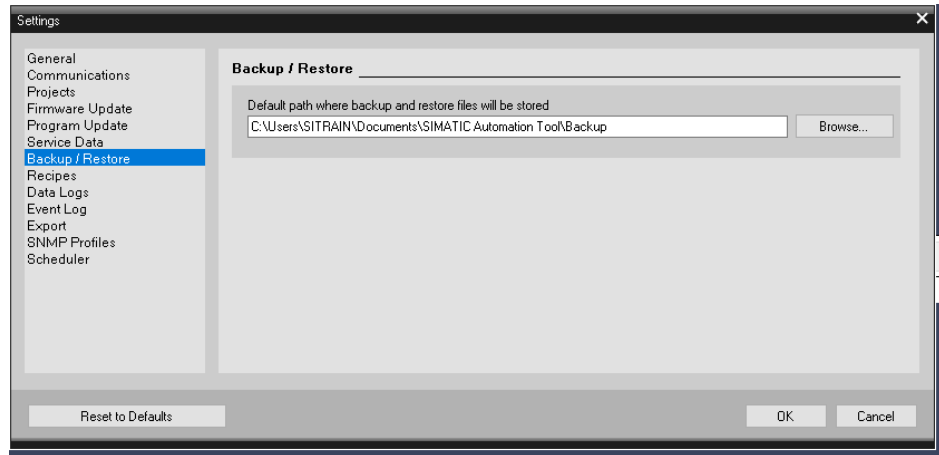
4. "Communication" settings
Select the communication type here. Ensure that the same settings are available on the Operator Panel and in the SAT.

Figure 2-12



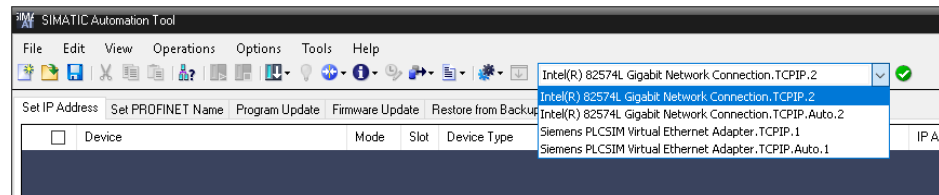
5. "Backup/Restore" settings
Enter the storage location for the backup file here.

Figure 2-13



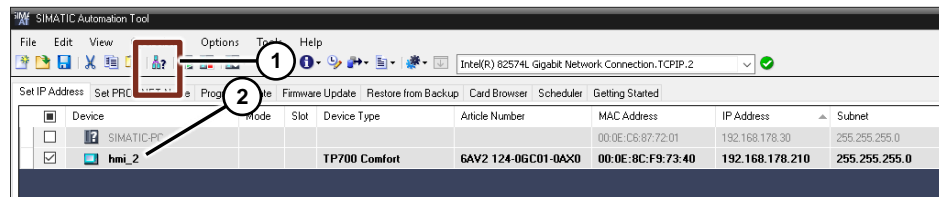
6. Determine the communication interface
Open the drop-down list and select the communication interface with which the PC (SAT) is connected to the Operator Panel.

Figure 2-14



7. Scan network
(1) Click the icon to scan the network.
(2) All devices that can be reached with the SAT are displayed.

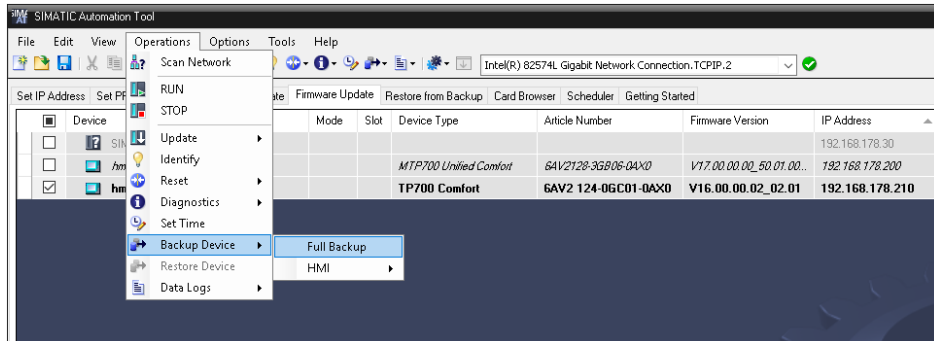
Figure 2-15



2.5.2 Creating a Backup

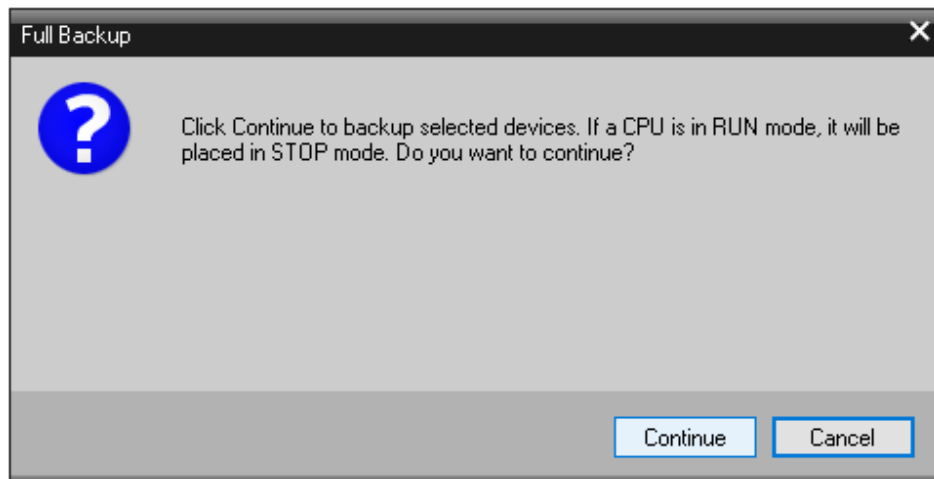
8. Select "Operations > Backup Device > Full Backup" from the menu bar. Alternatively, open the menu via the icon.

Figure 2-16



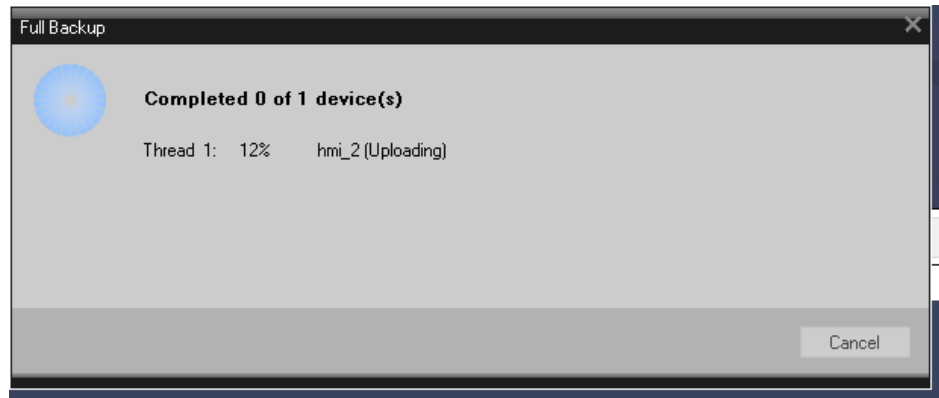
9. The following security query appears. To continue with the process, press the "Continue" button.

Figure 2-17



By confirming with the "Continue" button, the SAT establishes a connection to the Operator Panel and the backup is performed. During the backup, the progress is displayed.

Figure 2-18

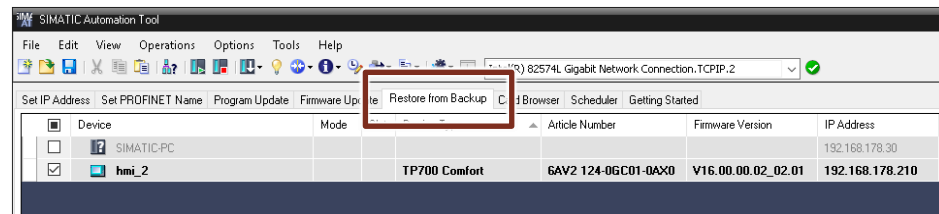


10. After the backup has been completed, the Operator Panel Runtime is automatically restarted.

2.5.3 Restoring Data

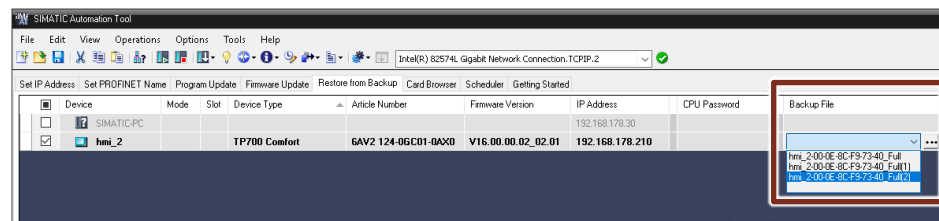
1. Click the "Restore from Backup" tab in the device table.

Figure 2-19



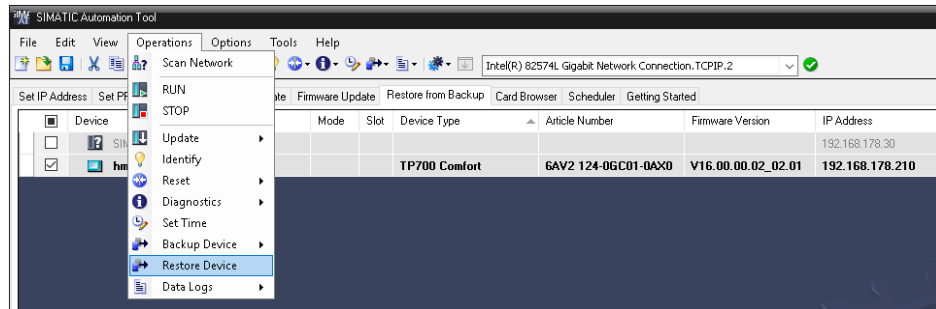
2. Select the "Backup File" column. You can access the backup file via the drop-down window or the button next to it.

Figure 2-20



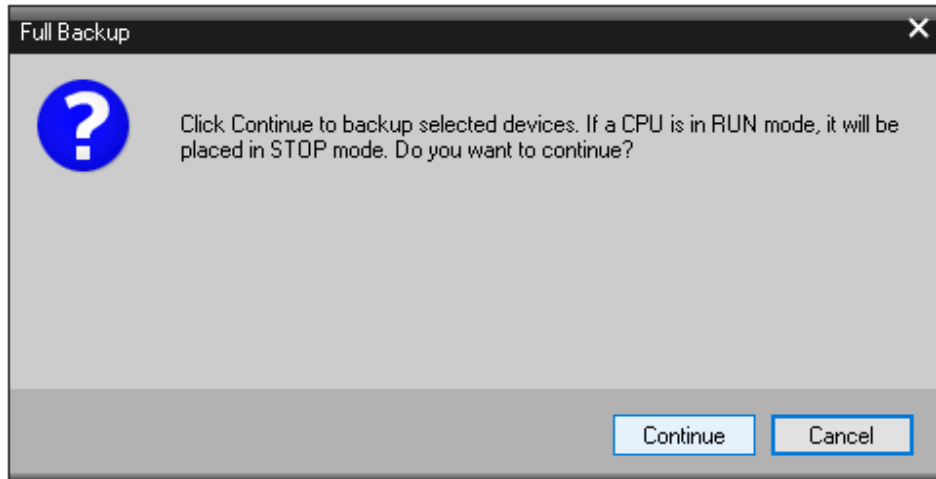
3. Select "Operations > Restore Device" from the menu bar. Alternatively, open the menu via the icon.

Figure 2-21



4. The following security query appears. To continue with the process, press the "Continue" button.

Figure 2-22



5. By confirming with the "Continue" button, the SAT establishes a connection to the Operator Panel and the restore is performed. During the process, the progress is displayed.

Figure 2-23



After completion of the restore process, the Operator Panel boots automatically.

3 WinCC Unified

3.1 General remarks

View of the main window from a Unified Comfort Panel. Select the entry "Service and Commissioning" via the navigation pane or the tile in the window area.

Figure 3-1



3.1.1 "Service and Commissioning"

The following data backup functions can be performed via the "Service and Commissioning" function.

- Automatic backup
- Backup
- Restore

3.1.2 Slots for Data and System Memory Card

The slots for the data memory card and system memory card are located on the back of the Operator Panel. The memory cards are secured via a sliding cover.

The following figure shows the slots with sliding covers.

Figure 3-2



- (1) Slot "X51" for the data memory card in "SD(IO/HC)" format. Card recommendations: SIMATIC SD card with at least 32 GB.
- (2) Slot "X50" for the system memory card.
Permitted card: SIMATIC HMI memory card 32 GB.
- (3) Sliding cover, two-stage.

Note Only the SIMATIC SD memory card with at least 32 GB is permitted as a system memory card. All other memory cards will not be recognized by the Operator Panel as system memory cards.

Further information

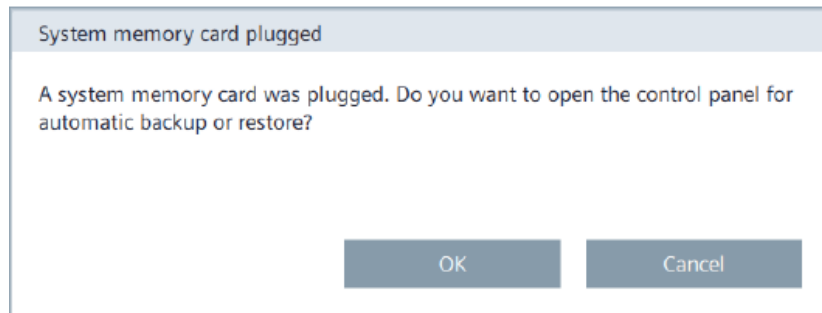
Detailed information about backup/restore (discussion of multiple configurations) and the use of memory cards can be found via the following link [5](#).

3.2 Service Concept/Automatic Backup

Note To be able to execute the function, a system memory card must be inserted in the "X50" slot. See Section [3.1.2](#).

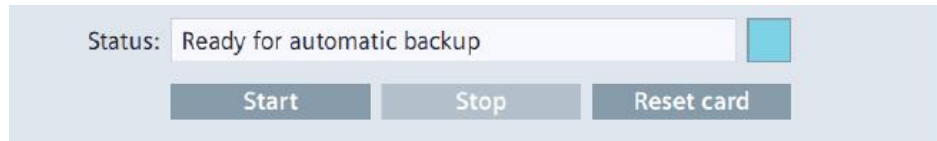
1. With a newly inserted system memory card and after starting the Operator Panel, the following message is displayed.

Figure 3-3



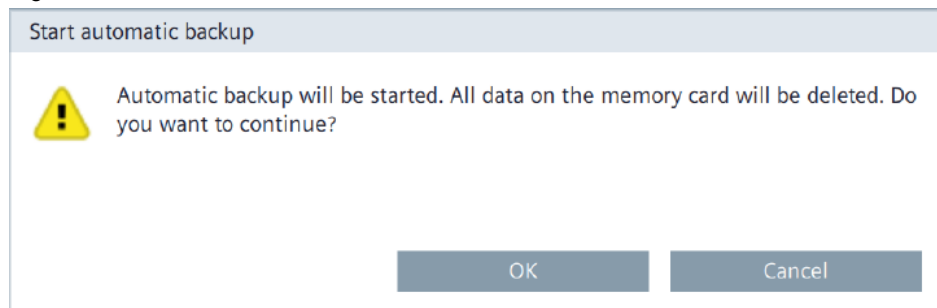
- Click the "OK" button. In the Control Panel "Service and Commissioning" window, "Automatic Backup" opens. "Ready for automatic backup" is displayed in the "Status" field.

Figure 3-4



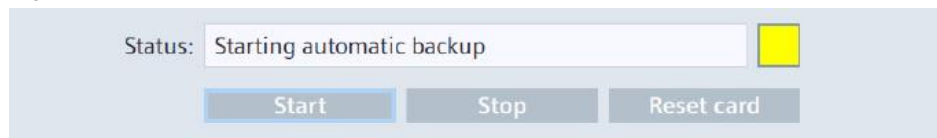
- Note: Alternatively, open the "Automatic backup" application on the Operator Panel under the "Service and Commissioning" function.
- Click on the "Start" button.
- The "Start automatic backup" dialog is displayed.

Figure 3-5



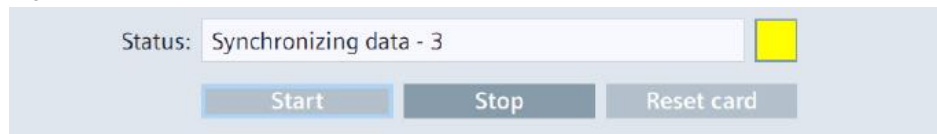
- Click the "OK" button. The status message "Starting automatic backup" is displayed. The system memory card is prepared.

Figure 3-6



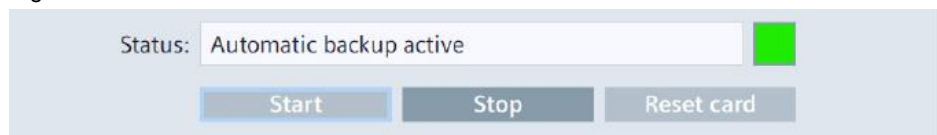
- During preparation, the status message "Synchronizing data" is displayed.

Figure 3-7



- When the preparation is complete, the status message "Automatic backup active" is displayed.

Figure 3-8



You have successfully activated the "Automatic save" function.

3.3 Backup/Restore via the Operator Panel

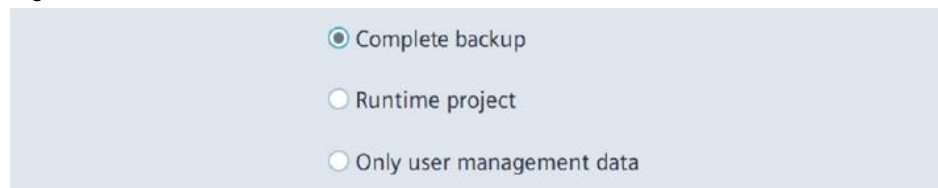
3.3.1 Creating a Backup

Under "Backup", you can back up the operating system, applications, and data located in the flash memory of the Operator Panel to an external storage device.

Use a SIMATIC SD memory card with at least 32 GB or an industrial USB stick as storage device

1. Open the "Backup" application under the "Service and Commissioning" function on the Operator Panel.
2. Select the backup type.
Choose from one of the following options:

Figure 3-9



- "Complete backup":
Back up all Operator Panel data including operating system, project, and User Administration data.
 - "Runtime project":
Save the project of the Operator Panel.
 - "Only user management data":
Save the Operator Panel User Administration.
3. "Backup File" section
 - a. File name: Specify a file name for the backup file.
 - b. Storage media: Specify a storage location via the drop-down list (e.g., X51 or X61).
 - c. Start the backup by clicking the "Create Backup" button.

After pressing the "Create backup" button, the Operator Panel restarts and the data backup is started.

A dialog box with a progress bar is displayed for each backup file.

After the backup process has been completed, the Operator Panel is restarted.

After the restart, the main window of the Control Panel is displayed.

The Operator Panel data is saved on the storage device.

3.3.2 Restoring Data

A restore operation deletes the old data from flash memory of the Operator Panel upon confirmation. The data backed up on the storage device is then transferred.

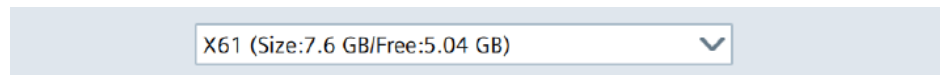
CAUTION **Data loss**

When restoring, existing data on the Operator Panel including the project and Operator Panel password is deleted. License keys are only deleted after a security prompt.

Back up data before restore operations, if required.

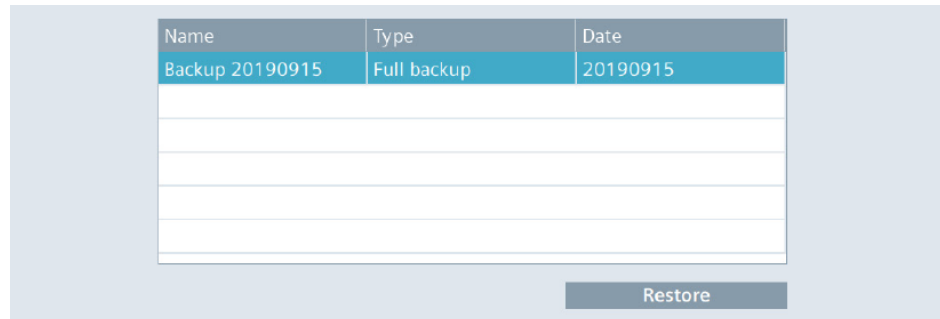
1. Open the "Restore" application under the "Service and Commissioning" function on the Operator Panel.
2. Select storage media: Use the drop-down list to select the storage device on which the backup file is located.

Figure 3-10



3. Backup files
The list shows all backups that can be loaded onto the Operator Panel. Select the desired backup from the list.

Figure 3-11



4. To start the restore process, press the "Restore" button.

After pressing the "Restore" button, the Operator Panel restarts. The restore process then begins.

During the restore process, a dialog box with a progress bar is displayed for each backup file loaded.

After the restore process has been completed, the Operator Panel is restarted again.

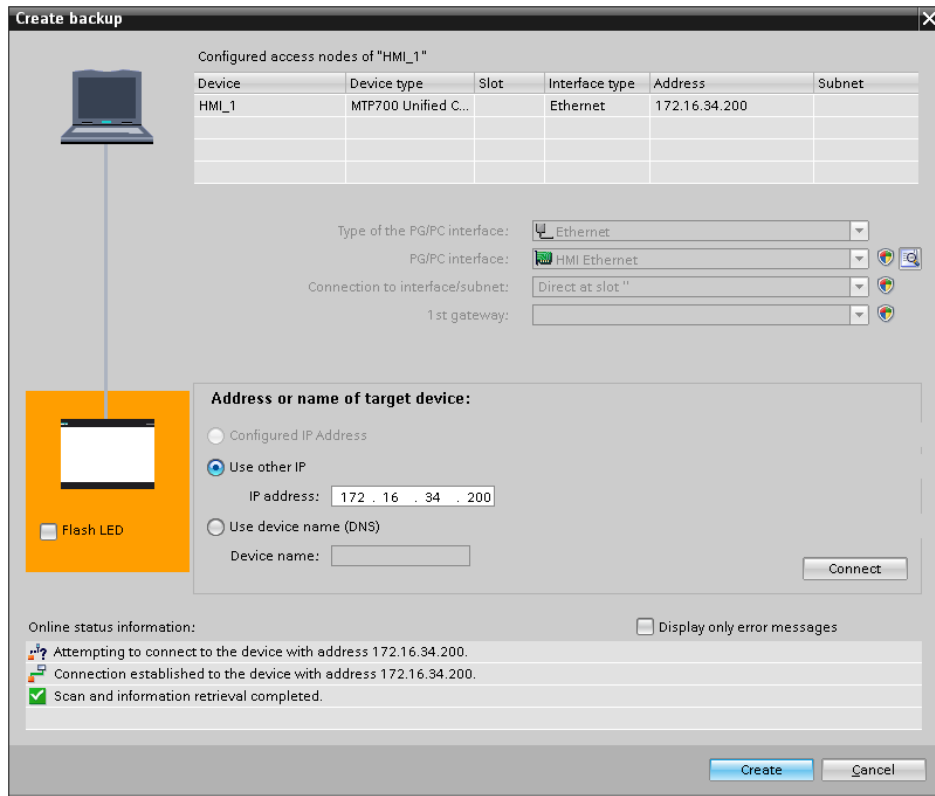
After the restart, the main window of the Control Panel is displayed.

The data from the storage medium is now restored on the Operator Panel.

3.4 Backup/Restore with WinCC Unified (TIA Portal)

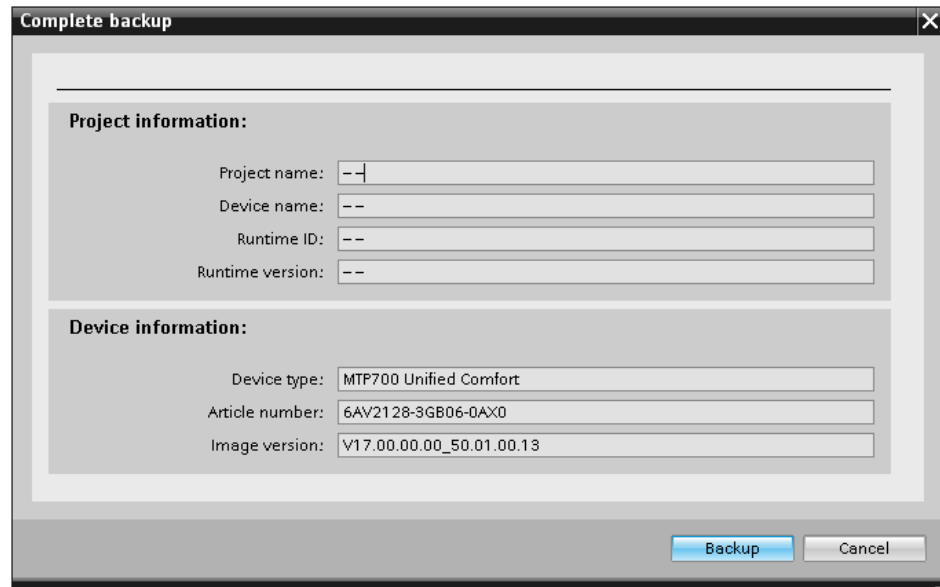
3.4.1 Creating a Backup

1. Connect the Unified Comfort Panel to the PC via the Ethernet interface.
2. In the project navigation, select the Unified Comfort Panel from which you want to create a backup.
3. Select "Online > HMI Operator Panel Maintenance > Save" in the menu bar. The connection settings window opens.
4. After you have configured the connection settings and established a connection via Ethernet to the Operator Panel, press the "Load" button.



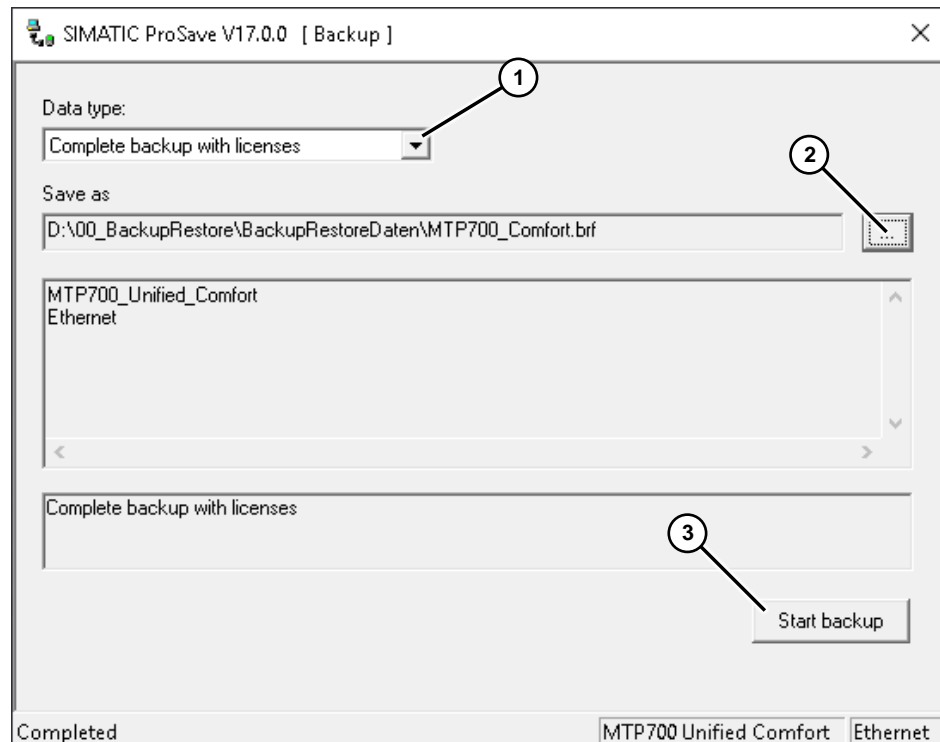
After pressing the "Create" button, the following menu screen opens.

Figure 3-13



To continue with the function, press the "Backup" button. The ProSave menu screen opens.

Figure 3-14



- (1) Use the "Data type" drop-down list to select the "Complete backup with licenses" option.
- (2) Use the "..." button to select the storage location. Subsequently, you can specify a name for the backup file.
- (3) Start the backup process via the "Start backup" button.

After pressing the "Start backup" button, the Operator Panel restarts and the data backup is started.

During the backup, a dialog box with a progress bar is displayed.

After the backup process has been completed, the Operator Panel is restarted.

After restarting, the main window of the Control Panel is displayed.

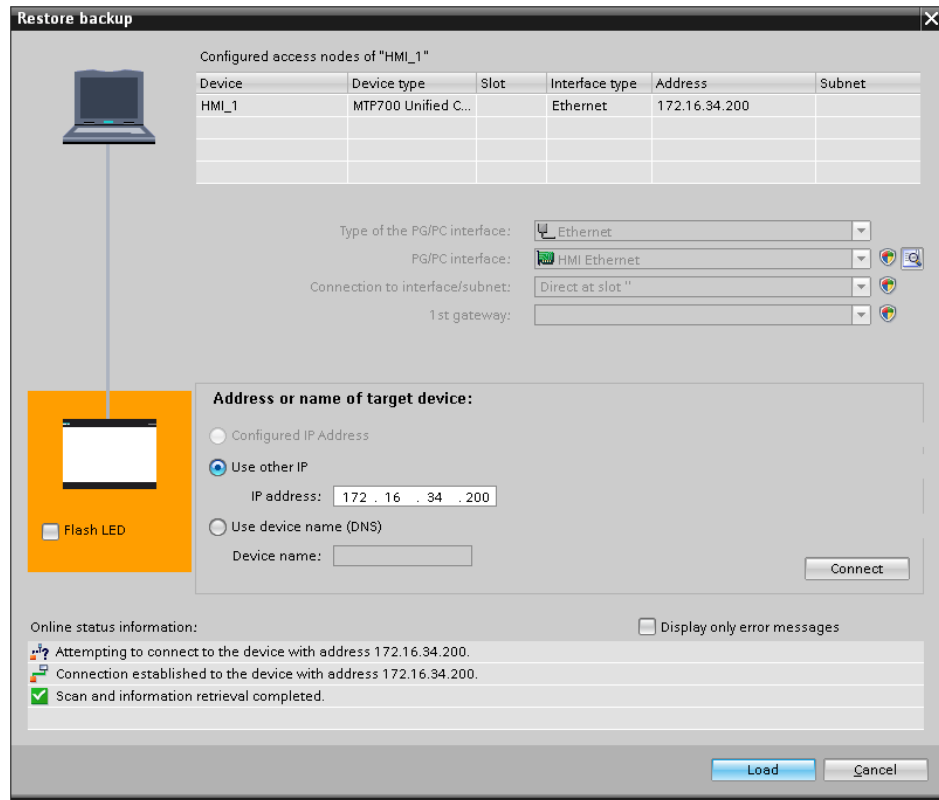
Operator Panel data is saved on the PC.

5. Close the windows after successful backup.

3.4.2 Restoring Data

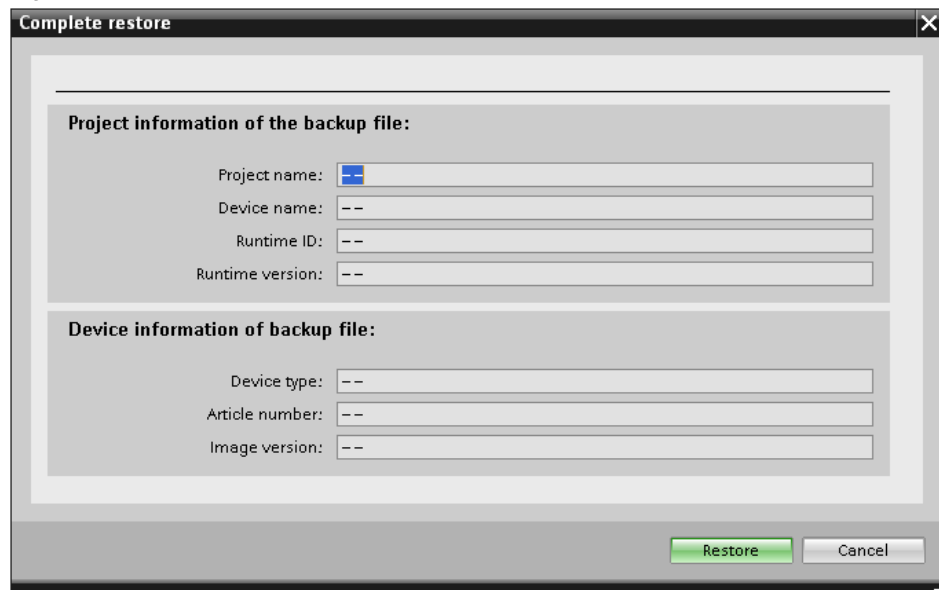
1. Connect the Unified Comfort Panel to the PC via the Ethernet interface.
2. In the project navigation, select the Operator Panel from which you want to create a backup.
3. Select "Online > HMI Operator Panel Maintenance > Restore" in the menu bar. The connection settings window opens.
4. After you have configured the connection settings and established a connection via Ethernet to the Operator Panel, press the "Load" button.

Figure 3-15



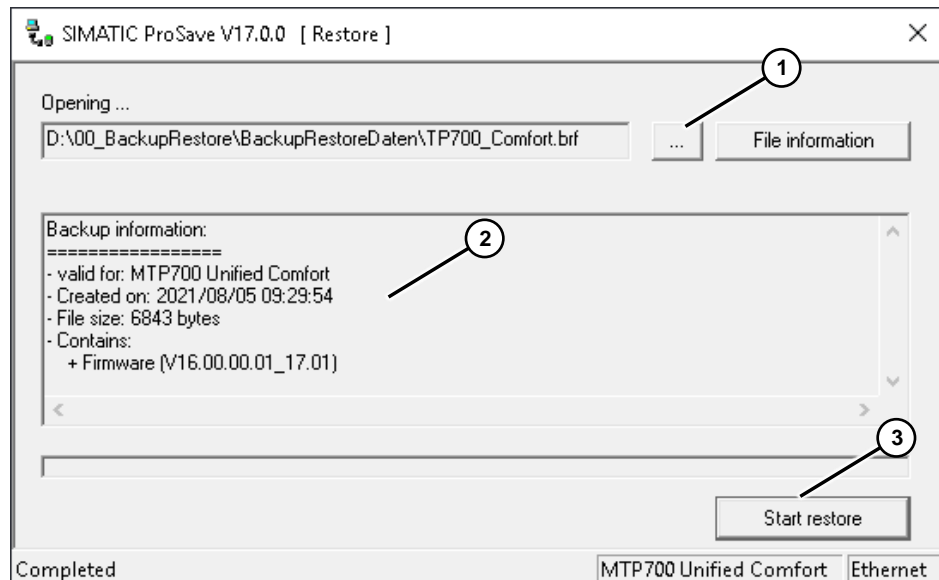
- After you press the "Load" button, the following menu screen is displayed.

Figure 3-16



- To continue the function, press the "Restore" button. The ProSave menu opens.

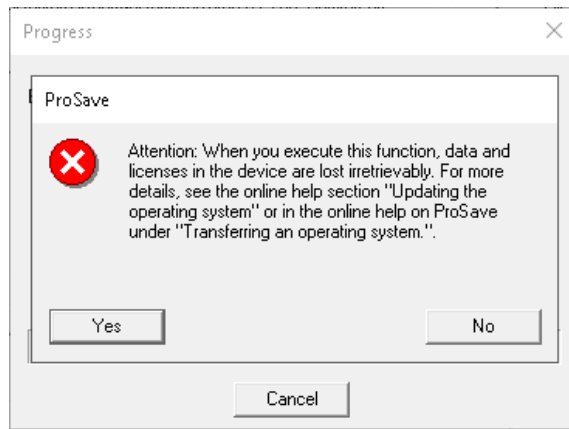
Figure 3-17



- (1) Use the button to select the storage location in which you have saved the "backup file".
- (2) After selecting the backup file, information about this backup file is displayed here.
- (3) Press the "Start restore" button.

8. Before the restore process starts, the following message appears. (data and licenses are deleted).
To continue the restore process, press the "Yes" button.

Figure 3-18



After pressing the "Yes" button, the Operator Panel restarts and the data is transferred to the Operator Panel.

During the restore process, a dialog box with a progress bar is displayed.

After the restore process has been completed, the Operator Panel is restarted again.

After the restart, the main window of the Control Panel is displayed.

The data of the Operator Panel is restored on the panel.

9. Close the windows after the successful restore process.

3.5 Backup/Restore with ProSave

3.5.1 Creating a Backup

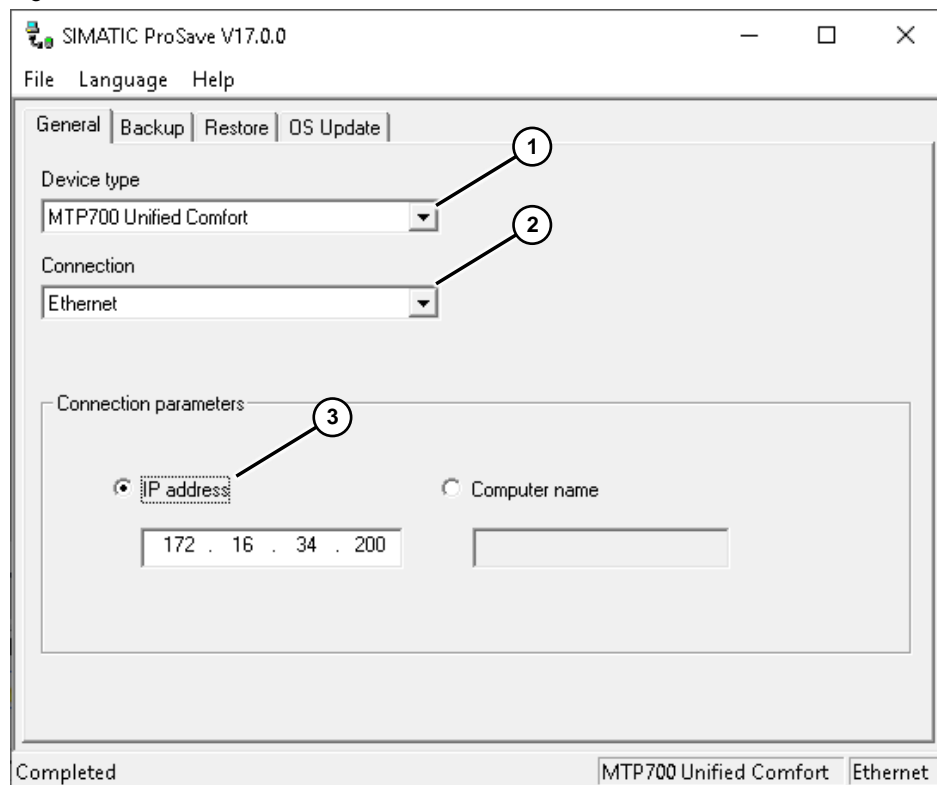
Ensure that the Operator Panel is connected to the PC via Ethernet.

1. Start the ProSave application.
2. Select the "General" tab from the menu bar.
3. (1) Use the "Device type" drop-down list to select the Operator Panel for which you want to restore the data.

(2) Use the "Connection" drop-down list to select the communication connection via which you have connected the Operator Panel to ProSave. In this case, "**Ethernet**".

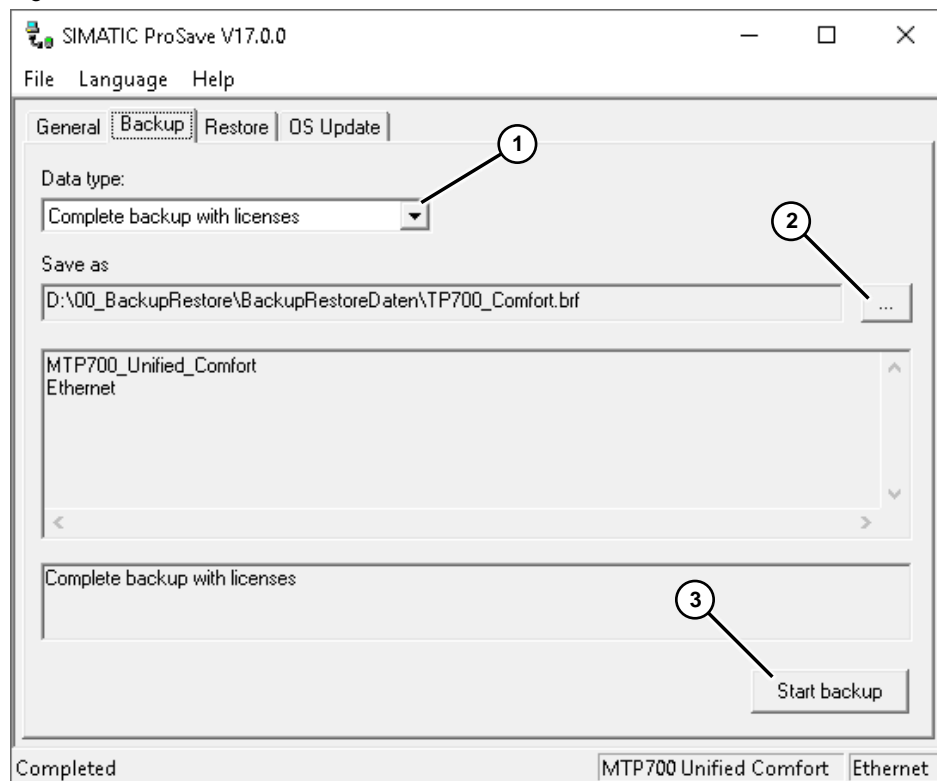
(3) Enter the address of the Operator Panel here. In this example, it is the IP address.

Figure 3-19



4. Select the "Backup" menu from the menu bar.
5. (1) Only the option "Complete backup with licenses" can be selected via the drop-down list.
(2) Use the "..." button to select the storage location. Subsequently, you can specify a name for the backup file.
(3) Start the backup process via the "Start backup" button.

Figure 3-20



After pressing the "Start backup" button, the Operator Panel restarts and the data backup is started.

A dialog box with a progress bar is displayed for each backup file.

After the backup process has been completed, the Operator Panel is restarted.

After the restart, the main window of the Control Panel is displayed.

Operator Panel data is saved on the PC.

3.5.2 Restoring Data

Ensure that the Operator Panel is connected to the PC via Ethernet.

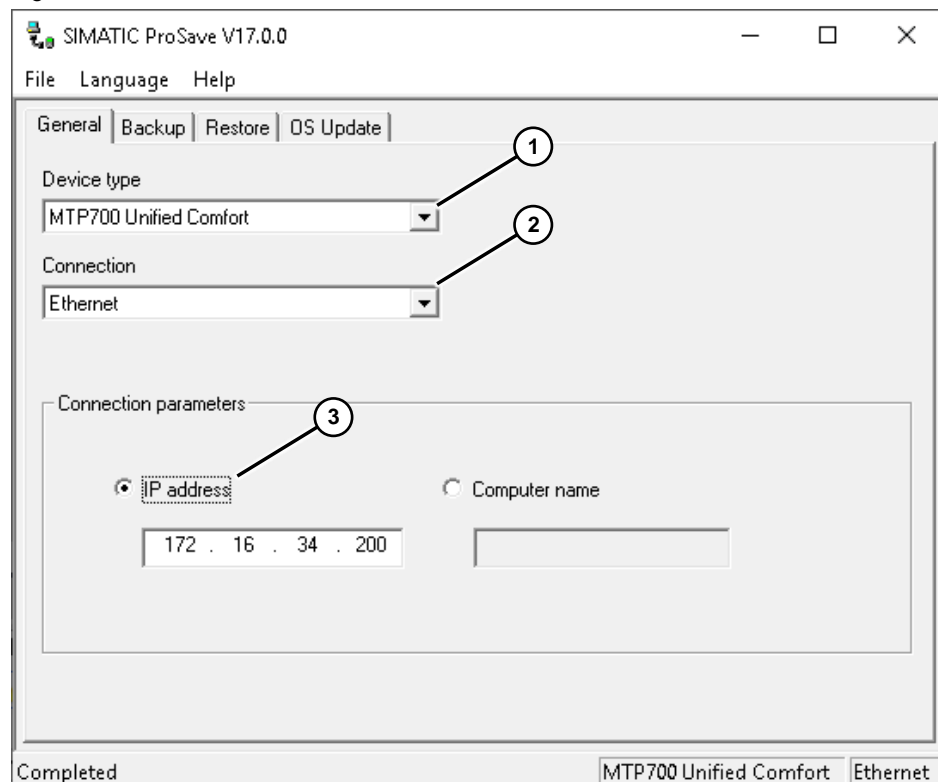
1. Start the ProSave application.
2. Select the "General" tab from the menu bar.
3. (1) Use the "Device type" drop-down list to select the Operator Panel for which you want to restore the data.

(2) Use the "Connection" drop-down list to select the communication connection via which you have connected the Operator Panel to ProSave. In this example, "Ethernet".

- MPI/PROFIBUS DP
- Ethernet
- PN/IO
- S7Usb

(3) Enter the address of the Operator Panel here. In this example, it is the IP address.

Figure 3-21



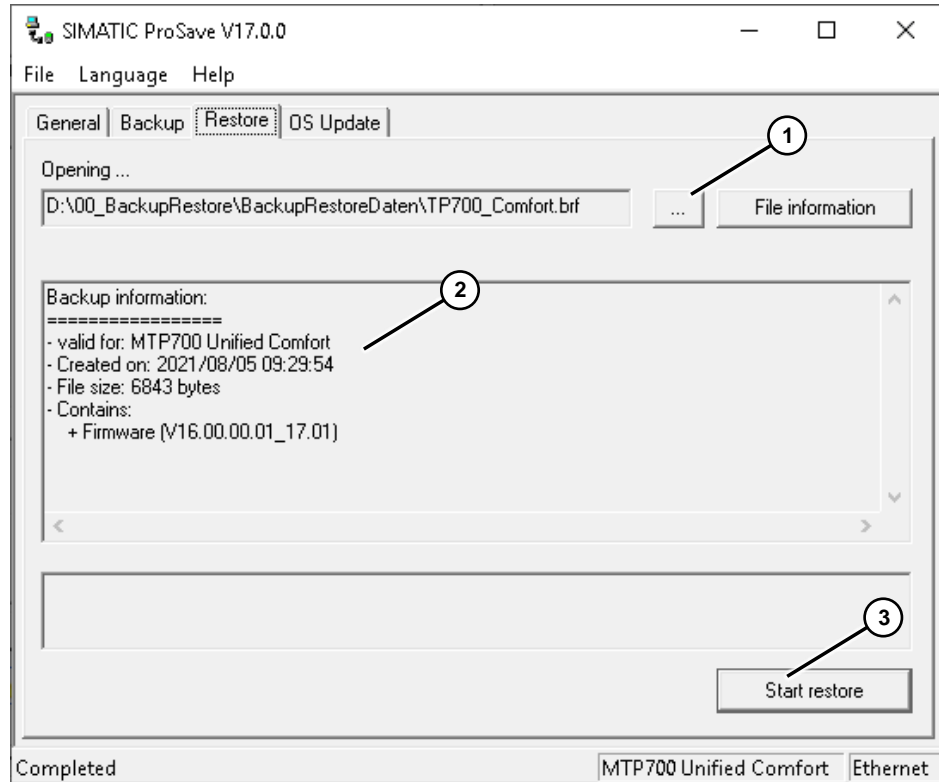
4. Select the "Restore" tab from the menu bar.

- (1) Use the button to select the storage location in which you have saved the "backup file".

(2) After selecting the backup file, information about this backup file is displayed here.

- (3) Press the "Start restore" button.

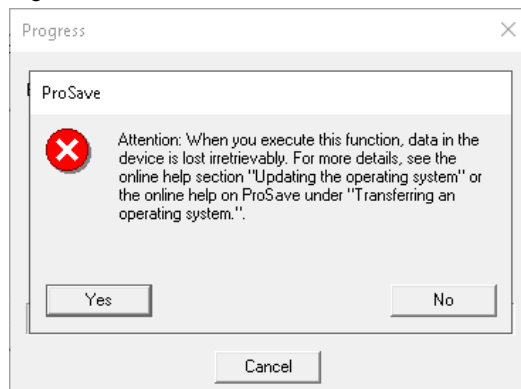
Figure 3-22



- Before the restore process starts, the following message appears. (data and licenses are deleted).

To continue the restore process, press the "Yes" button.

Figure 3-23



After pressing the "Yes" button, the Operator Panel restarts. The restore process then begins.

A dialog box with a progress bar is displayed during the restore process.

After the restore process has been completed, the Operator Panel is restarted again.

After restarting, the main window of the Control Panel is displayed.

The data from the storage medium is now restored on the Operator Panel.

7. After the successful restore process, close the ProSave application.

3.6 Backup/Restore with the SIMATIC Automation Tool

Note

The default settings are described in Section [2.5.1](#).

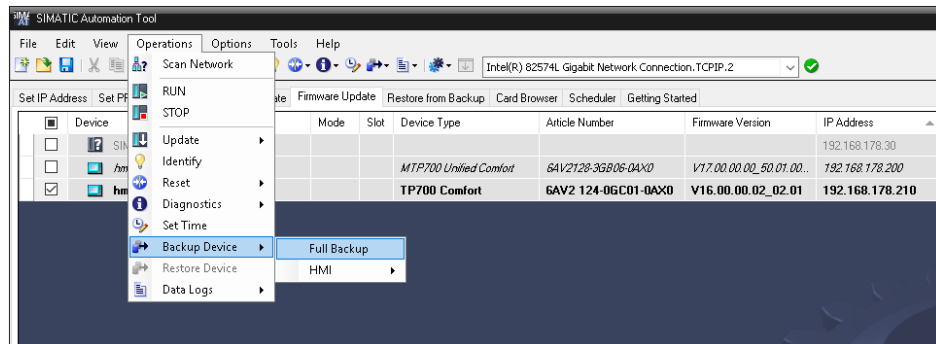
Please ensure that

- the Operator Panel communicates with the SAT via the Ethernet interface.
- the "Ethernet" option is selected in the SAT under "Options > Settings > Communication > Transfer channel".

3.6.1 Creating a Backup

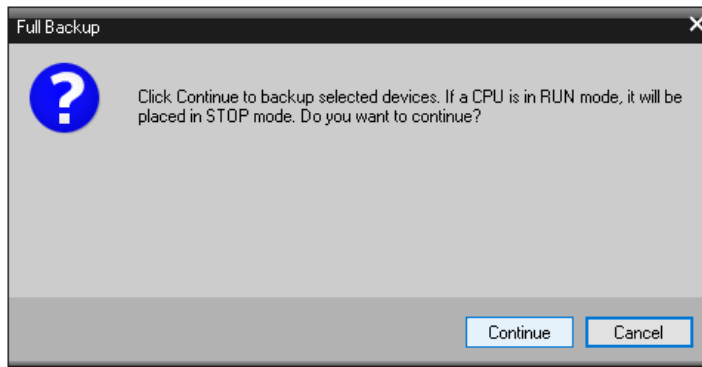
1. Select "Operations > Backup Device > Full Backup" from the menu bar. Alternatively, open the menu via the icon.

Figure 3-24



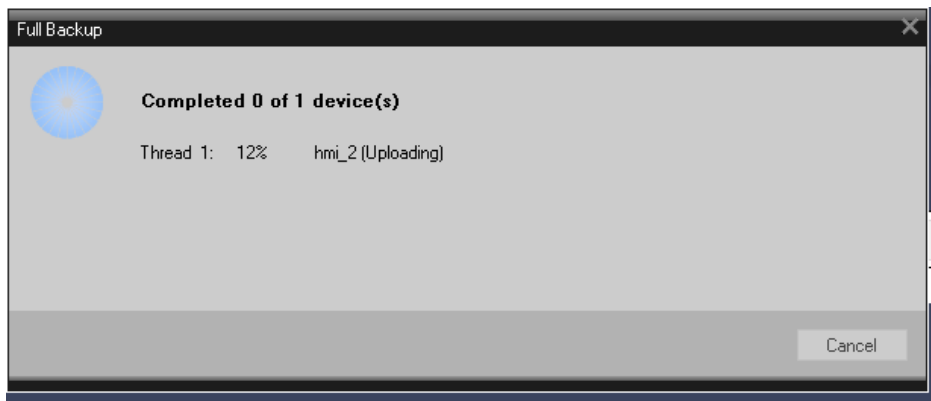
2. The following security query appears. To continue with the process, press the "Continue" button.

Figure 3-25



By confirming with the "Continue" button, the SAT establishes a connection to the Operator Panel and the backup is performed. During the backup, the progress is displayed.

Figure 3-26

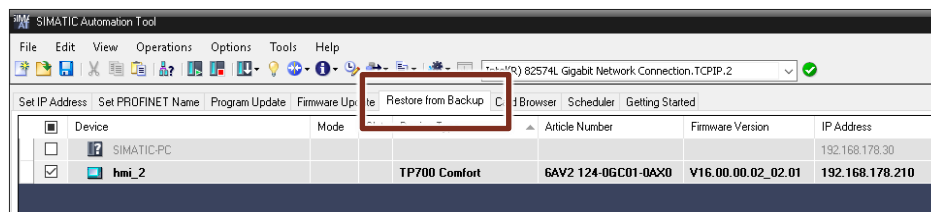


3. After the backup has been completed, the Operator Panel Runtime is automatically restarted.

3.6.2 Restoring Data

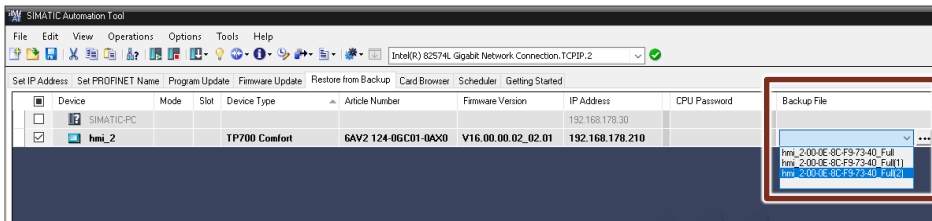
1. Click the "Restore from Backup" tab in the device table.

Figure 3-27



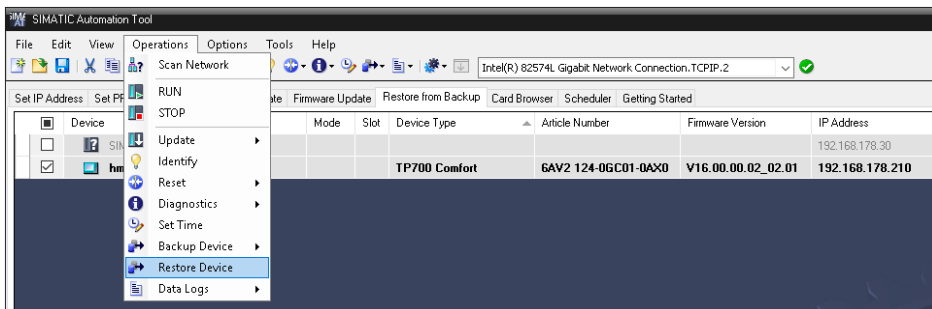
2. Select the "Backup File" column. You can access the backup file via the drop-down window or the button next to it.

Figure 3-28



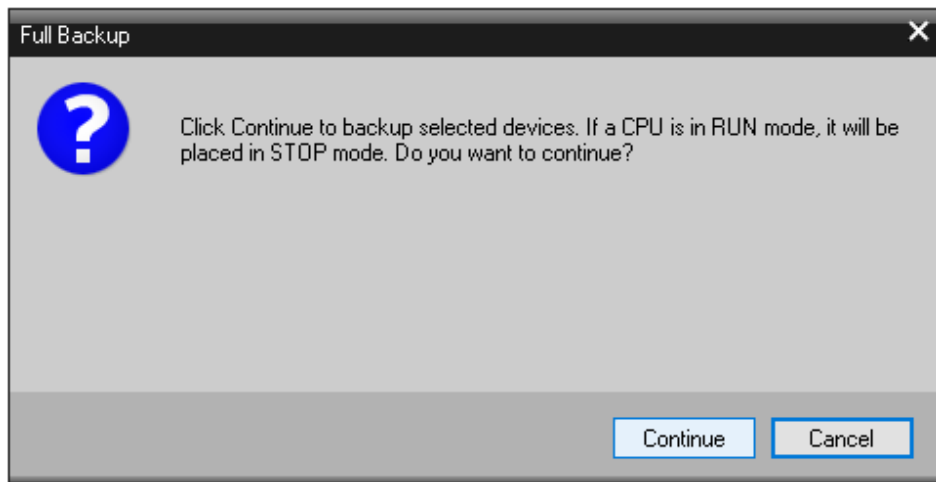
3. Select "Operations > Restore Device" from the menu bar. Alternatively, open the menu via the icon.

Figure 3-29



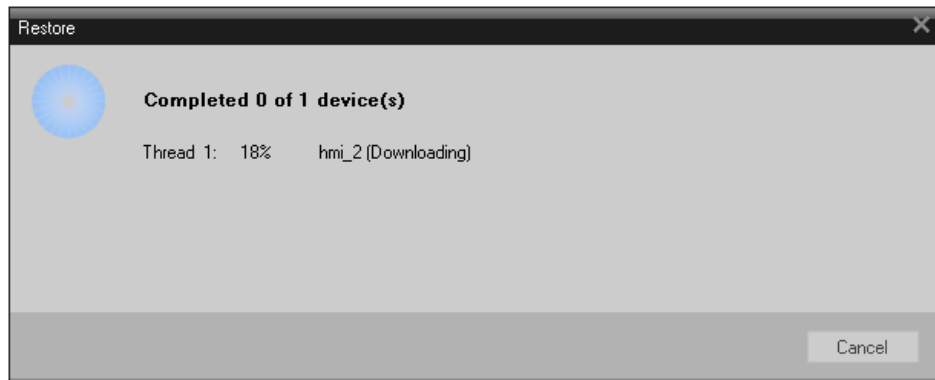
4. The following security query appears. To continue with the process, press the "Continue" button.

Figure 3-30



5. By confirming with the "Continue" button, the SAT establishes a connection to the Operator Panel and the restore is performed. During the process, the progress is displayed with an image.

Figure 3-31



After completion of the restore process, the Operator Panel boots automatically.

4 Appendix

4.1 Service and support

Industry Online Support

Do you have any questions or need assistance?

Siemens Industry Online Support offers round the clock access to our entire service and support know-how and portfolio.

The Industry Online Support is the central address for information about our products, solutions and services.

Product information, manuals, downloads, FAQs, application examples and videos – all information is accessible with just a few mouse clicks:

support.industry.siemens.com

Technical Support

The Technical Support of Siemens Industry provides you fast and competent support regarding all technical queries with numerous tailor-made offers – ranging from basic support to individual support contracts.

Please send queries to Technical Support via Web form:

support.industry.siemens.com/cs/my/src

SITRAIN – Digital Industry Academy

We support you with our globally available training courses for industry with practical experience, innovative learning methods and a concept that's tailored to the customer's specific needs.

For more information on our offered trainings and courses, as well as their locations and dates, refer to our web page:

siemens.com/sitrain

Service offer

Our range of services includes the following:

- Plant data services
- Spare parts services
- Repair services
- On-site and maintenance services
- Retrofitting and modernization services
- Service programs and contracts

You can find detailed information on our range of services in the service catalog web page:

support.industry.siemens.com/cs/sc

Industry Online Support app

You will receive optimum support wherever you are with the "Siemens Industry Online Support" app. The app is available for iOS and Android:

support.industry.siemens.com/cs/ww/en/sc/2067

4.2 Industry Mall



The Siemens Industry Mall is the platform on which the entire Siemens Industry product portfolio is accessible. From the selection of products to the order and the delivery tracking, the Industry Mall enables the complete purchasing processing – directly and independently of time and location:

mall.industry.siemens.com

4.3 Links and literature

Table 4-1

No.	Subject
\1\	Siemens Industry Online Support https://support.industry.siemens.com
\2\	Link to the entry page of the application example https://support.industry.siemens.com/cs/ww/en/view/68373729
\3\	Why must a SIMATIC HMI Memory Card not be formatted and what must be observed when using commercially available memory cards? https://support.industry.siemens.com/cs/ww/en/view/95853895
\4\	SIMATIC ProSave service tool https://support.industry.siemens.com/cs/ww/en/view/10347815
\5\	Unified Comfort Panel instruction manual https://support.industry.siemens.com/cs/ww/en/view/109773257
\6\	Guide for switching from Comfort Panels to Unified Comfort Panels https://support.industry.siemens.com/cs/ww/en/view/109768002
\7\	Which external storage devices can you use with the current SIMATIC Panels, or which memory card interfaces do they have? https://support.industry.siemens.com/cs/ww/en/view/21847868

4.4 Change documentation

Table 4-2

Version	Date	Change
V1.0	09/2021	First version