

SIEMENS

Ingenuity for life

Installation and Operation of WinCC V7.5 / WinCC V15.1 Professional in a Windows Domain

WinCC V7.5 / WinCC V15.1 Professional

<https://support.industry.siemens.com/cs/ww/en/view/78346833>

Siemens
Industry
Online
Support



Legal information

Use of application examples

Application examples illustrate the solution of automation tasks through an interaction of several components in the form of text, graphics and/or software modules. The application examples are a free service by Siemens AG and/or a subsidiary of Siemens AG ("Siemens"). They are non-binding and make no claim to completeness or functionality regarding configuration and equipment. The application examples merely offer help with typical tasks; they do not constitute customer-specific solutions. You yourself are responsible for the proper and safe operation of the products in accordance with applicable regulations and must also check the function of the respective application example and customize it for your system.

Siemens grants you the non-exclusive, non-sublicensable and non-transferable right to have the application examples used by technically trained personnel. Any change to the application examples is your responsibility. Sharing the application examples with third parties or copying the application examples or excerpts thereof is permitted only in combination with your own products. The application examples are not required to undergo the customary tests and quality inspections of a chargeable product; they may have functional and performance defects as well as errors. It is your responsibility to use them in such a manner that any malfunctions that may occur do not result in property damage or injury to persons.

Disclaimer of liability

Siemens shall not assume any liability, for any legal reason whatsoever, including, without limitation, liability for the usability, availability, completeness and freedom from defects of the application examples as well as for related information, configuration and performance data and any damage caused thereby. This shall not apply in cases of mandatory liability, for example under the German Product Liability Act, or in cases of intent, gross negligence, or culpable loss of life, bodily injury or damage to health, non-compliance with a guarantee, fraudulent non-disclosure of a defect, or culpable breach of material contractual obligations. Claims for damages arising from a breach of material contractual obligations shall however be limited to the foreseeable damage typical of the type of agreement, unless liability arises from intent or gross negligence or is based on loss of life, bodily injury or damage to health. The foregoing provisions do not imply any change in the burden of proof to your detriment. You shall indemnify Siemens against existing or future claims of third parties in this connection except where Siemens is mandatorily liable.

By using the application examples you acknowledge that Siemens cannot be held liable for any damage beyond the liability provisions described.

Other information

Siemens reserves the right to make changes to the application examples at any time without notice. In case of discrepancies between the suggestions in the application examples and other Siemens publications such as catalogs, the content of the other documentation shall have precedence.

The Siemens terms of use (<https://support.industry.siemens.com>) shall also apply.

Table of contents

Legal information	2
1 Introduction	4
1.1 Overview.....	4
1.2 Description of the automation task.....	4
1.3 Information on the domains.....	5
1.4 Recommended architecture for WinCC in a domain.....	8
1.5 Components used	9
2 Execution	10
2.1 Setting up the Windows domain on the server system	10
2.2 Installing the domain controller	13
2.3 Setup of the domain controller	20
2.4 Setting up the domain client with WinCC	25
2.5 Remove a computer from a domain.....	26
2.6 Installing WinCC on a domain computer.....	29
2.7 Adding a computer to a domain	30
2.8 Create a domain group.....	33
2.9 Creating Domain Users and Assigning them to a Domain Group	37
2.10 Adding a domain group to a local group	42
3 Appendix	46
3.1 Service and support	46
3.2 Links and Literature	47
3.3 Change documentation	47

1 Introduction

1.1 Overview

Complex IT infrastructure networks with domain controllers are used in many areas of industrial and manufacturing facilities.

A domain controller is a server used to manage central computers or users. This is particularly useful for large networks in which clients have to be managed or administered from a central computer and saves a lot of time and effort.

If WinCC V7.5 or WinCC V15.1 Professional is to be installed or operated on a domain client, certain specifications must be observed.

1.2 Description of the automation task

This manual shows you the possible procedures for using WinCC V7.5 and WinCC V15.1 Professional in a domain. The topics covered in this example are:

- Installing a domain-domain controller (Windows Server 2016 Dataserver LTSC)
- Installing a domain administrator (Windows Server 2016 Dataserver LTSC)
- Removing a domain client from the domain (Windows 10 Enterprise LTSC)
- Installing WinCC V7.5/ WinCC V15.1 Professional on a computer (Windows 10 Enterprise LTSC)
- Adding a computer to a domain as a client (Windows 10 Enterprise LTSC)
- Create domain group (Windows Server 2016 Dataserver LTSC)
- Creating domain users and assigning them to a domain group (Windows Server 2016 Dataserver LTSC)
- Inserting a Domain Group into a Local Group (Windows 10 Enterprise LTSC)

Work through the entire document sequentially. Where points are not necessary for your configuration, you will be informed about it in the corresponding chapter.

Note

The name LTSB (Long-term Servicing Branch) was officially renamed LTSC (Long-term Servicing Channel) by Microsoft. Nothing changes in the systems except the designation. Additional information is available at the following link:

<https://docs.microsoft.com/en-us/windows/whats-new/ltsc/>

1.3 Information on the domains

A domain is the top-level authentication instance in a Microsoft domain network.

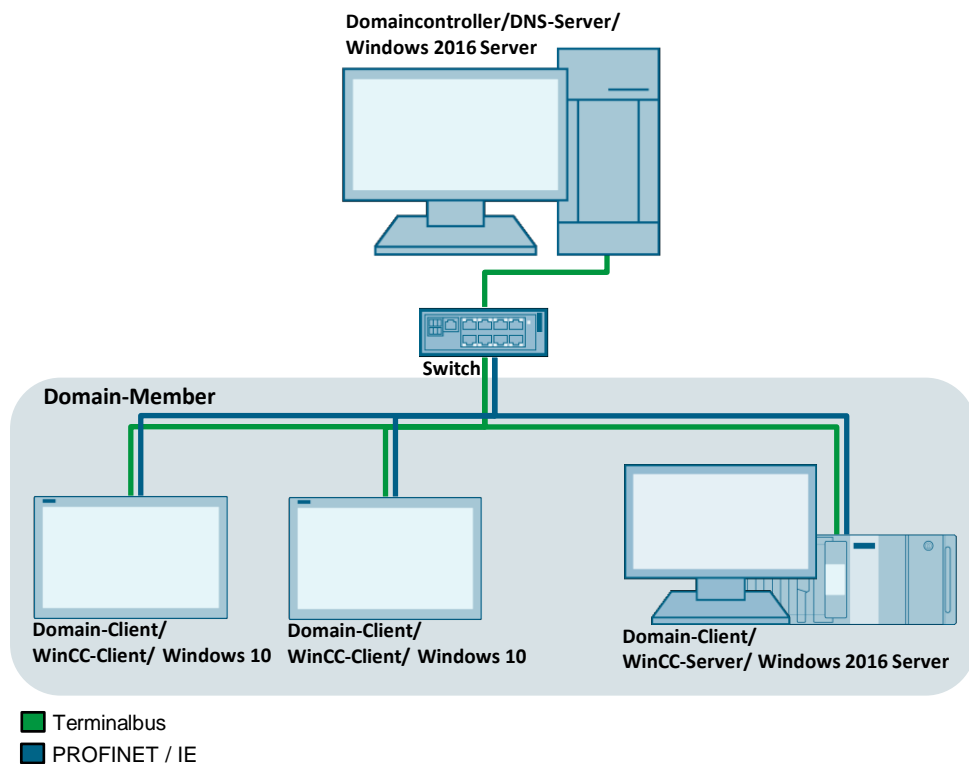
This means that any user can log on to any computer that is a member of the domain. User profile, settings and access rights are loaded by the domain controller.

The connected clients and the associated security settings can be managed centrally by the domain controller.

Setting up a domain makes sense from about 10 computers on, or if several computers are physically far apart. Then the administration of the computers over a domain is more time-saving than the administration manually on the individual computers. For more information on the various topics regarding a domain, see the following sections. The following figure shows you how the network can be structured with WinCC as an example.

Note Domain servers should always be redundant to avoid downtime in case of failures.

Figure 1-1



Workgroup and domain

To work in a network with Windows operating system, the computers must belong to a workgroup or domain. The main difference between these two user administrations is the central distribution of resources, such as access to directories, printers or Internet access and the ability to manage the security settings of execution rights, access information or group policies.

Main features of Workgroup

- No computer has control over another computer in the workgroup.
- Each computer has a number of user accounts. Only users with user accounts can use the computer. The user accounts can be managed by one (or more) main user(s).
- Workgroups are local networks.
- Joining a workgroup is done without access control.

Main features of domains

- **Domain controller**
In a domain, the domain controller is a server on which the central headquarters for security and privileges of all user profiles and computer accounts of the domain are maintained.
- **Domain administrator**
 - Changes to the domain controller/server are only made by an employee authorized by the company, the domain administrator.
 - Permissions and group policies for each user profile are set only by the domain administrator, either centrally on the domain controller/server or on each local computer. These changes are automatically applied when each domain user logs on.
- **Domain group:**
 - A group within the domain to which domain users are assigned.
 - Are assigned to local groups on the domain clients to inherit the contained local rights to the domain users.
 - Serves as a link between domain users and local groups to simplify rights management
- **Domain user:**
 - A user who successfully logs on to a domain using a user profile is referred to as a domain user.
 - All domain users are assigned a predefined user profile by the domain administrator. (Domain client)
 - Domain users can only log on to the domain using the assigned password-protected user profile.
 - Domain users must enter a password each time they log on to the domain (for example, after activation from standby).

- **Computer:**
 - The domain administrator determines which domain user can log on to which computer in a domain.
 - Domain users can only log on to a domain on authorized computers.
 - The authorized computers are included in a domain based on their computer names.
 - The computers of each domain user can be on different local networks.

Selection of workgroup or domain

If a network has a large number of users and different resources, the domain model is suitable for simplified and clear management of the network.

In a domain, you can centrally make certain resources such as access to directories, printers, or Internet access with predefined authorizations available to the respective user groups with the associated user profiles.

1.4 Recommended architecture for WinCC in a domain

The following figure illustrates the recommended structure of a domain network.

The domain users are created on the domain controller and assigned to different domain groups. These domain groups are then assigned to different local groups on the domain client. These groups and thus also the assigned domain users have the respective rights on the clients.

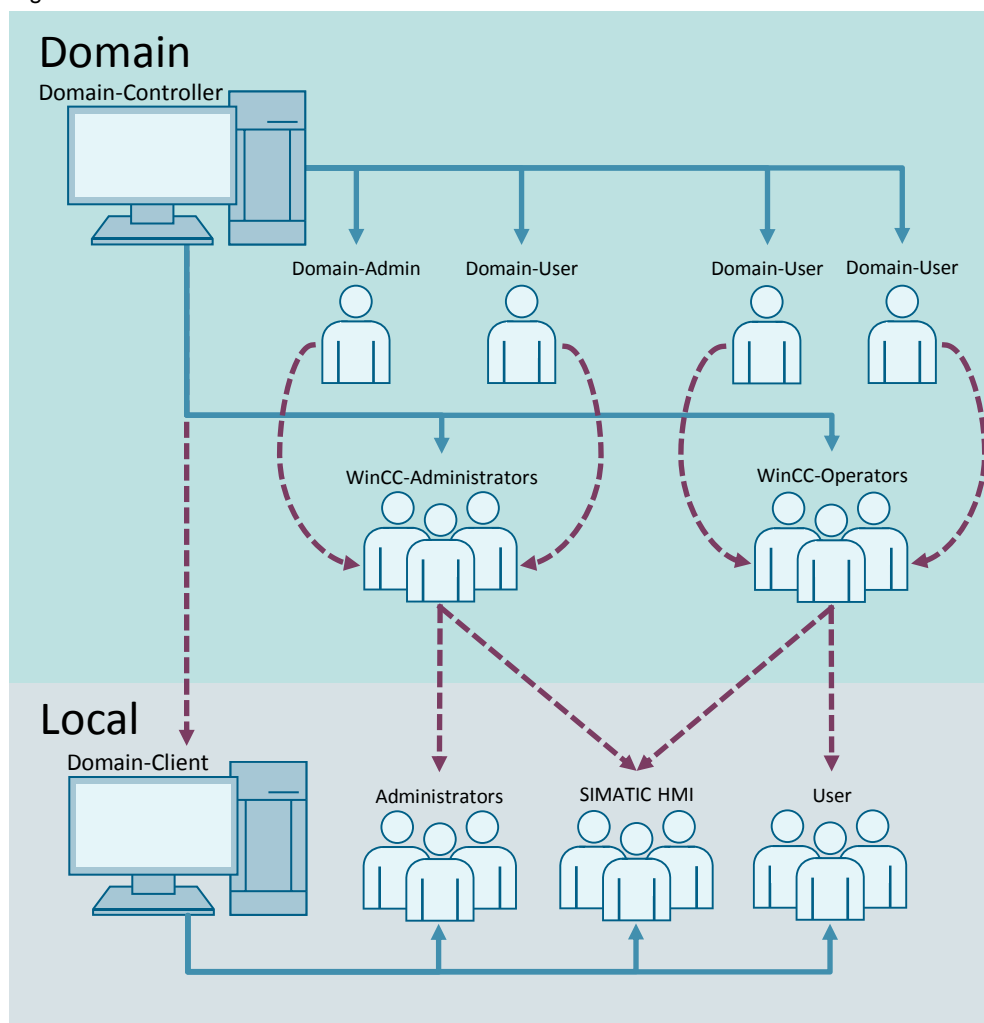
This means that the domain administrator can give individual domain users access rights to different clients by adding them to domain groups.

Note

More information on this topic can be found under this link:

<https://support.industry.siemens.com/cs/ww/en/view/22229786> section 4.1

Figure 1-2



1.5 Components used

Since the configuration in this application example is only exemplary, the domain network was created with only two computers. In general, you should run your domain server redundantly to avoid failures. The number of domain clients and domain users should also be considerably higher, so that the effort to operate a domain is worthwhile.

The following hardware and software components were used to create this application example:

Table 1-1

Components	Article number	Note
Windows 2016 Dataserver LTSC (LTSC)		"Domain controller"
Windows 10 LTSC (LTSC)		"Domain client"

2 Execution

2.1 Setting up the Windows domain on the server system

This section describes how to create a domain controller on the server operating system. Key points and screenshots support you during the configuration.

Note

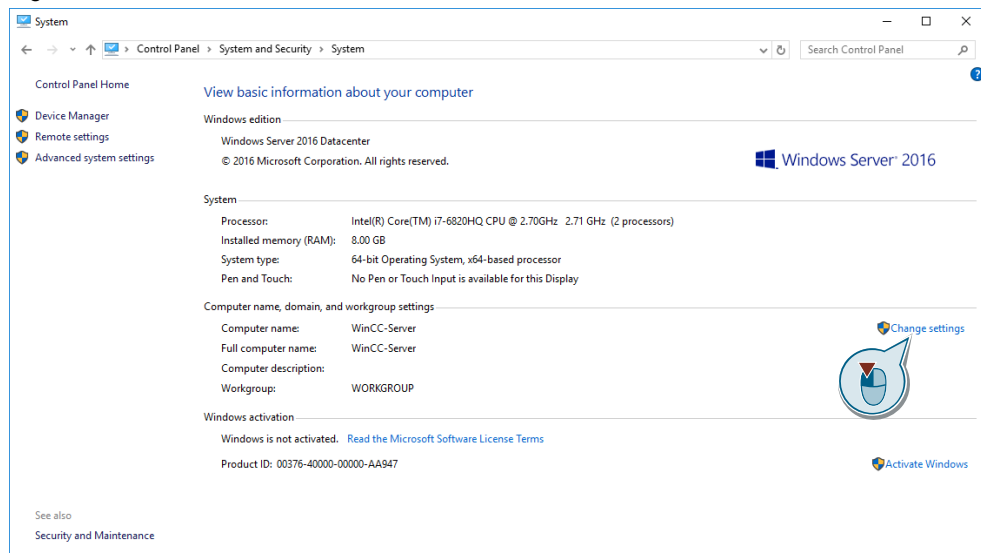
During the installation and setup of the "Active Directory Domain Service" (AD DS), a DNS server is automatically created on the server, which is why the manual setup of the DNS server is not discussed further in this document.

Establishing namesfor computers

Before you set up the domain controller, give the computer a unique name. This makes it easier to set up and avoids problems. The name of the domain controller cannot be changed after setup.

1. You can change the name in Control Panel > System and Security > System. Click the "Change settings" entry.

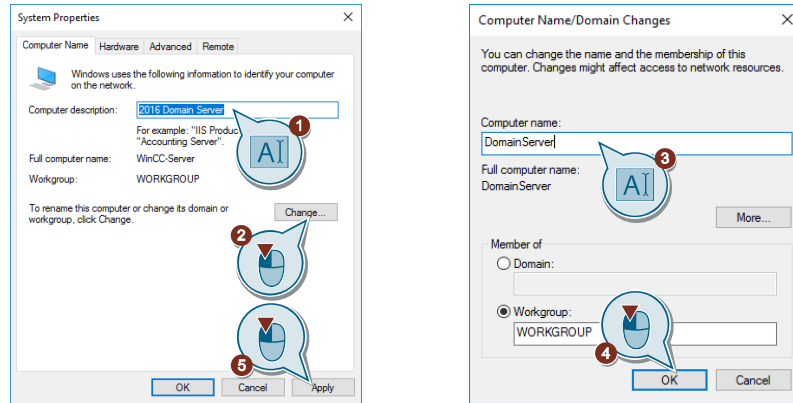
Figure 2-1



2. A window with the system properties opens. Enter a suitable description for your computer in the "Computer description" field. (1) "Click on the "Change" button in this window. (2) (see [Figure 2-2](#))

3. This will open another window called "Computer Name/Domain Changes". In the "Computer name" field, enter the desired name for the domain controller.
- (3) Exit the window via the "OK" button.
- (4) Confirm your changes in the system properties window with the "Apply" button.
- (5) A pop-up window will appear prompting you to restart your computer to apply the changes you have made. Restart the computer before proceeding with the domain controller setup.

Figure 2-2



Result

You have assigned a fixed name to your computer. This name serves the uncomplicated identification of the domain controller in the network. Continue with assigning a fixed IP address.

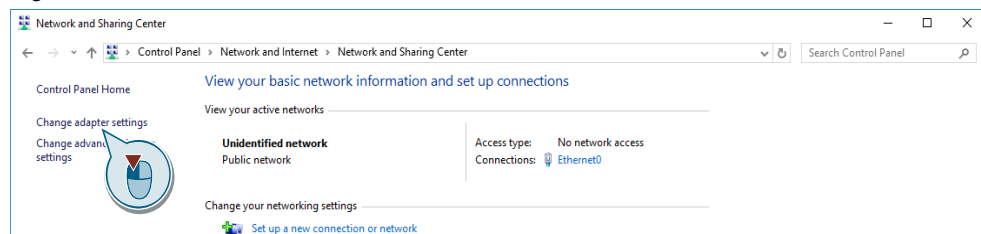
Assigning a fixed IP address.

To use the computer later as a server, you must define a static IP address for the computer.

Since the configuration in this application example is only exemplary, fixed IP addresses were assigned for both computers. In a real system, only the domain controller has a fixed IP address. The IP address for the connected clients is assigned by the domain controller via DHCP.

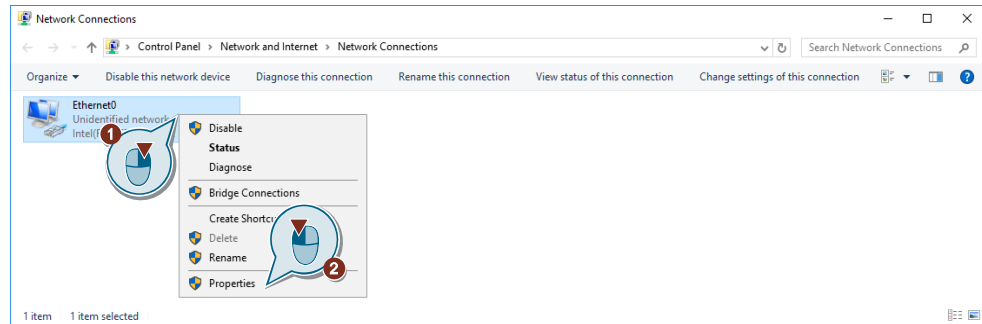
1. You can change the IP address in Control Panel > Network and Internet > Network and Sharing Center. Click the "Change adapter settings" entry.

Figure 2-3



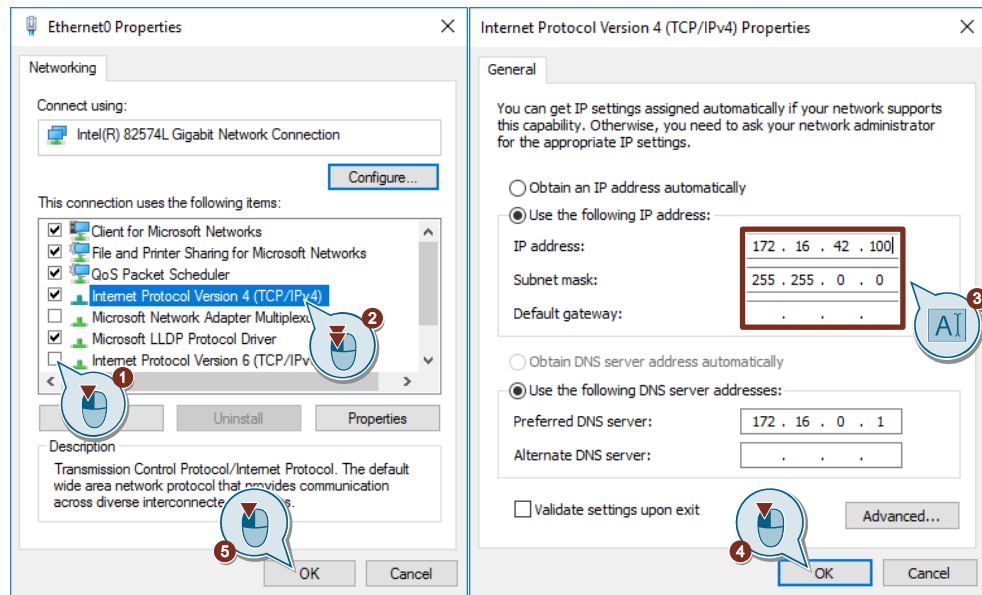
- This opens an overview of the computer's network adapters. Right-click on the adapter you are using. (1) Choose the "Properties" option from the shortcut menu. (2)

Figure 2-4



- The window with the adapter settings opens. Disable the IPv6 protocol. (1) Open the IPv4 protocol properties with a double click on the entry. (2) Assign the computer a fixed IP address, subnet mask and the default gateway, if available. (3) Confirm your IPv4 settings with the "OK" button. (4) Confirm your adapter settings with the "OK" button. (5)

Figure 2-5



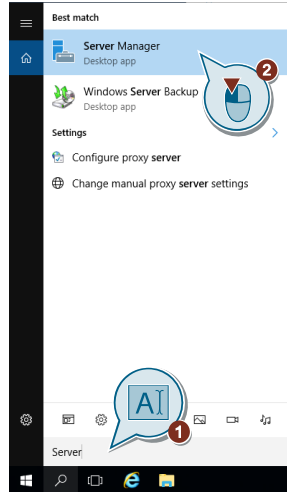
Result

You have assigned a fixed IP address (IPv4) to your computer and can continue with the installation of the AD DS.

2.2 Installing the domain controller

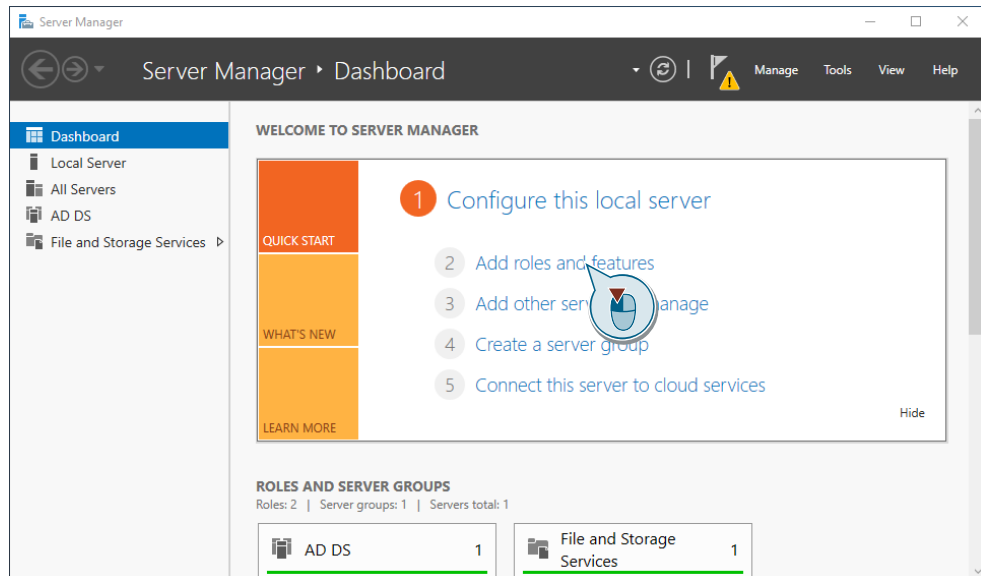
1. Open the Windows "Server Manager". To do this, enter the term "Server" in the Windows search. (1) Then click on the "Server Manager" entry. (2)

Figure 2-6



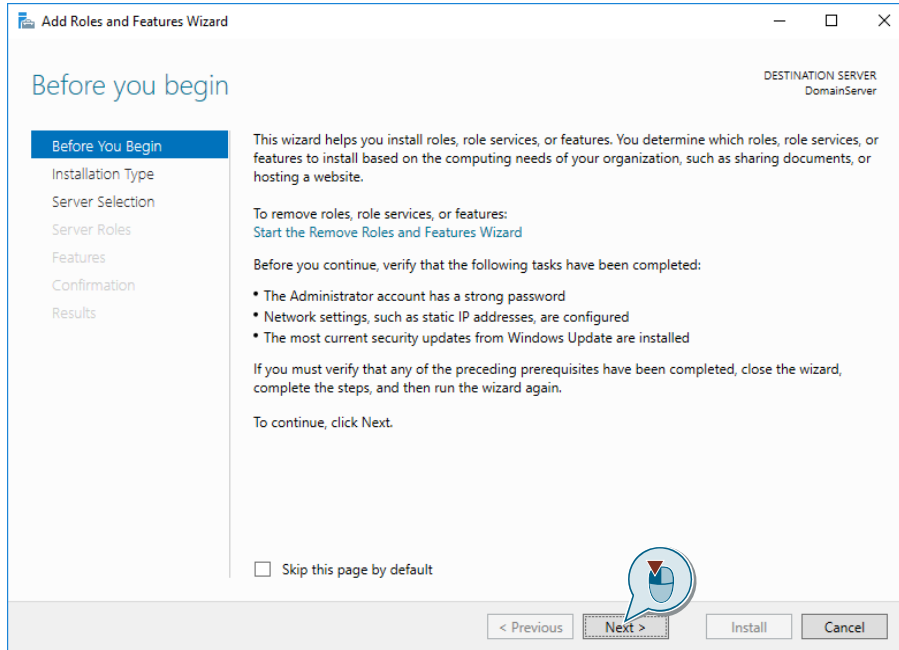
2. The Windows "Server Manager" opens. Click on "Add roles and features".

Figure 2-7



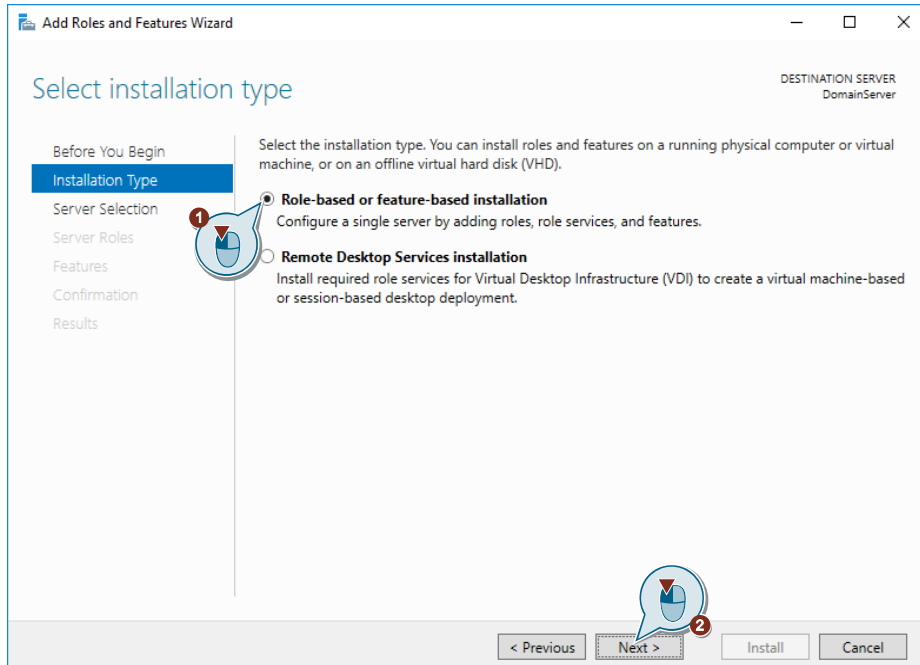
- The "Add Roles and Features Wizard" window opens. Click the "Next" button to continue setting up the domain server.

Figure 2-8



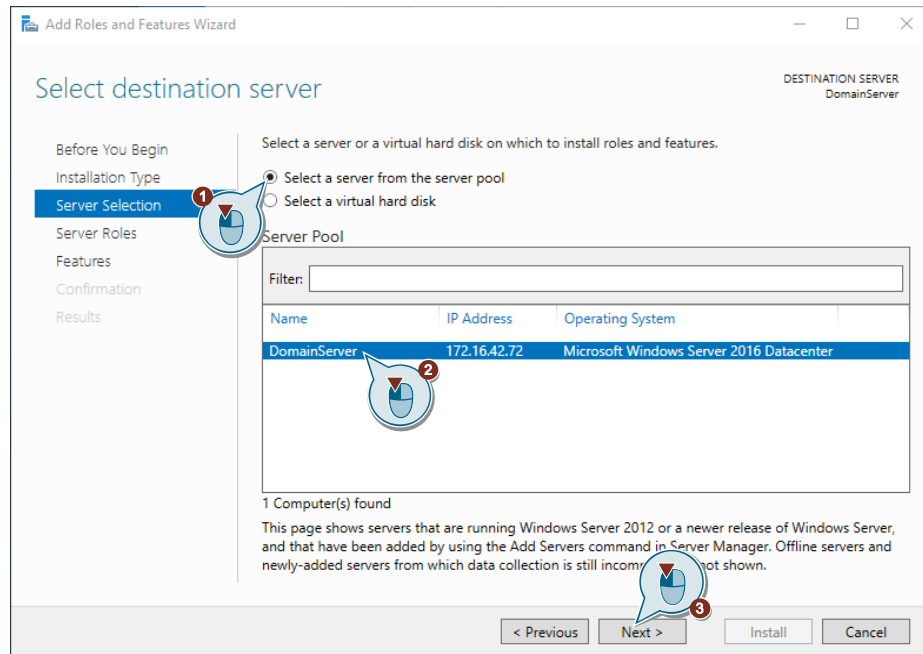
- In the following "Installation Type" window, select the "Role-based or feature-based installation" option. (1) Continue with the setup by pressing the "Next" button. (2)

Figure 2-9



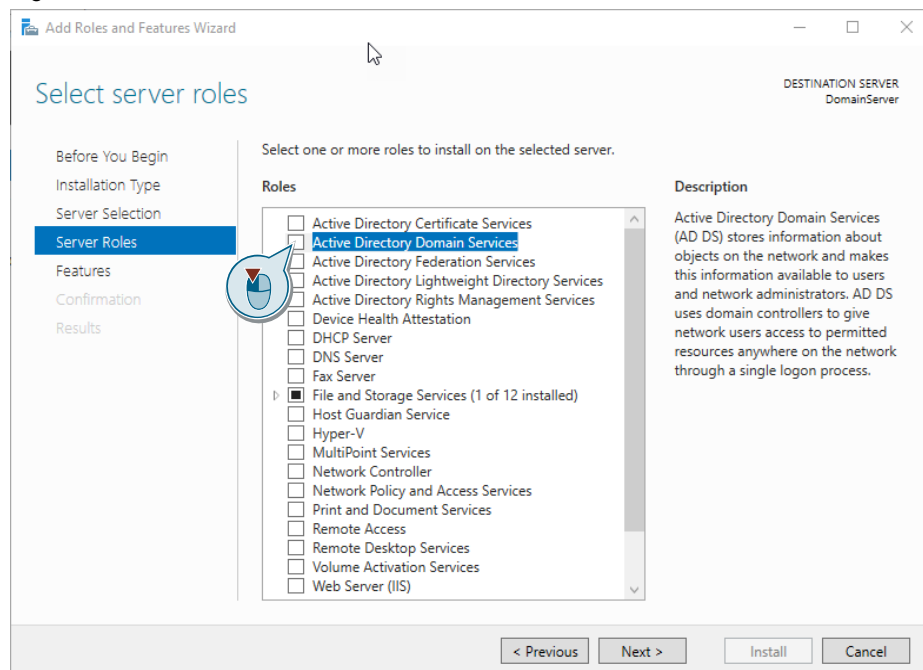
- The "Select destination server" window appears. Activate the "Select server from server pool" option. (1) Select the computer from the list of available servers that you want to make the domain server. (2) Continue with the setup by pressing the "Next" button. (3)

Figure 2-10



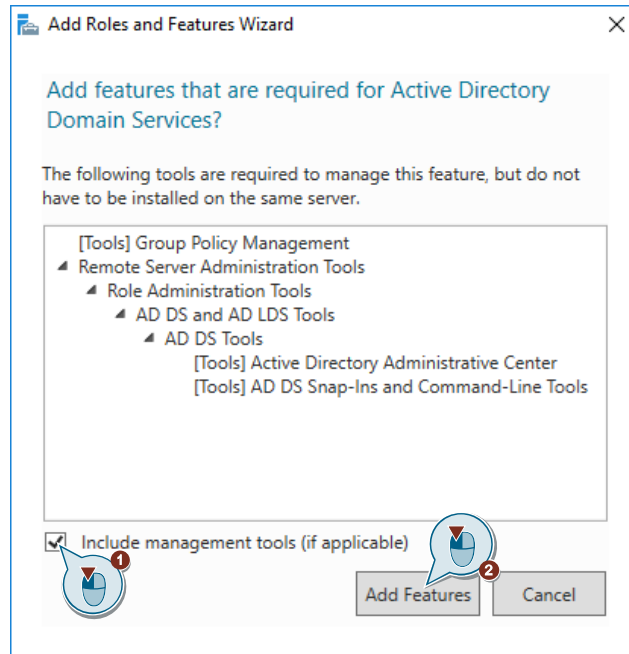
- The "Select server roles" window opens and you can use it to assign various tasks to the server. Click on the "Activate Directory Domain Services" box.

Figure 2-11



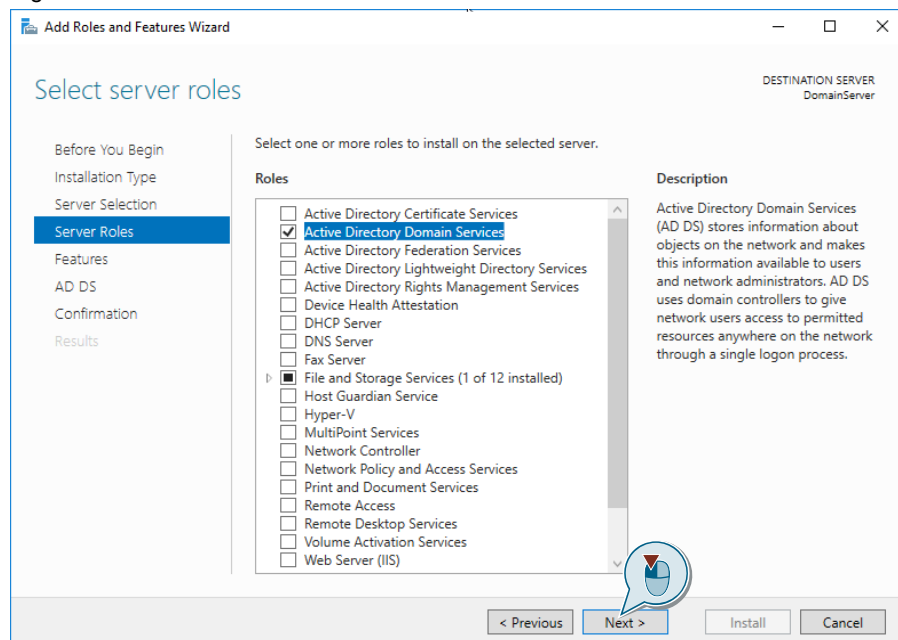
- Once you select this option, a pop-up window will appear listing which software components will be installed on your system by adding the feature. With one click activate the option "Include management tools (if applicable)". (1) Confirm the addition of the domain service by clicking the "Add Features" button. (2)

Figure 2-12



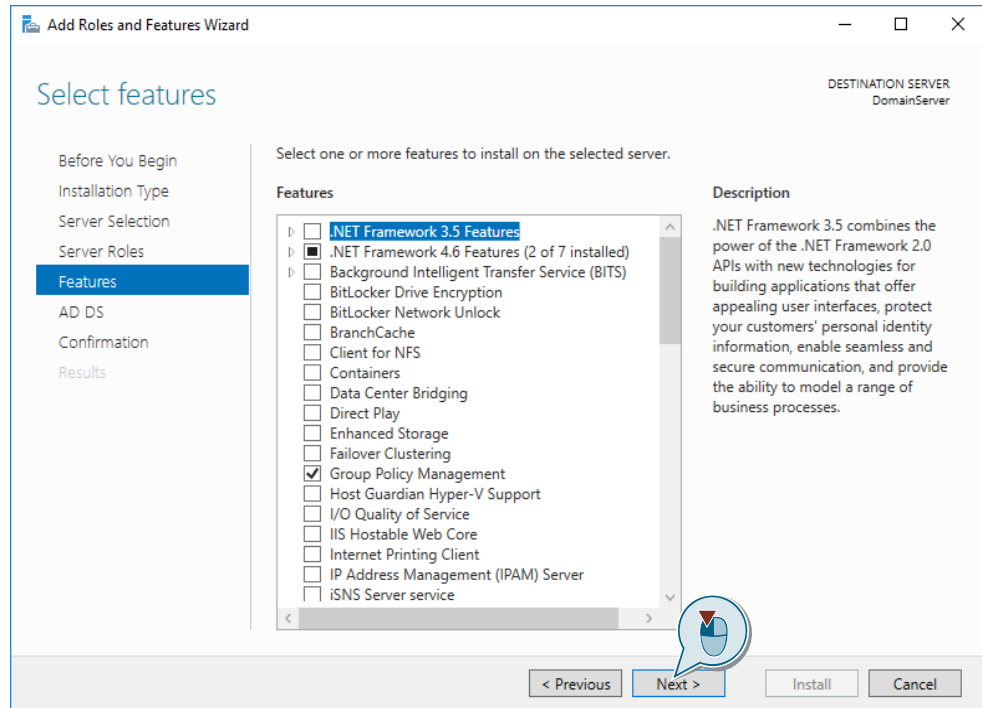
- You will then be redirected to the previous window. The option "Active Directory Domain Services" is now selected. Continue with the setup by pressing the "Next" button.

Figure 2-13



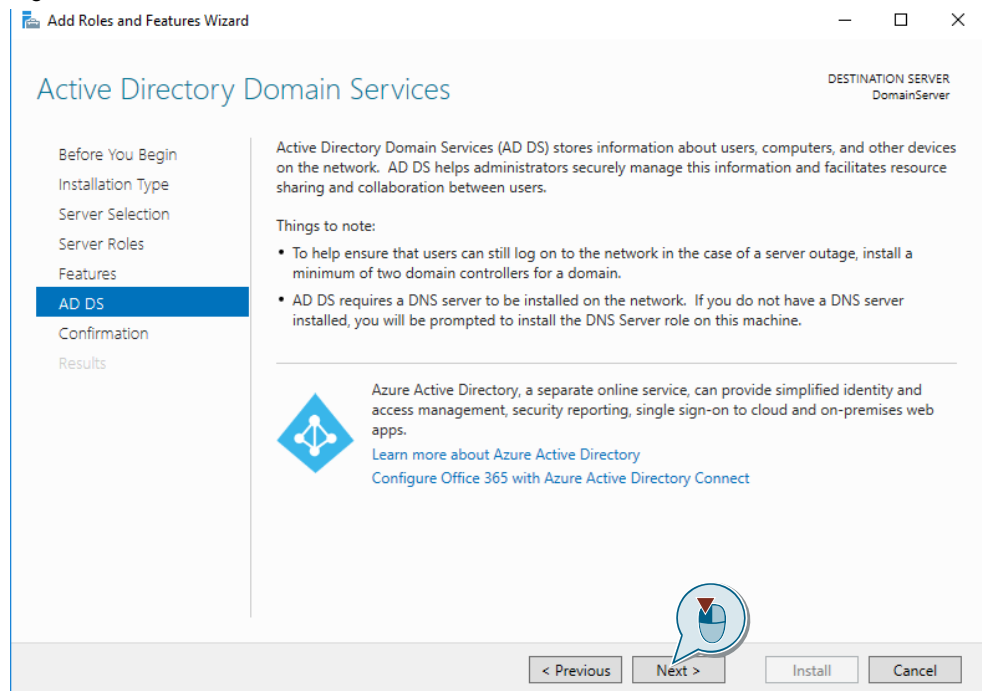
- The next window is a selection screen of the Windows features. Leave these unchanged for the setup of the domain server and continue with a click on the "Next" button.

Figure 2-14



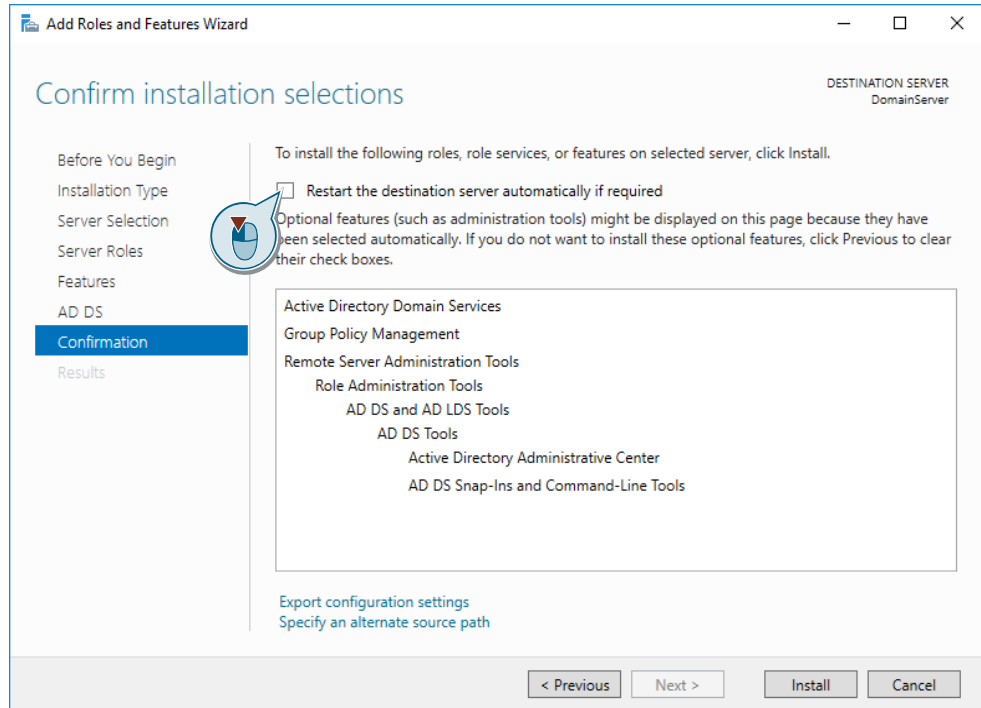
- The following screen provides information about "Active Directory Domain Service". Continue by clicking on the "Next" button.

Figure 2-15



- In the following window you will be asked to confirm the installation of the various components in the system. The individual components are listed again in a window. Select the option "Restart the destination server automatically if required".

Figure 2-16

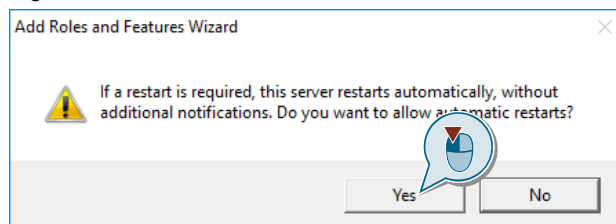


- A pop-up window opens with a warning that the server will restart if necessary without any further message. If you agree, confirm this with the "Yes" button.

Note

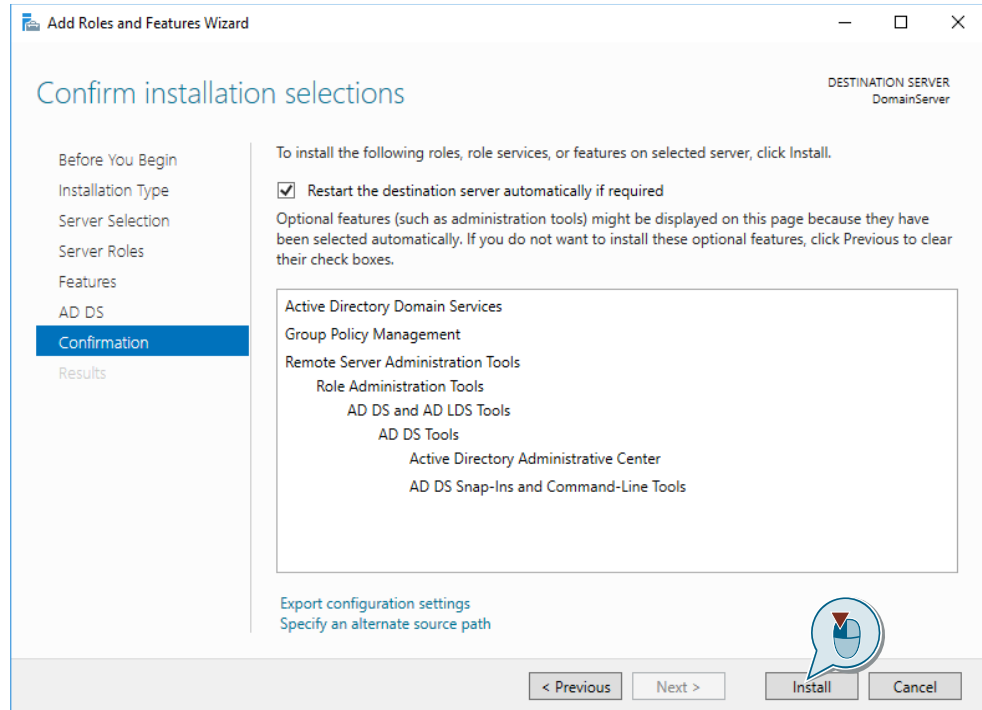
Make sure that no applications are running on the target system that are important for the functionality of your system and must not simply be switched off.

Figure 2-17



13. After confirming the warning, check the option. Now install the "Active Directory Domain Service" and the other elements by clicking on the "Install" button.

Figure 2-18



14. Wait for the installation of the individual components.

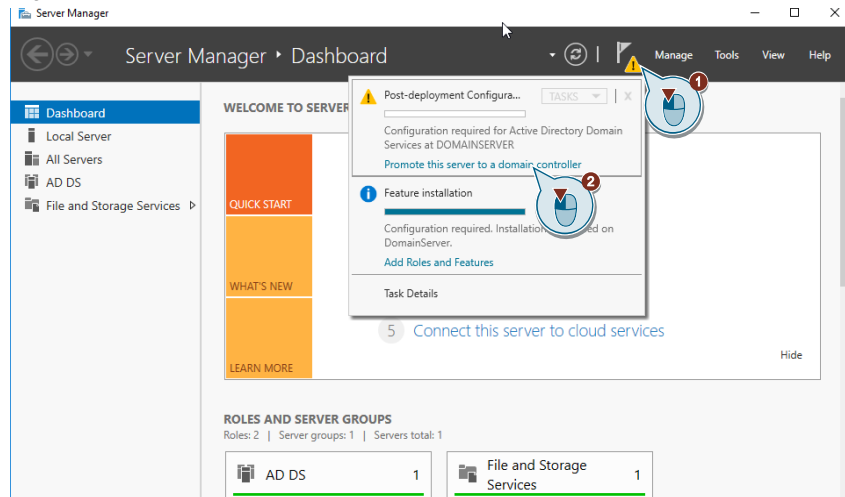
Result

You have completed the installation of the components required to use your server as a domain controller and can proceed with the setup.

2.3 Setup of the domain controller

1. Open the Microsoft Server Manager. After installation, a yellow warning icon appears at the top of the Server Manager with an exclamation mark on the flag button. Click the button with the flag. (1) Click on the entry "Promote this Server to a domain controller" in the context menu that opens. (2)

Figure 2-19

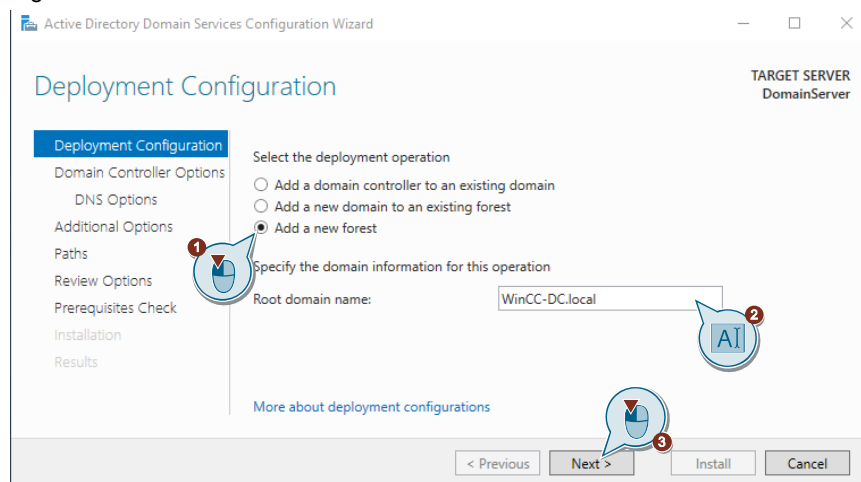


2. The "Directory Domain Service Configuration Wizard" opens. Select the option "Add a new forest". (1) Assign a root domain name. (2) Click on the "Next" button to continue with the setup. (3)

Note

Further information on the guidelines for domain name allocation can be found under the following link: <https://support.microsoft.com/en-gb/help/909264/naming-conventions-in-active-directory-for-computers-domains-sites-and>

Figure 2-20

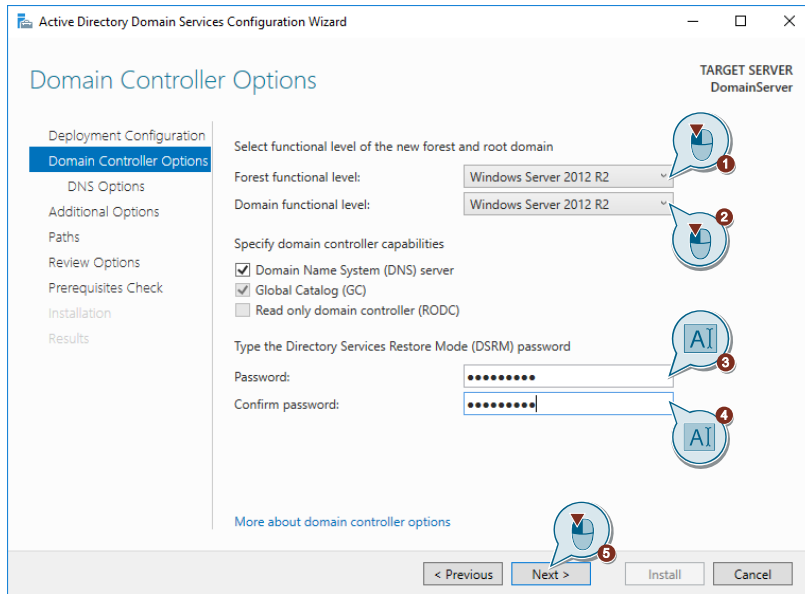


3. In the options menu of the domain controller, select the "Forest functional level" and the "Domain functional level". (1) (2) Assign and confirm the DSRM password. (3) (4) Continue by clicking on the "Next" button. (5)

Note

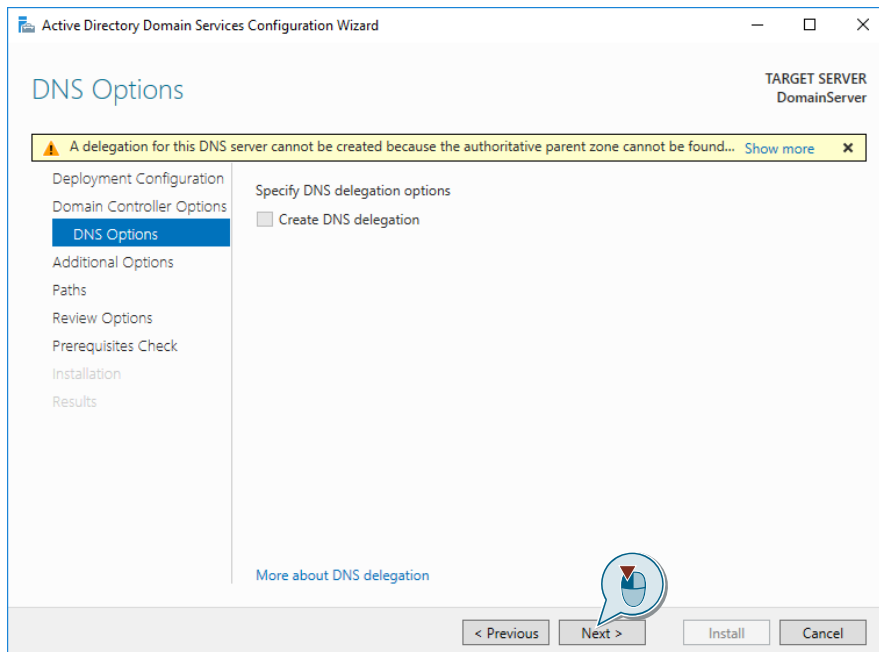
The overall structure level and the domain function level must always correspond to the architecture of the oldest server that has administrative functions in the domain.

Figure 2-21



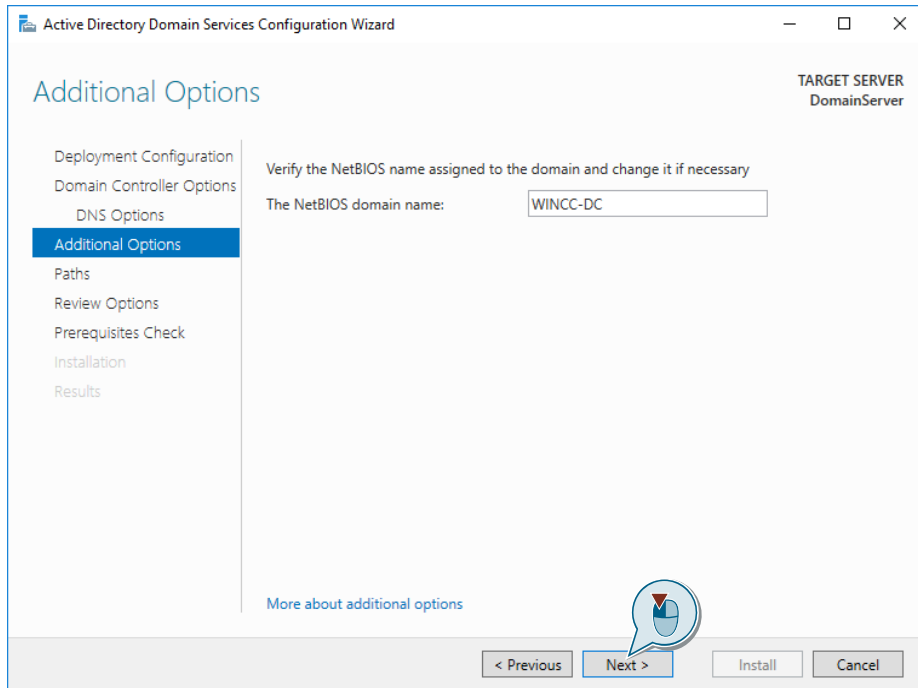
4. Continue with the "Next" button in the following window.

Figure 2-22



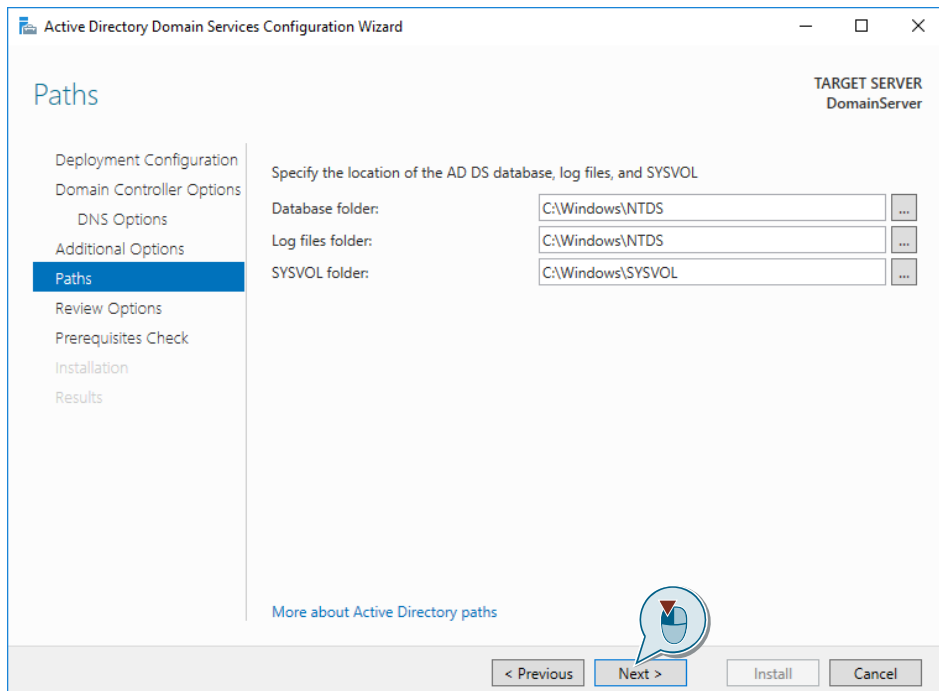
5. The following window displays the NetBIOS domain name. This corresponds to a modified form (abbreviated and with uppercase letters) of the Root Domain Name entry in step 2. Leave this one as is. Continue with the "Next" button.

Figure 2-23



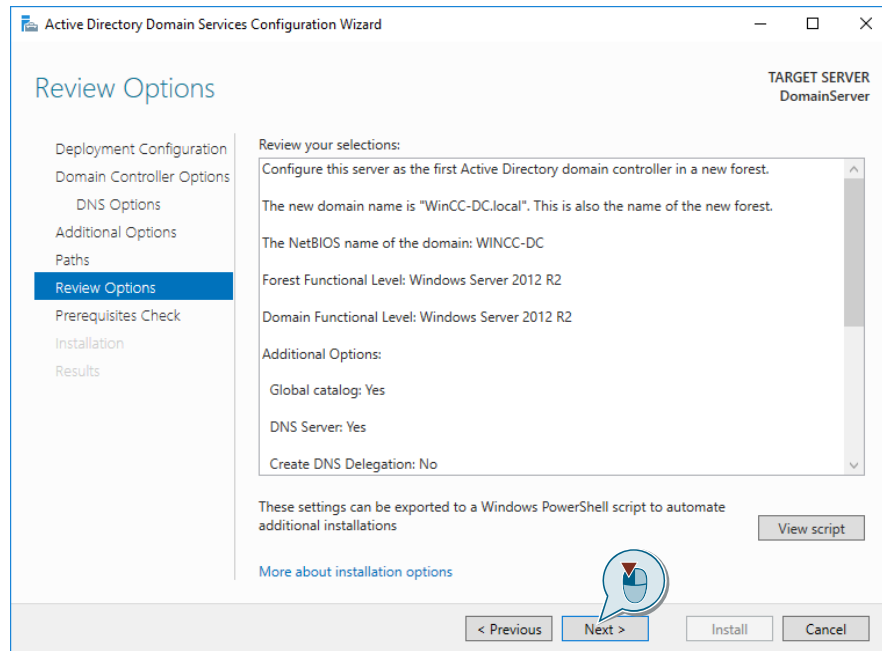
6. The following window displays the paths in which the AD DS stores various data. Leave the paths as they are. Continue with the "Next" button.

Figure 2-24



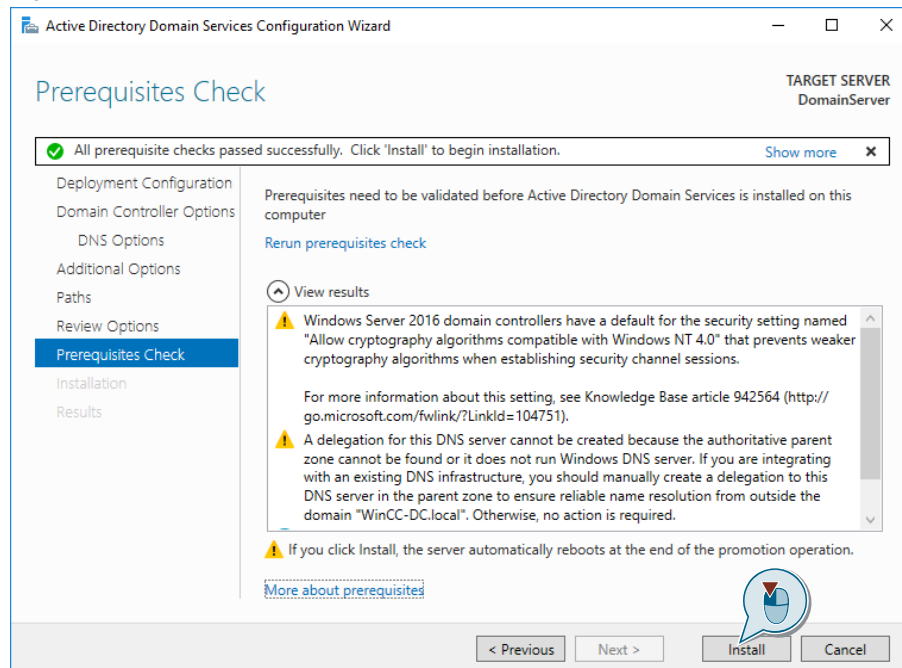
- In the following window, you can view the settings you have just made again. Continue with the "Next" button.

Figure 2-25



- The following window checks the installation requirements for Active Directory Domain Services. Wait until the check is completed. After the check, you can see useful hints for the settings made and the upcoming installation in the display window. Continue with the installation by clicking on the "Install" button. Your computer restarts after the successful installation.

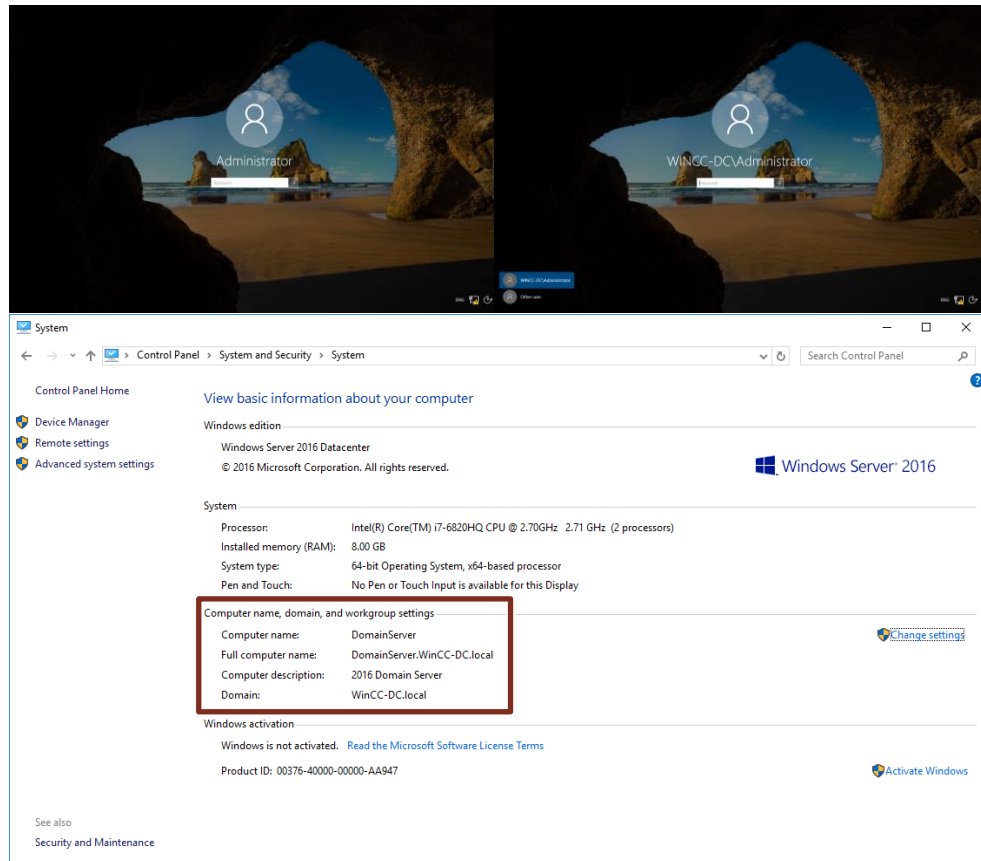
Figure 2-26



Result

You have successfully set up your domain controller. When you start the computer in the login area, you will see that the name of the computer is changed from "Administrator" to "Domain name\Administrator", for instance. This user was automatically added to the created domain with the installation. This user also has the administrative rights for the domain. You can also find this information in the System section of the Control Panel. (framed in red [Figure 2-27](#)) Registration is now only possible with the defined netBIOS password.

Figure 2-27



2.4 Setting up the domain client with WinCC

Adapter settings in the domain client

The adapter settings must also be configured on the domain clients. Since the client is a system on which WinCC is to be operated, it is necessary to assign a fixed IP address. The server must also be made known to the client. If the computer has already been a member of the domain, you can skip this section.

Note If the IP addresses for the connected clients with active runtime are assigned via DHCP, then only in connection with "**fixed reservations**". The background is that WinCC or WinCC Runtime V7.5/V15.1 does not work with changing IP addresses.

1. Open the IPv4 settings of the used interface of the domain client. To do this, follow steps 1-3 from Chapter 2 Section "Assigning a Fixed IP Address".
2. In the IPv4 settings, assign the domain client its own static IP address, a subnet mask and, if available, the default gateway of your system. (1)
3. In the Preferred DNS server field, enter the IP address that you have assigned to the domain server when using the DNS server provided by the domain server, as in this example.

Note Make sure that the domain server and domain client are in the same network, but have different IP addresses.

Result

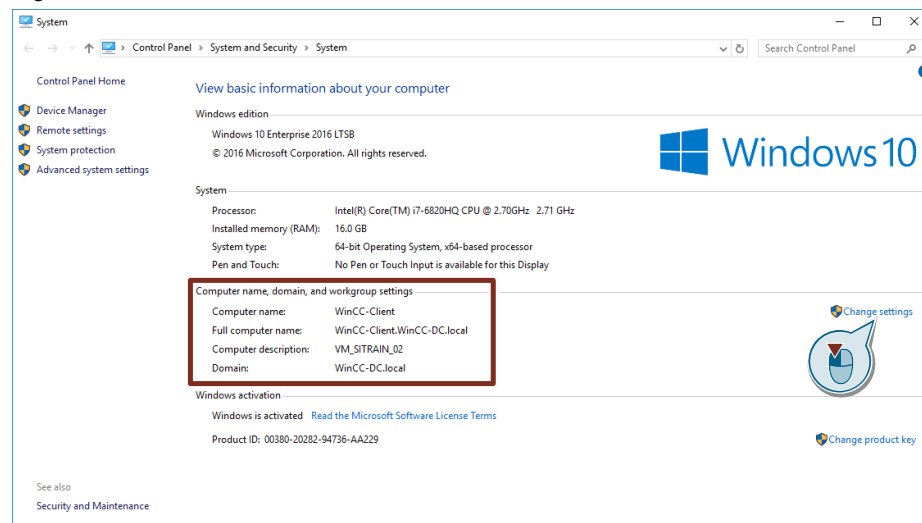
You have successfully configured the Ethernet adapter of the client computer and can continue integrating the computer into the domain.

2.5 Remove a computer from a domain

If your computer is already a member of a domain and you want to install WinCC on it, it is necessary to remove the computer from the domain beforehand and later include it again. The reason for this is that group policy and domain policies can interfere with the correct installation. If the computer is not yet a member of the domain, continue with chapter [2.6](#) fort. You can see this in the system properties. (framed in red [Figure 2-28](#)).

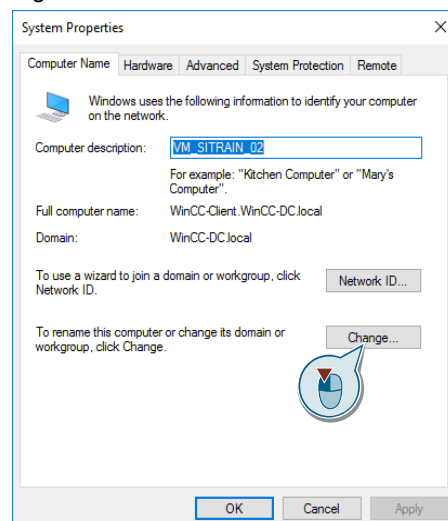
1. Open the system properties. You can find these in the path "Control Panel > System and Security > System". In the Computer name, Domain, and Workgroup settings area, click the Change settings button.

Figure 2-28



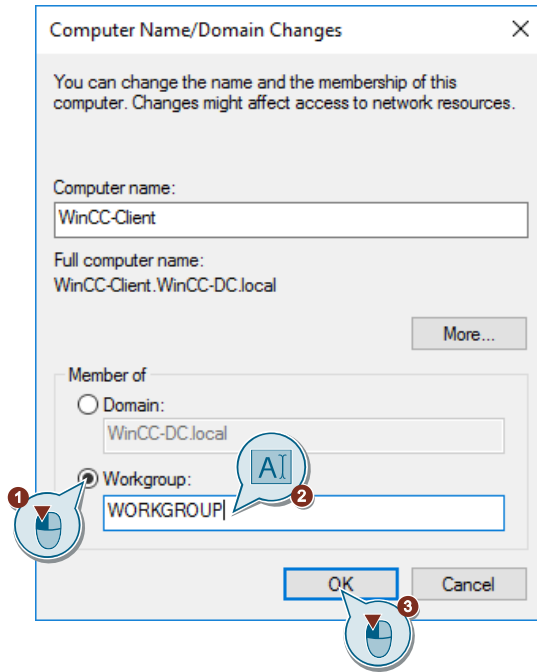
2. The "System Properties" opens. Click the "Change" button in the lower area.

Figure 2-29



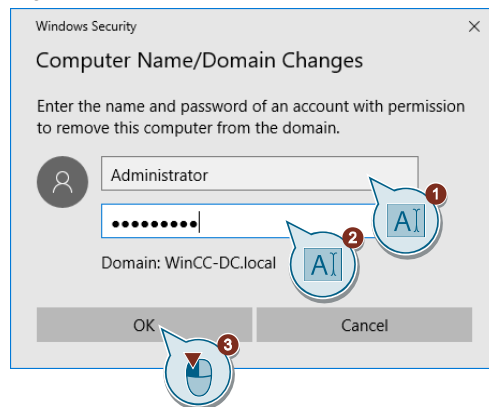
3. The window for changing computer name and domain affiliation settings opens. Check the "Workgroup" option in the "Member of" section. (1) Enter the default name "WORKGROUP" in the field below that. (2) Confirm your settings with the "OK" button. (3)

Figure 2-30



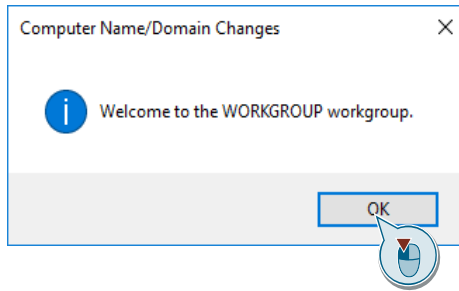
4. A security window will appear prompting you to enter the credentials of a user who has permission to join the domain. Enter the user name of the Admin set up on the domain server. (1) Enter the password of the Admin set up on the domain server. (2) Confirm your entries with the "OK" button. (3)

Figure 2-31



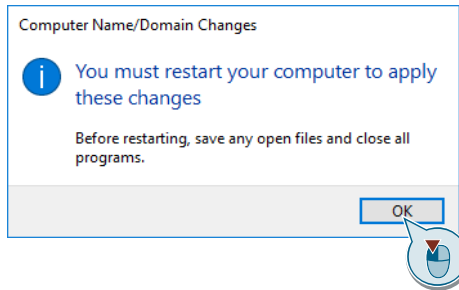
5. If the credentials are entered correctly, the client computer is removed from the domain. A window will appear in which you will be informed that you have joined the "WORKGROUP" working group. Confirm this with the "OK" button.

Figure 2-32



6. In another window, you will be informed that you must restart the computer before the changes you have made become active.

Figure 2-33

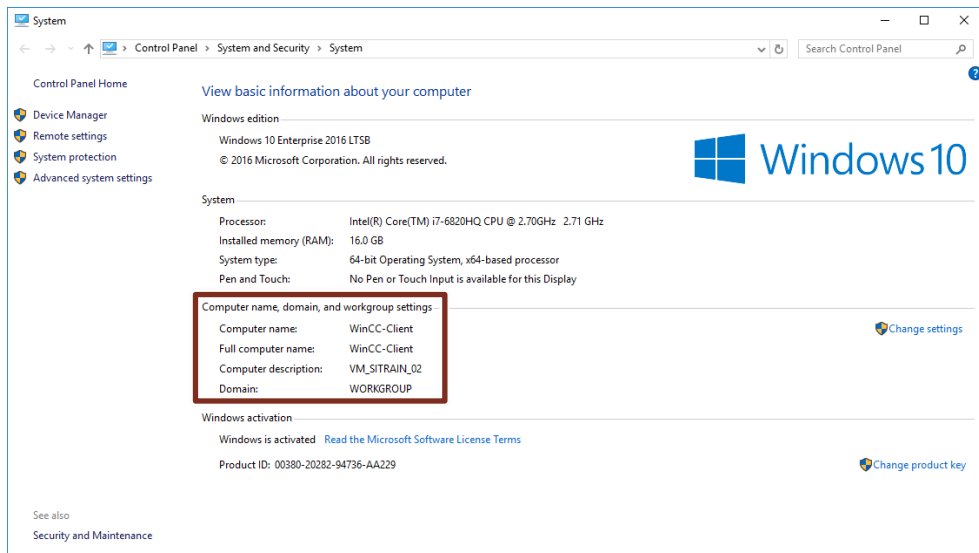


7. Restart the computer as soon as possible.

Result

You have successfully removed the computer from the domain. You can also find this in the information in your system. The computer is no longer subject to the policies and regulations of the domain. You can now start the installation of WinCC.

Figure 2-34



2.6 Installing WinCC on a domain computer

If your computer is already part of the domain, you should remove it for the installation. The procedure is shown in chapter [2.5](#). Install "Windows Message Queueing" and WinCC V7.5 / WinCC V15.1 Professional on the user PC. Restart the user computer when installation is completed. For further information on installing the different WinCC versions, please refer to the following links:

WinCC V7.5:

<https://support.industry.siemens.com/cs/ww/en/view/109762744>

WinCC V15.1:

<https://support.industry.siemens.com/cs/ww/en/view/109755202>

Note

Note however that domain group policies and restrictions in the domains may prevent installation.
To make sure that the installation and the function of the software on the computer are carried out without errors, remove the computer from the domain before the installation.

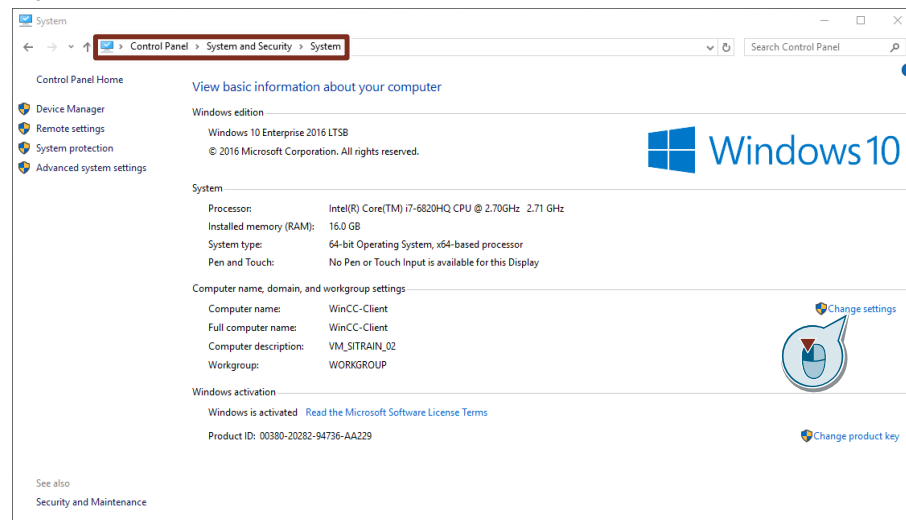
In addition, WinCC servers and domain servers must operate on separate systems.

2.7 Adding a computer to a domain

This section describes how to add a computer to a domain. If you want to use WinCC on the computer and have not yet performed the required installations, start with the chapter "2.4". Otherwise continue with the instructions here. The operating system used here is Windows 10 Enterprise LTSC (LTSB). When using other operating systems, the display of the menus may differ.

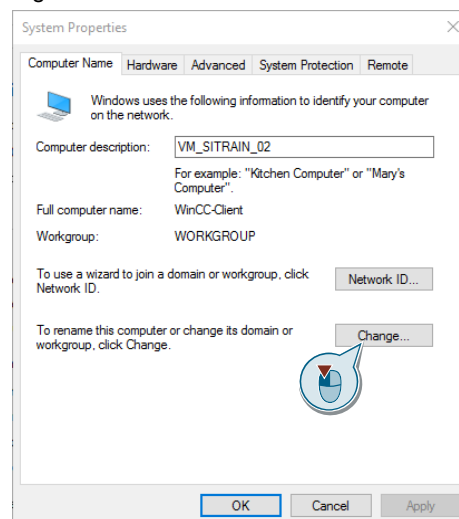
1. Open the system properties. You can find these in the path "Control Panel > System and Security > System". In the Computer name, Domain, and Workgroup settings area, click the Change settings button.

Figure 2-35



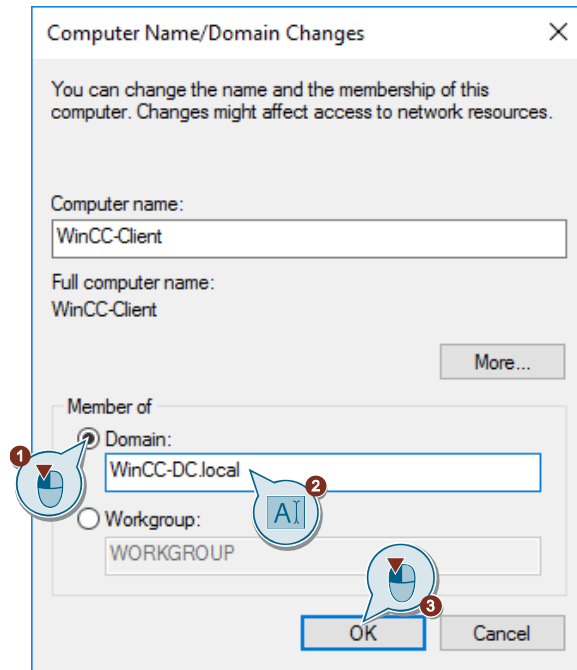
2. The "System Properties" opens. Click the "Change" button in the lower area.

Figure 2-36



3. The window for changing computer name and domain affiliation settings opens. Check the "Domain" option in the "Member of" section. (1) Enter the name of the domain in which you want to include the computer in the field below that. (2) Confirm your settings with the "OK" button. (3)

Figure 2-37

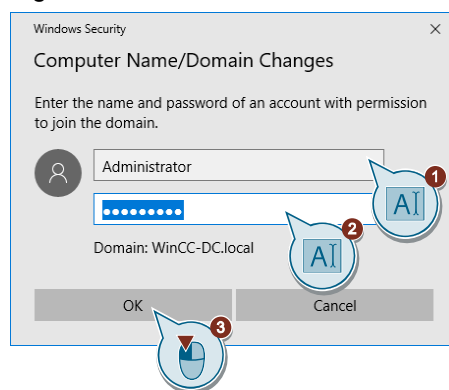


Note

The domain server must be switched on for the integration of a new computer.

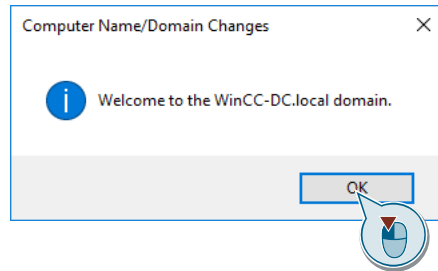
4. A security window will appear prompting you to enter the credentials of a user who has permission to join the domain. Enter the user name of the Admin set up on the domain server. (1) Enter the password of the Admin set up on the domain server. (2) Confirm your entries with the "OK" button. (3)

Figure 2-38



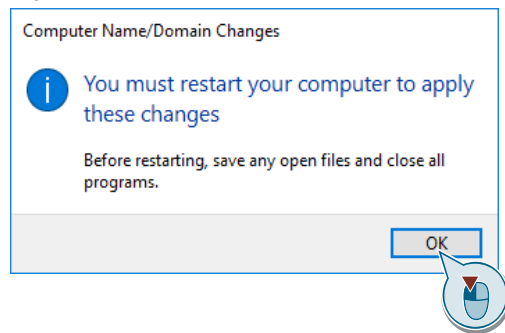
5. If the credentials are entered correctly, the client computer is integrated into the domain. A window will appear in which you will be informed that you have joined the domain. Confirm this with the "OK" button.

Figure 2-39



6. In another window, you will be informed that you must restart the computer before the changes you have made become active.

Figure 2-40

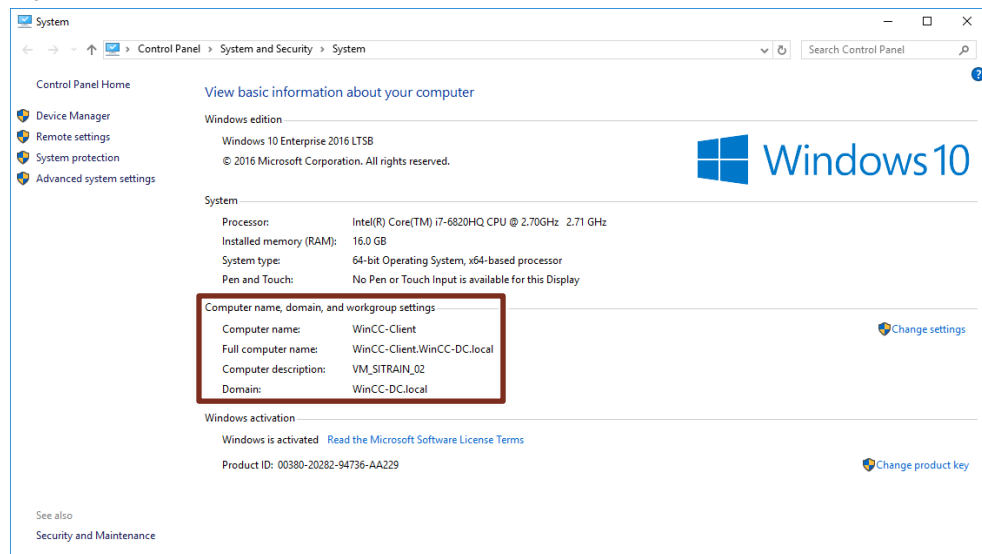


7. Restart the computer as soon as possible.

Result

You have successfully added the computer as a client to the domain. You can also find this in the information in your system. The computer is now subject to the policies and regulations of the domain.

Figure 2-41



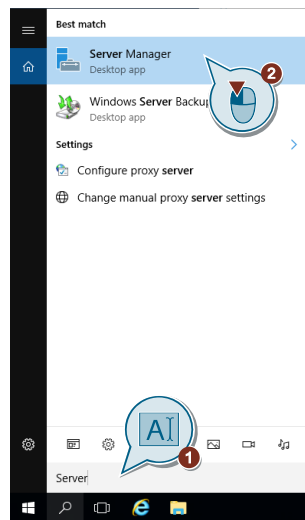
2.8 Create a domain group

This section describes how to create a domain group. You can then assign it to different domain users.

Note For larger architectures with many computers, it makes sense to divide groups and users into different organizational units.

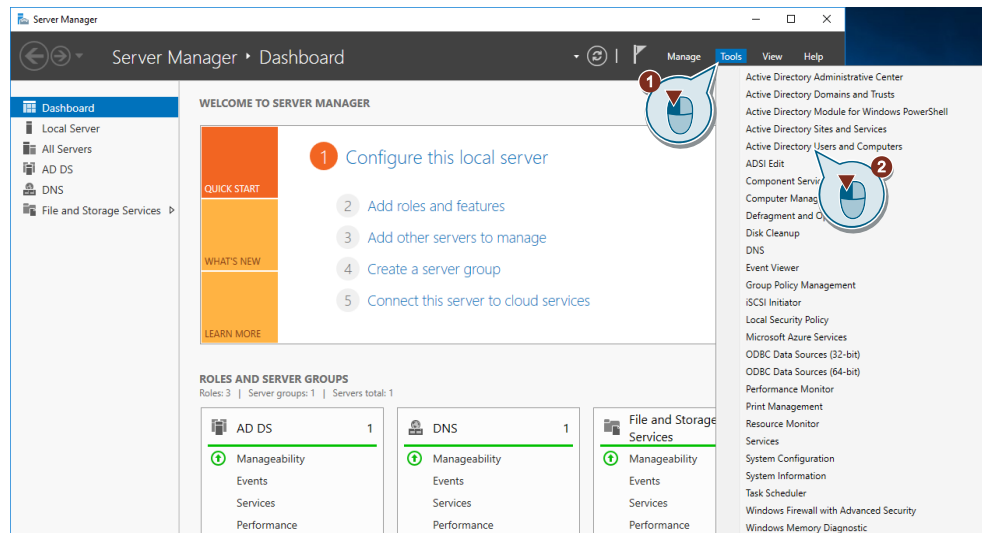
1. Open the Server Manager on the domain server. To do this, enter the term "Server" in the Windows search. (1) Then click on the "Server Manager" entry. (2)

Figure 2-42



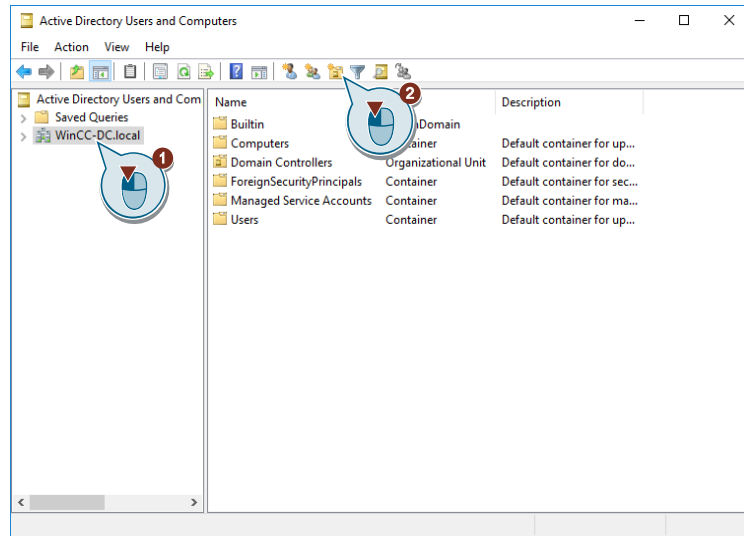
2. Click the "Tools" button in the Server Manager interface. (1) Click "Active Directory Users and Computers" in the context menu that opens. (2)

Figure 2-43



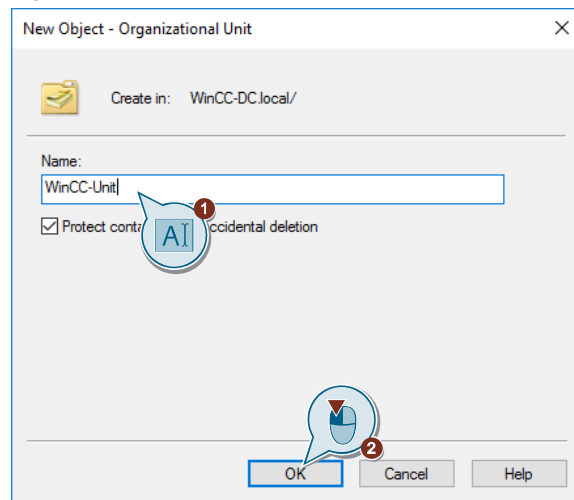
3. A tool opens to customize the users and computers within the domain. Click on the server "WinCC-DC.local". (1) Create a new organizational unit by clicking on the "folder symbol with star" in the upper function bar. (2)

Figure 2-44



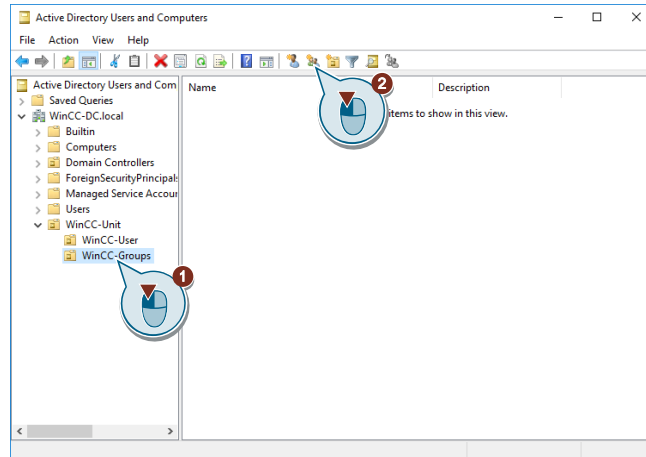
4. Enter a suitable name (1) in the window that appears for creating the organizational unit and confirm with a click on the "OK" button. (2)

Figure 2-45



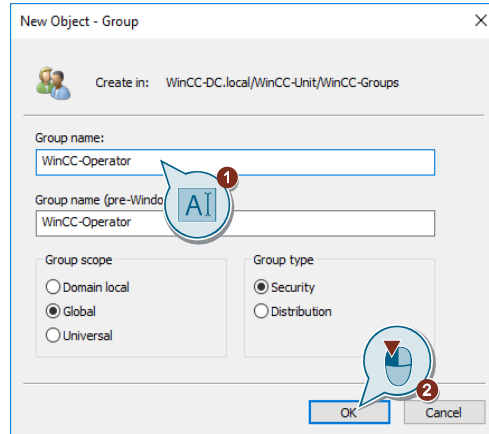
5. The new organizational unit is listed in the list of objects in the domain. For a better overview, it is recommended to separate users and groups into subordinate organizational units. To do this, you must select the "WinCC Unit" organizational unit and repeat steps 3 and 4. In this example, the sub-organizational units "WinCC Users" and "WinCC Groups" were created. Select the sub-organizational unit "WinCC-Groups" (1) and click on the group icon in the upper function bar. (2)

Figure 2-46



6. Assign a suitable group name (here "WinCC operator") in the window that appears. (1) Leave the other settings at their default values. Confirm the creation of the group with the "OK" button. (2)

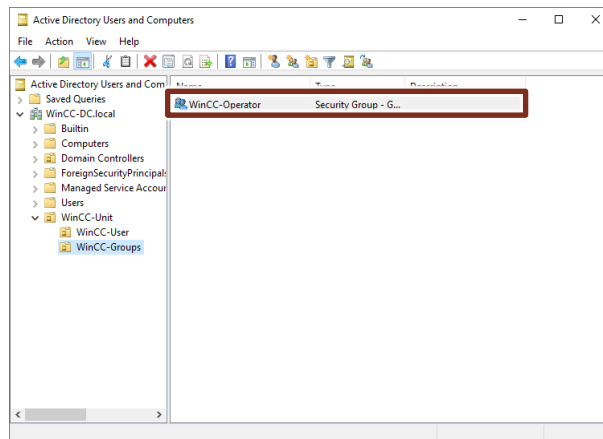
Figure 2-47



Result

You have successfully created a domain group. You can see them in the sub-organizational unit "WinCC Groups".

Figure 2-48

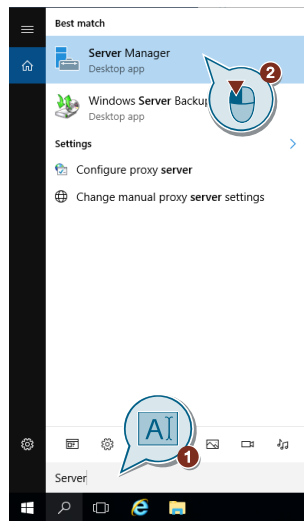


2.9 Creating Domain Users and Assigning them to a Domain Group

Domain users are accounts that are managed by the domain server within the domain via rights and group policies. Within a domain, a domain user can log on to any computer with his personal credentials. Create a domain user with the following instructions.

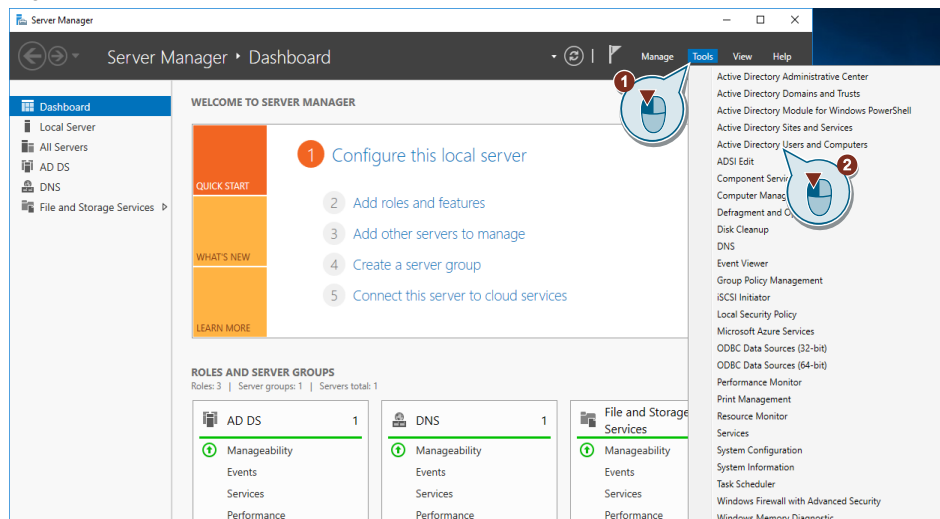
1. Open the Server Manager on the domain server. To do this, enter the term "Server" in the Windows search. (1) Then click on the "Server Manager" entry. (2)

Figure 2-49



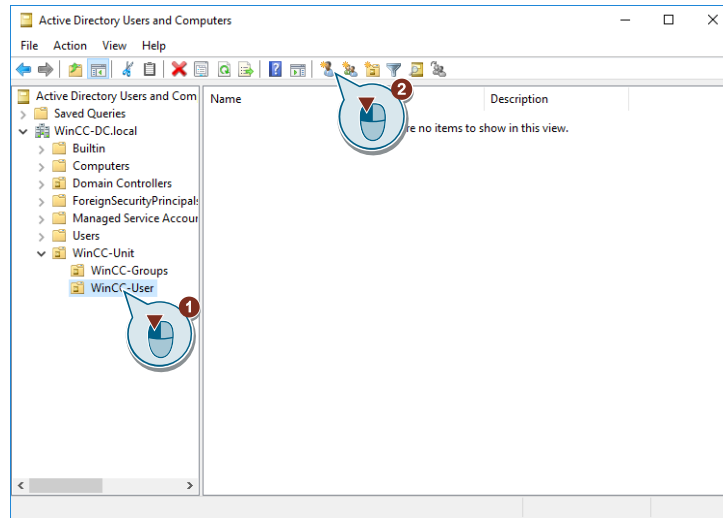
2. Click the Tools button in the Server Manager interface. (1) Click "Active Directory Users and Computers" in the context menu that opens. (2)

Figure 2-50



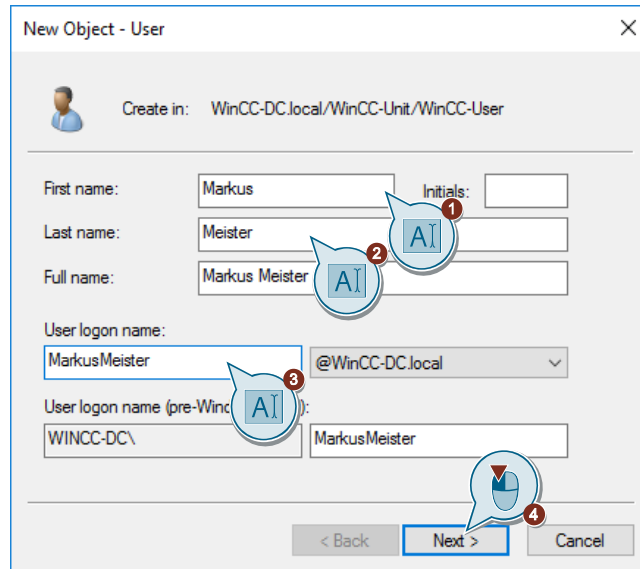
3. Browse to the sub-organizational unit "WinCC User", which you have created in the section 2.8, and select it with one click. (1) Click the icon for creating a new user in the upper toolbar. (2)

Figure 2-51



4. An assistant for creating a domain user opens. Enter the first name (1), last name (2) and logon name (3) that you want to assign to the user. Continue with the "Next" button. (4)

Figure 2-52

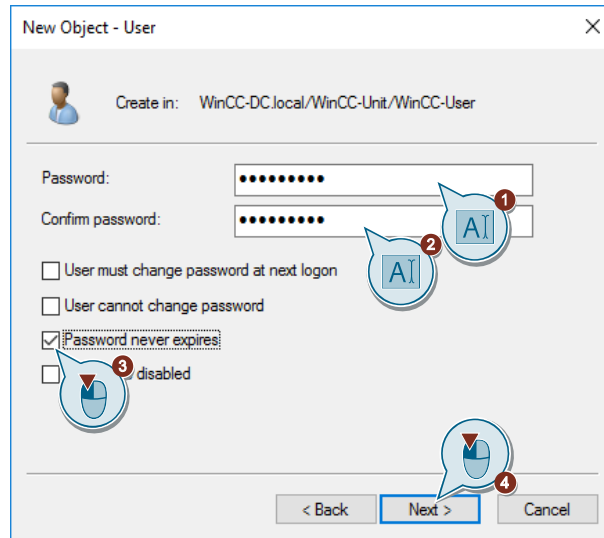


- In the following window, enter a password (1) and confirm it by entering it repeatedly. (2) Check the option "Password never expires". (3) Continue with the "Next" button. (4)

Note

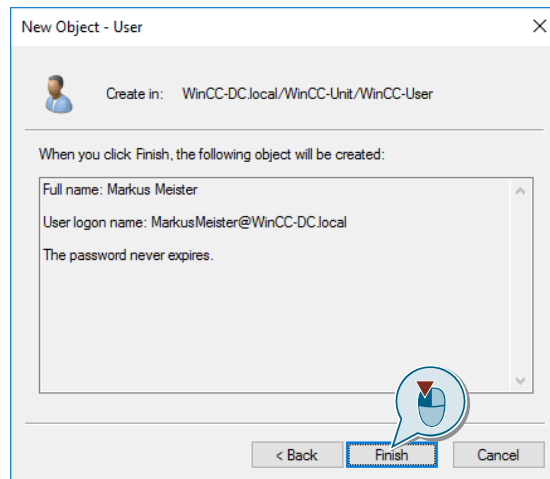
This is necessary if, for example, the WinCC server is to be operated permanently on a device with logged in users. Other domain users can update their passwords regularly and therefore do not need this option.

Figure 2-53



- Confirm the creation of the domain user with the "Finish" button.

Figure 2-54



Result

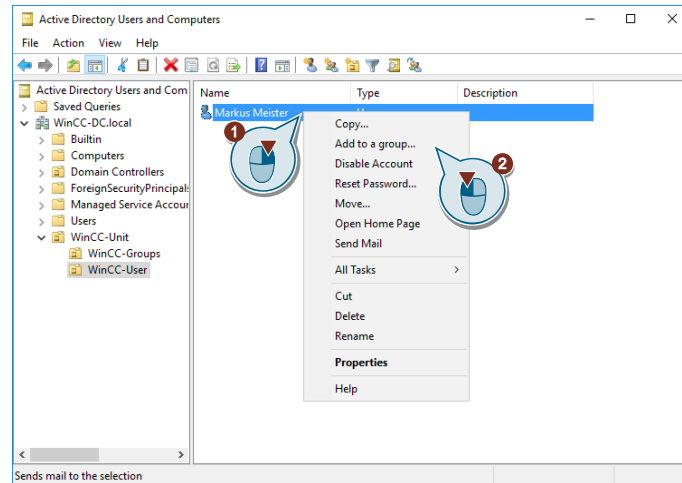
You have successfully created a new domain user. You can continue assigning the user to a domain group.

Assigning a domain user to a domain group

This section shows how to assign a domain user to a domain group.

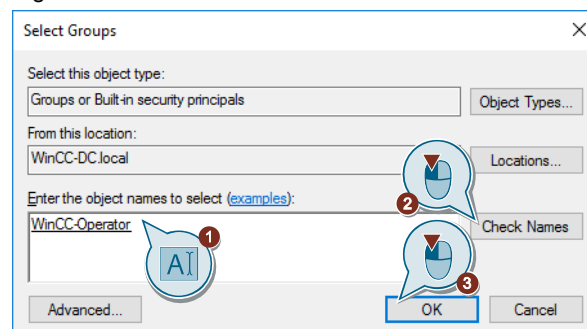
1. Right-click on a user (1) and select "Add to group..." from the context menu.

Figure 2-55



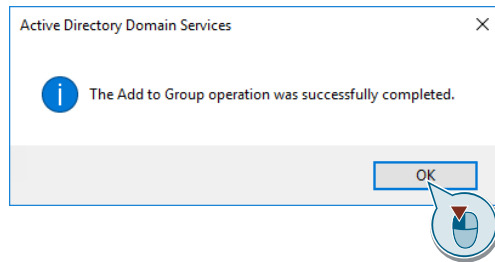
2. A window for assigning groups opens. In the input field, enter the name or part of the name of the group to which you want to assign the user. (1) Click the "Check Names" button. (2) If the group is recognized, the name of the group is underlined in the input field. If several groups are recognized, a selection window appears in which you must select the correct group. In this window you can also assign a user to several groups at the same time. Once you have added all groups in the input field, continue with the "OK" button.

Figure 2-56



3. If the assignment of a user to the groups was successful, a confirmation dialog is displayed. Confirm your acknowledgment with the "OK" button.

Figure 2-57



Result

You have successfully assigned a domain user to a domain group.

Note

In the properties of the users you can see which groups they are assigned to. You can also see in the properties of the group which users are assigned to it,

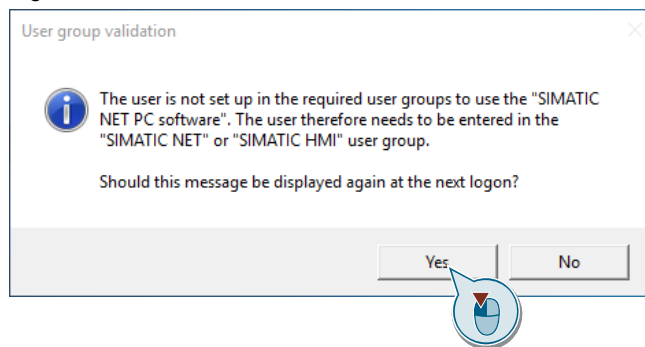
2.10 Adding a domain group to a local group

This section shows you how to include a domain group in a local group on the domain client. This gives all domain users who are members of the domain group the rights of the local group to the domain client.

This is necessary because only members of the local SIMATIC HMI group can access WinCC functions.

If you are not a member of the "SIMATIC HMI" group, you will be informed upon registration that you need this membership in order to be able to use "SIMATIC NET PC Software".

Figure 2-58



Note

Additional information on user groups and access rights is available under the following link:

WinCC V7.5

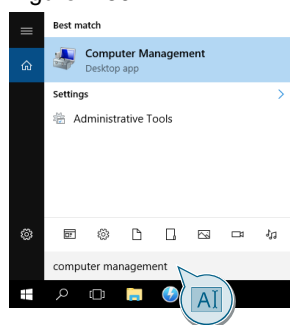
<https://support.industry.siemens.com/cs/ww/en/view/109760740/115064707339>

WinCC V15.1

<https://support.industry.siemens.com/cs/ww/en/view/109755202/116344382091>

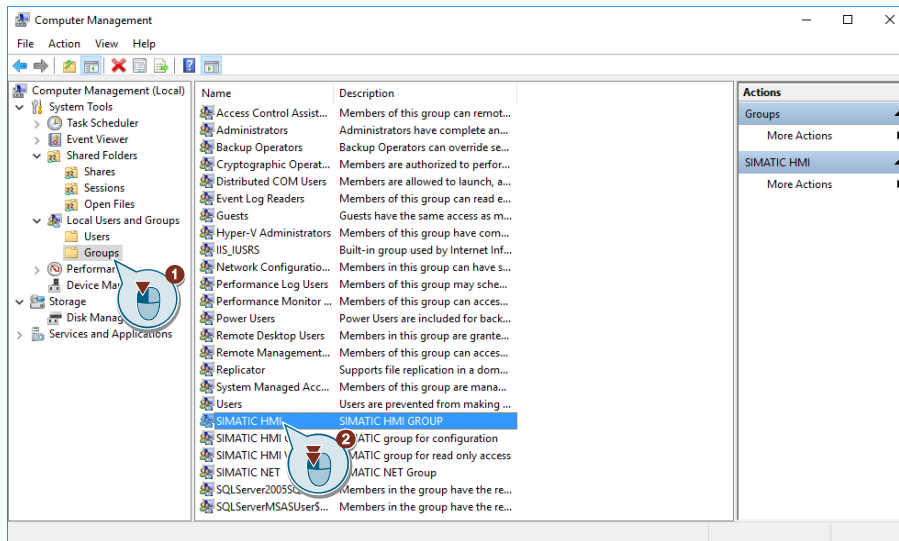
1. Log on to the domain client as a local administrator.
2. Open Computer Management by typing Computer Management in the Windows search bar and pressing Enter.

Figure 2-59



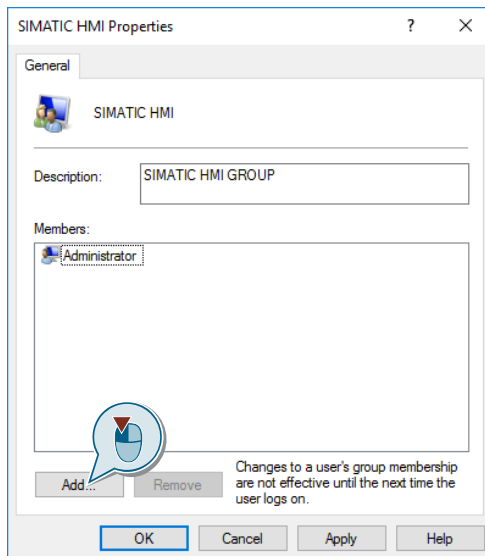
3. The computer management opens. Open the entry "Local Users and Groups" in the navigator of the computer management. Select the subordinate entry "Groups". (1) Double-click on the group "SIMATIC HMI". (2)

Figure 2-60



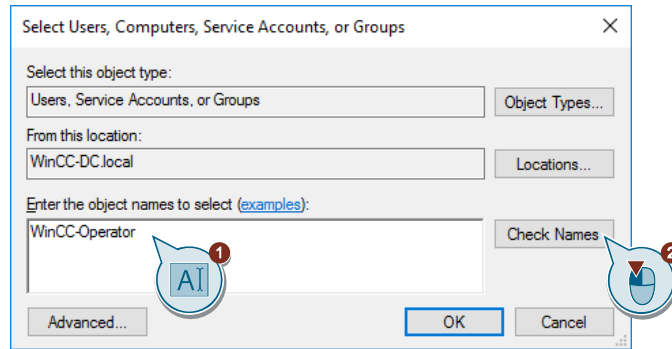
4. The current participants of the "SIMATIC HMI" group are listed here. Click the "Add" button.

Figure 2-61



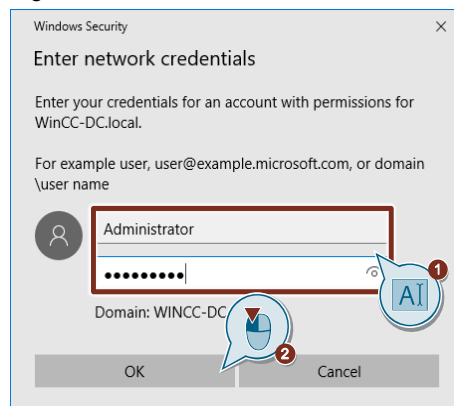
5. A window for adding group members opens. In the input field, enter the name of the group that you want to add to the "SIMATIC HMI" group. In this case, it is the domain group "WinCC Operator" that you created in the section [2.9](#).

Figure 2-62



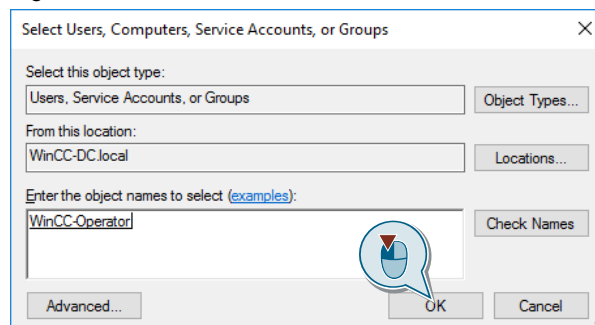
6. To insert domain groups into local groups, you need administrator rights on the local computer and access to the domain. This is the only way you can view the internal domain structure. To do this, you must enter the login data of a domain user in the window that appears. Enter the domain administrator's credentials in the appropriate fields. (1) Confirm with the "OK" button. (2)

Figure 2-63



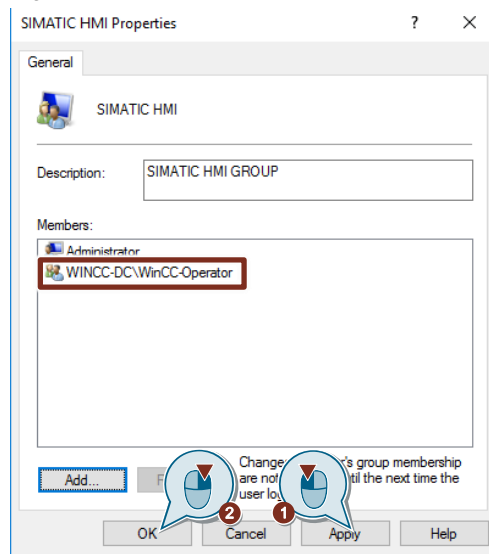
7. After successful login, the login window disappears and the group, if recognized, is marked underlined in the input field. Press the "OK" button to add the group to the "SIMATIC HMI" group.

Figure 2-64



8. The domain group "WinCC Operator" now appears in the list of active group members of the "SIMATIC HMI" group. Click on "Apply" to confirm the changes. (1) Click the "OK" button to close the window. (2)

Figure 2-65



Result

You have successfully added the domain group "WinCC Operator" to the local group "SIMATIC HMI". The domain users assigned to this group can log on to the domain client (local computer) and operate WinCC as usual.

Note

When using WinCC in a domain, it is recommended to use the "SIMATIC Logon" software. This software makes it possible to use the user management of the local computer or domain controller for WinCC. In this way you simplify the creation and administration of users of your WinCC application.

More detailed information about "SIMATIC Logon" can be found under the following link: <https://support.industry.siemens.com/cs/ww/en/view/109749167>

3 Appendix

3.1 Service and support

Industry Online Support

Do you have any questions or need assistance?

Siemens Industry Online Support offers round the clock access to our entire service and support know-how and portfolio.

The Industry Online Support is the central address for information about our products, solutions and services.

Product information, manuals, downloads, FAQs, application examples and videos – all information is accessible with just a few mouse clicks:

<https://support.industry.siemens.com>

Technical Support

The Technical Support of Siemens Industry provides you fast and competent support regarding all technical queries with numerous tailor-made offers – ranging from basic support to individual support contracts. Please send queries to Technical Support via Web form:

www.siemens.com/industry/supportrequest

SITRAIN – Training for Industry

We support you with our globally available training courses for industry with practical experience, innovative learning methods and a concept that's tailored to the customer's specific needs.

For more information on our offered trainings and courses, as well as their locations and dates, refer to our web page:

www.siemens.com/sitrain

Note

You will learn about the products used in this application example in the courses:

- SITRAIN course: SIMATIC WinCC Professional, SCADA in the TIA Portal (Article ID: [109758618](#))
- SITRAIN entry course: WinCC V7 (Entry-ID: [109758633](#))
- SITRAIN advanced course: WinCC V7 and WinCC Options (Entry ID: [109758660](#))

Service offer

Our range of services includes the following:

- Plant data services
- Spare parts services
- Repair services
- On-site and maintenance services
- Retrofitting and modernization services
- Service programs and contracts

You can find detailed information on our range of services in the service catalog web page:

<https://support.industry.siemens.com/cs/sc>

Industry Online Support app

You will receive optimum support wherever you are with the "Siemens Industry Online Support" app. The app is available for Apple iOS, Android and Windows Phone:

<https://support.industry.siemens.com/cs/ww/en/sc/2067>

3.2 Links and Literature

Table 3-1

No.	Topic
\1\	Siemens Industry Online Support https://support.industry.siemens.com
\2\	Link to the entry page of the application example https://support.industry.siemens.com/cs/ww/en/view/78346833
\3\	

3.3 Change documentation

Table 3-2

Version	Date	Change
V1.0	05/2019	First version