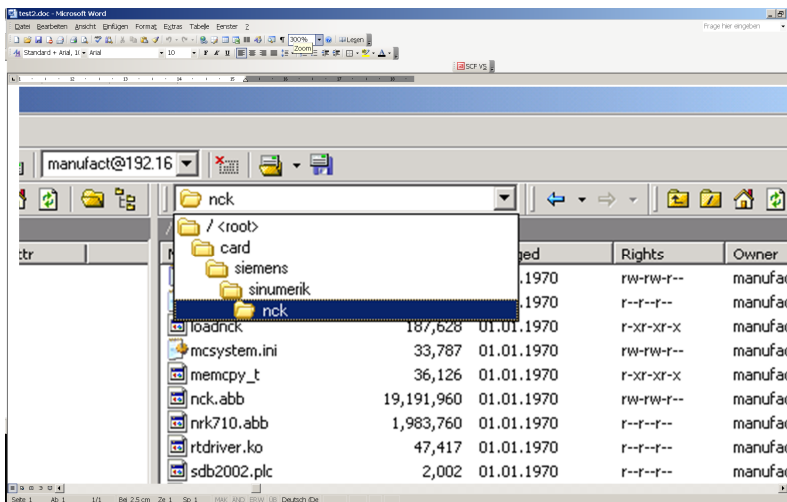


Writing to the hard disk of the PCU 50 from a part program

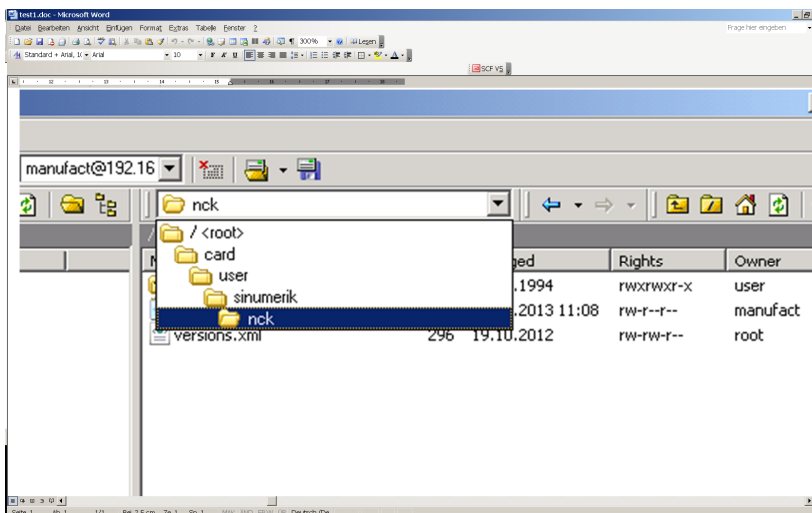
Procedure for "writing" from a part program onto an external drive.

As an example, the part program directory of the PCU50 has been selected.
The test was conducted with the 840D sl Version 2.7 SP1 HF1. Operation is performed via the SINUMERIK Operate / HMI-Advanced user interface.

The target path is configured in file extdev.ini. A template for the file is stored on the CF card under:
card/siemens/sinumerik/nck



This must be copied into the USER directory
card/user/sinumerik/nck



SIEMENS

Writing to the hard disk of the PCU 50 from a part program

Excerpt from extdev.ini;

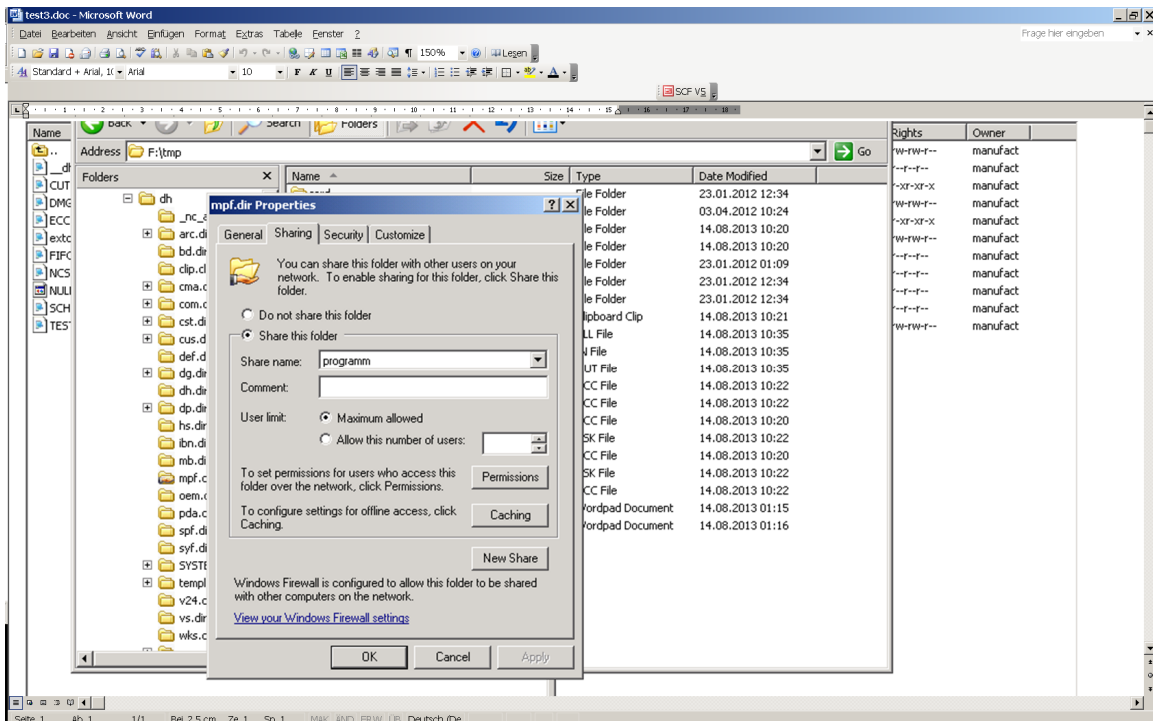
```
;Windows share  
;=====  
/dev/ext/1 = "//auduser%SUNRISE@192.168.214.241/programm, /test11.mpf, A"  
;/dev/ext/[1-9] = "[/[DOMAIN/]USERNAME%PASSWORD@SERVER/SHARE,  
/DIRECTORY_NAME/ [, [O|A]]"
```

The line with /dev/ext/1 has been adapted here and is activated by removing the "semicolon."

The target directory on the PCU50 is F:/DH/MPF.DIR

This directory has to be "released" under Windows.

The share name in this case is: program



The target file in this case is Test11.MPF

This file must already exist before the first write operation.

Writing to the hard disk of the PCU 50 from a part program

Test program:

```
N10 def int error
N20 def int errorout
N30 def string[32] output
;N40 output="LOCAL_DRIVE/MY_DIR/write.txt" ;to local directory on the CF card
N40 output="/dev/ext/1" ;to the part program directory of the PCU50
N50 extopen (error,output,"SYN","SHARED","APP")
N60 g4 f.1
N70 WRITE (errorout,output," it works'H0A'") ;an LF is generated by H0A
N72 STOPRE
N74 R1=error R2=errorout ;to control the error messages
N90 M30
```

NOTICE	The attributes for "append" or "overwrite" in extdev.ini and in the EXTOPEN command line must match: <ul style="list-style-type: none">• A(APP)=append• O(OVR)=overwrite
---------------	--

You will find further information in the "Advanced" programming guide on the DOConCD.