

SIEMENS



Application Description • 11/2013

Excel Template for the Labeling Strips of the S7-1500 and ET 200MP

SIMATIC S7-1500, ET 200MP

Warranty and Liability

Note

The Application Examples are not binding and do not claim to be complete regarding the circuits shown, equipping and any eventuality. The Application Examples do not represent customer-specific solutions. They are only intended to provide support for typical applications. You are responsible for ensuring that the described products are used correctly. These application examples do not relieve you of the responsibility to use safe practices in application, installation, operation and maintenance. When using these Application Examples, you recognize that we cannot be made liable for any damage/claims beyond the liability clause described. We reserve the right to make changes to these Application Examples at any time without prior notice. If there are any deviations between the recommendations provided in these application examples and other Siemens publications – e.g. Catalogs – the contents of the other documents have priority.

We do not accept any liability for the information contained in this document.

Any claims against us – based on whatever legal reason – resulting from the use of the examples, information, programs, engineering and performance data etc., described in this Application Example shall be excluded. Such an exclusion shall not apply in the case of mandatory liability, e.g. under the German Product Liability Act (“Produkthaftungsgesetz”), in case of intent, gross negligence, or injury of life, body or health, guarantee for the quality of a product, fraudulent concealment of a deficiency or breach of a condition which goes to the root of the contract (“wesentliche Vertragspflichten”). The damages for a breach of a substantial contractual obligation are, however, limited to the foreseeable damage, typical for the type of contract, except in the event of intent or gross negligence or injury to life, body or health. The above provisions do not imply a change of the burden of proof to your detriment.

Any form of duplication or distribution of these Application Examples or excerpts hereof is prohibited without the expressed consent of Siemens Industry Sector.

Caution

The functions and solutions described in this article confine themselves predominantly to the realization of the automation task. Furthermore, please take into account that corresponding protective measures have to be taken in the context of Industrial Security when connecting your equipment to other parts of the plant, the enterprise network or the internet. Further information can be found in Entry ID 50203404.

<http://support.automation.siemens.com/WW/view/en/50203404>

Contents

Warranty and Liability	2
1 Task.....	4
2 Solution.....	5
2.1 Overview	5
2.2 Applications and Advantages	5
2.3 Components Used	5
2.4 Operating Requirements.....	5
3 Preparation of the Excel Template.....	6
3.1 Unpack the Excel Template	6
4 Using the Excel Template	7
4.1 Start the Excel Template.....	7
4.2 Select the Print Format	7
4.3 Configure the Settings	9
4.4 Edit the Cells	11
4.5 Printing the Labeling Strips	12
5 Related Literature.....	15
6 History	15

1 Task

Overview of the Automation Tasks

In order to integrate the S7-1500 and ET 200MP modules clearly in a plant, you can have the labeling strips of the S7-1500 and ET 200MP individually printed.

Figure 1-1 S7-1500



2 Solution

2.1 Overview

We have developed the "Excel Template for the Labeling Strips of the S7-1500 and ET 200MP" for easy printing of the S7-1500 and ET 200MP labeling strips both vertically and horizontally.

2.2 Applications and Advantages

Application of the "Excel Template for Labeling Strips of the S7-1500 and ET 200MP" gives you the following advantages:

- Vertical and horizontal printing on the labeling strips of the S7-1500 and ET 200MP
- Clear setting dialog
- Time saving when labeling S7-1500 and ET 200MP modules

2.3 Components Used

The Excel Template has been created with the components below.

Components

- Microsoft Excel 2010
- Labeling sheets SIMATIC S7-1500 (6ES7 592-3AX00-0AA0)

2.4 Operating Requirements

Note

Use only a laser printer to print the labeling strips of the SIMATIC S7-1500 and ET 200MP and if possible always use single sheet feed.

3 Preparation of the Excel Template

3.1 Unpack the Excel Template

Unpack the "Excel_Template_S71500_ET200MP.zip" file in a separate directory. This directory then contains the "Excel Template for Labeling Strips of the S7-1500 and ET 200MP".

4 Using the Excel Template

4.1 Start the Excel Template

After downloading and unpacking the ZIP file you open the "Excel_Template_S71500_ET200MP.xls" file with a double-click.

Note If upon opening the Excel Template you get the security warning indicating that macros have been disabled. Confirm this by clicking the "Enable Content" button. You must enable the macro to ensure full use of all the functions of the "Excel Template for Labeling Strips of the S7"

Fig. 4-1



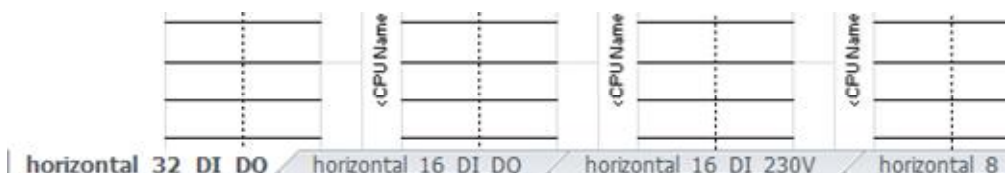
4.2 Select the Print Format

When the Excel Template opens, you have 12 different templates available, 6 each for vertical and horizontal printing.

The different templates are in the menu list of Microsoft Excel below.

Note Before starting you should make sure how your S7-1500 or ET 200MP is mounted and then select the corresponding format template.

Fig. 4-2



The following format templates are available to you in separate tables:

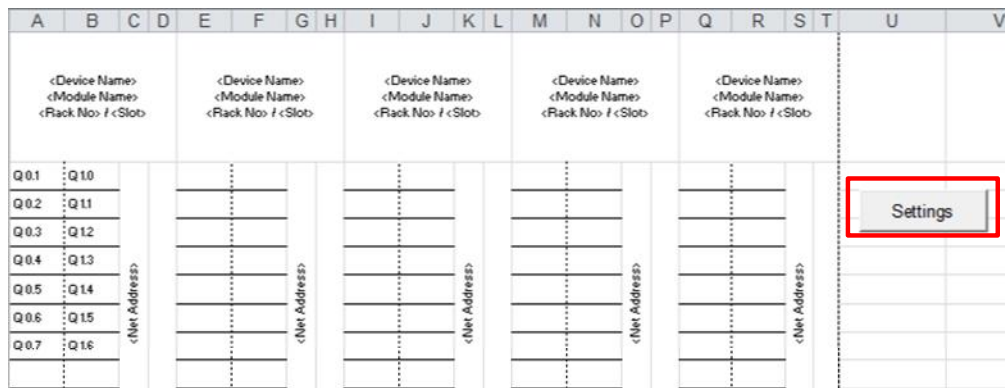
- Horizontal 32 DI / DQ
- Horizontal 16 DI / DQ
- Horizontal 16 DI 230V

- Horizontal 8 DQ 230V
- Horizontal 8 AI / AQ
- Horizontal 4 AQ
- Vertical 32 DI / DQ
- Vertical 16 DI / DQ
- Vertical 16 DI 230V
- Vertical 8 DQ 230V
- Vertical 8 AI / AQ
- Vertical 4 AQ

4.3 Configure the Settings

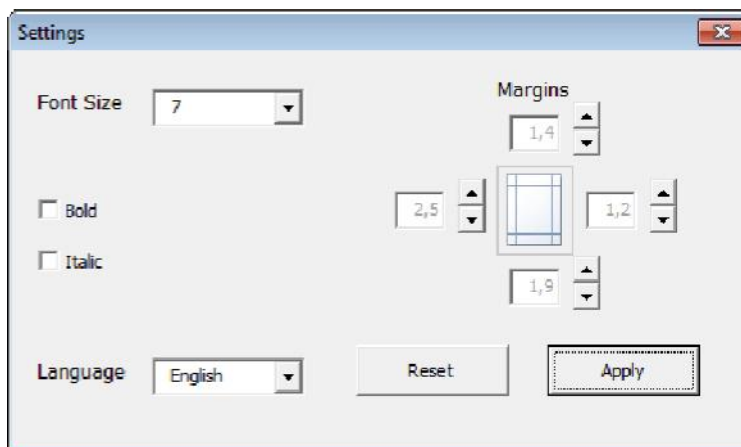
The "Settings" dialog mask has been created for changing the main settings of the "Excel Template for the Labeling Strips of the S7-1500 and ET 200MP". Click the "Settings" button to open the "Settings" dialog.

Fig. 4-3



The "Settings" dialog mask opens. Here you can change the margins and font size of the current Excel table.

Fig. 4-4



Changing the language

You can change the language of the Excel Template by selecting "Deutsch" or "English" in the "Language" drop-down list box.

Note

Language changes become effective immediately when selected. Changes in font sizes etc. become effective only after clicking the "Apply" button.

Font size

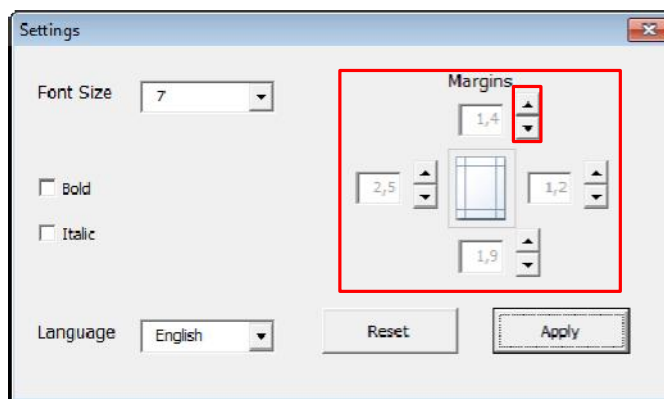
To change the font size for the current table you select the required size in the "Font Size" drop-down list box. You can select font sizes from 6 to 10. Larger or smaller font sizes are impractical for the labeling strips of the S7-1500 and ET 200MP.

You can also choose "bold" and "italics" for the texts. For this you select the "Bold" and "Italic" options as required. The texts of the current page are then changed accordingly when you click the "Apply" button.

Margins

You change the margins by clicking the arrow buttons which changes the values in steps of 0.1. The margin unit is centimeters.

Fig. 4-5



Note

Only change the values for the margins if there are shifts in the printer when printing on the labeling strips of the S7-1500 and ET 200MP.

Reset

Clicking the "Reset" button restores all the default values of the "Settings" dialog mask and you apply them according by clicking the "Apply" button. These default values are:

- Font size 7
- Italic disabled
- Bold disabled
- Top margin: 1.4 cm
- Left margin: 2.5 cm
- Bottom margin: 1.9 cm
- Right margin: 1.2 cm

Apply

Clicking the "Apply" button applies the changes made in the dialog mask to the texts of the current page and closes the dialog mask.

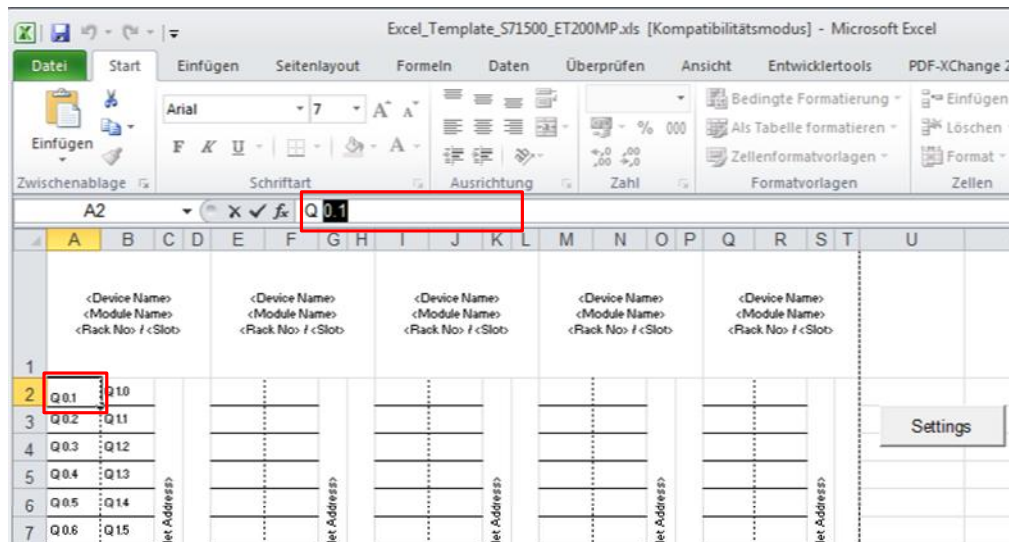
Note

To avoid making errors when changing the font size and margins in the Excel Template, make the changes only using the "Settings" button which is designed exactly for this.

4.4 Edit the Cells

Now you can start editing the texts in the prepared Excel cells. For this you click the cell to be edited and then click in the address bar to edit the texts.

Fig. 4-6



Note

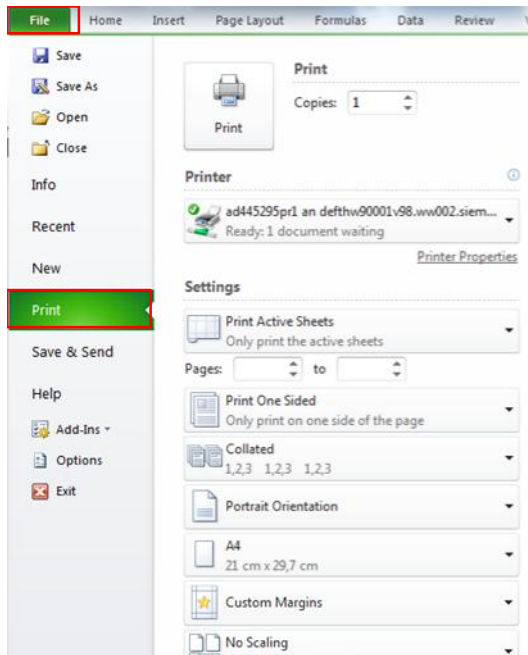
If the texts do not fit into the cells, you can change the font size in the "Settings" dialog mask. For this you click the "Settings" button and make the changes as required.

4.5 Printing the Labeling Strips

When you have finished editing the texts and have made the appropriate settings, you can continue with the next step of "Printing on the Labeling Strips of the S7-1500 and ET 200MP".

For this you click "Start" in the toolbar and then "Print".

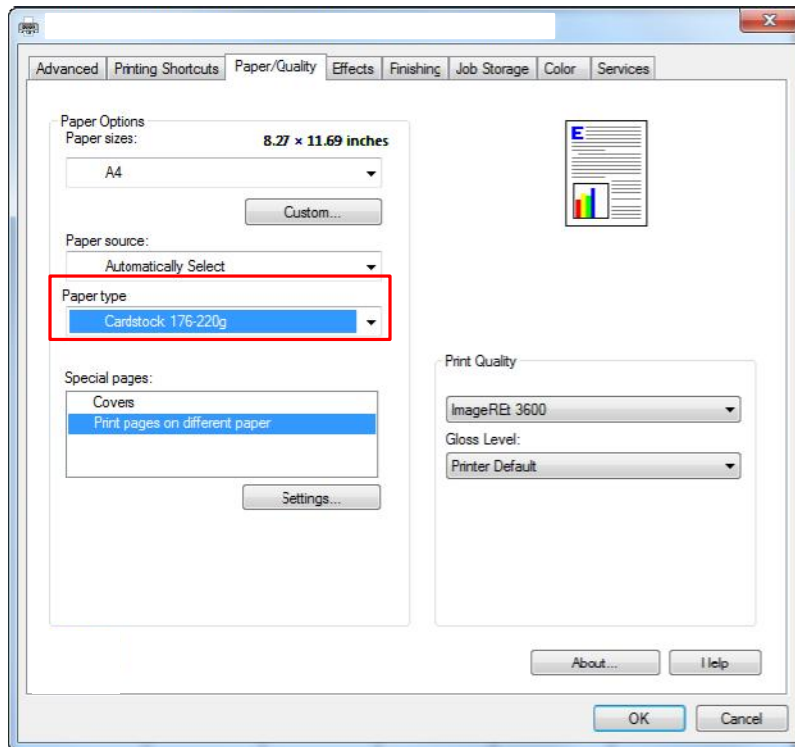
Fig. 4-7



Under the "Printer" item you select your printer.

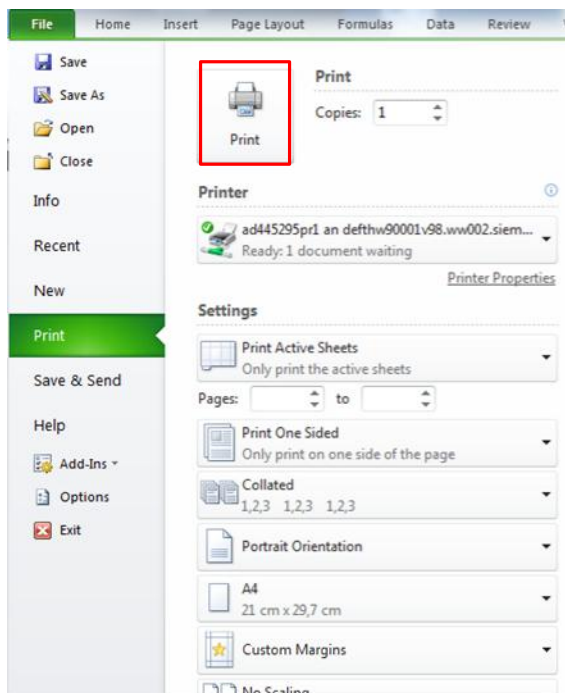
Open the printer properties by clicking the "Printer Properties" text and then you set "Cardstock 96-110g" as the paper type.

Fig. 4-8



Confirm the settings by clicking on the "OK" button.
Click the "Print" button to send off the print job.

Fig. 4-9



Note

There might be slight shifts when printing the labeling strips depending on the intake speed of the printer concerned. You can compensate these shifts by using single sheet feed or changing the margins.

5 Related Literature

	Subject area	Title
\1\	Siemens Industry Online Support	http://support.automation.siemens.com
\2\	Download page of the entry	http://support.automation.siemens.com/WW/view/en/83681795
\3\	SIMATIC ET 200MP	http://support.automation.siemens.com/WW/view/en/5725172
\4\	SIMATIC S7-1500	http://support.automation.siemens.com/WW/view/en/5692674

6 History

Table 6-1

Version	Date	Modifications
V1.0	11/2013	First version