



Weighing technology

FAQs

SIWAREX WP321

How to control or limit the simultaneously use of system function data record read and / or write?

V1.2 August 2020

How to control or limit the simultaneously use of system function data record read and / or write?

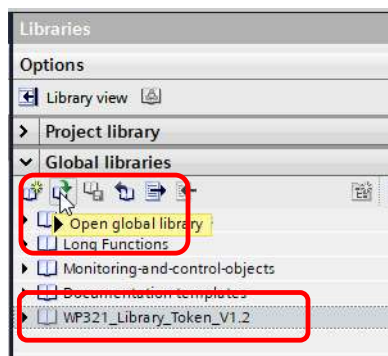
The library is created for 1200 and 1500 CPU's. The function block "WP321_Token" is an optional extension of the "WP321_Multiplex" getting started.

The block is used to control or limit the simultaneously use of system function data record read and / or write.

Information about the limits for simultaneously use of data records read and write for the different CPU's and with specific firmware versions can be found in this link.

<https://support.industry.siemens.com/cs/ww/en/view/15364459>

After unpacking the library, open it and the block WP321_Library_Token_V1.2 is listed in the Global Libraries:

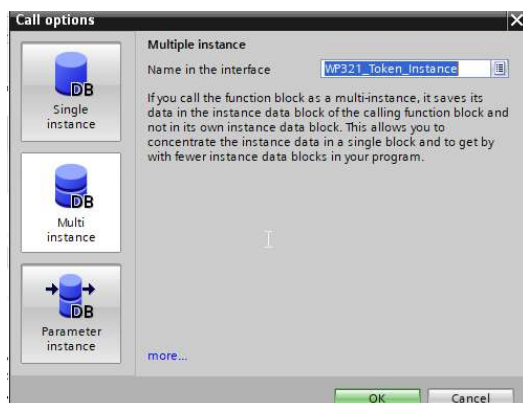
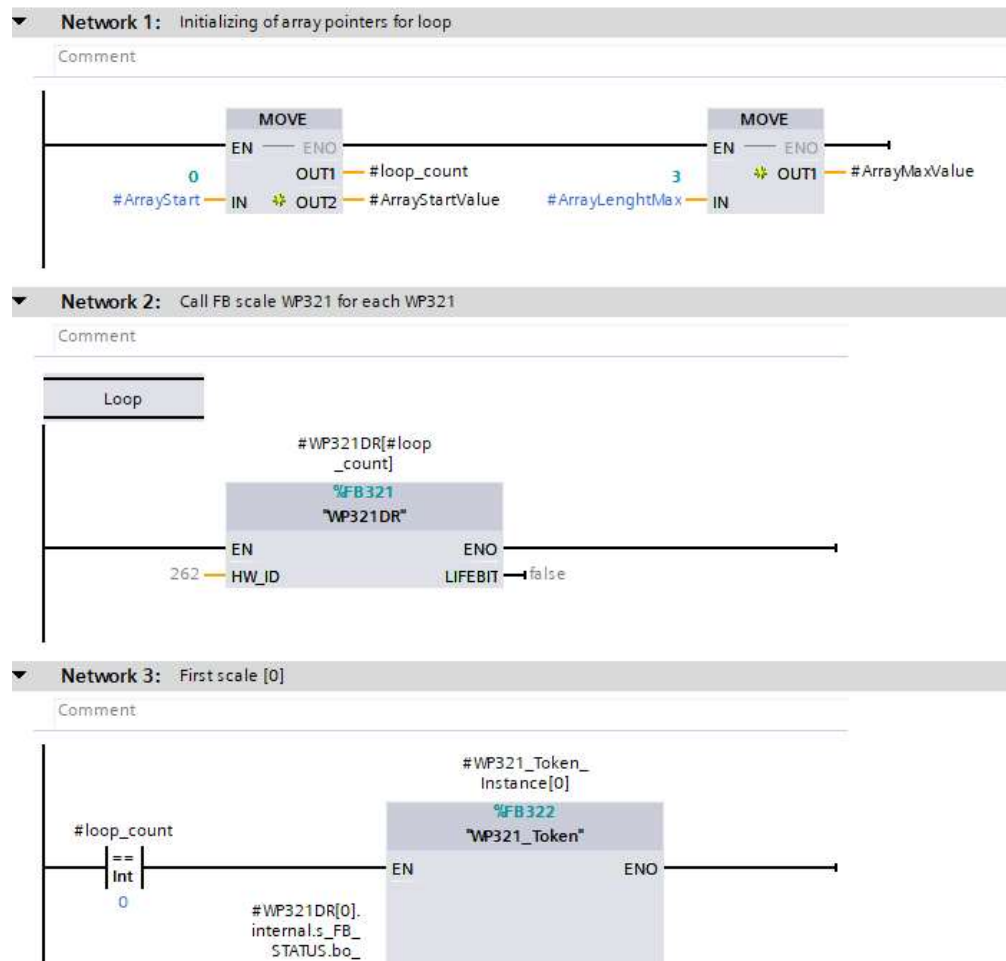


The block is developed for several scales and need to be called inside the FB "WP321_Multi_Call".

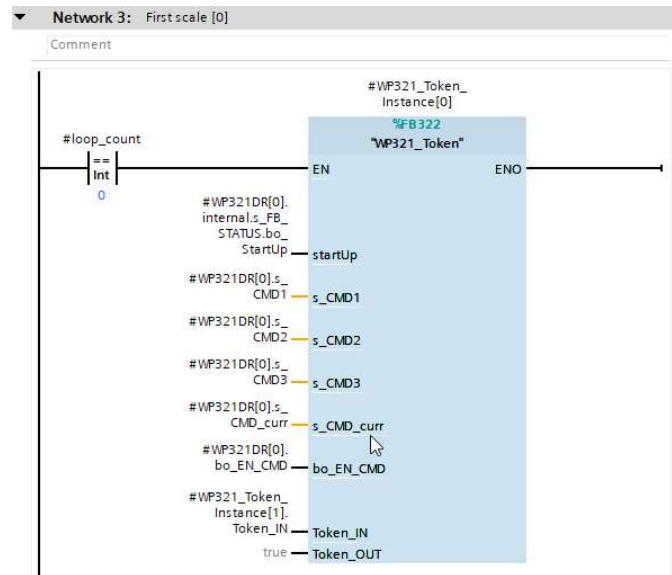
Insert an array of "WP321_token_instance" in the static I/O area

WP321_mul_call			
	Name	Data type	Offset
1	Input		
2	SynchronizeAllDataFr...	Bool	0.0
3	Output		
4	ArrayStartValue	Int	2.0
5	ArrayMaxValue	Int	4.0
6	InOut		
7	<Add new>		
8	Static		
9	WP321DR	Array[#ArrayStart..#ArrayLenghtMa...	
10	FBStartUpTemp	Array[#ArrayStart..#ArrayLenghtMa...	6.0
11	WP321_Token_Instance	Array[0..3] of *WP321_Token*	
12	Temp		

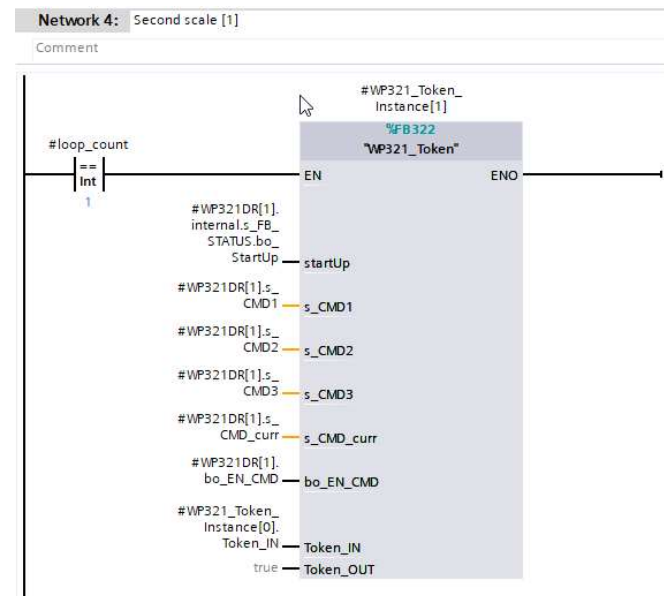
For each scale insert a network in the way described in the screenshot below and create the instance DB's for all token call's shown as a multi instance DB.



Call of Siwarex WP321 module no. 1



Call of Siwarex WP321 module no. 2



The In/out PIN Token_in and Token_out is the hand over from and to the next WP351_Token block. The pin Token_out is used on Token_in on the next WP351_Token block and the Pin Token_out from the last WP351_Token must be used on the pin Token_in on the first WP351_Token block.

In that way a token hand over chain is created.

It is possible to create more chains if needed.

Contact

If you have any issues or suggestions regarding the related products or documents, please feel free to contact:

Technical support for SIWAREX:

Siemens AG

Process Industries and Drives
Process Automation
Process Instrumentation
Oestliche Rheinbrueckenstr. 50
76187 Karlsruhe, Germany

Tel: +49 721 667 1200 (8am – 5pm German time)

E-Mail: hotline.siwarex@siemens.com

Website: www.siemens.com/weighing

Support-Request: <http://www.siemens.de/automation/support-request>

Copyright Statement

All rights reserved by Siemens AG

This document is subject to change without notice. Under no circumstances shall the content of this document be construed as an express or implied promise, guarantee (for any method, product or equipment) or implication by or from Siemens AG. Partial or full replication or translation of this document without written permission from Siemens AG is illegal.