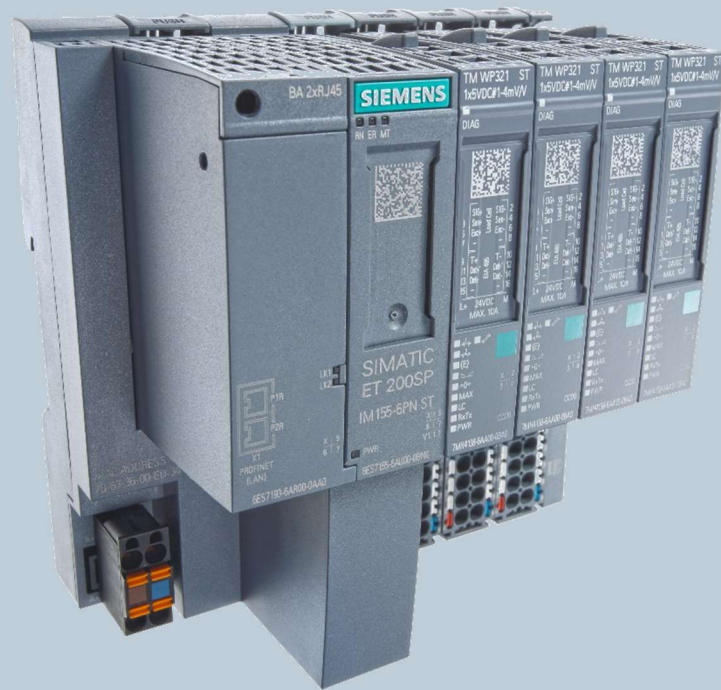


**SIEMENS**



Weighing technology

# FAQs

## SIWAREX WP321

How do I program several SIWAREX WP321 in one project?

V1.2 August 2020

[Siemens.com/weighing](https://www.siemens.com/weighing)

## **How do I program several SIWAREX WP321 in one project?**

The WP321 configuration package include several ready for use example projects for one WP321 used with S7-1500 and S7-300 CPU. The projects are available for different TIA Portal versions and for Simatic classic.

This TIA Portal ready for use projects have been developed in order to connect several scales to a 1500-CPU or 1200-CPU which is connected to a panel, it has been developed for use with TIA Portal V15.1 and newer.

For tag multiplexing a comfort panel is used (KTP basic panel do not support the functions that is used)

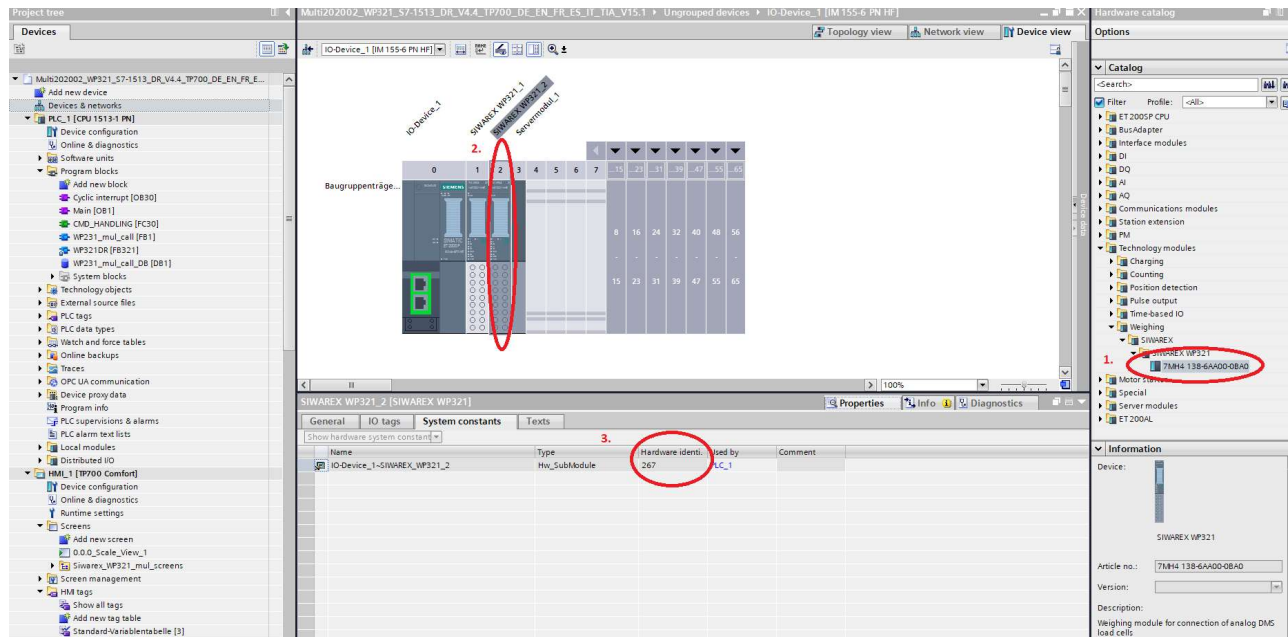
The firmware of the WP321 module must be version 1.4.3 or higher to support the Siwarex DB.

Link to FW: <https://support.industry.siemens.com/cs/us/en/view/109747358>

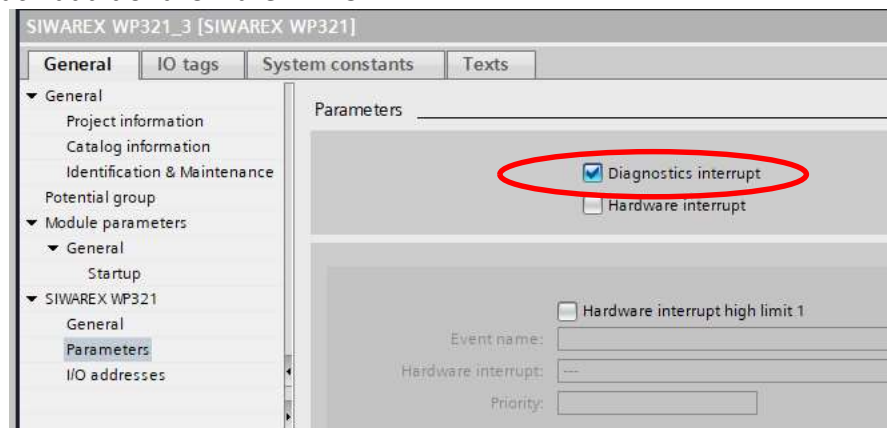
Classic CPU's S7-300, S7-400 and ET200S are not supported in the project

## Follow this procedure to handle the project:

1. Add the Siwarex WP321 in the HW configuration and note the numbers and names of the HW identifier.

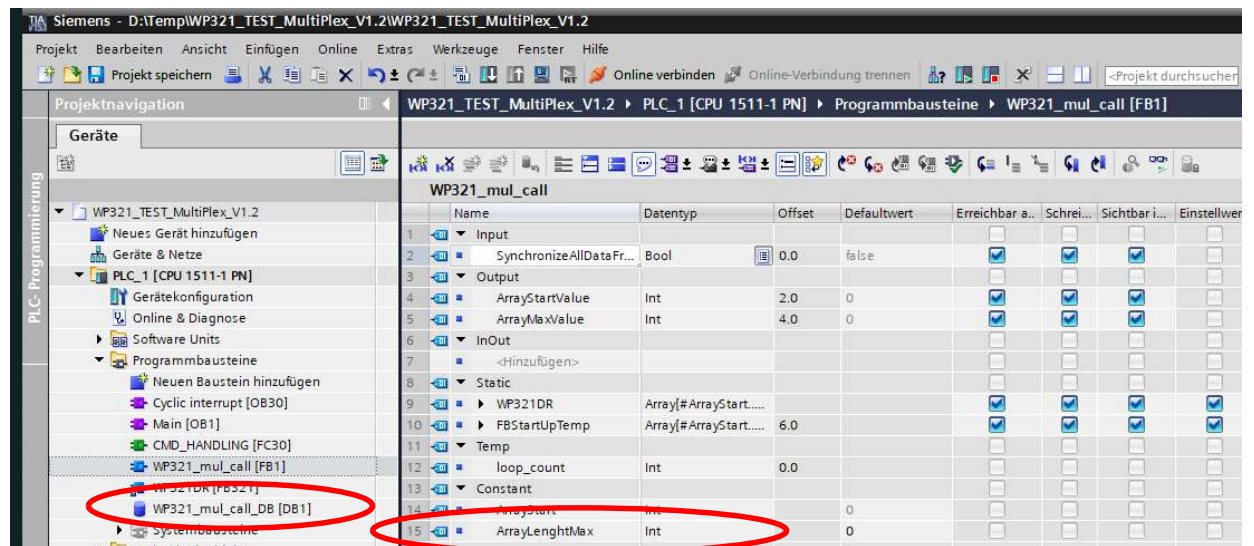


2. Set in the properties of the HW configuration the parameter “Diagnostic interrupt” for each additional Siwarex WP321.

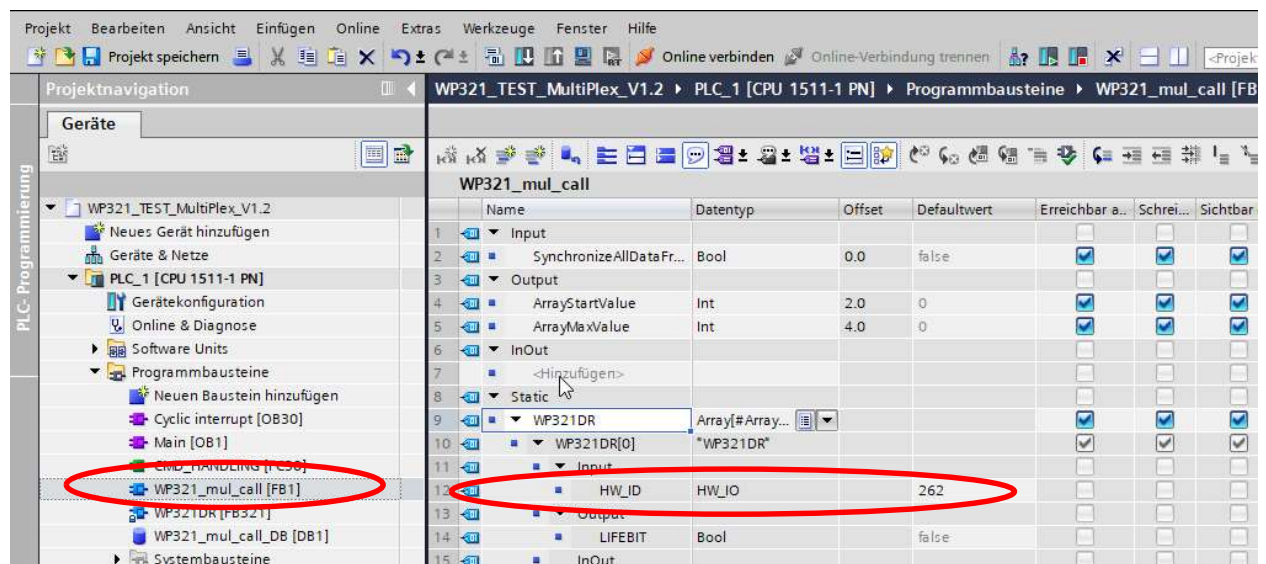


- Open the FB "WP321\_Multi\_call" and expand the array length of "ArrayLenghtMax"

Set the array length according the number of Siwarex WP321 in your HW configuration. Pay attention the value is calculated as a zero offset (if there is one WP351 the value is 0..0, if there is 5 WP351 the value is 0..4) - Recompile the FB "WP321\_mul\_call".



- Set the number from the HW identifier in the "HW\_ID" in the array of the WP321. Compile and make sure that the instance data block interface is updated – then download HW and SW to the PLC.

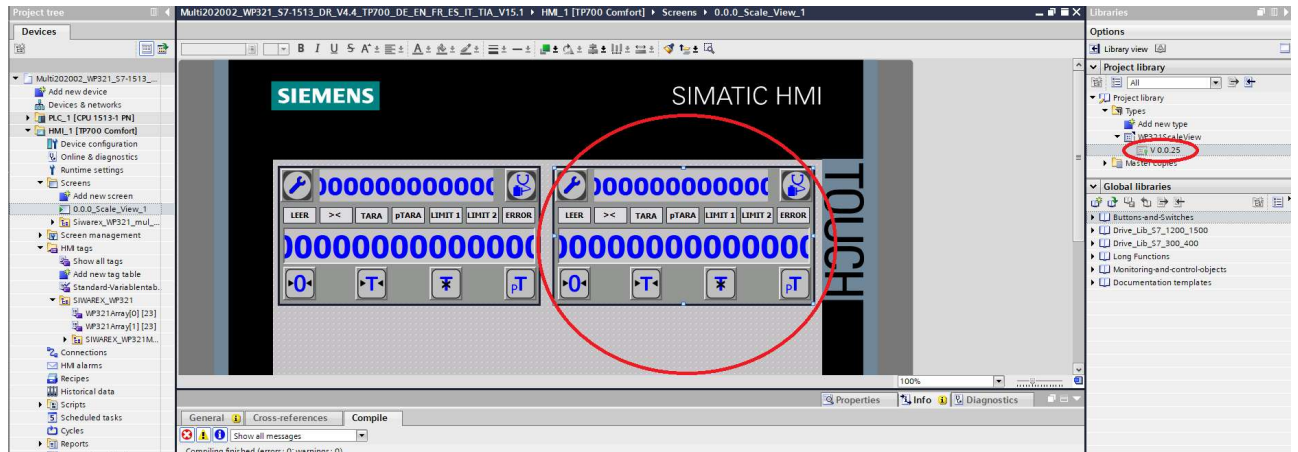


- Copy and paste the HMI tag table "WP321Array[0]". Rename the new tag table to "WP321Array[1]", "WP321Array[2]" etc. (in the brackets write the array number for each WP321 E.G. [Array number])

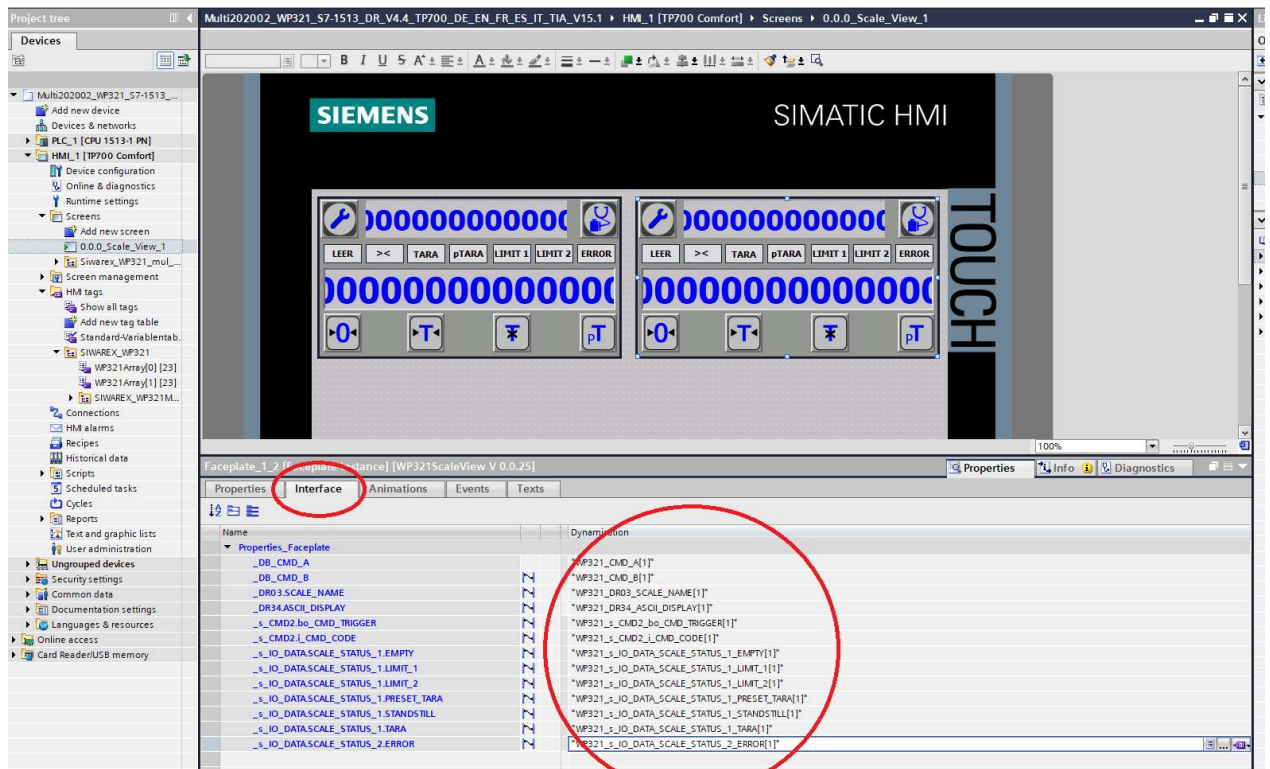




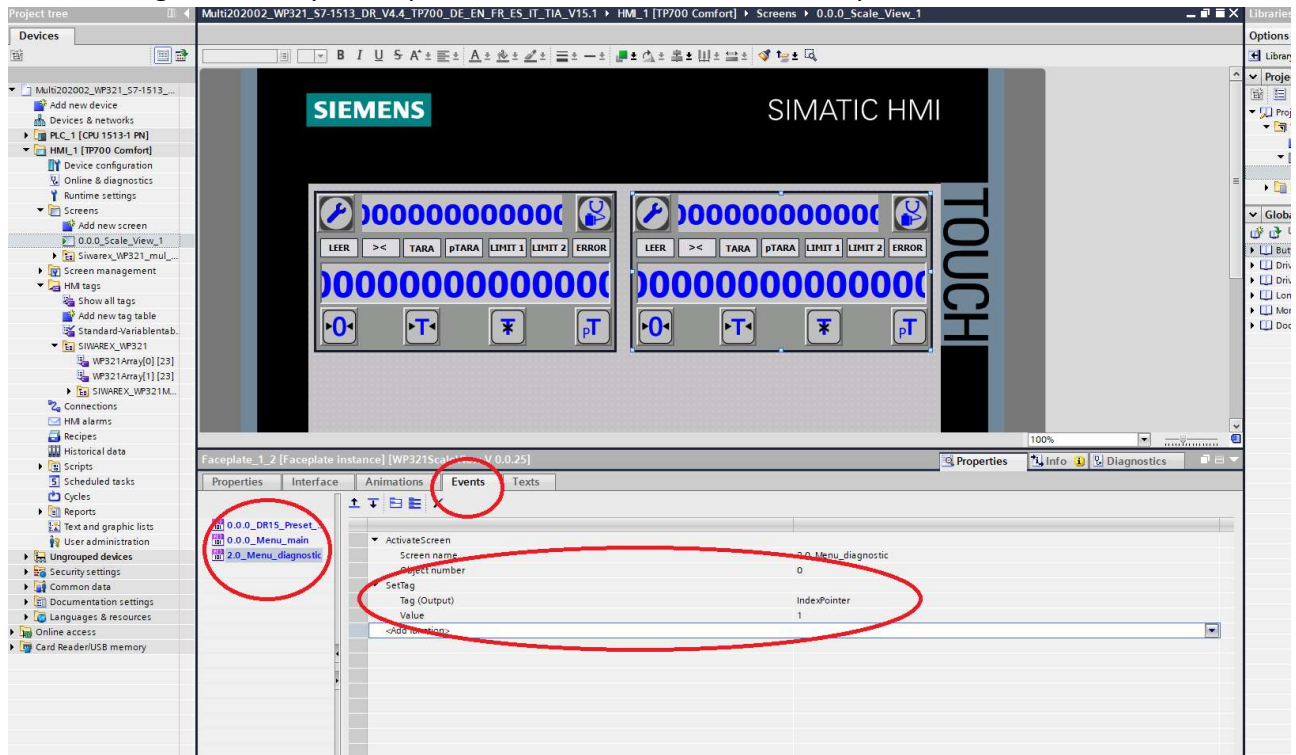
## 8. Copy and insert new Faceplates



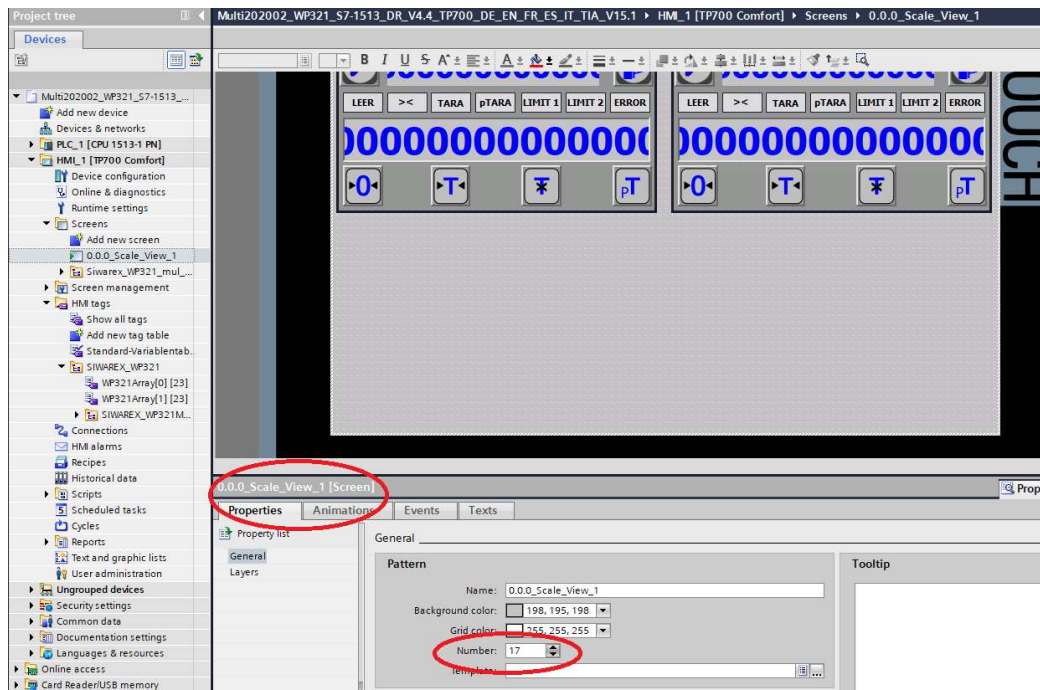
## 9. Link or re-wire tags in the instance of the faceplate to the new tags



# 10. Set or changes the array index pointer for all 3 events on the faceplate

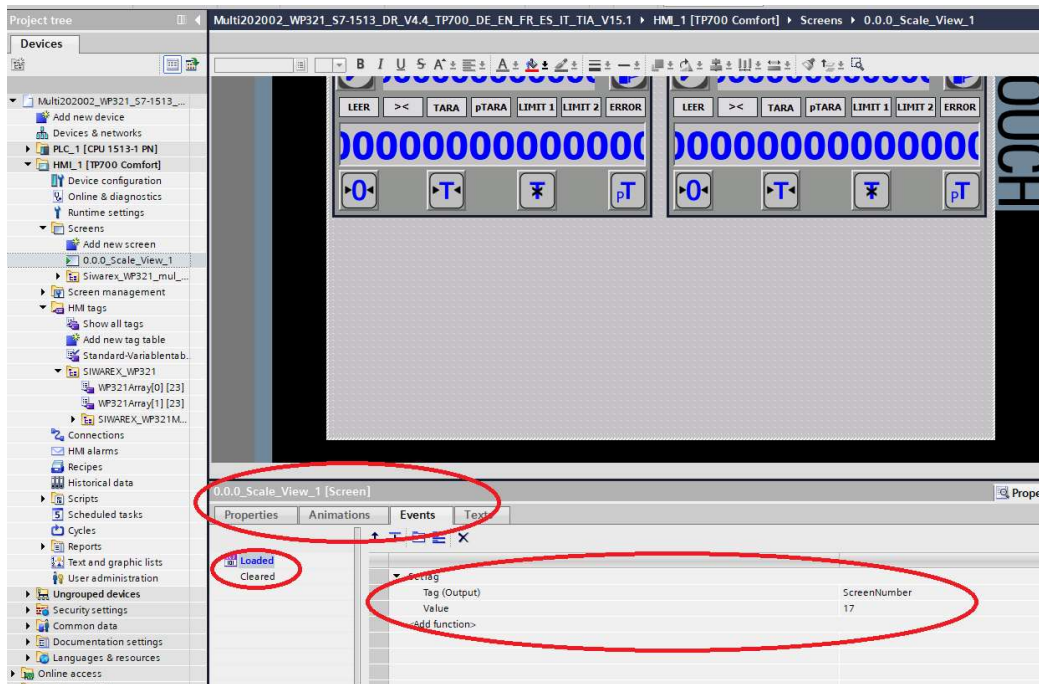


# 11. If it is needed add more screens for faceplates. Pay attention that when the screen is loaded the screen number is set (for screen navigation control) Remember to set the screen number when the screen is loaded



Find screen number of a screen





Set screen number on event "Loaded"

For a correct error reporting, don't forget to give a name to each scale during parameterization.

Download to the HMI



## Contact

If you have any issues or suggestions regarding the related products or documents, please feel free to contact:

Technical support for SIWAREX:

Siemens AG

Process Industries and Drives  
Process Automation  
Process Instrumentation  
Oestliche Rheinbrueckenstr. 50  
76187 Karlsruhe, Germany

Tel: +49 721 667 1200 (8am – 5pm German time)

E-Mail: [hotline.siwarex@siemens.com](mailto:hotline.siwarex@siemens.com)

Website: [www.siemens.com/weighing](http://www.siemens.com/weighing)

Support-Request: <http://www.siemens.de/automation/support-request>

### Copyright Statement

All rights reserved by Siemens AG

This document is subject to change without notice. Under no circumstances shall the content of this document be construed as an express or implied promise, guarantee (for any method, product or equipment) or implication by or from Siemens AG. Partial or full replication or translation of this document without written permission from Siemens AG is illegal.